

Office Division

# Office Building for Sale

2367 Lakeside Drive

Birmingham, AL 35244

## Building Information:

5,000 total square feet (upper and lower level)

Unincorporated Shelby County

Drive up parking

Monument Signage and professional landscape

Class "A" interior finishes

1,300 square feet available for occupancy. Ideal for owner user looking for investment property with long term credit income in place.

Lower level is fully leased (2,500sf) and a portion of the upper level is leased through February 2023.

Valleydale Road frontage

List Price: \$699,000.00

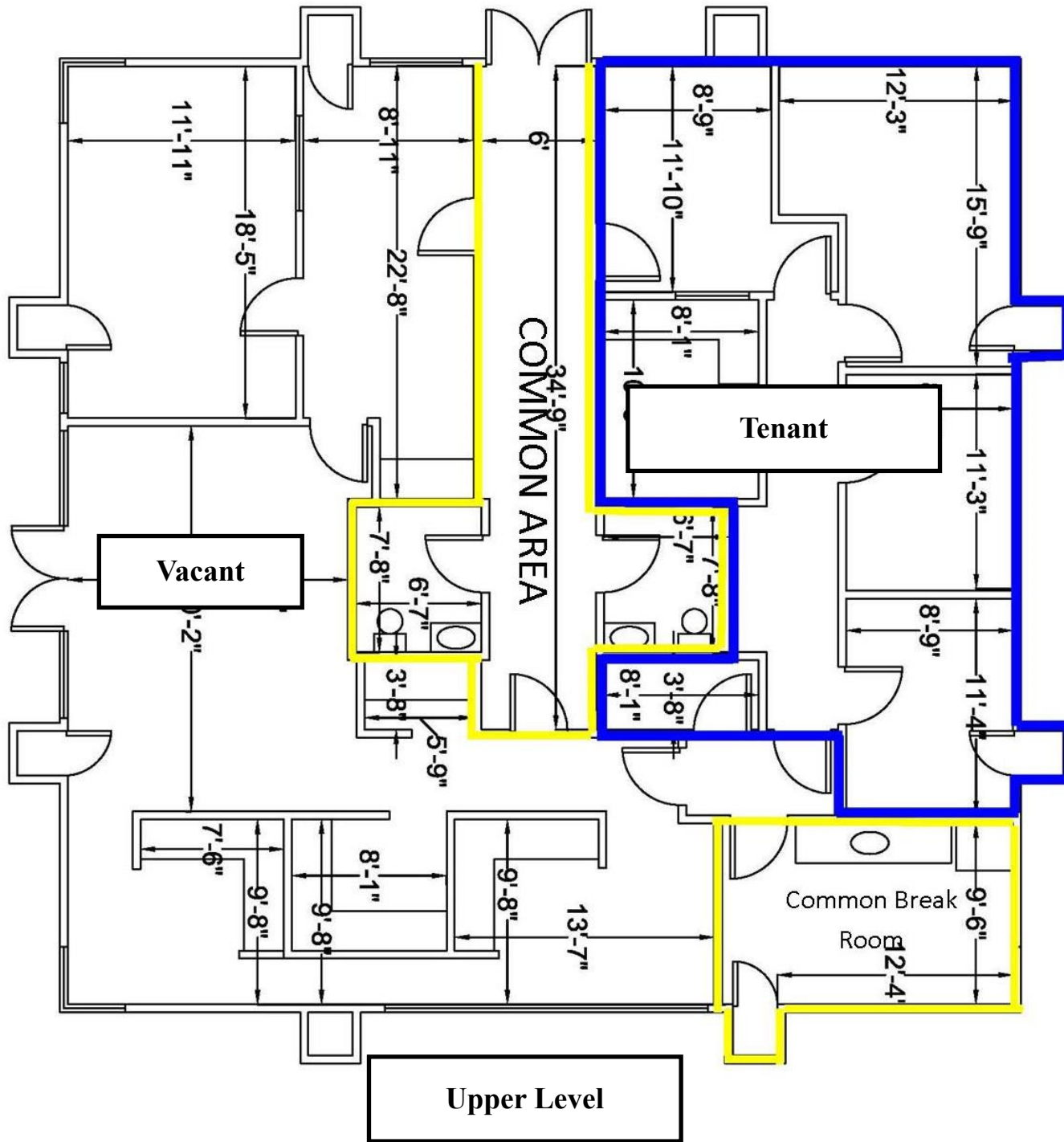
**Michael Johnson**  
(205) 939-8233 Direct  
mjohnson@engelrealty.com

www.engelrealty.com

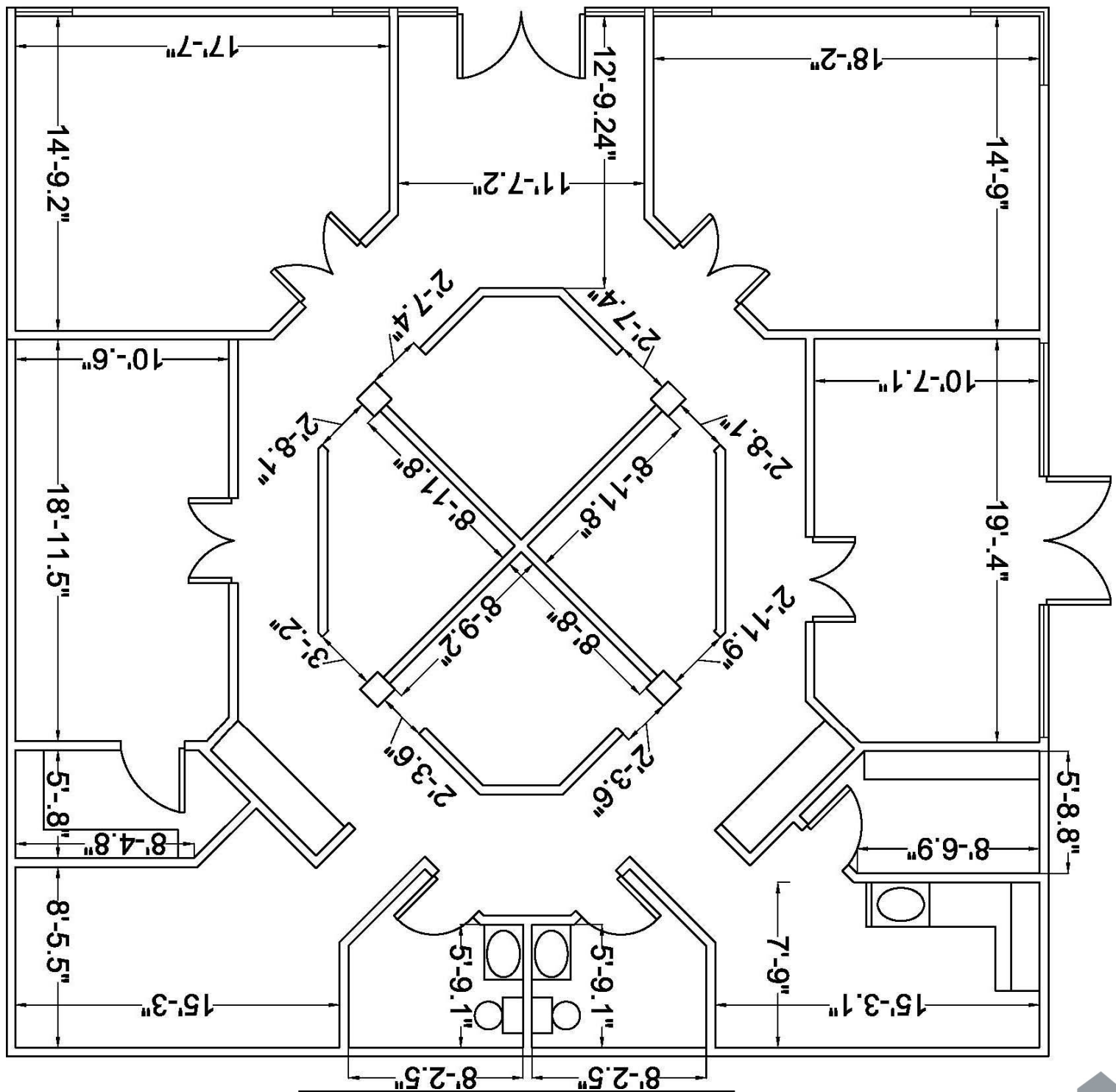






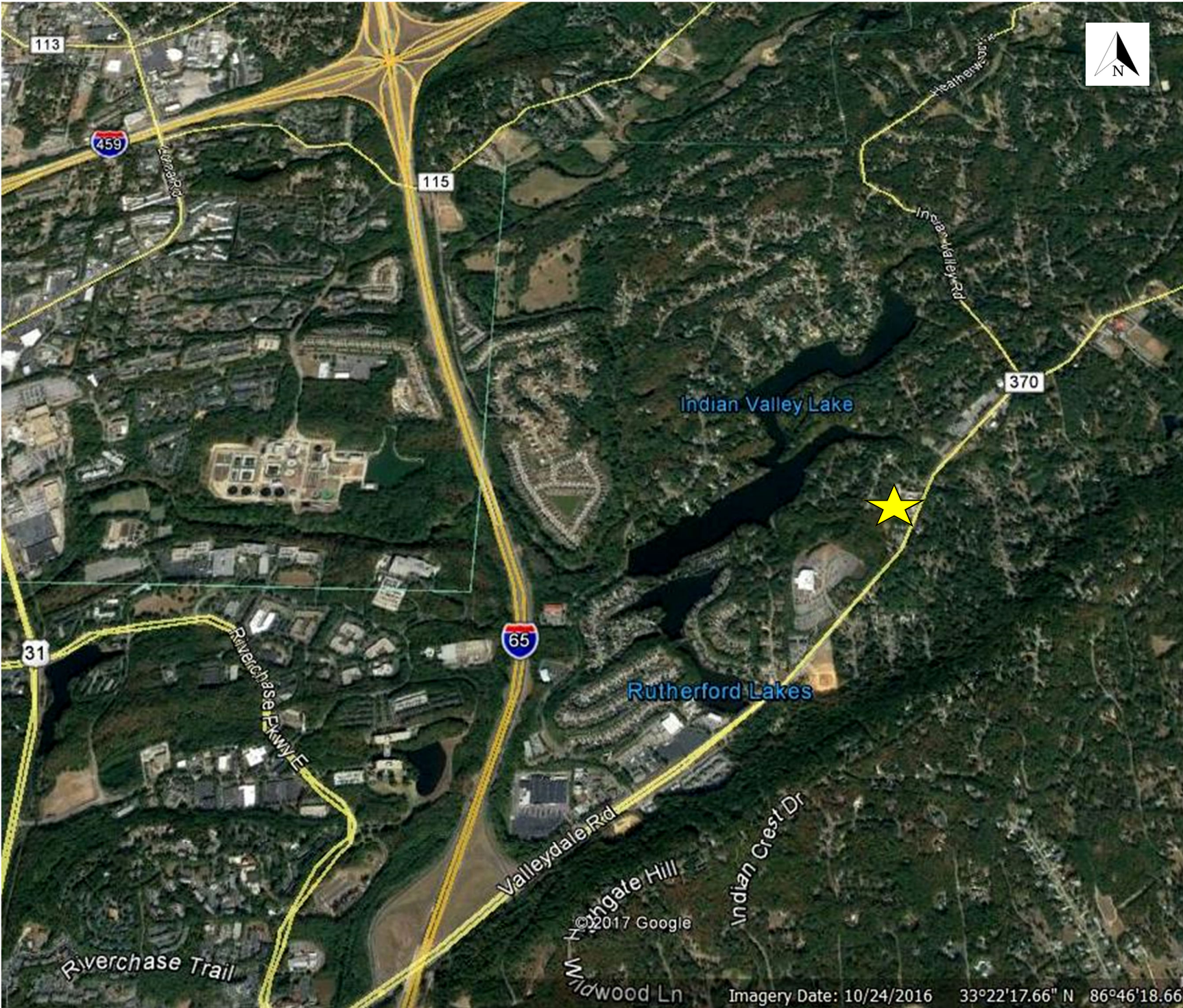






Lower Level





©2017 Google

Imagery Date: 10/24/2016 33°22'17.66" N 86°46'18.66"