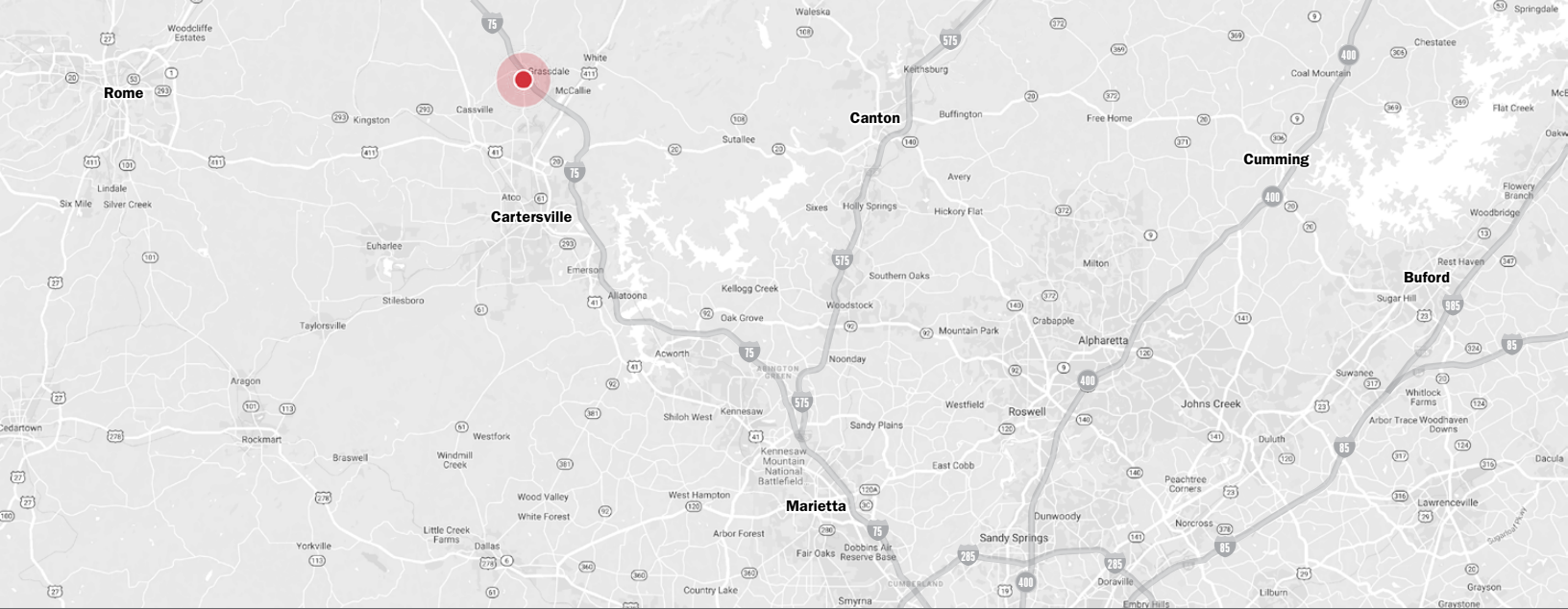


# B

## BARTOW COMMERCE CENTER II



41 Busch Drive NE, Cartersville, Georgia 30121 | Bartow County

*A development by*

# PANATTONI

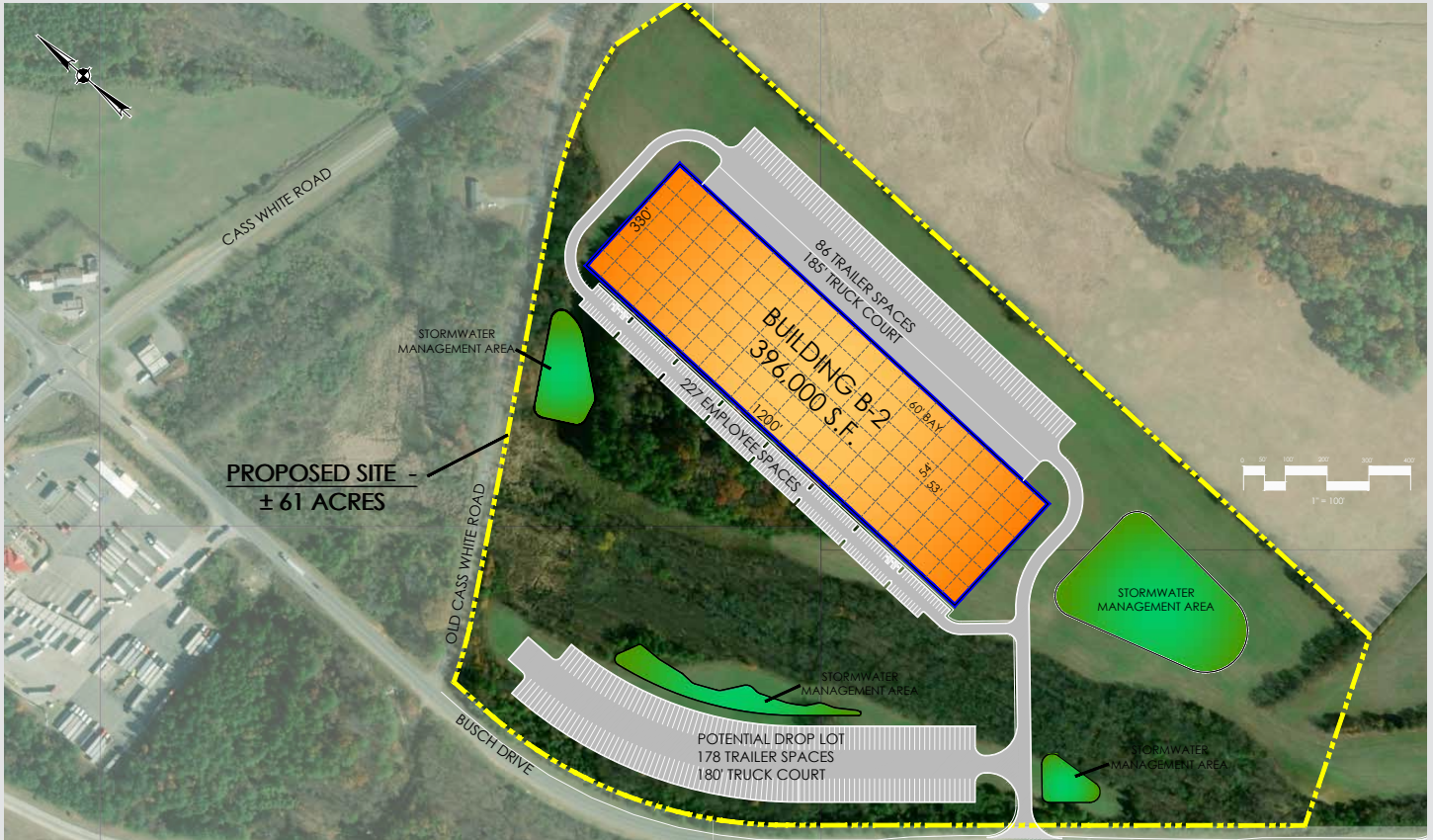
*Marketed by*

## NAI Brannen Goddard



# Bartow Commerce Center

**BUILDING TWO** | 41 Busch Drive NE, Cartersville, GA 30121



Building (SF)	±396,000
Site Size (AC)	±56.88
Clearance Height	36'
Truck Court Depths	185'
Building Depths	330'
Column Spacing	54' x 53' typical
Speed Bays	60' x 53'
Slab on Grade Thickness	7" unreinforced over 6" aggregate base
Roofing	45-mil single-ply TPO mechanically fastened with 15-year warranty
Fire Protection	ESFR
Dock Doors	69 (9' x 10')
Grade Level Doors	2
Auto Parking	227
Trailer Parking	264



# Bartow Commerce Center

41 & 51 Busch Drive NE, Cartersville, GA 30121



## COMPETITIVE ADVANTAGES

Centrally located in the heart of the southeast United States.

Bartow County is home to over 140 manufacturers.

Georgia's Quick Start is an internationally acclaimed workforce development program that provides customized workforce training to qualified new, expanding and existing businesses.

There are over 30 colleges in a 40-mile radius, including Chattahoochee Technical College, and Georgia Highlands College that each have campuses in Cartersville-Bartow County.

**Low Cost of Doing Business**

28% below national average

## NAI Brannen Goddard

**Mike Chambers** 404 812 4011 / mchambers@naibg.com

**Jack Haden** 404 812 4012 / jhaden@naibg.com

**Kane Chambers** 404 812 4084 / kchambers@naibg.com

*Information is deemed from reliable sources. No warranty is made as to its accuracy.*

A development by

PANATTONI