

FOR
LEASE



SILVER STAR COMMERCE CENTER #5

3756-3774 SILVER STAR RD | ORLANDO, FL | 4,800 to 13,950 SF AVAILABLE



CITE PARTNERS

PROPERTY SPECIFICATIONS

SUITE 3756

- 13,950 SF
- 960 SF of office
- 4 dock doors
- 1 ramp door
- Available October 1st
- \$6.25/SF NNN

SUITE 3764

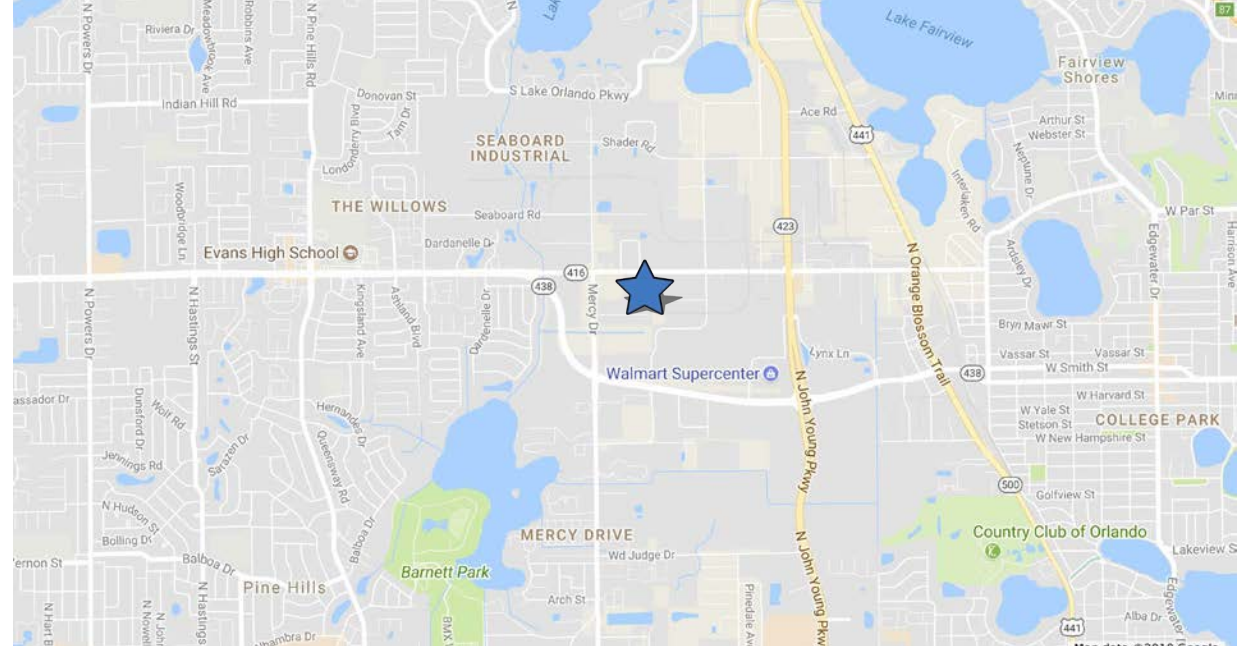
- 4,800 SF
- 1,435 SF of office
- 2 dock doors
- Available September 1st
- \$7.50/SF NNN

THE PROPERTY

- 31,950 SF total
- 18'± clear height
- Dock and ramp doors
- Rear load
- Block construction
- Built in 1974
- Zoned I-P/W, City of Orlando

LOCATION

- Excellent access to John Young Parkway, US Hwy 441, Lee Rd and Edgewater Dr
- Minutes from Interstate 4 and Colonial Dr



MATT SULLIVAN, SIOR, CCIM
Managing Director, Principal
matt.sullivan@citepartners.com
407.930.1802

WILSON MCDOWELL, SIOR, CCIM
Managing Director, Principal
wilson.mcdowell@citepartners.com
407.930.1801

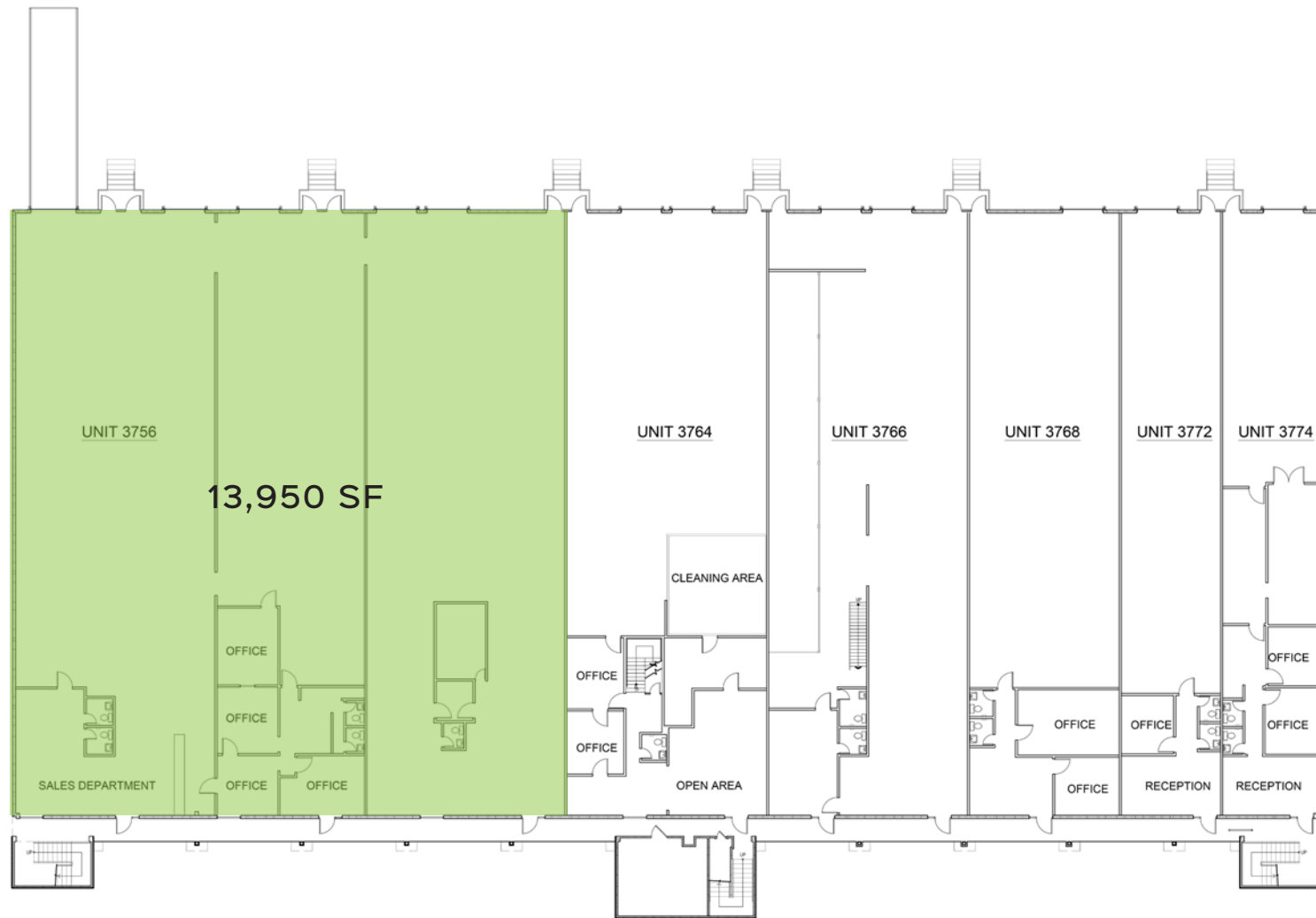
BOBBY ISOLA, SIOR, CCIM
Director, Principal
bobby.isola@citepartners.com
407.930.1804

CITE PARTNERS
100 East Pine Street, Suite 200
Orlando, FL 32801
www.citepartners.com

Disclaimer:

This document has been prepared by Cite Partners for advertising and general information only. Cite Partners makes no guarantees, representations or warranties of any kind, expressed or implied, regarding the information including, but not limited to, warranties of content, accuracy and reliability. Any interested party should undertake their own inquiries as to the accuracy of the information. Cite Partners excludes unequivocally all inferred or implied terms, conditions and warranties arising out of this document and excludes all liability for loss and damages arising therefrom. This publication is the copyrighted property of Cite Partners and/or its licensor(s). All rights reserved.

FLOOR PLAN | SUITE 3756



Silver Star Commerce Center #5

FLOOR PLAN | SUITE 3764

