

COLONIAL PARK MALL

4600 JONESTOWN ROAD, HARRISBURG, PA

±12,405 - 137,500 SF AVAILABLE FOR LEASE

JOIN

sears
SHOE
CARNIVAL



property highlights.

- Former BonTon and former CVS available for lease immediately.
- Located on the eastern shore of the Pennsylvania Capitol (Harrisburg) along the main commercial corridor.
- Redevelopment opportunity available
- Nearby retailers include Hobby Lobby, Target, PetSmart, Giant, Costco and more.
- 2 level building with multiple access points

stats.

2017 DEMOGRAPHICS*	3 MILES	5 MILES	7 MILES
EST. POPULATION	70,354	162,499	239,670
EST. HOUSEHOLDS	30,885	68,106	101,110
EST. AVG. HH INCOME	\$80,37	\$73,468	\$76,394

JONESTOWN ROAD (ROUTE 22) TRAFFIC COUNT: 41,000 VPD *ESRI 2017



METRO[®]
COMMERCIAL
REAL ESTATE, INC.

MetroCommercial.com | PHILADELPHIA, PA | PLYMOUTH MEETING, PA | MOUNT LAUREL, NJ | NAPLES, FL | MIAMI, FL

get in touch.

JOE DOUGHERTY

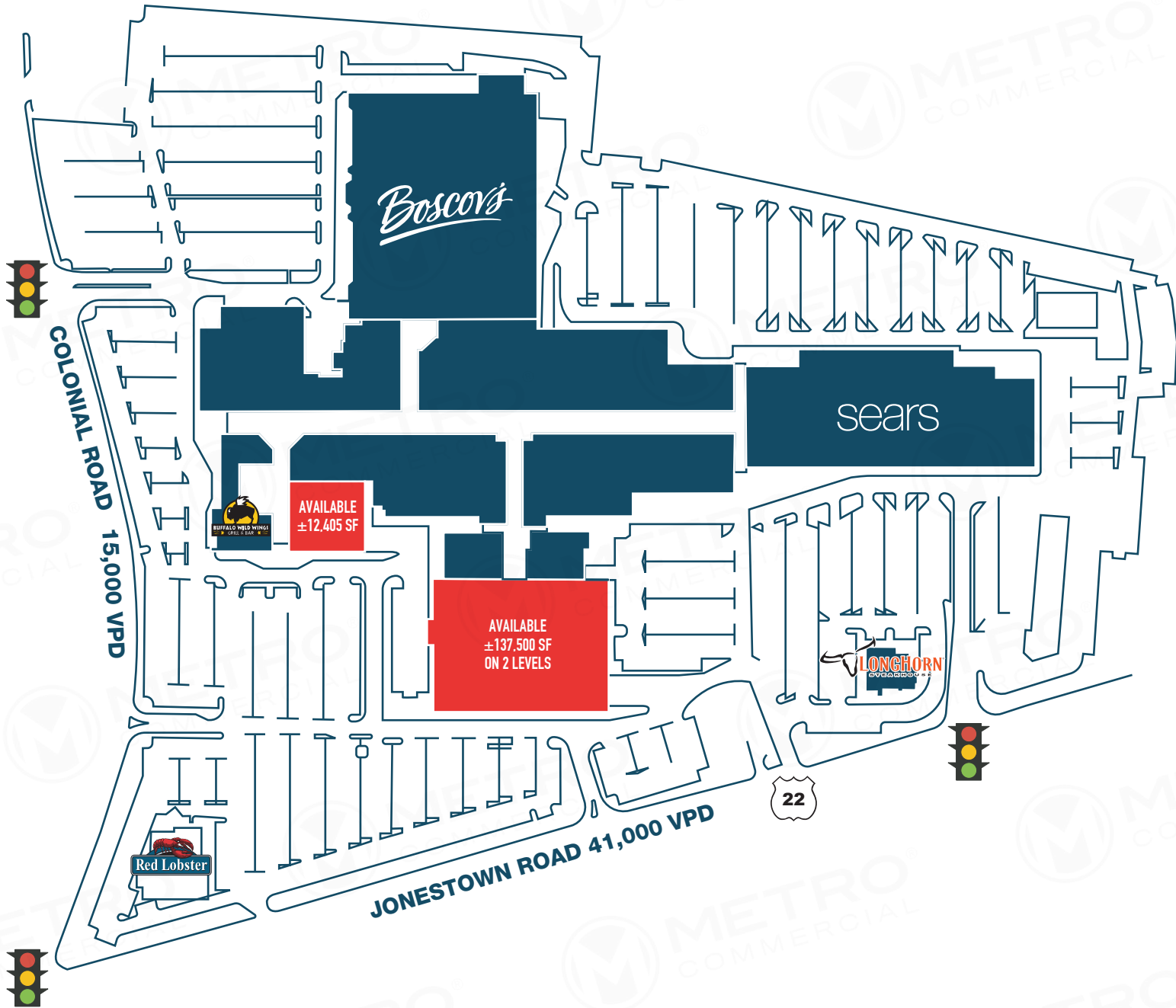
office 610.825.5222
direct 610.260.2670
jdougherty@metrocommercial.com

PAT GALLAGHER

office 610.825.5222
direct 610.260.2676
pgallagher@metrocommercial.com

MAX SILVER

office 610.825.5222
direct 610.260.2672
msilver@metrocommercial.com



**COLONIAL PARK MALL
HARRISBURG, PA**

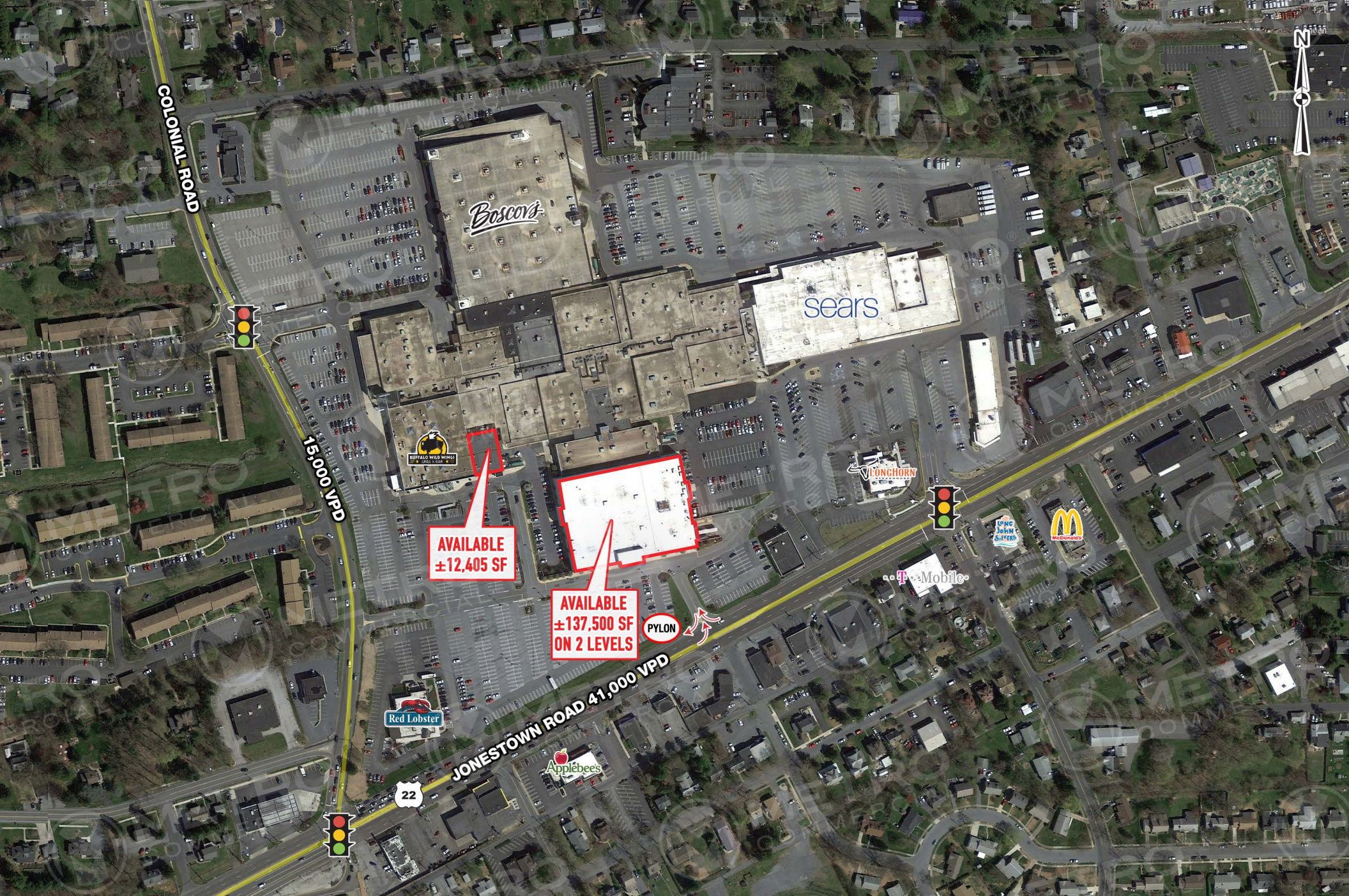
The information and images contained herein are from sources deemed reliable. However, Metro Commercial Real Estate, Inc. makes no representation whatsoever as to their accuracy or authenticity. Images shown may be modified for illustrative purposes. Images may be out-of-date and not current. 8.27.18



The information and images contained herein are from sources deemed reliable. However, Metro Commercial Real Estate, Inc. makes no representation whatsoever as to their accuracy or authenticity. Images shown may be modified for illustrative purposes. Images may be out-of-date and not current. 8.27.18

COLONIAL PARK MALL
HARRISBURG, PA

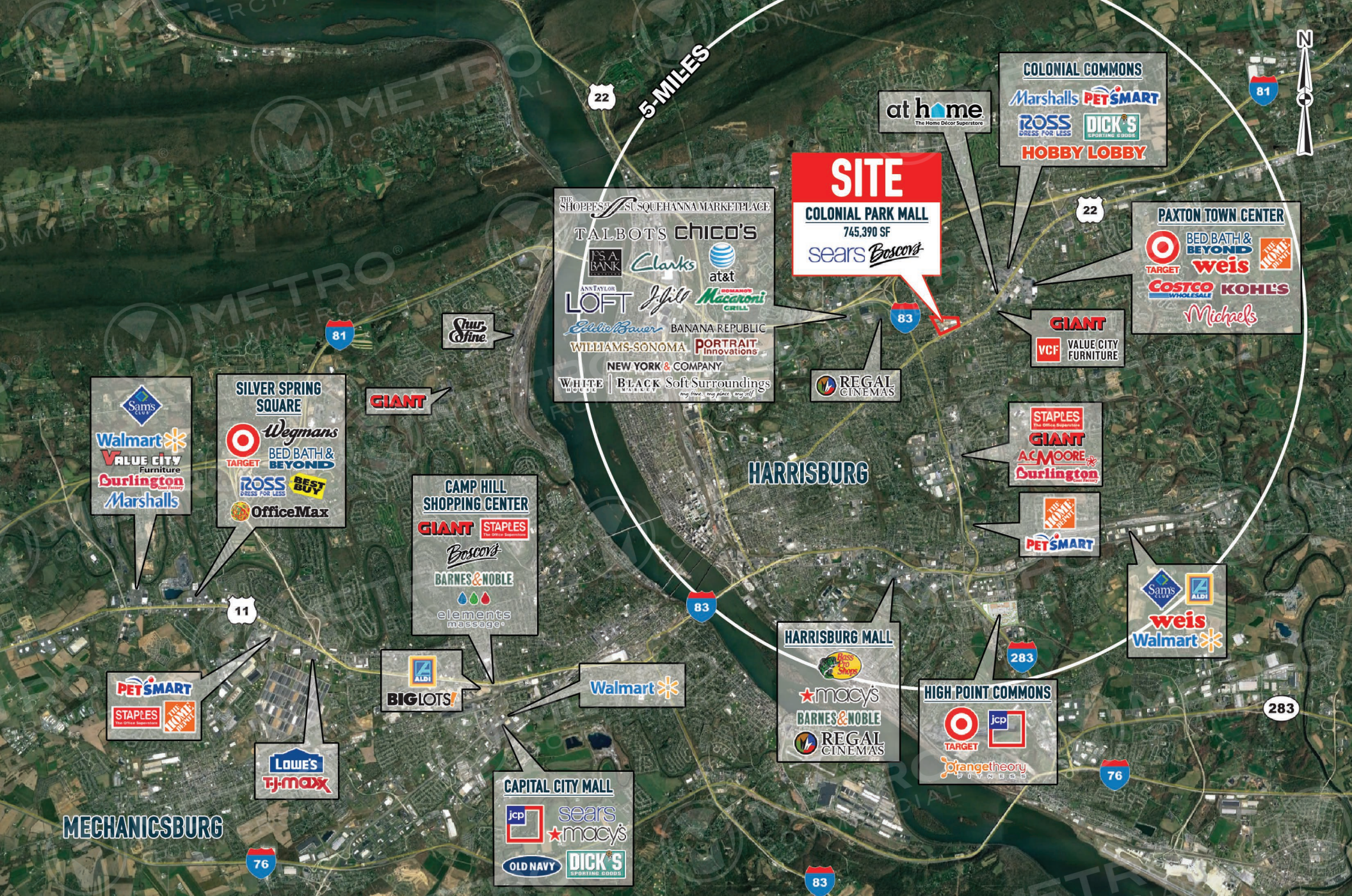




The information and images contained herein are from sources deemed reliable. However, Metro Commercial Real Estate, Inc. makes no representation whatsoever as to their accuracy or authenticity. Images shown may be modified for illustrative purposes. Images may be out-of-date and not current. 8.27.18

COLONIAL PARK MALL HARRISBURG, PA





The information and images contained herein are from sources deemed reliable. However, Metro Commercial Real Estate, Inc. makes no representation whatsoever as to their accuracy or authenticity. Images shown may be modified for illustrative purposes. Images may be out-of-date and not current. 8.27.18

COLONIAL PARK MALL HARRISBURG, PA