



## Super 8 by Wyndham

1223 Omaha Avenue, Norfolk, NE 68701

### Property Features

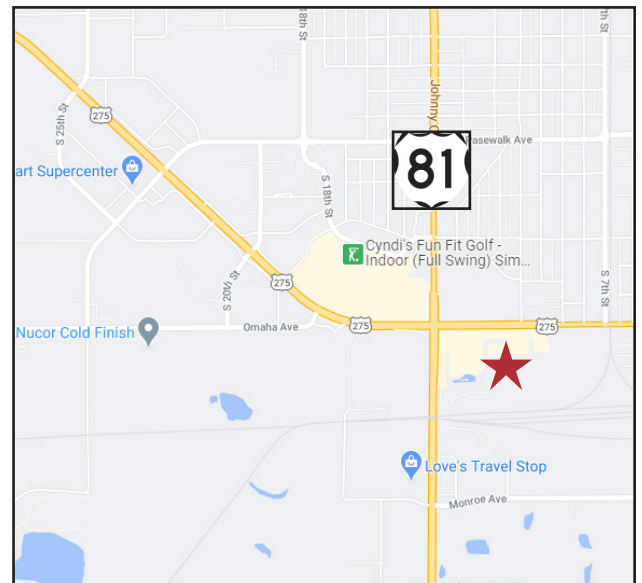
- 66 room hotel - including 2 rooms converted to apartments
- Building size: 22,948 sq. ft.
- Lot size: 2.06 acres (561' x 160')
- 65.73% annual occupancy
- ADR \$59.33
- Year built: 1977
- 66 surface parking spots
- **All showings must be set up by broker**

### Pricing

- List price: \$2,350,000 (\$35,606.06/ key)
- Price includes FF&E
- 2019 Real Estate Taxes: \$20,009
- 2019 revenue: \$863,588
- Wyndham contract expires 2034
- 12% Cap Rate
- Financials available upon request

### Location

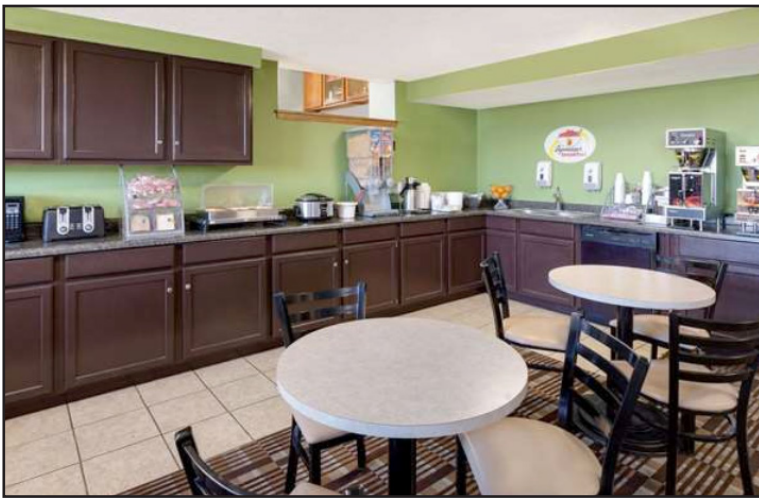
- Located just off Highway 81 in Norfolk, NE - hometown of Johnny Carson
- Population: 23,000
- Area neighbors include: Perkins, Bomgaars, Country Inn & Suites



**Dale Zomer**  
Senior Vice President

+1 605 444 7117 direct  
+1 605 351 1218 mobile  
dzomer@naisiouxfalls.com

For Sale  
Hotel



For Sale  
Hotel

