



**THALHIMER**

RETAIL AVAILABLE FOR LEASE  
6216 College Drive  
Suffolk, VA

1,400 SF AVAILABLE



For more information, contact:

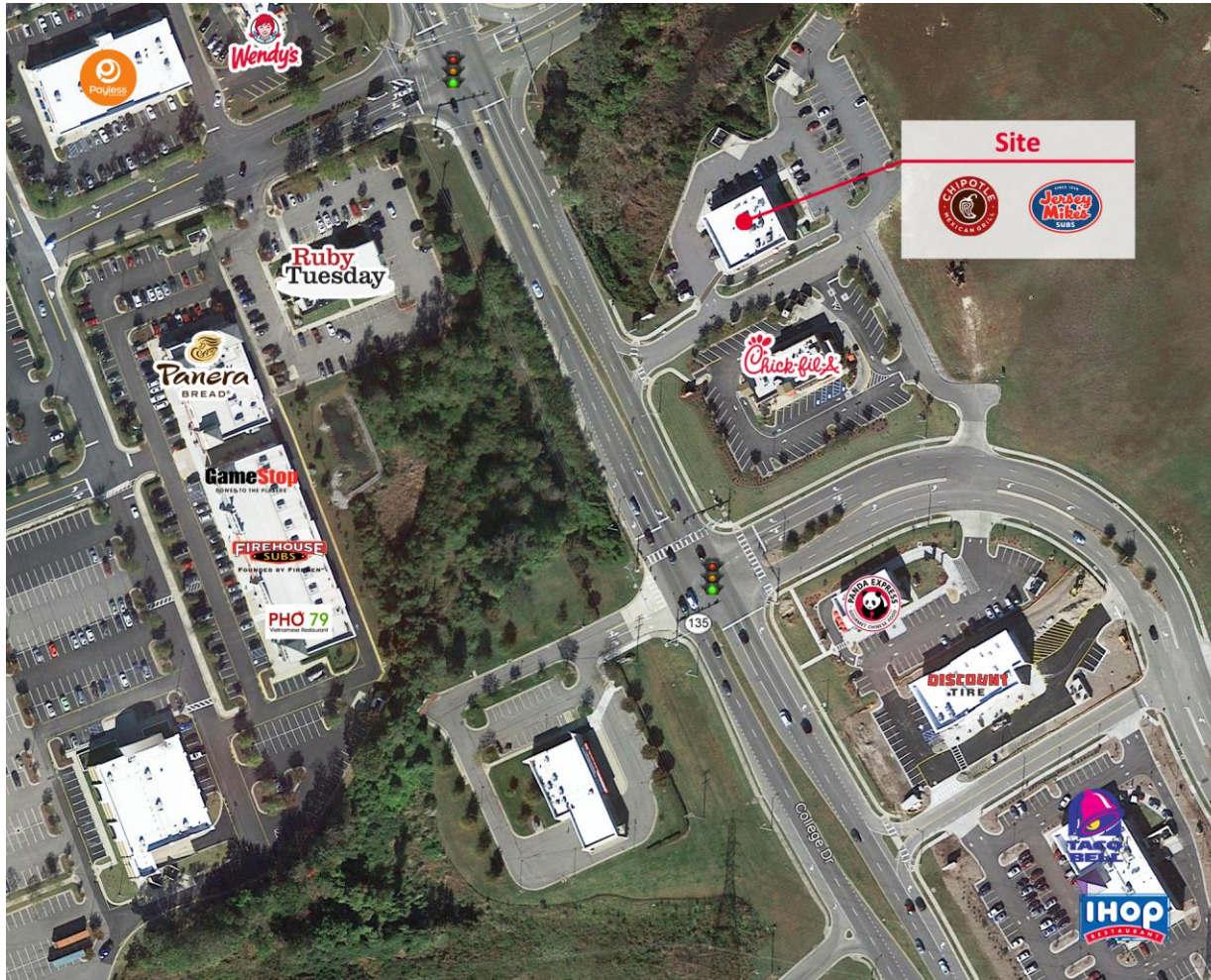
**DEAN MARTIN**  
Senior Associate  
757 213 4158  
[dean.martin@thalhimer.com](mailto:dean.martin@thalhimer.com)

The Town Center of Virginia Beach  
222 Central Park Ave., Suite 1820  
Virginia Beach, VA 23462  
[www.thalhimer.com](http://www.thalhimer.com)

Independently Owned and Operated / A Member of the Cushman & Wakefield Alliance

Cushman & Wakefield | Thalhimer © 2015. No warranty or representation, express or implied, is made to the accuracy or completeness of the information contained herein, and same is submitted subject to errors, omissions, change of price, rental or other conditions, withdrawal without notice, and to any special listing conditions imposed by the property owner(s). As applicable, we make no representation as to the condition of the property (or properties) in question.





### Property Features

- 1,400 SF available
- Direct access to College Drive
- 22,000 VPD on College Drive
- Monument signage available
- Located in the heart of the Harbour View submarket
- Great visibility
- Available immediately

### Join



### Demographics

	1 Mile	3 Miles	5 Miles
Population	7,824	48,803	80,782
No. of Households	2,494	18,089	30,722
Avg. HH Income	\$112,469	\$101,565	\$104,048

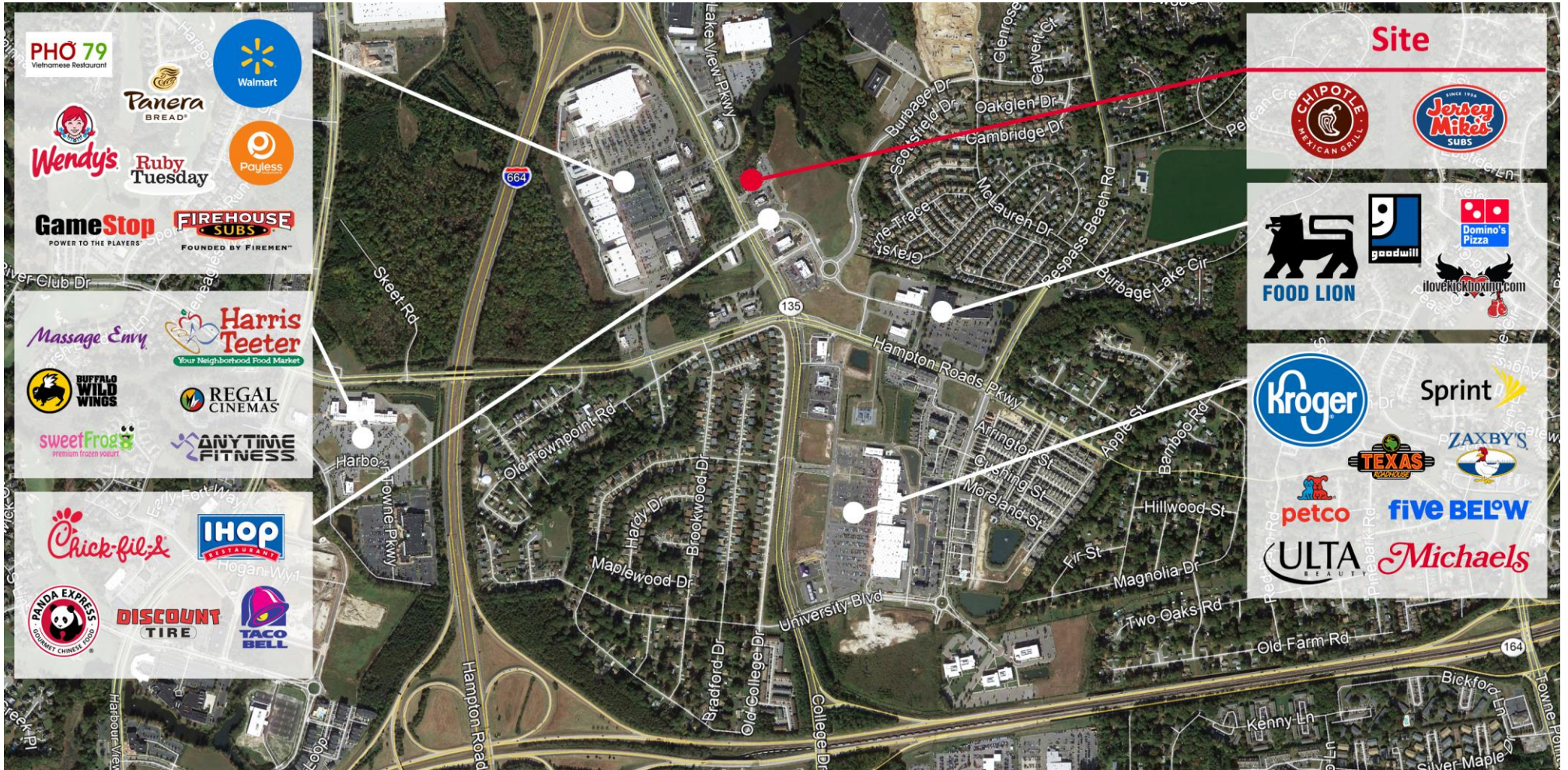
For more information, contact:

**DEAN MARTIN**  
Senior Associate  
757 213 4158  
dean.martin@thalhimer.com

The Town Center of Virginia Beach  
222 Central Park Ave., Suite 1820  
Virginia Beach, VA 23462  
www.thalhimer.com



**RETAIL AVAILABLE FOR LEASE**  
**6216 College Drive**  
 Suffolk, VA



For more information, contact:

**DEAN MARTIN**  
 Senior Associate  
 757 213 4158  
[dean.martin@thalhimer.com](mailto:dean.martin@thalhimer.com)

The Town Center of Virginia Beach  
 222 Central Park Ave., Suite 1820  
 Virginia Beach, VA 23462  
[www.thalhimer.com](http://www.thalhimer.com)