

6377 S Revere Pky, Centennial, CO 80111

W. Ryan Stout
303.813.6448
ryan.stout@cushwake.com

Zachary T. Williams
303.813.6474
zach.williams@cushwake.com

Nathan J. Bradley
303.813.6444
nate.bradley@cushwake.com

Kiley Crews
303.312.4219
kiley.crews@cushwake.com





6377 S Revere Pky, Centennial, CO 80111

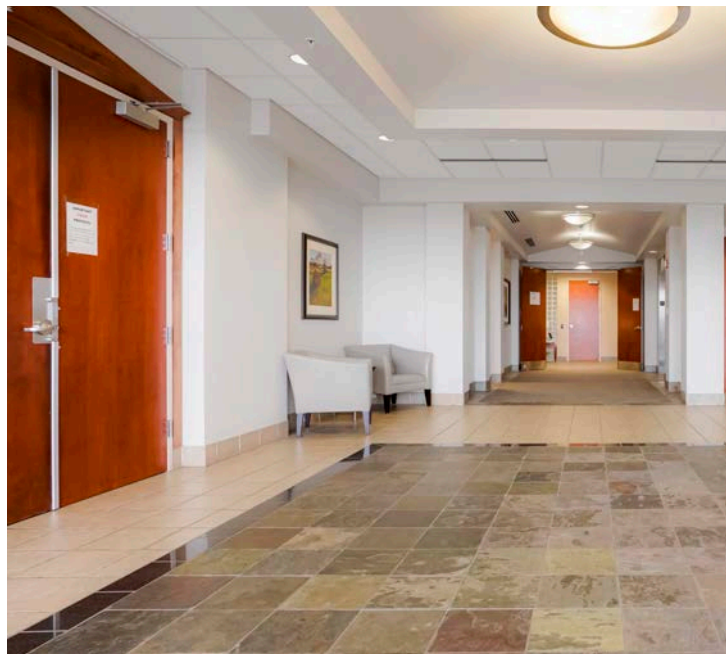


BUILDING DETAILS:

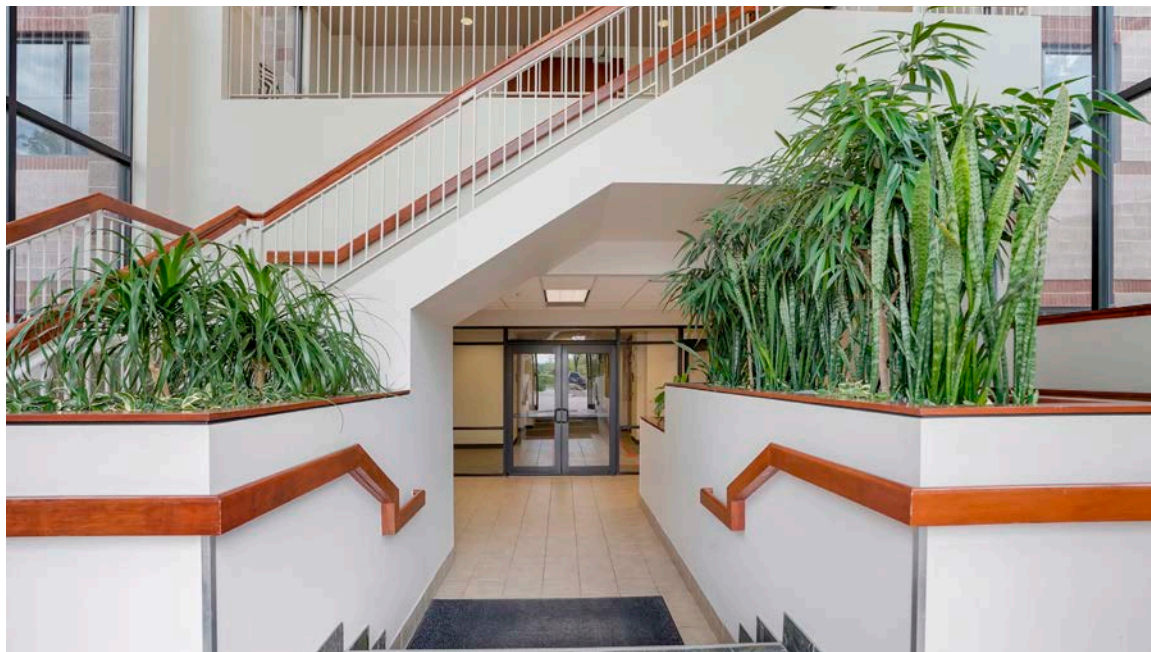
RBA:	63,364 SF
Year Built:	2000
Building Class:	B
Stories:	4
Typical Floor:	15,000 SF
Parking:	4.10 : 1,000 SF

BUILDING FEATURES:

- ▶ Courtyard
- ▶ Monument Signage
- ▶ Showers & Lockers
- ▶ 24 Hour Access/Key Card Security
- ▶ Outstanding Western & Cherry Creek Reservoir Views



6377 S Revere Pky, Centennial, CO 80111





Cushman & Wakefield Copyright 2022. No warranty or representation, express or implied, is made to the accuracy or completeness of the information contained herein, and same is submitted subject to errors, omissions, change of price, rental or other conditions, withdrawal without notice, and to any special listing conditions imposed by the property owner(s). As applicable, we make no representation as to the condition of the property (or properties) in question.

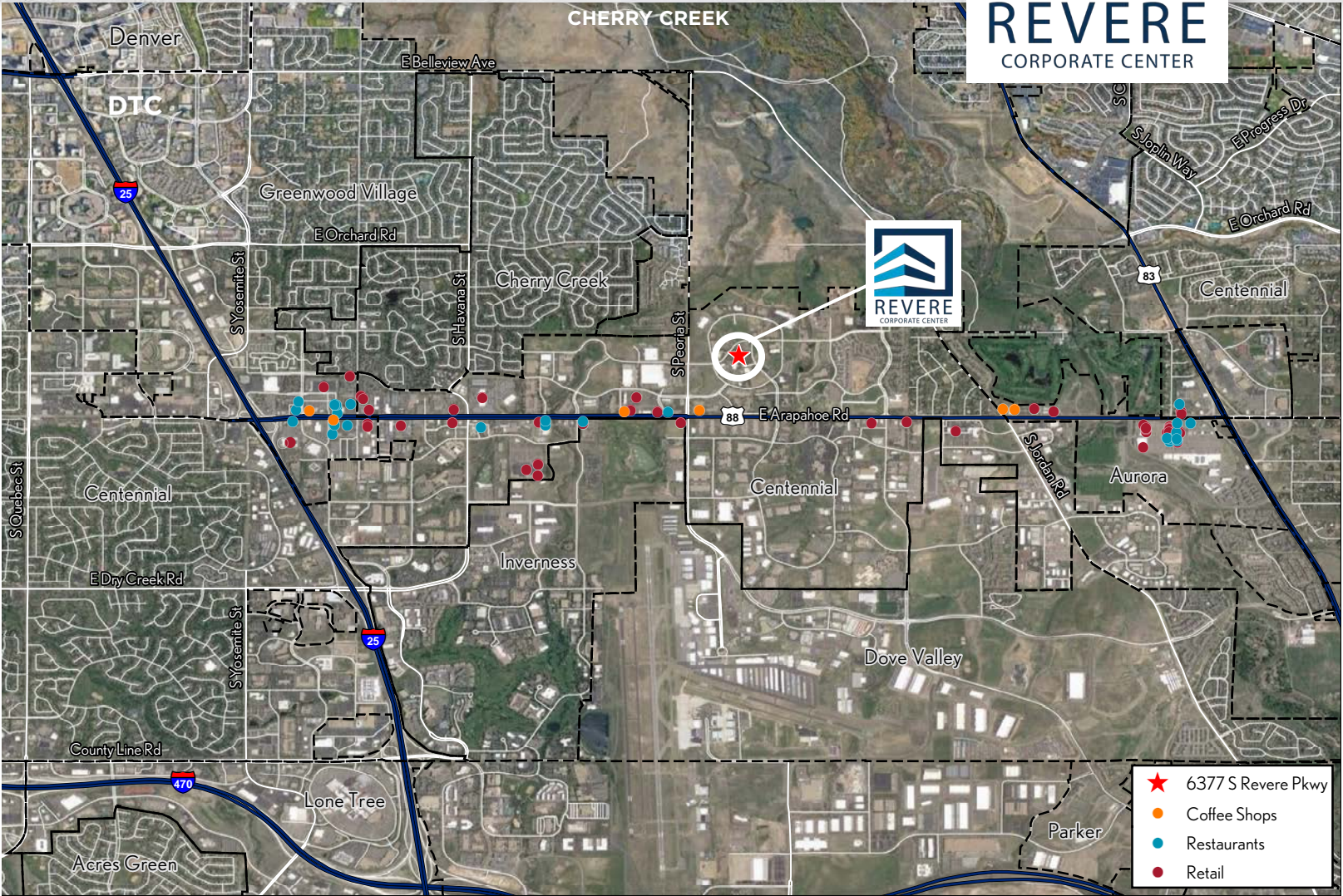


BUILDING LOCATION:

- ▶ Incredible Denver location with multiple restaurants & retailers within half a mile
- ▶ Easy access to Interstate 25, Arapahoe Road

WALKABLE RETAILERS:





NUMEROUS WALKABLE AMENITIES!

6377 S Revere Pky, Centennial, CO 80111

W. Ryan Stout
303.813.6448
ryan.stout@cushwake.com

Zachary T. Williams
303.813.6474
zach.williams@cushwake.com

Nathan J. Bradley
303.813.6444
nate.bradley@cushwake.com

Kiley Crews
303.312.4219
kiley.crews@cushwake.com

