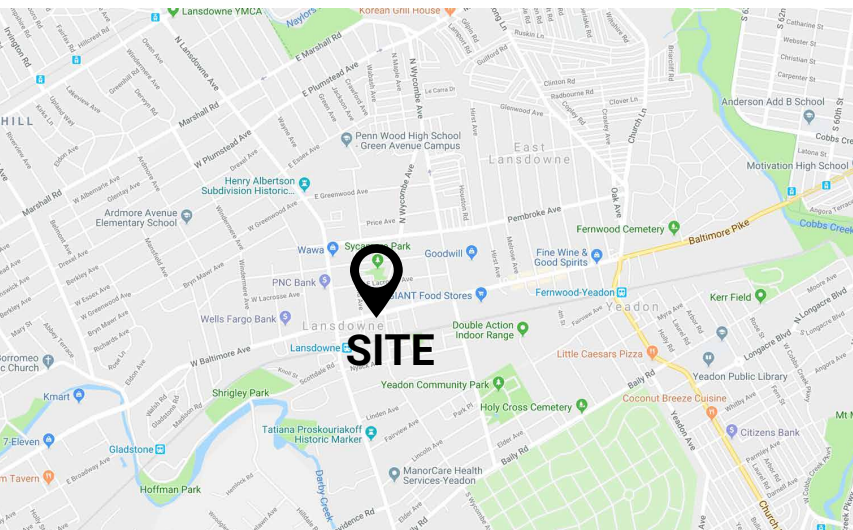


**± 7,000 SF STOREFRONT / RETAIL**  
48 - 50 E Baltimore Ave. | Lansdowne, PA 19050

**FOR LEASE:**  
**\$18 PSF NNN**

## PROPERTY FEATURES

- ✓ ± 7,000 SF Storefront / Retail Available For Lease
- ✓ Strong Traffic Counts: ± 16,492 VPD
- ✓ Located in "Opportunity Zone"
- ✓ New Roof Structure in 2015
- ✓ Perfect Space For a Restaurant, Catering, Beer Garden, Brewery or Distillery
- ✓ Elevated Ceiling, Beautiful Exposed Brick and Steel Beams throughout
- ✓ Drive-In Door



**ZOMMICK MCMAHON**  
COMMERCIAL REAL ESTATE

## CONTACT US

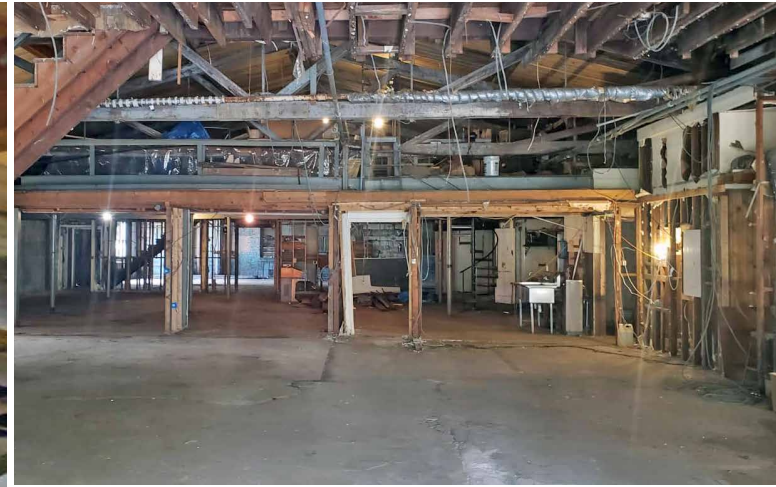
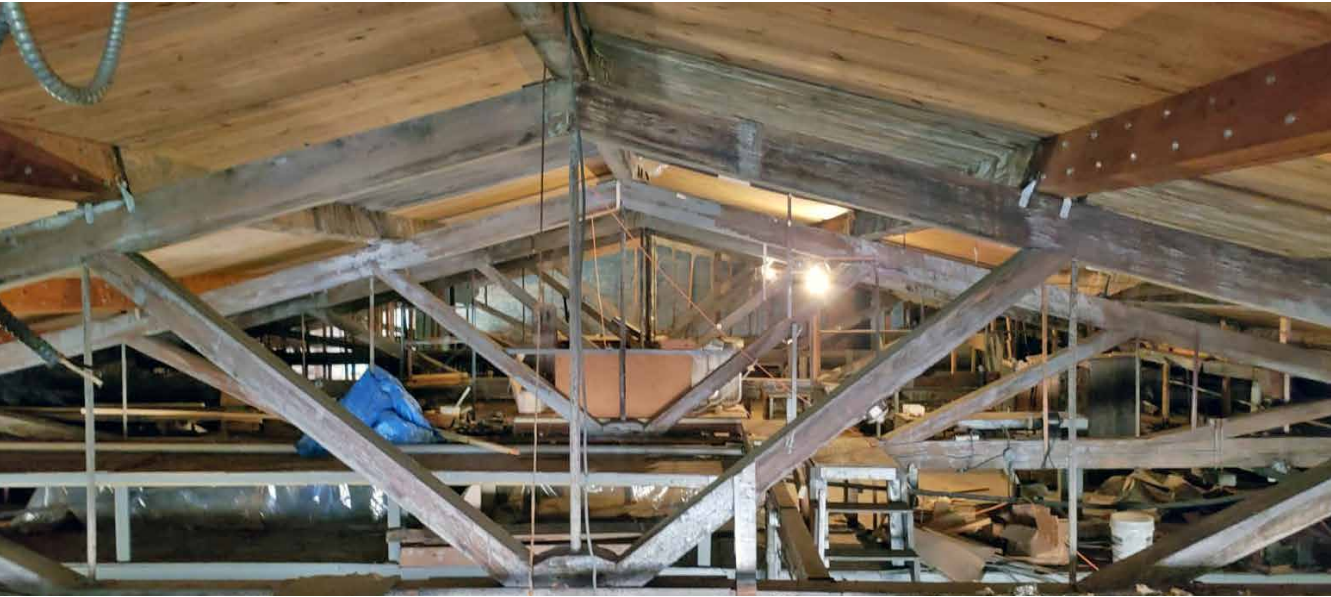
**JAMES PINCKNEY**  
Phone: 610.359.1100  
Cell: 610.453.2569  
Email: [jpinckney@zmcre.com](mailto:jpinckney@zmcre.com)

**TESS SCOTT**  
Phone: 610.359.1100  
Cell: 610.401.3453  
Email: [tscott@zmcre.com](mailto:tscott@zmcre.com)

1306 Wilmington Pike, Suite A-2  
West Chester, PA 19382  
610.359.1100  
[www.zmcre.com](http://www.zmcre.com)



# LANSDOWNE PROPERTY PHOTOS: 48 - 50 E BALTIMORE AVE



  
**ZOMMICK MCMAHON**  
COMMERCIAL REAL ESTATE

## CONTACT US

**JAMES PINCKNEY**

Phone: 610.359.1100

Cell: 610.453.2569

Email: [jpinckney@zmcre.com](mailto:jpinckney@zmcre.com)

**TESS SCOTT**

Phone: 610.359.1100

Cell: 610.401.3453

Email: [tscott@zmcre.com](mailto:tscott@zmcre.com)

1306 Wilmington Pike, Suite A-2

West Chester, PA 19382

610.359.1100

[www.zmcre.com](http://www.zmcre.com)



# LANSDOWNE SITE LOCATION AERIAL: 48 - 50 E BALTIMORE AVE



  
**ZOMMICK MCMAHON**  
COMMERCIAL REAL ESTATE

## CONTACT US

**JAMES PINCKNEY**  
Phone: 610.359.1100  
Cell: 610.453.2569  
Email: [jpinckney@zmcre.com](mailto:jpinckney@zmcre.com)

**TESS SCOTT**  
Phone: 610.359.1100  
Cell: 610.401.3453  
Email: [tscott@zmcre.com](mailto:tscott@zmcre.com)

1306 Wilmington Pike, Suite A-2  
West Chester, PA 19382  
610.359.1100  
[www.zmcre.com](http://www.zmcre.com)



# ABOUT ZOMMICK McMAHON COMMERCIAL REAL ESTATE

Zommick McMahon Commercial Real Estate, Inc. has been a Metro Philadelphia Area staple since its inception in 1949. The Company was founded by Joseph Zommick, and continues today with Ryan McMahon and his highly experienced staff, whom are all results-oriented professionals.

## SOME OF OUR SATISFIED CLIENTS:

**ROYAL  
FARMS**



*Walgreens*

**WSFS** bank  
We Stand For Service

Regency  
Centers.



*Wawa*

Bank of America®



**IRON HILL**  
BREWERY & RESTAURANT

**DUNKIN'  
DONUTS**



**Express**  
EMPLOYMENT PROFESSIONALS

  
**ZOMMICK McMAHON**  
COMMERCIAL REAL ESTATE

## CONTACT US

**JAMES PINCKNEY**

Phone: 610.359.1100

Cell: 610.453.2569

Email: [jpinckney@zmcre.com](mailto:jpinckney@zmcre.com)

**TESS SCOTT**

Phone: 610.359.1100

Cell: 610.401.3453

Email: [tscott@zmcre.com](mailto:tscott@zmcre.com)

1306 Wilmington Pike, Suite A-2

West Chester, PA 19382

610.359.1100

[www.zmcre.com](http://www.zmcre.com)