

FOR SALE

1010 E. Butler Road, Greenville, SC 29607

NAI Earle Furman



±0.8 Acre Outparcel | Regent Park

- Great location in thriving business community
- Signalized intersection
- All utilities available
- Zoned S-1, City of Mauldin
- Located directly across from Brookfield North Business Park
- Less than one mile from I-385 (Exit 34)

SALE PRICE \$15.00/SF



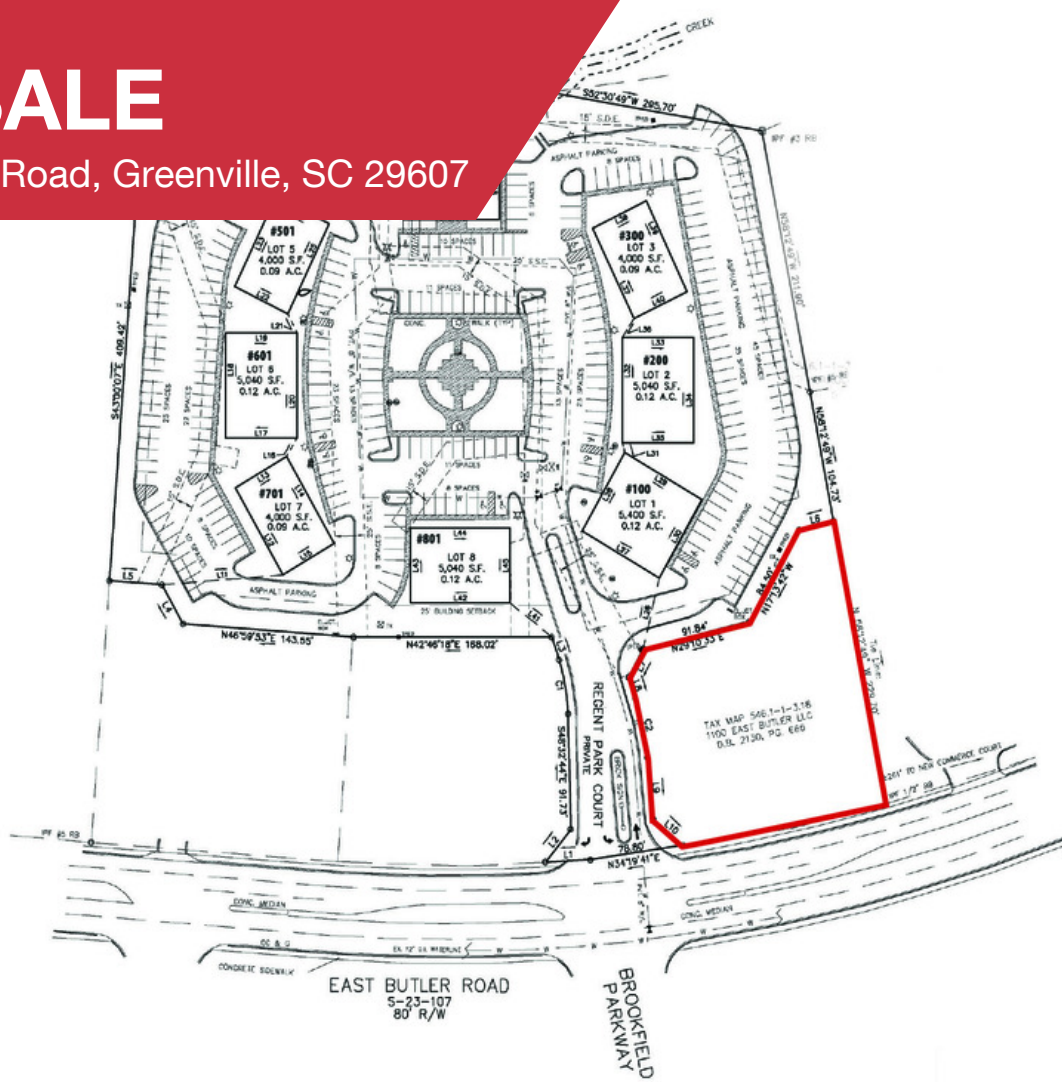
✉ **Joseph "Earle" Furman, Jr., SIOR**
O: +1 864 232 9040
C: +1 864 230 9102
efurman@naiearlefurman.com

No Warranty Or Representation, Express Or Implied, Is Made As To The Accuracy Of The Information Contained Herein, And The Same Is Submitted Subject To Errors, Omissions, Change Of Price, Rental Or Other Conditions, Prior Sale, Lease Or Financing, Or Withdrawal Without Notice, And Of Any Special Listing Conditions Imposed By Our Principals. No Warranties Or Representations Are Made As To The Condition Of The Property Or Any Hazards Contained Therein Are Any To Be Implied.

📍 **101 E Washington St**
Greenville, SC 29601
naief.com

FOR SALE

1010 E. Butler Road, Greenville, SC 29607




Joseph "Earle" Furman, Jr., SIOR
 O: +1 864 232 9040
 C: +1 864 230 9102
efurman@naiearlefurman.com

No Warranty Or Representation, Express Or Implied, Is Made As To The Accuracy Of The Information Contained Herein, And The Same Is Submitted Subject To Errors, Omissions, Changing Of Price, Rental Or Other Conditions, Prior Sale, Lease Or Financing, Or Withdrawal Without Notice, And Of Any Special Listing Conditions Imposed By Our Principals. No Warranties Or Representations Are Made As To The Condition Of The Property Or Any Hazards Contained Therein Are Any To Be Implied.

NAI Earle Furman