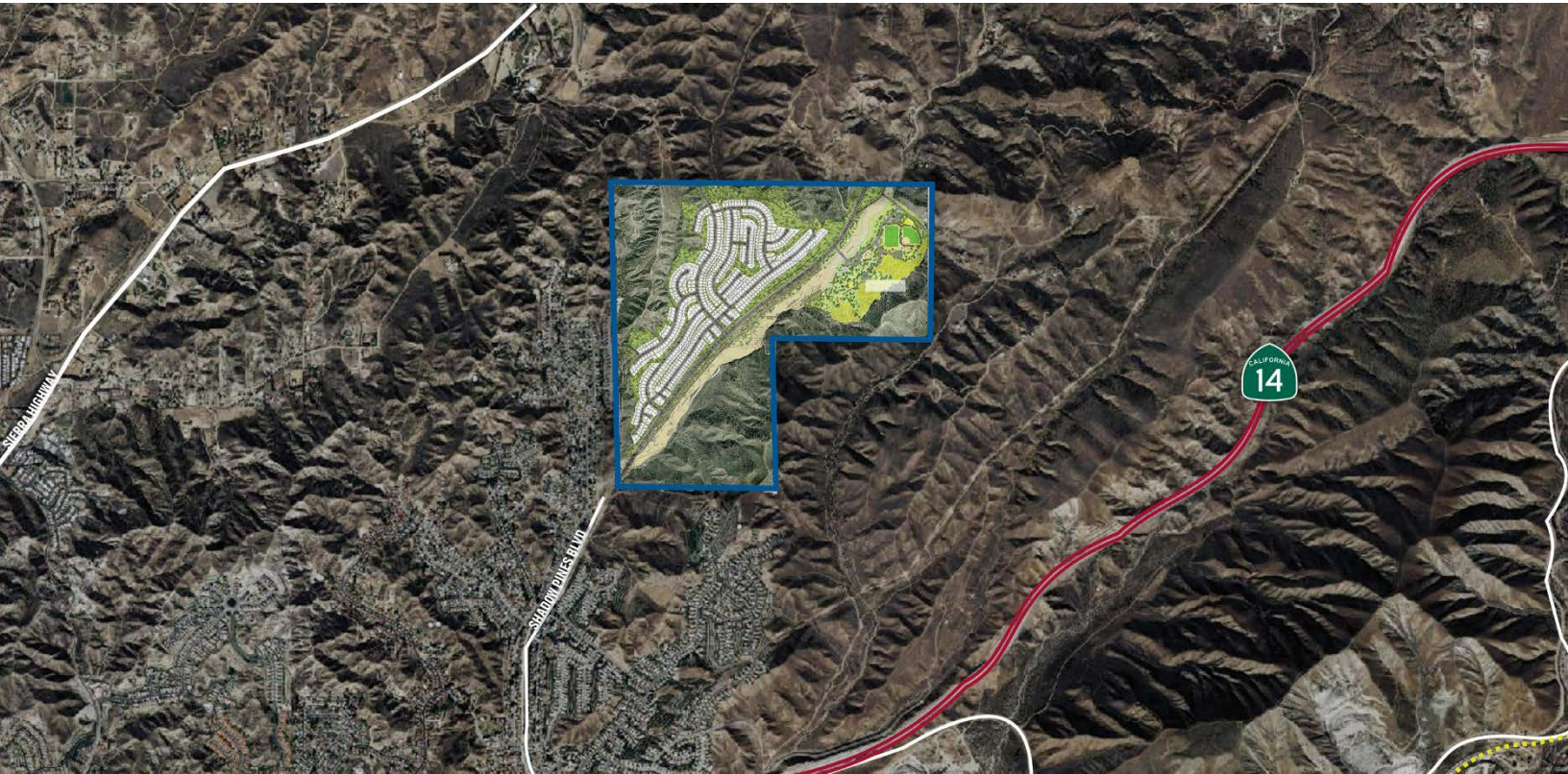


# PARK PLACE ESTATES

Santa Clarita Valley, CA



## PROPERTY OVERVIEW

Situated on approximately 500 gross acres in the Santa Clarita Valley, Park Place Estates features 492 single family lots on approximately 100 net acres with the balance designated for open space and a public sports park. Park Place Estates is a planned community situated in the northeastern part of the Santa Clarita Valley in Los Angeles County. Park Place Estates has a desirable location and has the potential to become annexed into the City of Santa Clarita. This is a rare opportunity for a builder to create a community with amenities such as view lots, open space, and a newly planned sports park adjacent to the Property.

- Park Place Estates boasts spacious mountains, beautiful residential neighborhoods, abundant schools, higher education institutions, cultural arts, recreational activities, fantastic shopping and a variety of restaurants.
- Residents of Park Place Estates will enjoy convenient access to major employment centers, commercial, cultural and recreational areas throughout Southern California.
- Santa Clarita is the perfect blend of city and country.

## QUICK FACTS

ACRES	±500
PRODUCT TYPE	SFD
SITE CONDITION	Unimproved
ZONING	Residential



[VIEW MAP](#)



[REQUEST MORE INFO](#)

EXCLUSIVELY LISTED BY:

**Randy Coe** | [rcoe@landadvisors.com](mailto:rcoe@landadvisors.com) | **Michel Faris** | [mfaris@landadvisors.com](mailto:mfaris@landadvisors.com)

100 Spectrum Center Drive, Suite 1400, Irvine, California 92618 | 949.852.8288 | [www.landadvisors.com](http://www.landadvisors.com)

The information contained herein is from sources deemed reliable. We have no reason to doubt its accuracy but do not guarantee it. It is the responsibility of the person reviewing this information to independently verify it. This flyer is subject to change, prior sale or complete withdrawal. CalBRE#01225173

