

# 108 BAY VIEW DRIVE RICHMOND, KY 40475



## PROPERTY FEATURES

- ⇒ 9,987 SF
- ⇒ B-3 Zoning
- ⇒ 0.978 Acre Lot
- ⇒ 60 Parking Spaces
- ⇒ Just Off US-25 / Berea Rd (20,500 VPD)
- ⇒ 2 Miles From Eastern Kentucky University  
14,000 Students
- ⇒ 3.4 Miles From Blue Grass Army Depot  
Approximately 2,200 Employees
- ⇒ **For Sale: \$915,000**



[VIDEO LINK](#)



## CONTACT US

**Greg Erwin**

859-552-5416

gerwin@thegibsoncompany.com

**Brian Erwin, CCIM**

859-492-5416

berwin@thegibsoncompany.com

[www.thegibsoncompany.com](http://www.thegibsoncompany.com)

The Gibson Company  
1050 Monarch St #200  
Lexington, KY 40513



This drawing is conceptual only and for the convenience of reference. It should not be relied upon as representation express or implied, of the final size, location or dimensions of any lot or building area. The developer expressly reserves the right to make any modifications, revisions, and changes it deems necessary.

# 108 BAY VIEW DRIVE RICHMOND, KY 40475



## PROPERTY PICTURES



## CONTACT US

**Greg Erwin**

859-552-5416

gerwin@thegibsoncompany.com

**Brian Erwin, CCIM**

859-492-5416

berwin@thegibsoncompany.com

[www.thegibsoncompany.com](http://www.thegibsoncompany.com)

The Gibson Company  
1050 Monarch St #200  
Lexington, KY 40513



This drawing is conceptual only and for the convenience of reference. It should not be relied upon as representation express or implied, of the final size, location or dimensions of any lot or building area. The developer expressly reserves the right to make any modifications, revisions, and changes it deems necessary.

# 108 BAY VIEW DRIVE RICHMOND, KY 40475



**PROPERTY AERIAL**



## **CONTACT US**

**Greg Erwin**

859-552-5416

gerwin@thegibsoncompany.com

**Brian Erwin, CCIM**

859-492-5416

berwin@thegibsoncompany.com

[www.thegibsoncompany.com](http://www.thegibsoncompany.com)

The Gibson Company  
1050 Monarch St #200  
Lexington, KY 40513

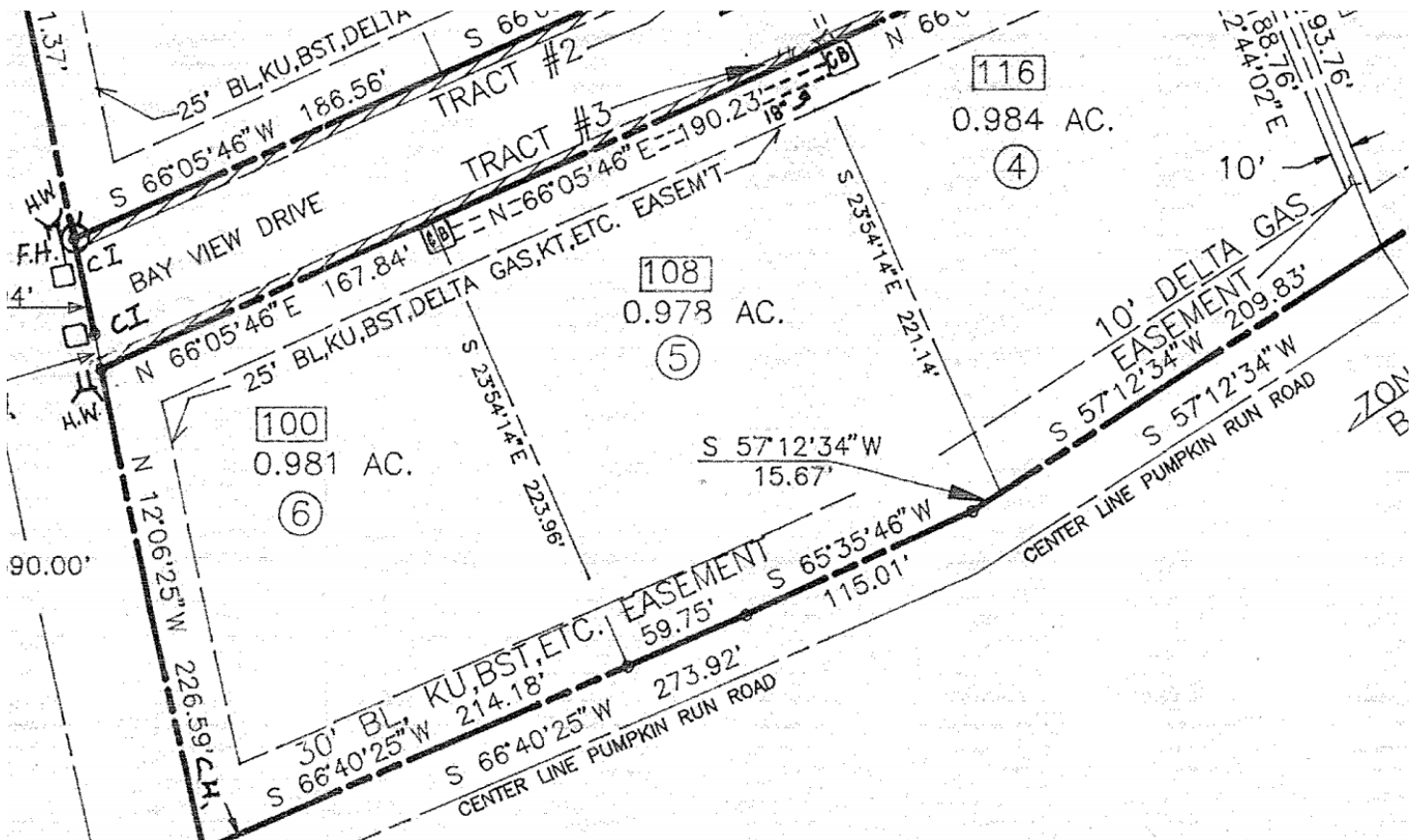


This drawing is conceptual only and for the convenience of reference. It should not be relied upon as representation express or implied, of the final size, location or dimensions of any lot or building area. The developer expressly reserves the right to make any modifications, revisions, and changes it deems necessary.

# 108 BAY VIEW DRIVE RICHMOND, KY 40475



## PROPERTY PLAT



## CONTACT US

**Greg Erwin**  
859-552-5416  
gerwin@thegibsoncompany.com

**Brian Erwin, CCIM**  
859-492-5416  
berwin@thegibsoncompany.com

[www.thegibsoncompany.com](http://www.thegibsoncompany.com)

The Gibson Company  
1050 Monarch St #200  
Lexington, KY 40513



This drawing is conceptual only and for the convenience of reference. It should not be relied upon as representation express or implied, of the final size, location or dimensions of any lot or building area. The developer expressly reserves the right to make any modifications, revisions, and changes it deems necessary.