

Paoli Corporate Center

16 Industrial Boulevard Paoli, PA

Office Space
Available for Lease
Suites Available Immediately



Medical | Legal | Architect | Accounting | Consulting



\$12-16/SF NNN

Availabilities

- Suite 200 1,400 SF*
- Suite 216 2,983 SF*

**Can be combined to 4,383 SF*

Property Highlights

- Scenic setting
- Flexible rates and terms
- On-site management
- Located immediately in front of Paoli Hospital's main entrance
- Convenient access to Route 202 and the PA Turnpike
- Flexible terms
- Turnkey improvements
- High ceilings throughout

For more information, please contact:



Adam Knox
aknox@geisrealty.com
(610) 989-0300

Lou Tonon
ltonon@geisrealty.com
(215) 568-1590

996 Old Eagle School Road
Suite 1117
Wayne, PA 19087

(610) 989-0300 Tel
(610) 989-0234 Fax
www.geisrealty.com

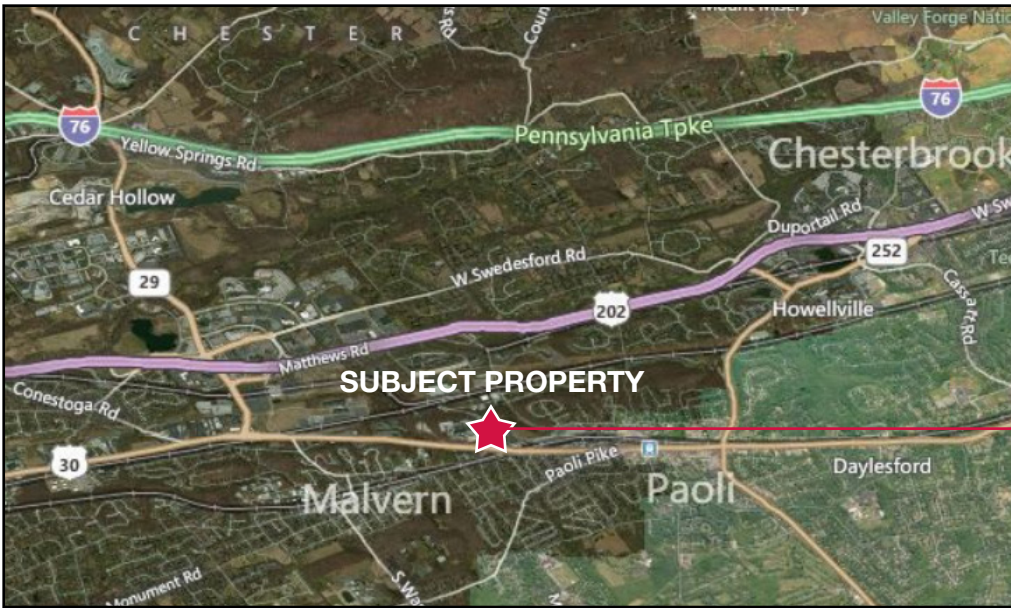
No warranty or representation, express or implied, is made as to the accuracy of the information contained herein, and the same is submitted subject to errors, omissions, change of price, rental or other conditions, prior sale, lease or financing, or withdrawal without notice, and of any special listing conditions imposed by our principals no warranties or representations are made as to the condition of the property or any hazards contained therein are any to be implied.

For Lease

16 Industrial Boulevard

Paoli, Pennsylvania

Close proximity to Paoli Hospital



For more information, please contact:



Adam Knox
aknox@geisrealty.com
(610) 989-0300

Lou Tonon
ltonon@geisrealty.com
(215) 568-1590

996 Old Eagle School Road
Suite 1117
Wayne, PA 19087

(610) 989-0300 Tel
(610) 989-0234 Fax
www.geisrealty.com

No warranty or representation, express or implied, is made as to the accuracy of the information contained herein, and the same is submitted subject to errors, omissions, change of price, rental or other conditions, prior sale, lease or financing, or withdrawal without notice, and of any special listing conditions imposed by our principals no warranties or representations are made as to the condition of the property or any hazards contained therein are any to be implied.