

AIRPARK

BUSINESS CENTER

**FOR LEASE
OFFICE SPACE**

AVAILABLE NOW

NASHVILLE, TN

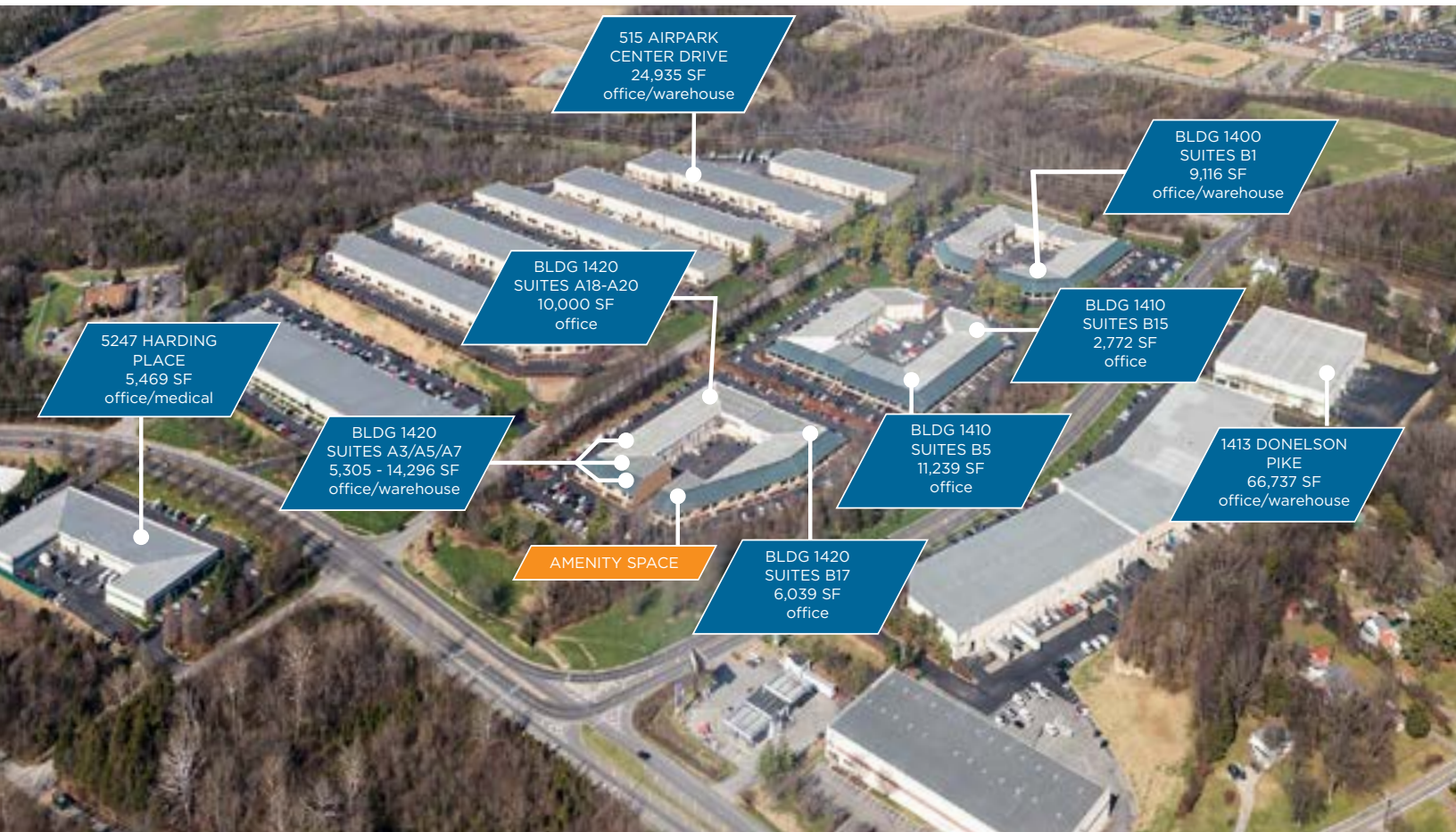
FIRST FLOOR VACANCY

**DIRECT ACCESS TO SUITE
NO COMMON LOBBY OR ELEVATOR**



 CUSHMAN &
WAKEFIELD

 The
Silverman
Group



About AIRPARK

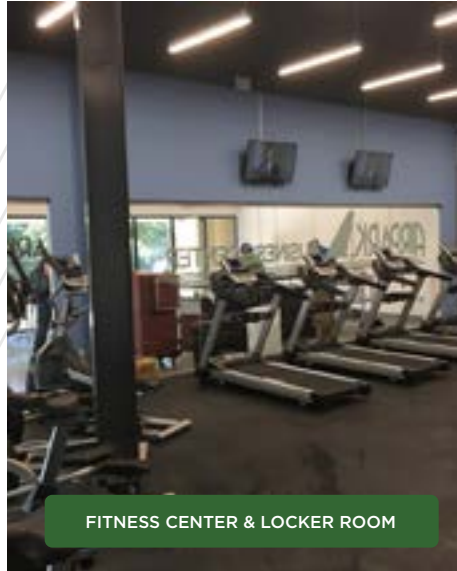
Airpark Business Center includes fourteen pristine landscaped office and industrial flex buildings totaling 1.3 million square feet. The park is centrally located within 3 miles from the Nashville International Airport and I-40, less than 2 miles from I-24, and is minutes from downtown Nashville. Airpark Business Center was recently renovated in 2016 to bring new amenities to the park including, a fitness center and conference center, which are available to all tenants.



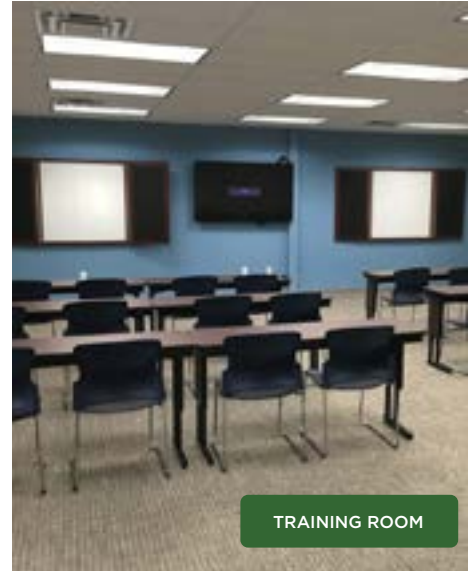
The Silverman Group is a privately owned and operated private equity and real estate development organization based in Basking Ridge, New Jersey. The firm owns and manages over 19,000,000 square feet of office, industrial, retail, and aviation properties as well 4,000 multi-family units throughout the United States. It has over 5,000,000 square feet of commercial space and 2,000 multi-family units currently under development in six states.

Airpark AMENITIES

Airpark Business Center has a new fitness center with state of the art equipment available to all tenants. The facility also includes an on-site conference center for tenants that can accommodate up to 60 people.



FITNESS CENTER & LOCKER ROOM



TRAINING ROOM



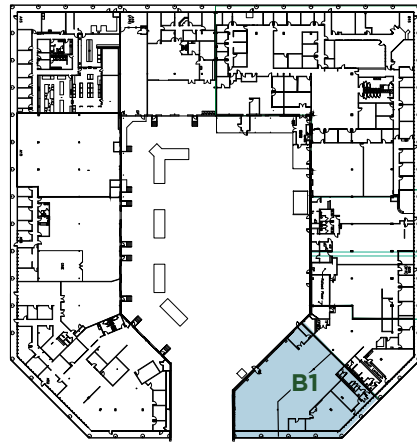
AIRPARK  BUSINESS CENTER



AIRPARK
BUSINESS CENTER

1400 DONELSON PIKE

SUITE B1
9,116 SF



AVAILABLE OFFICE SPACE

SUITE B1
AVAILABLE NOW

9,116 SF
DIVISIBLE

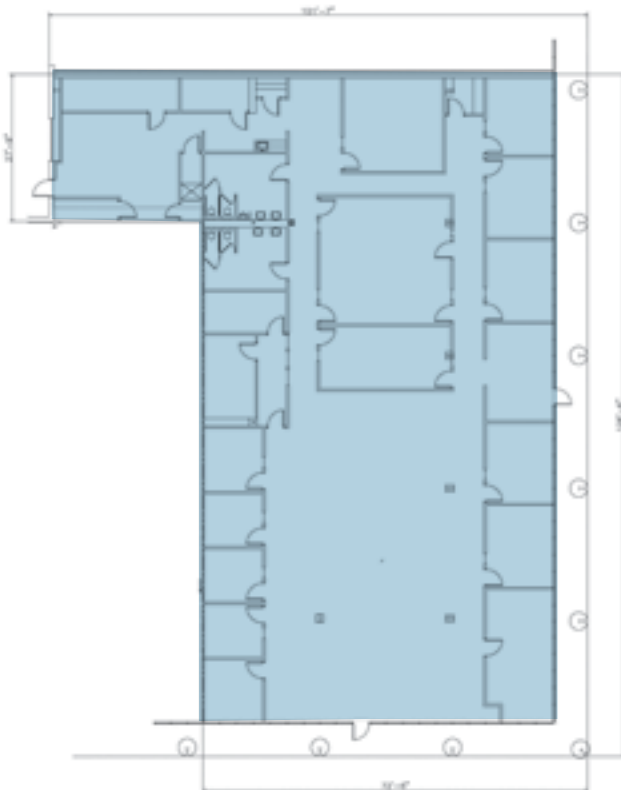
\$10.50/SF NNN
LEASE RATE



AIRPARK
BUSINESS CENTER

1410 DONELSON PIKE

SUITE B5
11,239 SF



AVAILABLE OFFICE SPACE

SUITE B5
AVAILABLE NOW

11,239 SF
AVAILABLE

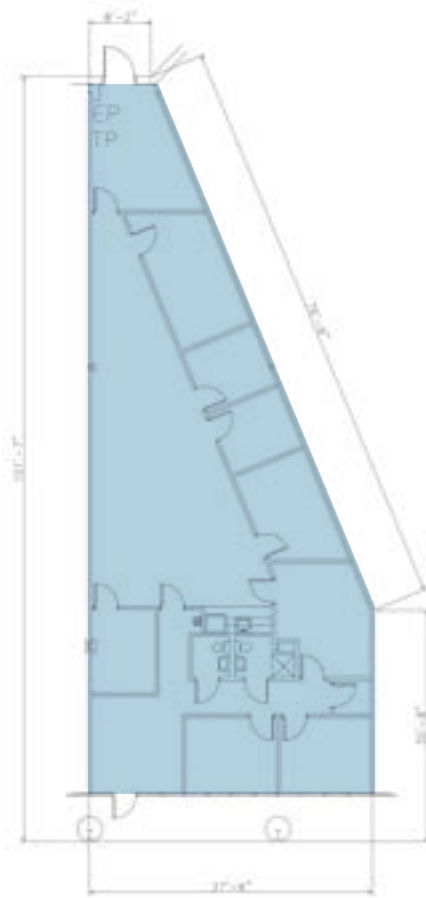
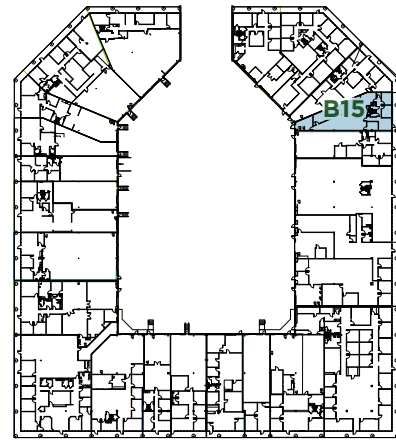
\$11.50/SF NNN
LEASE RATE





1410 DONELSON PIKE

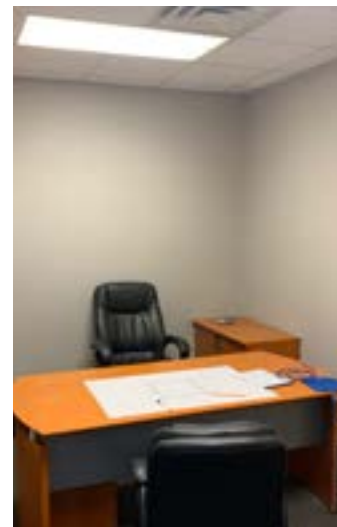
SUITE B15 2,772 SF



SUITE B15
AVAILABLE FEB 1, 2021

2,772 SF
AVAILABLE

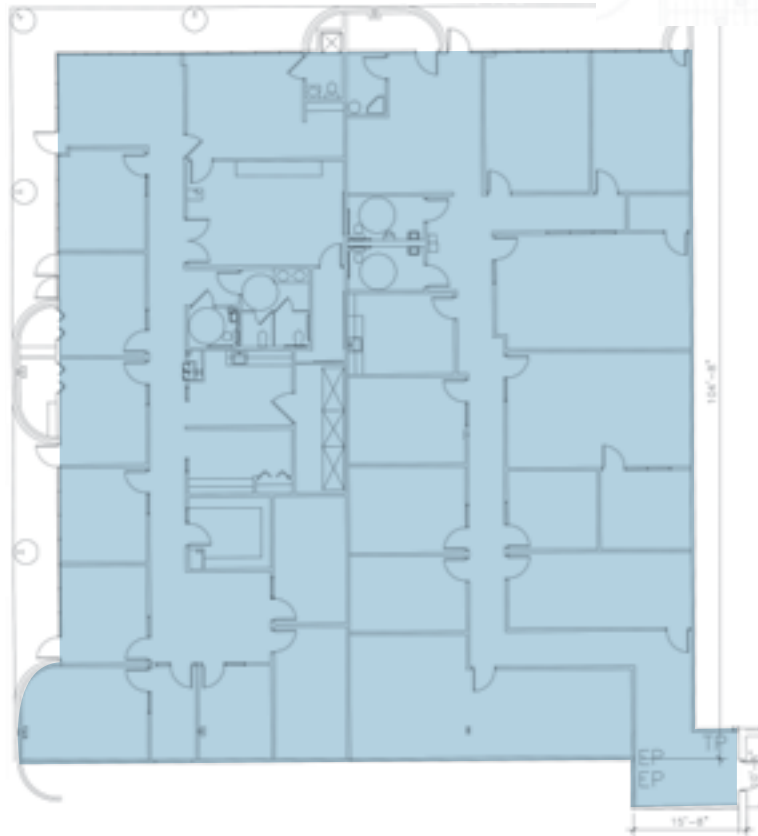
\$11.50/SF NNN
LEASE RATE



AVAILABLE OFFICE SPACE

AIRPARK
BUSINESS CENTER

1420 DONELSON PIKE
SUITE A18-A20
10,000 SF

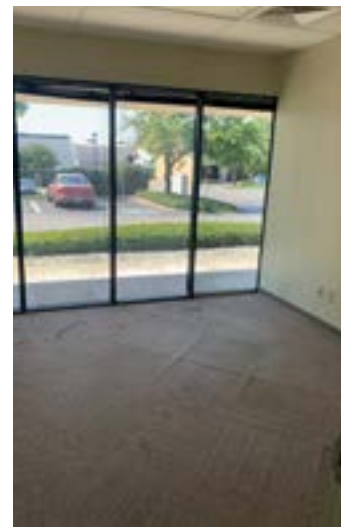


AVAILABLE OFFICE SPACE

SUITE A18-A20
AVAILABLE DEC 1, 2020

10,000 SF
DIVISIBLE TO 5,000 SF

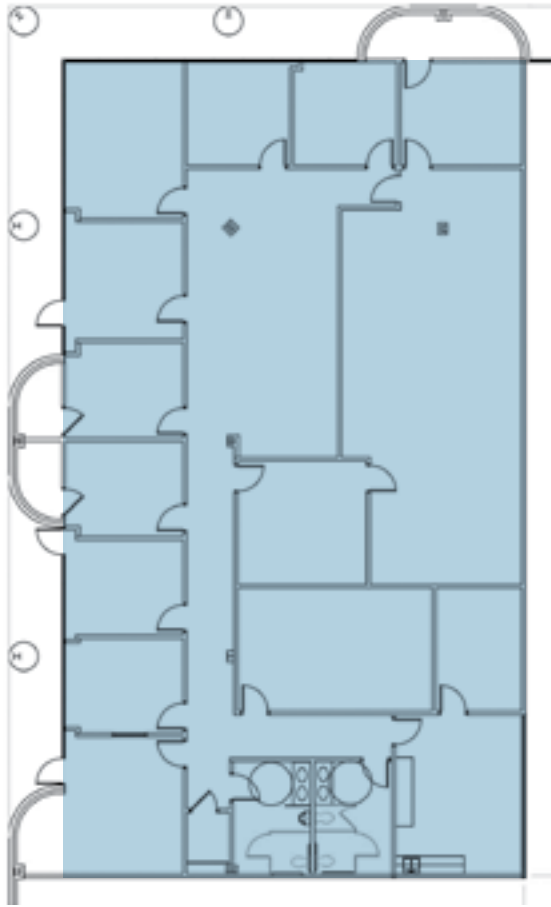
\$11.50/SF NNN
LEASE RATE



AIRPARK
BUSINESS CENTER

1420 DONELSON PIKE

SUITE B17
6,039 SF

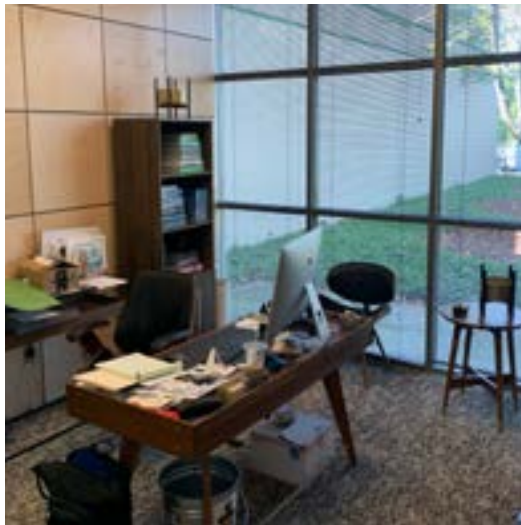


AVAILABLE OFFICE SPACE

SUITE B17
AVAILABLE NOW

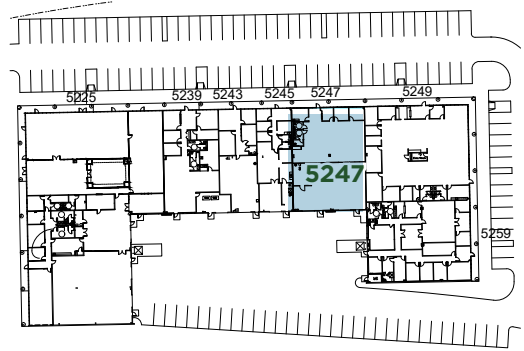
6,039 SF
AVAILABLE

\$11.50/SF NNN
LEASE RATE

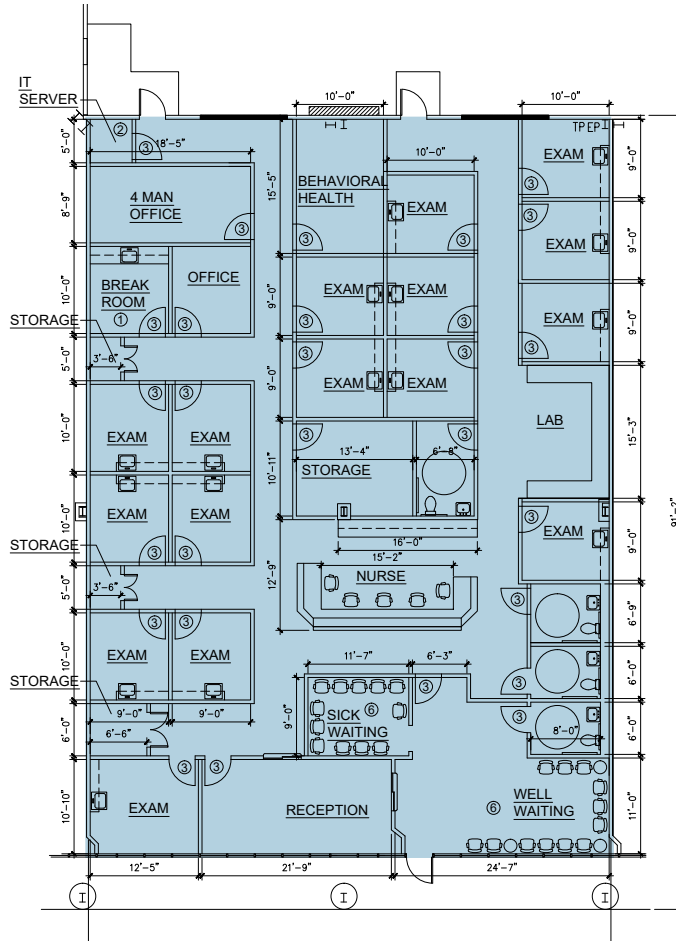


AIRPARK BUSINESS CENTER

5247 HARDING PIKE
5,469 SF



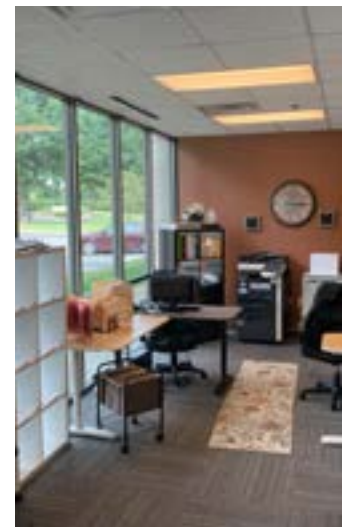
AVAILABLE OFFICE SPACE



SUITE 5247
AVAILABLE NOV 1, 2020

5,469 SF
OFFICE/MEDICAL OFFICE
AVAILABLE

\$16.50/SF NNN
LEASE RATE





Location



CONTACT

MADISON WENZLER
+1 615 301 2821
madison.wenzler@cushwake.com

MICHAEL HAVENS, CCIM
+1 615 301 2813
michael.havens@cushwake.com

RONNIE WENZLER, SIOR
+1 615 301 2803
ronnie.wenzler@cushwake.com

©2020 Cushman & Wakefield. All rights reserved. The information contained in this communication is strictly confidential. This information has been obtained from sources believed to be reliable but has not been verified. NO WARRANTY OR REPRESENTATION, EXPRESS OR IMPLIED, IS MADE AS TO THE CONDITION OF THE PROPERTY (OR PROPERTIES) REFERENCED HEREIN OR AS TO THE ACCURACY OR COMPLETENESS OF THE INFORMATION CONTAINED HEREIN, AND SAME IS SUBMITTED SUBJECT TO ERRORS, OMISSIONS, CHANGE OF PRICE, RENTAL OR OTHER CONDITIONS, WITHDRAWAL WITHOUT NOTICE, AND TO ANY SPECIAL LISTING CONDITIONS IMPOSED BY THE PROPERTY OWNER(S). ANY PROJECTIONS, OPINIONS OR ESTIMATES ARE SUBJECT TO UNCERTAINTY AND DO NOT SIGNIFY CURRENT OR FUTURE PROPERTY PERFORMANCE.

