

764 EAST WINCHESTER
SALT LAKE CITY, UTAH



COMMERCE
REAL ESTATE SOLUTIONS • COMRE.COM
INDEPENDENTLY OWNED AND OPERATED

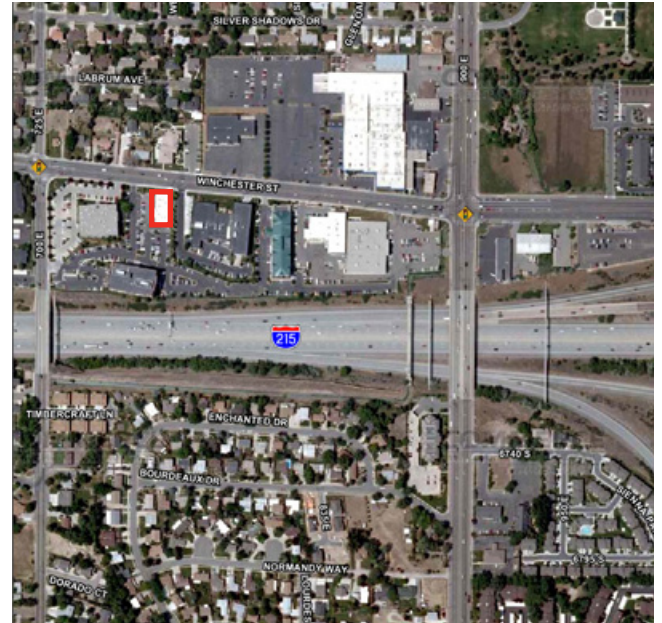
OFFICE SPACE FOR LEASE

MOUNTAINVIEW CORP CENTER II



PROPERTY FEATURES

- \$22.00 / RSF Full Service
- Excellent parking
- Immediate access to I-215
- Close to restaurants, banks, business services and shopping
- I-215 visibility
- Crown signage available on Mountain View Corporate Center II
- Abundant window lines provide for great natural light



Great location with unmatched freeway visibility

For more information, please contact:

MIKE RICHMOND
Executive Director
(801) 303 5434
mrichmond@comre.com

DANA BAIRD, CPM, CCIM
Executive Director
(801) 303 5526
dbaird@comre.com

CUSHMAN & WAKEFIELD | COMMERCE
170 South Main Street, Suite 1600
Salt Lake City, Utah 84101
(801) 322 2000
www.comre.com

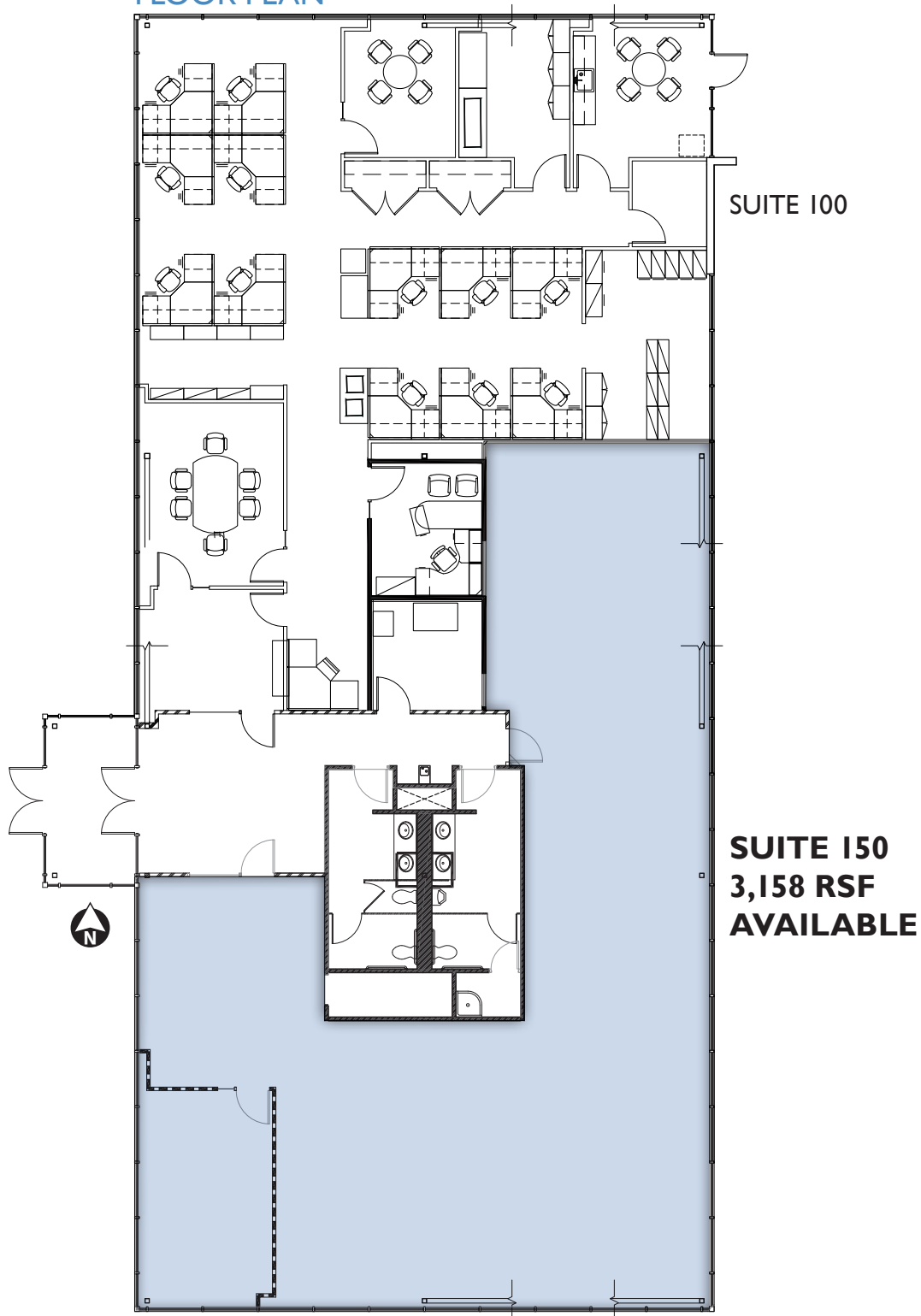
©2015, Commerce Real Estate Solutions. Disclaimer: The above information is given with the obligation that all negotiations relating to the purchase, renting, or leasing of the property described above shall be conducted through Commerce Real Estate Solutions. No warranty or representation, express or implied, is made as to the accuracy of the information contained herein, and same is submitted subject to errors, omissions, change of price, rental or other encumbrances, withdrawal without notice, and to any special listing conditions imposed by the seller. Prospective buyers should conduct their own due diligence. Some aerial photography by DigitalGlobe or Aerials Express.
path: G:\1 - Projects\Richmond, Mike\1 - Flyers\Mountain View Corp Center\ MountainView_Corp_II-Lease

764 EAST WINCHESTER

Salt Lake City, Utah

FOR LEASE

FLOOR PLAN



For more information, please contact:

MIKE RICHMOND
Executive Director
(801) 303 5434
mrichmond@comre.com

DANA BAIRD, CPM, CCIM
Executive Director
(801) 303 5526
dbaird@comre.com

CUSHMAN & WAKEFIELD | COMMERCE
170 South Main Street, Suite 1600
Salt Lake City, Utah 84101
(801) 322 2000
www.comre.com