

LOWER EAST
SIDE

NEW YORK
NY

96 DELANCEY STREET



SPACE DETAILS

LOCATION

North block between Orchard and Ludlow Streets

APPROXIMATE SIZE

Ground Floor 2,500 SF

FRONTAGE

35 FT on Delancey Street

POSSESSION

January 2020

TERM

Negotiable

SITE STATUS

Currently T-Mobile

NEIGHBORS

Bank of America, Starbucks, Russ & Daughters Cafe, Duane Reade, the Tenement Museum, Target, Trader Joe's, Chase, Essex Street Market and Regal Cinemas (coming soon)

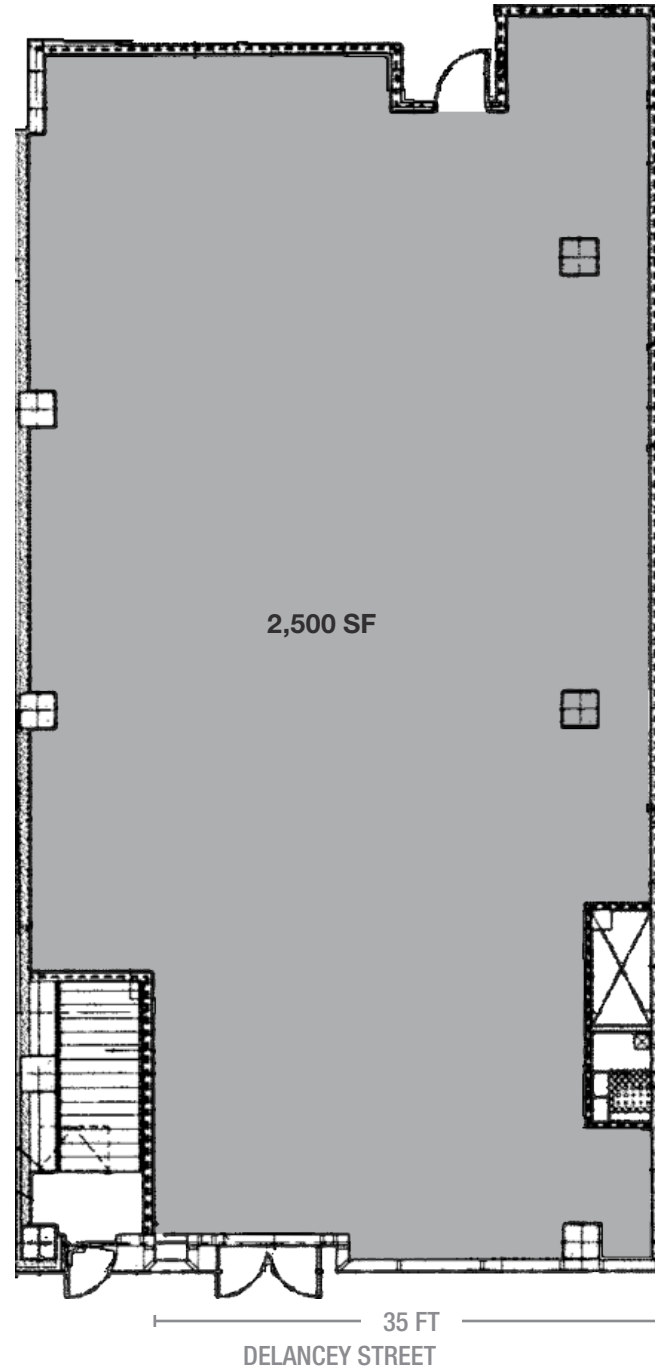
COMMENTS

One block to the Delancey Street and Essex Street subway station servicing the **F** **M** **J** **Z** trains with an annual ridership of 8,458,101

Steps to the Essex Crossing development site, which will bring 1,000 residential units, 450,000 SF of retail space and 400,000 SF of office space

Close proximity to the new 150,000 SF Market Line which will be the largest market in New York City when completed

GROUND FLOOR



AREA RETAIL



CONTACT EXCLUSIVE AGENTS

DAVID ROSENBERG
212.331.0112
david.rosenberg@ngkf.com

MAI SHACHI
212.916.2927
mai.shachi@ngkf.com

RYAN TUCKER
212.916.3369
ryan.tucker@ngkf.com

COMING SOON



NGKF.COM

© 2019 NEWMARK KNIGHT FRANK RETAIL. The information contained herein has been obtained from sources deemed reliable but has not been verified and no guarantee, warranty or representation, either express or implied, is made with respect to such information. Terms of sale or lease and availability are subject to change or withdrawal without notice.