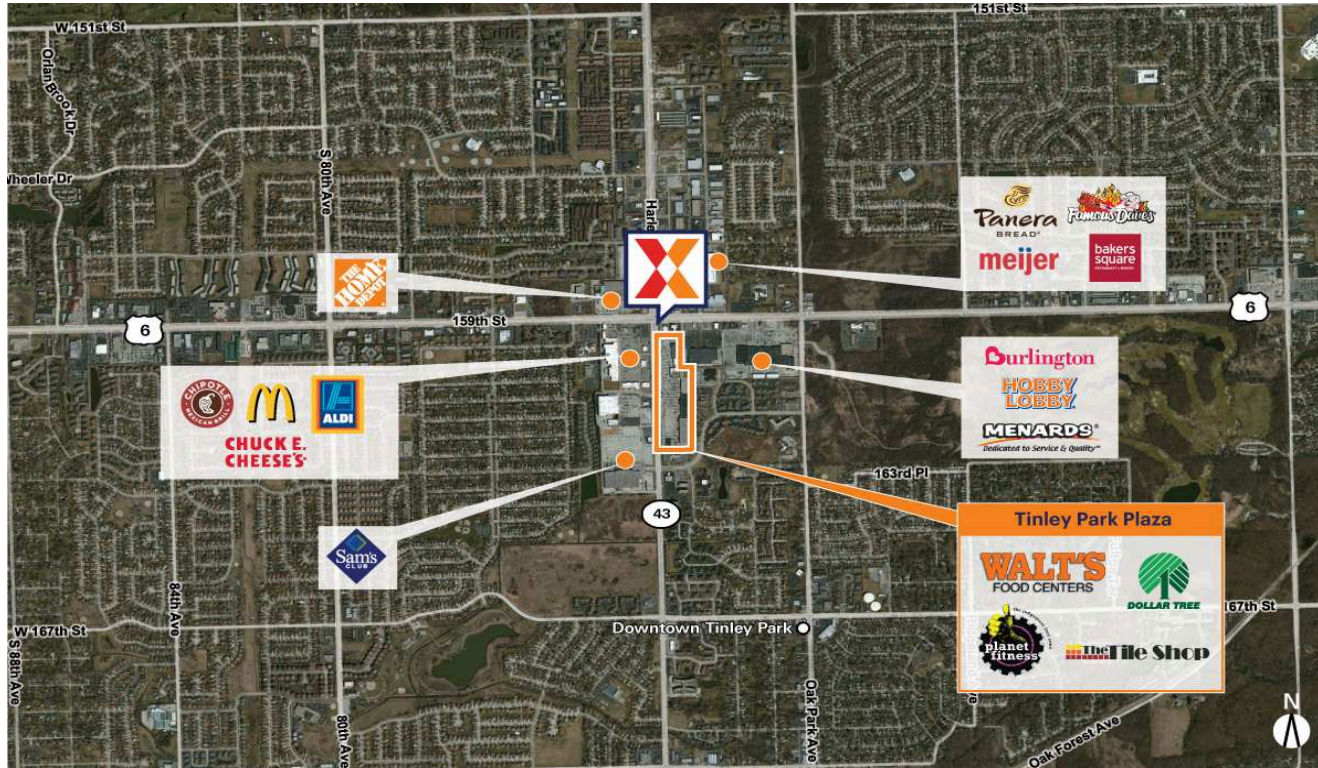


Tinley Park Plaza

Chicago-Naperville-Elgin, IL-IN-WI

41.5989, -87.793

15917 South Harlem Avenue | Tinley Park, IL 60477



Center Size: 248,077 SF



Demographics	1 Mile	3 Mile	5 Mile
	11,937	90,375	200,175
	4,936	34,629	74,917
	\$81,072	\$89,926	\$90,973

High visibility from 65,000+ vehicles daily at the intersection of 159th St and Harlem Ave

Anchored by The Tile Shop, Planet Fitness, Dollar Tree and Walts along with top national retailers Sprint, Blaze Pizza, & Noodles & Company, drawing an estimated 5,200 visits/day and 1.9M+ visits/year

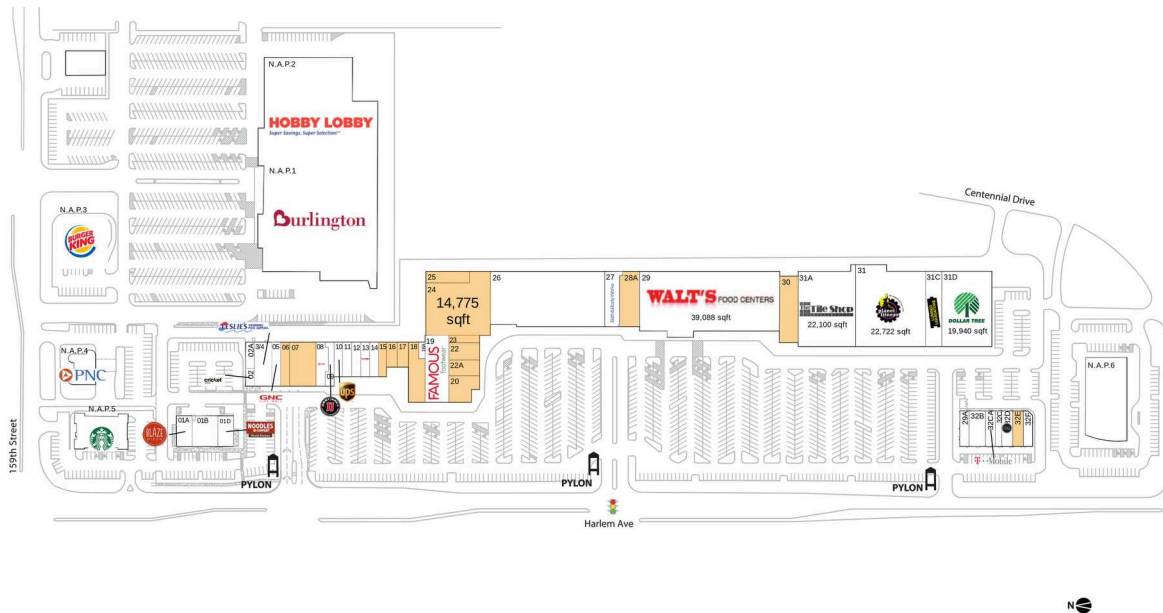
Surrounded by a dense population of 200,000+ with an average household income of \$90,000+ within 5 miles

Tinley Park Plaza

Chicago-Naperville-Elgin, IL-IN-WI

41.5989, -87.793

15917 South Harlem Avenue | Tinley Park, IL 60477



Available Space

06	2,000 SF
07	6,095 SF
15	2,000 SF
16	1,425 SF
17	1,303 SF
18	5,000 SF
20	3,000 SF
22	2,430 SF
22A	1,800 SF
23	1,000 SF
24	14,775 SF
25	2,494 SF
28A	5,000 SF
30	6,000 SF
32E	1,960 SF

Current Retailers

N.A.P.1	Burlington Stores	0 SF	18A	Storage	546 SF
N.A.P.2	Hobby Lobby	0 SF	19	Famous Footwear	8,400 SF
N.A.P.3	Burger King	0 SF	26	Home Line Furniture	32,200 SF
N.A.P.4	PNC Bank	0 SF	27	Bath & Body Works	4,210 SF
N.A.P.5	Starbucks	0 SF	29	Wal'ts Food Center	39,088 SF
N.A.P.6	Medical Center	0 SF	29A	Batteries Plus	1,600 SF
01A	Blaze Pizza	2,500 SF	31	Planet Fitness	22,722 SF
01B	Dental Works	4,017 SF	31A	The Tile Shop	22,100 SF
01D	Noodles & Company	2,500 SF	31C	Lumber Liquidators	6,435 SF
02	Cricket	800 SF	31D	Dollar Tree	19,940 SF
02A	Storage	1,200 SF	32B	America's Best	3,020 SF
3/4	Leslie's Swimming	4,000 SF		Contacts & Eyeglasses	
05	GNC	2,000 SF	32C	GameStop	1,200 SF
08	Comcast Xfinity	2,540 SF	32CA	T-Mobile	1,667 SF
09	Jimmy John's	1,300 SF	32D	Stella's Place	2,040 SF
10	The UPS Store	1,600 SF	32F	Southwestern	1,600 SF
11	USA Pay Day Loans	1,600 SF		Hearing Center	
12	Tinley Park Cleaners	1,600 SF			
13	Sport Clips	1,600 SF			
14	Only Nails	1,210 SF			

1854