

# Publix #1547- South Highlands Shopping Center

350 US-Highway 27 N  
Lake Placid, FL 33852  
Lat 27.296, Long -81.366

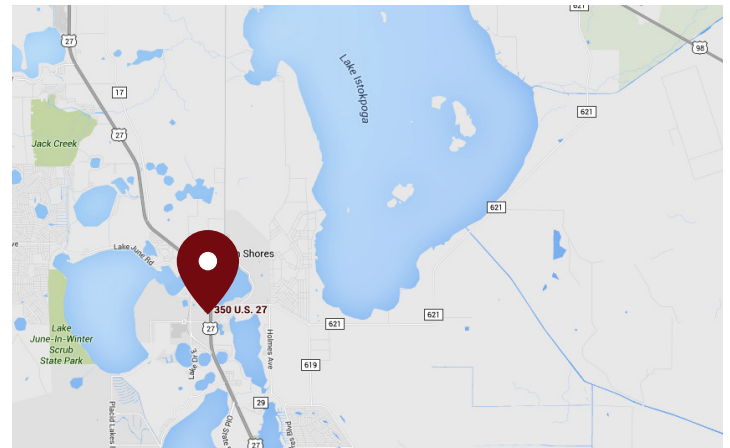
FOR LEASE



1,302 - 4,031 SF & ±0.86 ACRE OP AVAILABLE

## PROPERTY HIGHLIGHTS

- Highlands County Market
- Located on US Highway 27 and Dal Hall Boulevard in the Heart of Lake Placid
- Close Proximity to South Florida State College
- Only Publix-Anchored Center in Lake Placid and the Surrounding Areas
- Trade Area Extends Over 200 Miles
- Multiple Egress/Ingress
- Excellent Visibility and Pylon Signage Available
- Close to Quaint Downtown Shoppes
- Move-in Ready Space Available
- Redeveloped in 2019



DEMOGRAPHICS	1 Mile	3 Miles	5 Miles
Total Population	3,407	11,263	19,467
Daytime Population	4,192	11,750	18,783
Total Households	1,367	4,920	8,581
Avg. HH Income	\$59,624	\$64,798	\$60,467

Data provided by Placer Labs Inc. (www.placer.ai) & Esri

## Tracy Worrell

407.581.6219 | [tworrell@crossmanco.com](mailto:tworrell@crossmanco.com)

3333 South Orange Avenue, Suite 201, Orlando, FL

Licensed Real Estate Broker. No warranty expressed or implied has been made to the accuracy of the information provided herein, no liability assumed for error or omission.

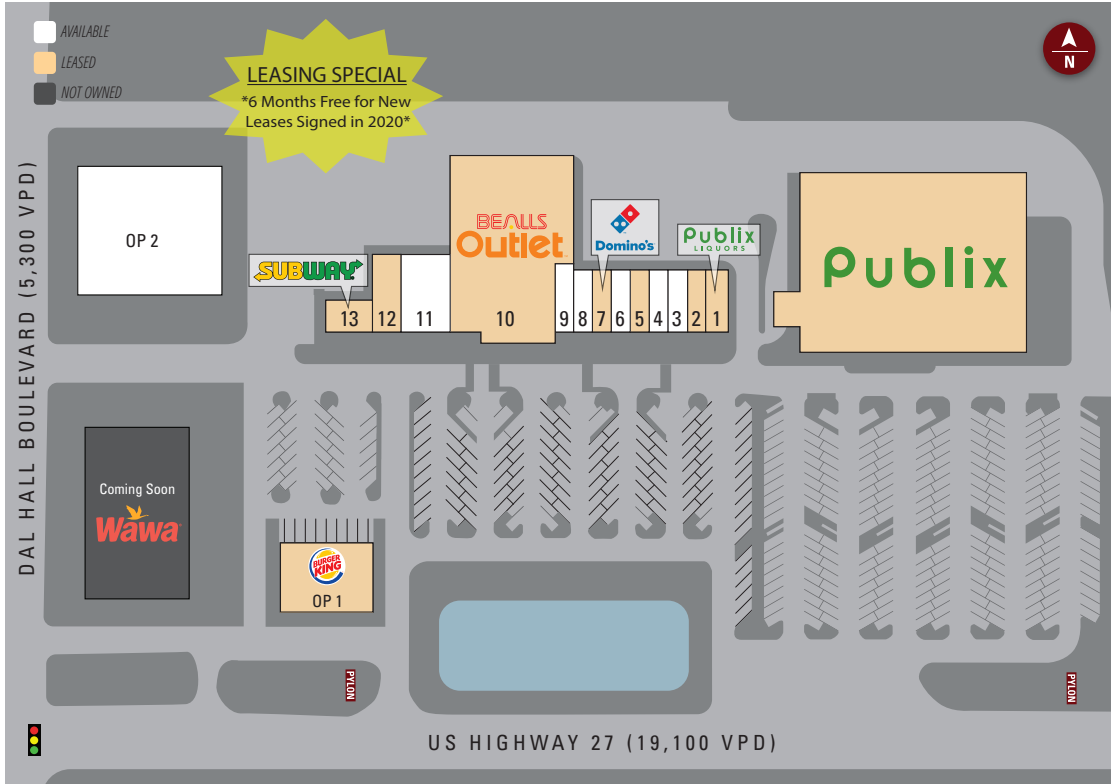


[www.crossmanco.com](http://www.crossmanco.com)

# Publix #1547- South Highlands Shopping Center

350 US-Highway 27 N  
 Lake Placid, FL 33852  
 Lat 27.296, Long -81.366

## SITE PLAN



Suite	Tenant	Size
ANC	Publix	45,600
1	Publix Liquor	1,535
2	Hong Kong Restaurant	1,302
3	AVAILABLE (20 x 65)	1,302
4	AVAILABLE (20 x 65)	1,302
5	D&D Nails	937
6	AVAILABLE (25 x 65)	1,629
7	Domino's Pizza	1,340
8	AVAILABLE (20 x 65)	1,302
9	AVAILABLE (22 x 65)	1,415
10	Bealls Outlet	24,001
11	AVAILABLE (60 x 69)	4,031
12	Designer Dental	2,484
13	Subway	1,617
OP1	Burger King	1 AC
OP2	AVAILABLE	±0.86 AC

**TOTAL 89,797**



### Tracy Worrell

407.581.6219 | [tworrell@crossmanco.com](mailto:tworrell@crossmanco.com)

3333 South Orange Avenue, Suite 201, Orlando, FL

*Licensed Real Estate Broker. No warranty expressed or implied has been made to the accuracy of the information provided herein, no liability assumed for error or omission.*



Crossman & Company

[www.crossmanco.com](http://www.crossmanco.com)

# Publix #1547- South Highlands Shopping Center

350 US-Highway 27 N  
Lake Placid, FL 33852  
Lat 27.296, Long -81.366

## FOOT TRAFFIC OVERVIEW

EST. # OF CUSTOMERS ANNUALLY



EST. # OF VISITS ANNUALLY



AVG. VISITS / CUSTOMER



AVG. LENGTH-OF-STAY / VISIT



TOP 3 DAYS



Saturday	224,305
Friday	219,132
Sunday	191,396

# OF VISITS

TOP 3 HOURS

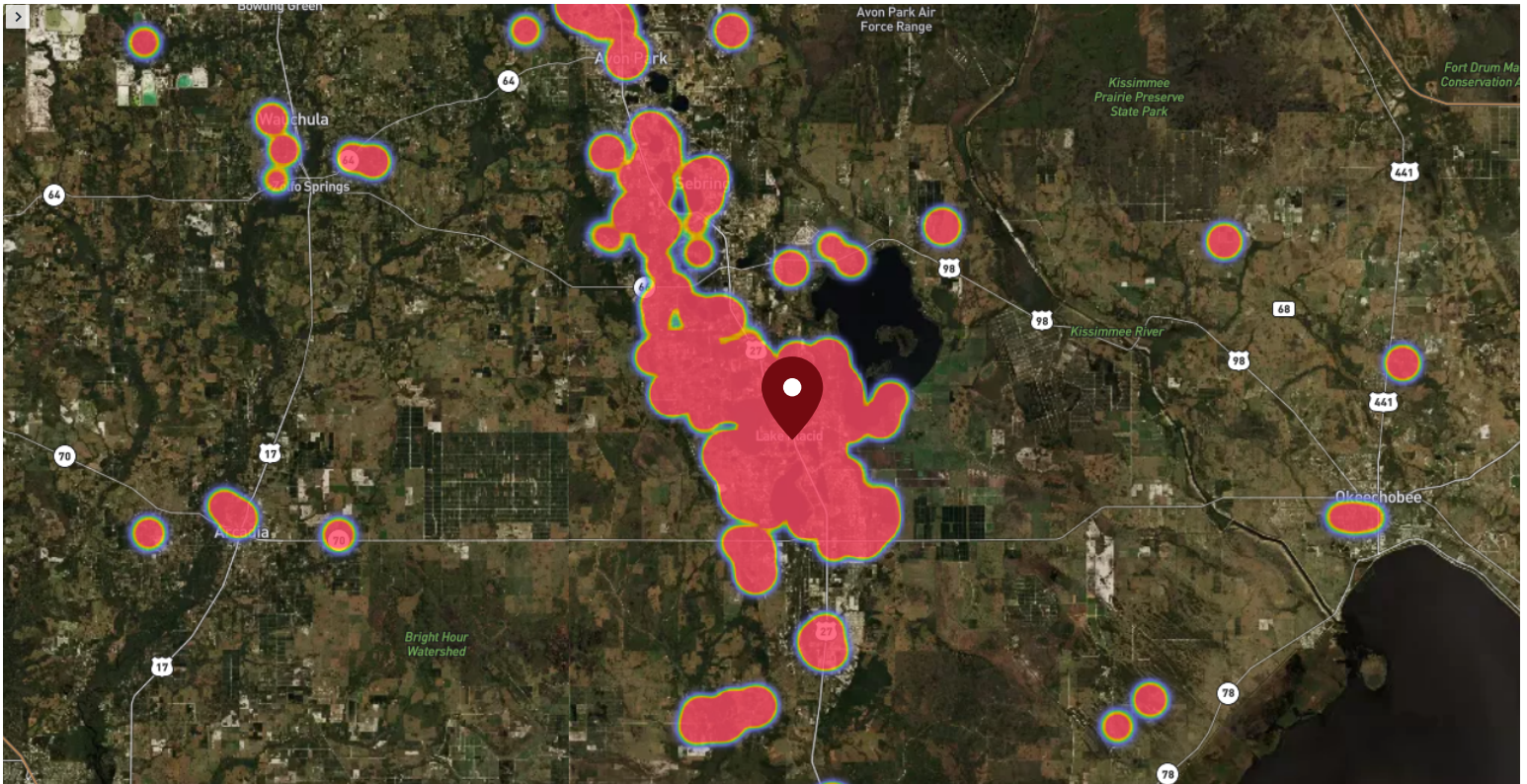


12-1 PM	237,006
1-2 PM	228,641
4-5 PM	224,791

# OF VISITS

Data provided by Placer Labs Inc. (www.placer.ai) Oct 1, 2019 - Sept 30, 2020

## SITE VISIT DENSITY



Red, orange, and yellow colors represent the location of 60% of site visitors

Data provided by Placer Labs Inc. (www.placer.ai)

**Tracy Worrell**

407.581.6219 | [tworrell@crossmanco.com](mailto:tworrell@crossmanco.com)

3333 South Orange Avenue, Suite 201, Orlando, FL

Licensed Real Estate Broker. No warranty expressed or implied has been made to the accuracy of the information provided herein, no liability assumed for error or omission.



Crossman & Company

[www.crossmanco.com](http://www.crossmanco.com)