

# 816 ★ CONGRESS

Class A  
Office Space



1,197 RSF - 50,161 RSF





# 816 ★ CONGRESS

Class A  
Office Space



1,197 RSF - 50,161 RSF

| Suite | RSF        | Date Available |
|-------|------------|----------------|
| 600   | 10,181 RSF | 2/1/20         |
| 700   | 10,171 RSF | 10/1/20        |
| 950   | 2,099 RSF  | 11/1/19        |
| 990   | 1,426 RSF  | Now            |
| 1000  | 33,371 RSF | Now            |
| 1110  | 7,452 RSF  | 4/1/20         |
| 1140  | 1,197 RSF  | Now            |
| 1220  | 7,072 RSF  | 4/1/20         |
| 1250  | 7,965 RSF  | 4/1/21         |
| 1300* | 34,560 RSF | 4/1/21         |
| 1400  | 21,240 RSF | 11/1/22        |
| 1450* | 15,601 RSF | 4/1/21         |
| 1600  | 9,220 RSF  | 1/1/20         |
| 1950  | 7,030 RSF  | Now            |

\*CONTIGUOUS TO 50,161 RSF



## BUILDING OVERVIEW



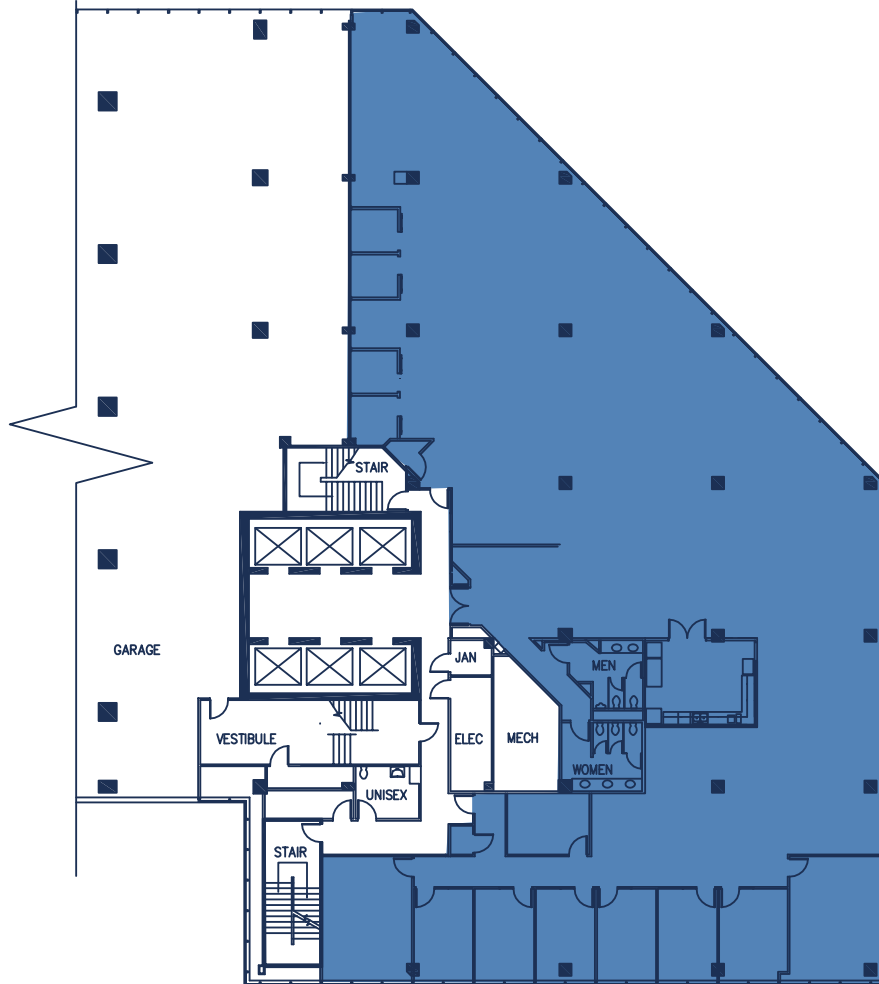
## BUILDING HIGHLIGHTS

- Modern fitness center
- Spa-like locker rooms and showers
- Three conference room facilities
- Onsite management
- 24-hour security
- Large indoor lounge with TV and kitchenette
- Outdoor terrace overlooking the State Capitol
- Versatile spaces - for creative or professional
- Energy Star labeled
- Indoor/outdoor areas for private events
- Downtown and Hill Country Views



# AVAILABLE SPACE

Sixth Floor

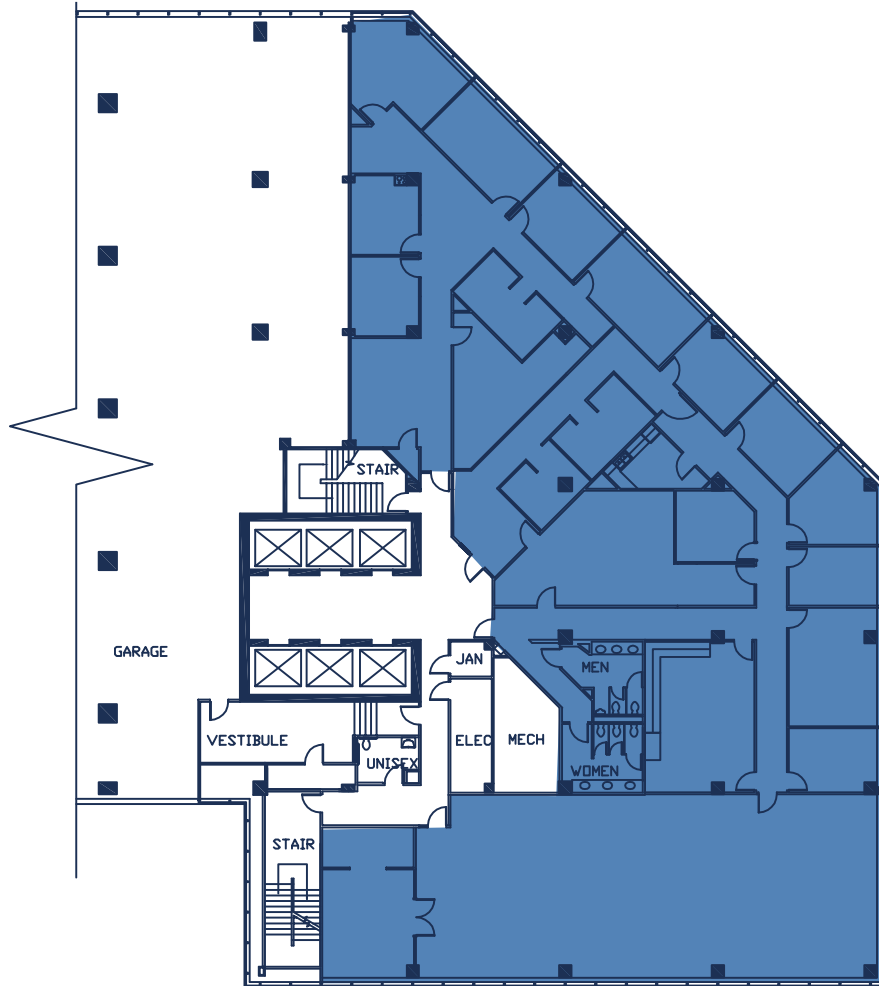


Suite 600  
10,181 RSF  
Available 2/1/20



# AVAILABLE SPACE

Seventh Floor

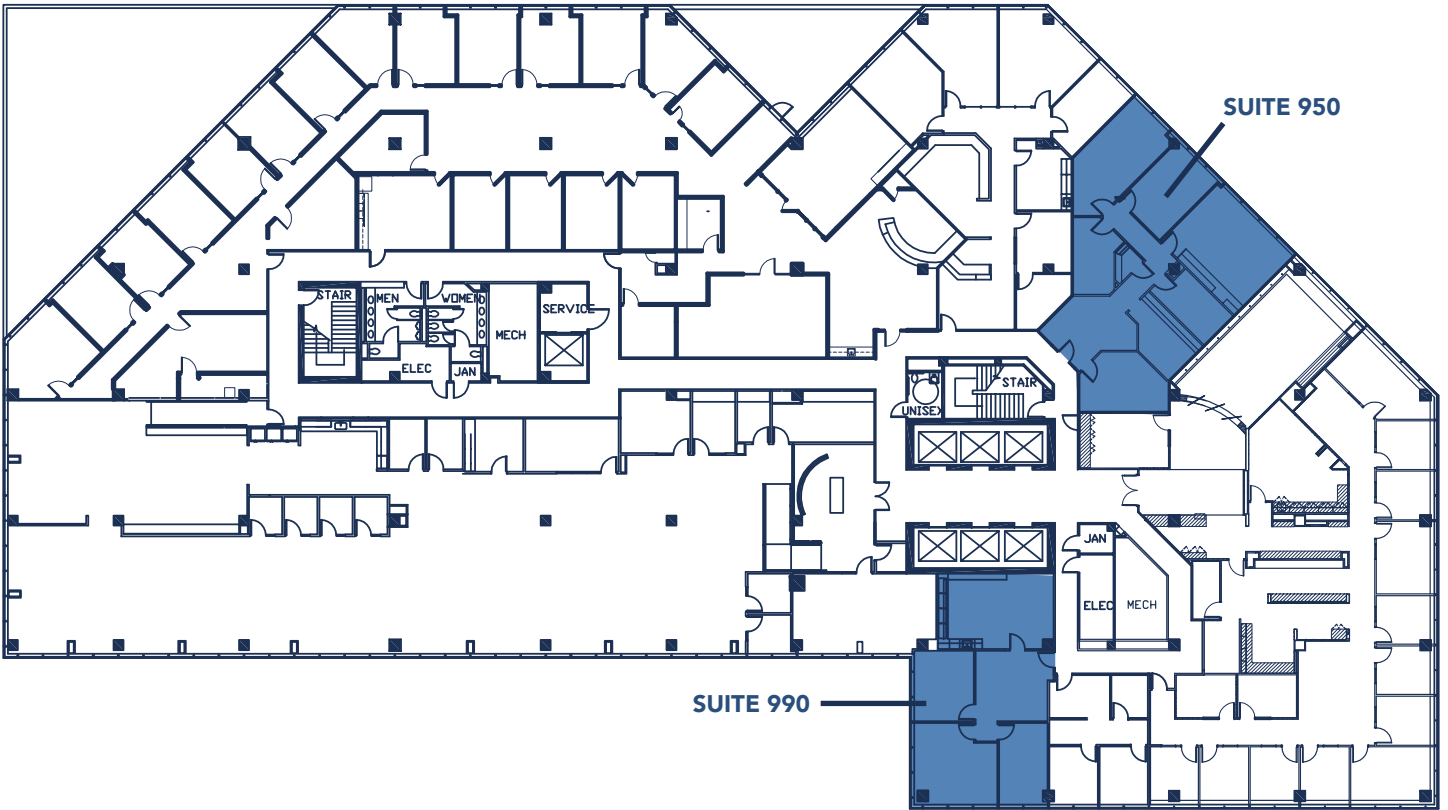


Suite 700  
10,171 RSF  
Available 10/1/20



# AVAILABLE SPACE

Ninth Floor



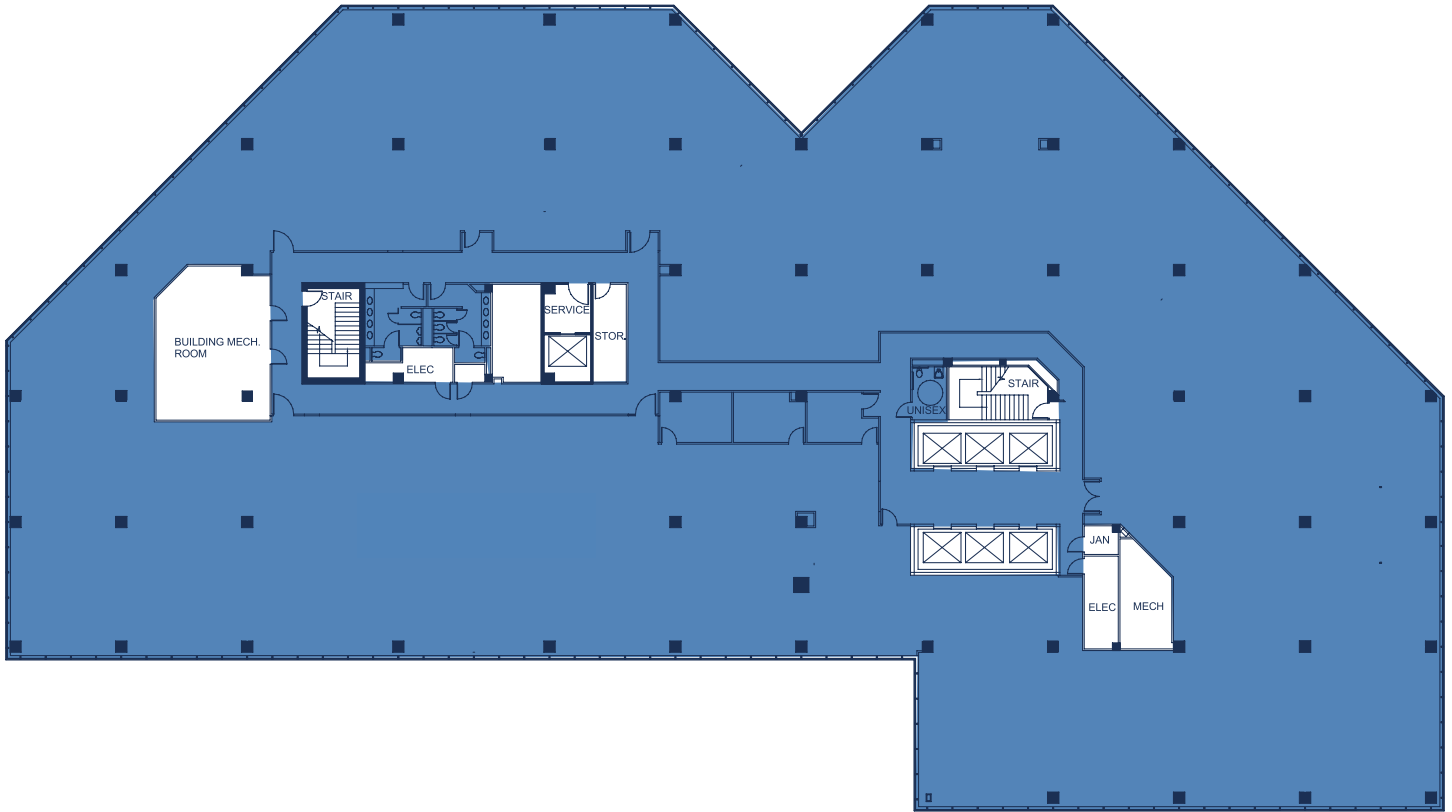
Suite 950  
2,099 RSF  
Available 11/1/19

Suite 990  
1,426 RSF  
Available Now



# AVAILABLE SPACE

Tenth Floor

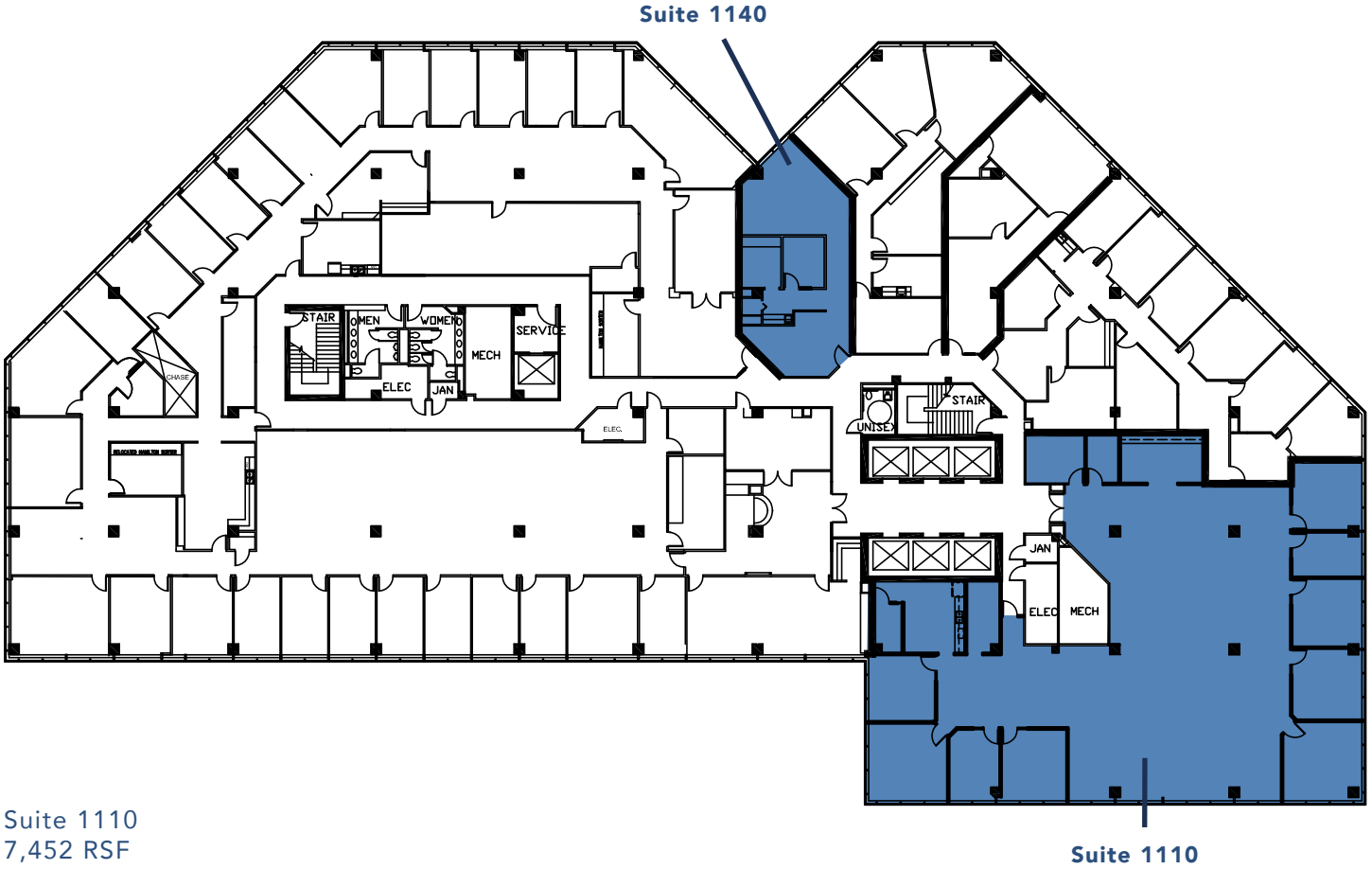


Suite 1000  
33,371 RSF  
Available Now



# AVAILABLE SPACE

Eleventh Floor



Suite 1110  
7,452 RSF  
Available 4/1/20

Suite 1140  
1,197 RSF  
Available Now





# AVAILABLE SPACE

Twelfth Floor



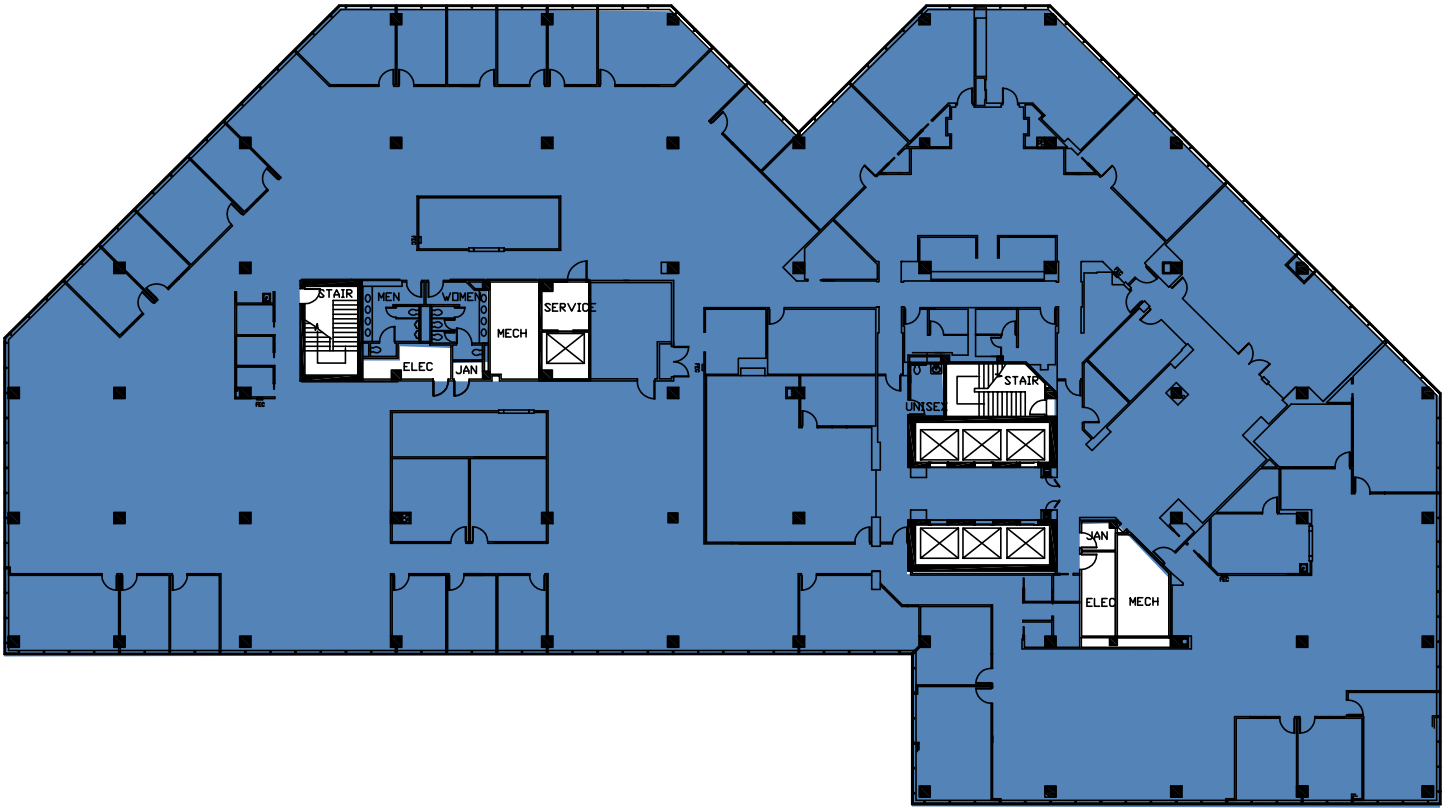
Suite 1220  
7,072 RSF  
Available 4/1/20

Suite 1250  
7,965 RSF  
Divisible to 4,125 RSF  
Available 4/1/21

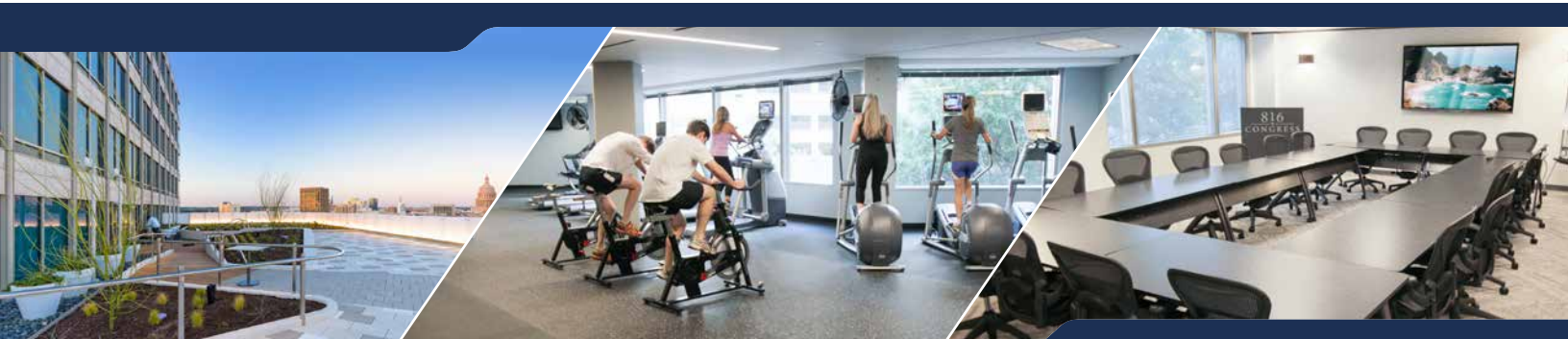


# AVAILABLE SPACE

Thirteenth Floor

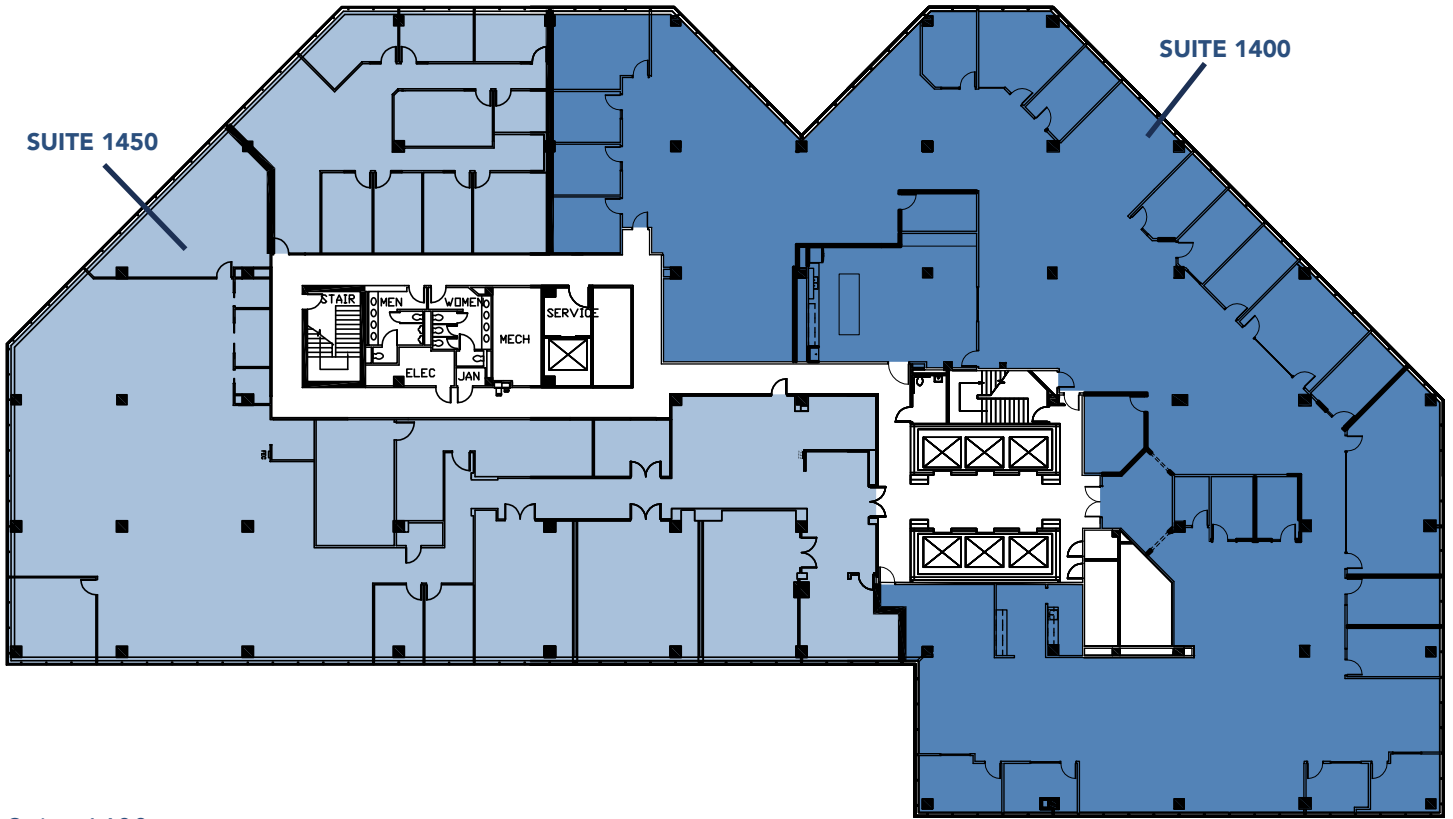


Suite 1300  
34,560 RSF  
Available 4/1/21



# AVAILABLE SPACE

Fourteenth Floor



Suite 1400  
21,240 RSF  
Available 11/1/22

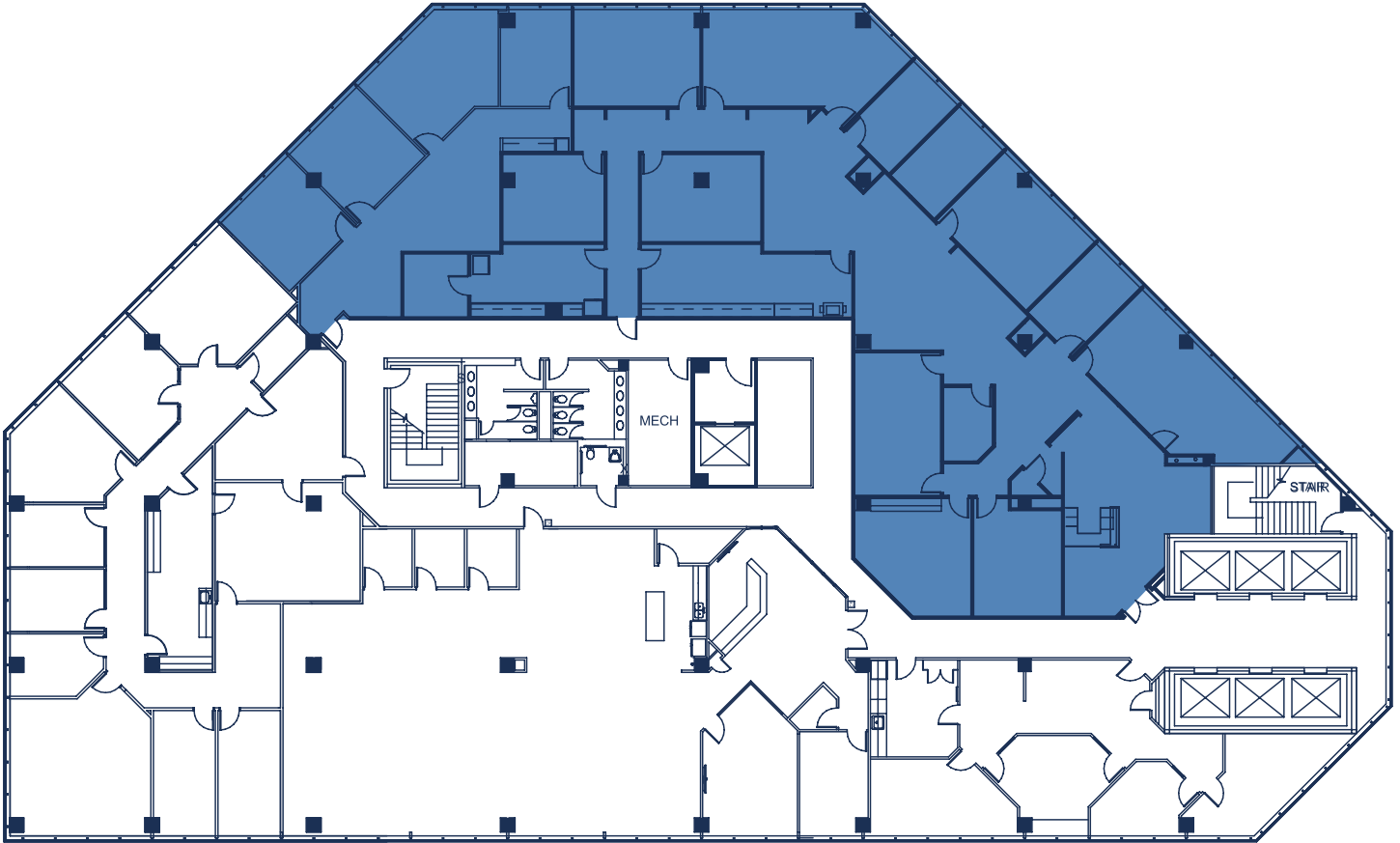
Suite 1450  
15,601 RSF  
Available 4/1/21





# AVAILABLE SPACE

Sixteenth Floor

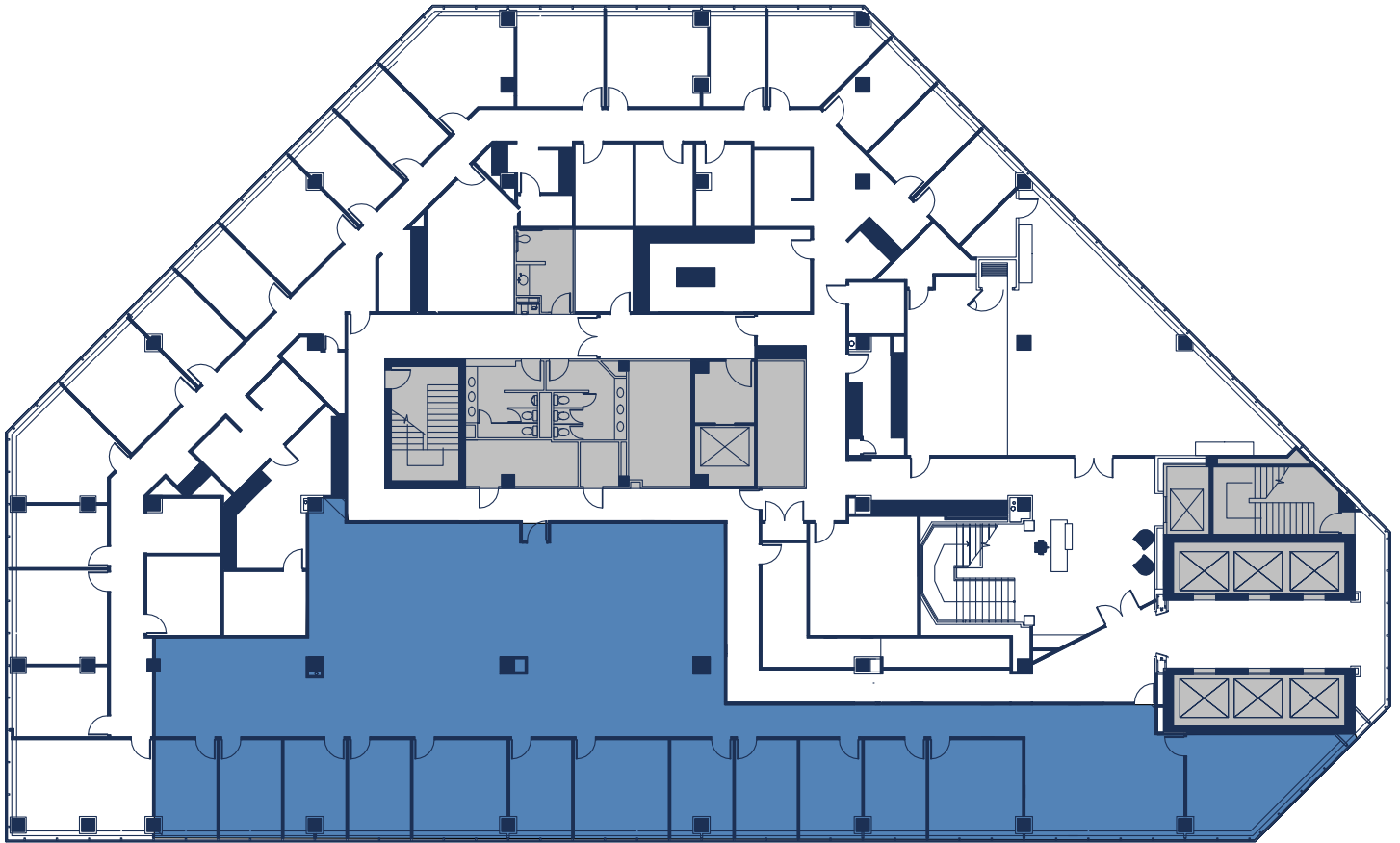


Suite 1600  
9,220 RSF  
Divisible to 7,378 RSF  
Available 1/1/20



# AVAILABLE SPACE

Nineteenth Floor



Suite 1950  
7,030 RSF  
Available Now



# 816 ★ CONGRESS



For office leasing information, contact:

**RACHEL COULTER**

Rachel.Coulter@am.jll.com  
512.225.1733

**TRAVIS ROGERS**

Travis.Rogers@am.jll.com  
512.225.2718



Professionally developed and owned by:

