
10 ACRES R-1 DEVELOPMENT LAND

1211 & 1231 Smithland Road, Harrisonburg, VA 22802

Executive Summary



OFFERING SUMMARY

Sale Price: \$850,000

Lot Size: 10.14 Acres

Tax Parcels: 2 Tax Parcels

Zoning: R-1

Utilities: Public Water Available
Public Sewer Available

MLS#: 576504



PROPERTY OVERVIEW

10 acres consisting of 2 tax map parcels located conveniently within the city limits of Harrisonburg, VA. Only a few miles from Interstate 81 exit 247 and minutes from Smithland Elementary, Skyline Middle School, Spotswood Country Club, Valley Mall, James Madison University, and all Harrisonburg amenities and restaurants. Zoned R1 which allows for low density, relatively spacious single family residential development with a minimum lot size of 10,000 SF. Public water and sewer are available to this site. This property is located on highly desirable Smithland Road and surrounded by single family homes and farmland.

For More Information:

Butch Strawderman

540.246.5959

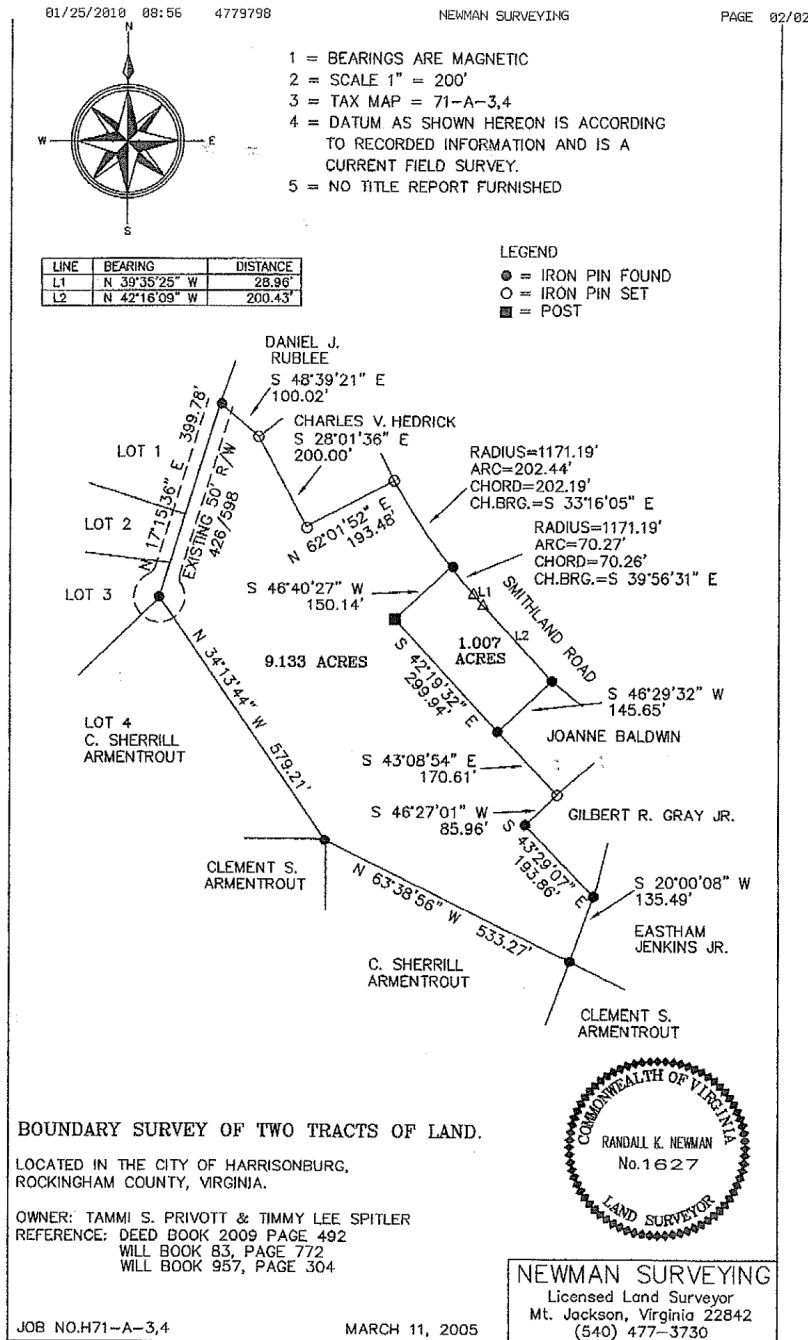
butch.strawderman@cottonwood.com

COTTONWOOD
COMMERCIAL
A COMMERCIAL REAL ESTATE BROKERAGE

10 ACRES R-1 DEVELOPMENT LAND

1211 & 1231 Smithland Road, Harrisonburg, VA 22802

PLAT



For More Information:

Butch Strawderman

540.246.5959

butch.strawderman@cottonwood.com

COTTONWOOD
COMMERCIAL
 A COMMERCIAL REAL ESTATE BROKERAGE

10 ACRES R-1 DEVELOPMENT LAND

1211 & 1231 Smithland Road, Harrisonburg, VA 22802

Location Maps



For More Information:

Butch Strawderman

540.246.5959

butch.strawderman@cottonwood.com

COTTONWOOD
COMMERCIAL
A COMMERCIAL REAL ESTATE BROKERAGE