

19206 McLane St

N Palm Springs, CA
0.46 Acres

Features

Small lot (0.46 acres) in the North Palm Springs Business Park

.....
Site dimension:

110' x 182.33'

.....
Fully improved lot (minus sewer)

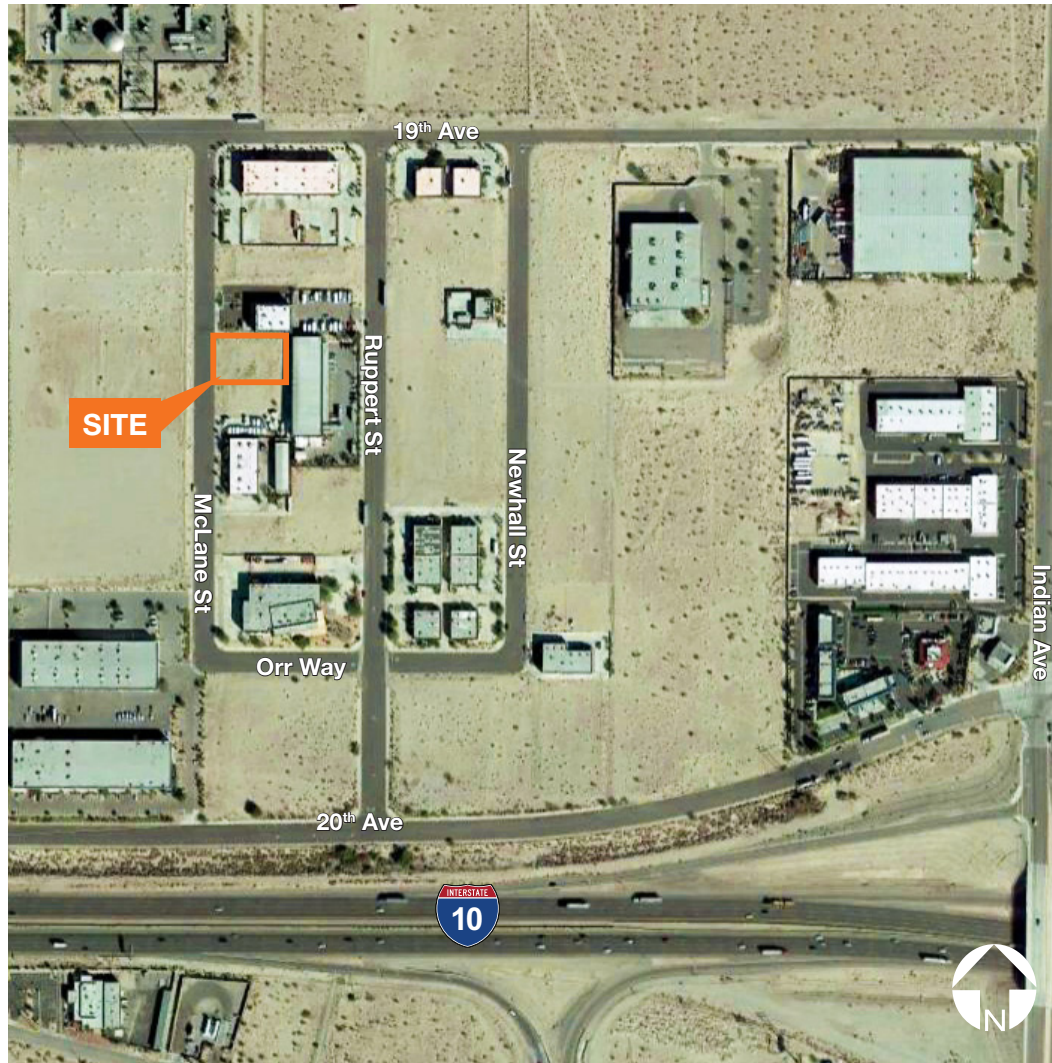
.....
Extra large water line to site:

1 1/4" versus 3/4" line

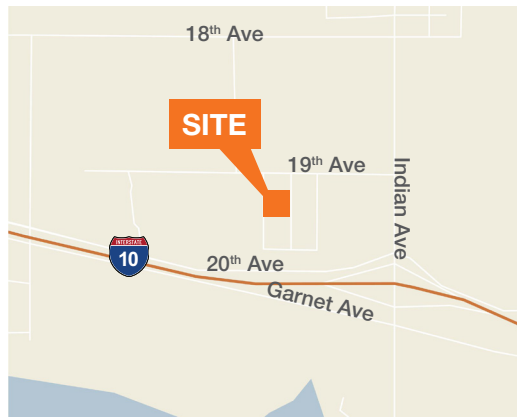
.....
Convenient access to the I-10 Freeway

.....
Available adjacent lot on south side of property, can be combined for a larger parcel

.....
APN: 666-392-005



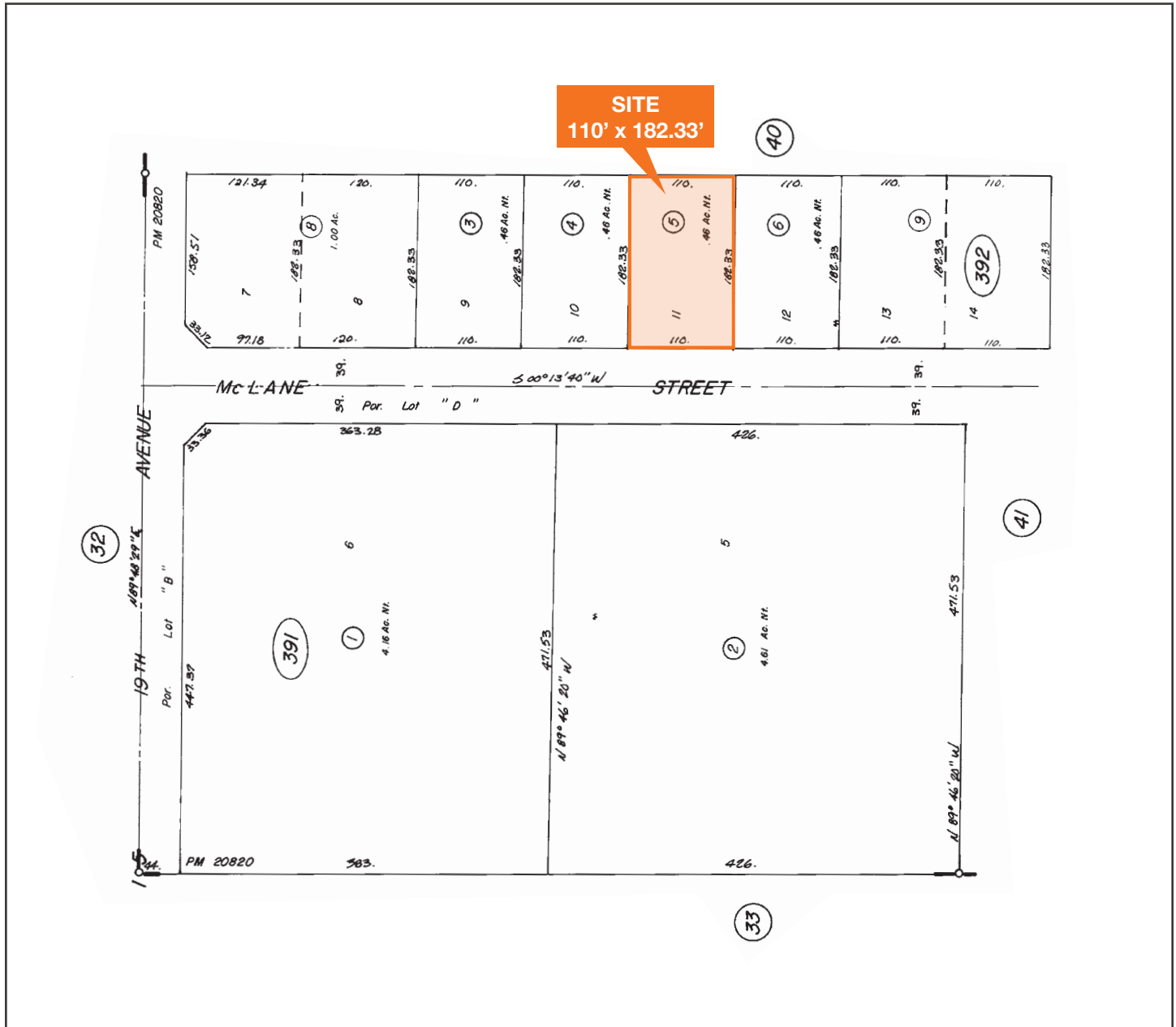
Map



Contact

LR Sanders
Sr Vice President
858.369.3078
Irs@kiddermathews.com
Lic #00480272

19206 McLane St, N Palm Springs, CA



Contact

LR Sanders
 Sr Vice President
 858.369.3078
 lrs@kiddermathews.com
 Lic #00480272