



MERRILL GARDENS

SENIOR LIVING

5601 24<sup>TH</sup> AVE. NW  
SEATTLE, WA 98109



JSH PROPERTIES, INC.

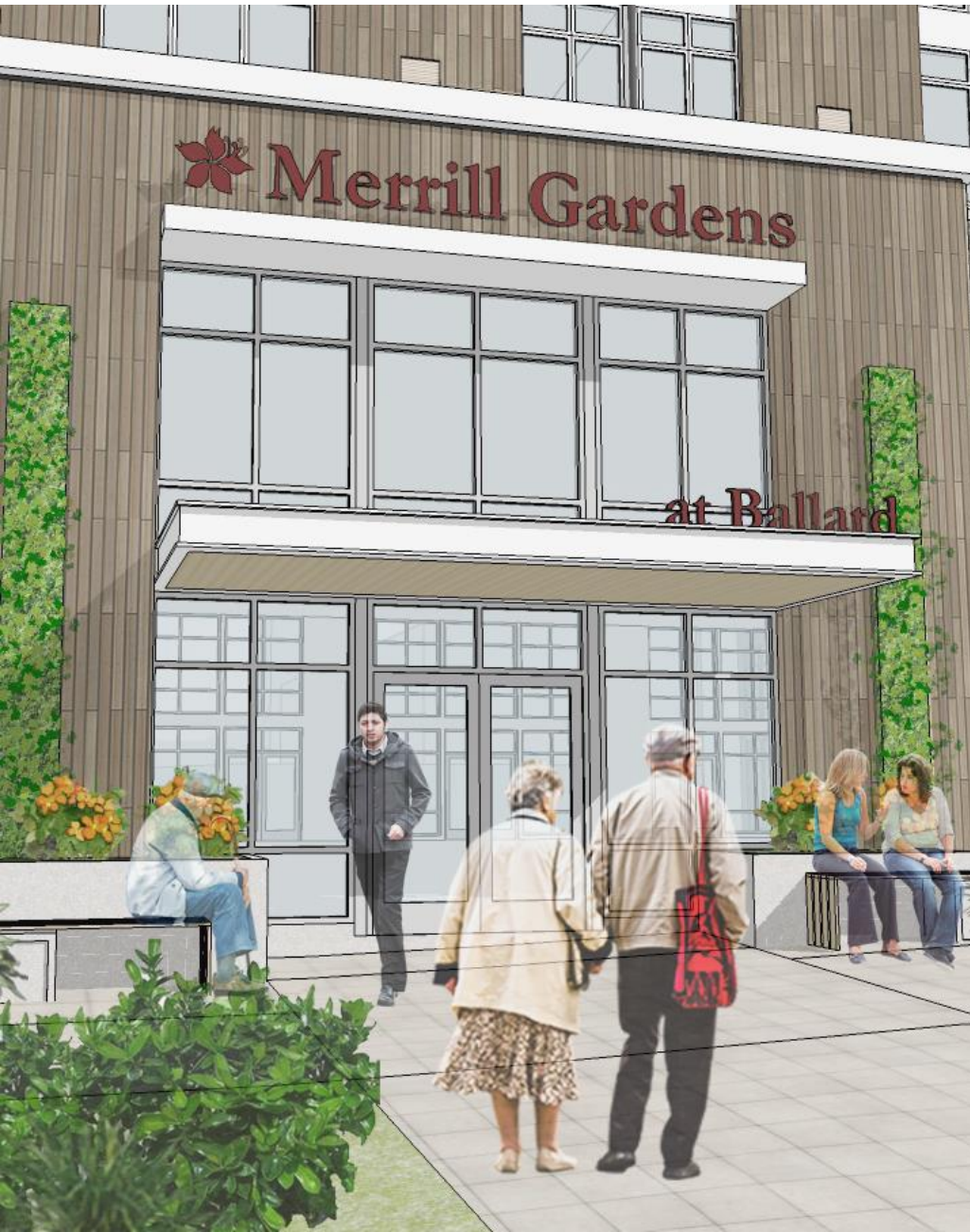
1809 7<sup>TH</sup> AVE. STE 1209, SEATTLE WA 98101

JACOB MORGAN  
425.455.0500

JACOBM@JSHPROPERTIES.COM

TRACY CORNELL  
206.948.0630

TRACYC@JSHPROPERTIES.COM



**Property Details:**

Excellent opportunity to lease new retail space in Ballard. Join retailers such as Bartell's, QFC, Tall Grass Bakery, Banfield Pet Hospital, People's Bank, BECU and Starbucks coffee.

**Address:**

5601 24<sup>th</sup> Ave. NW  
Seattle, WA 98109

**Available Space:**

Street level retail on NW 56<sup>th</sup> Street and 24<sup>th</sup> Ave NW:

**Space 1: 928 rsf**

**Space 2: 1,178 rsf**

**Space 3: 1,207 rsf**

**Delivery Date:**

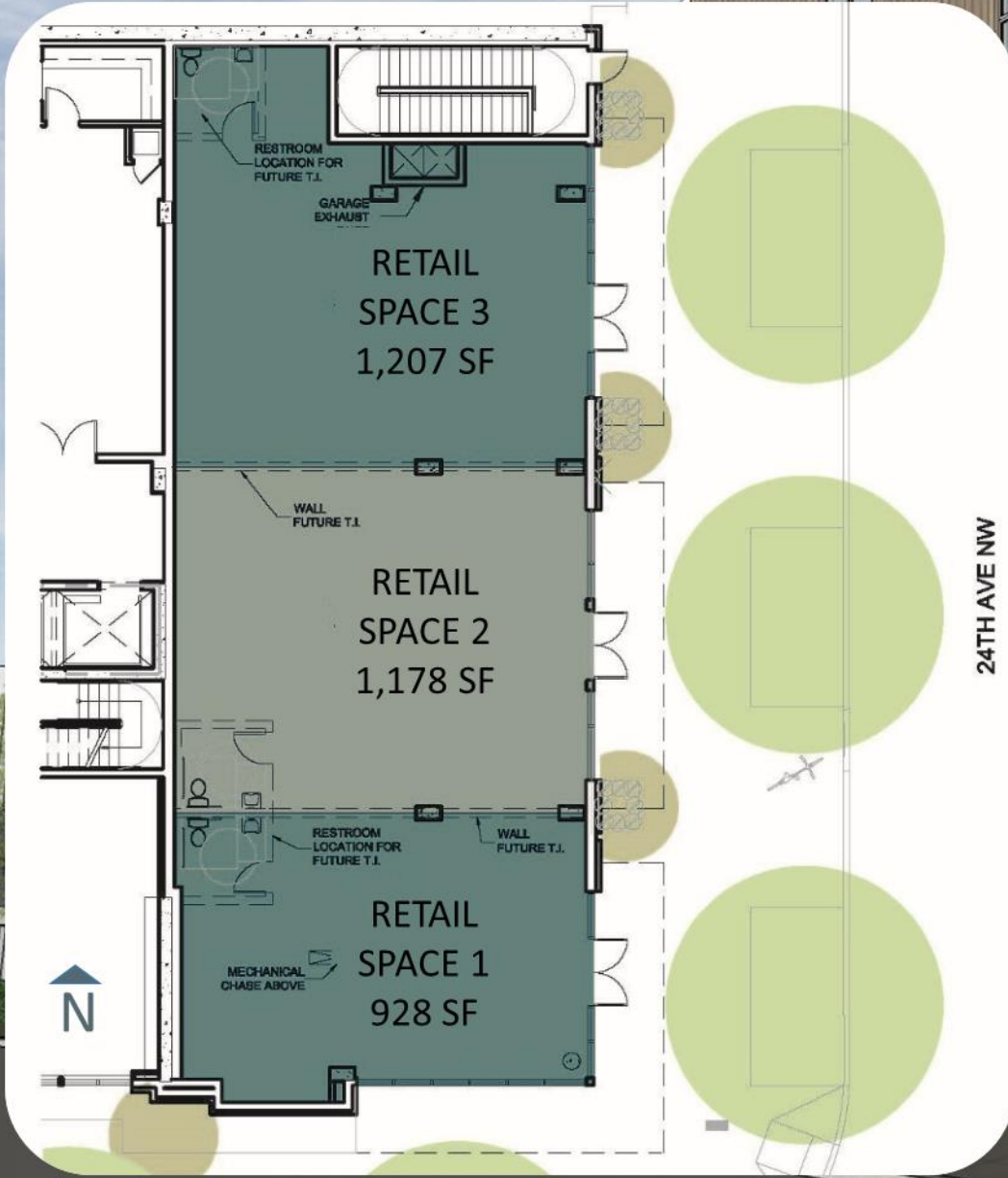
Spring 2016

**Rent:**

\$30+NNN



DEMOGRAPHICS	.5 Mile	1 Mile
Population	10,170	27,794
Workplace Population	8,346	18,958
Households	6,171	14,724
Average Household Income	\$81,273	\$91,007
Education (4+ Years)	63.40%	63.75%



24TH AVE NW

