

FOR SALE/LEASE | OFFICE

1680 Mediterranean Sycamore, IL > \$115 PSF Sale

LEASE
\$12 PSF NNN



Property Features

Suite #103 > 1,843 sft, Suite #104 > 1,843 SFT available, can be combined

Front & Rear Entrances and Parking

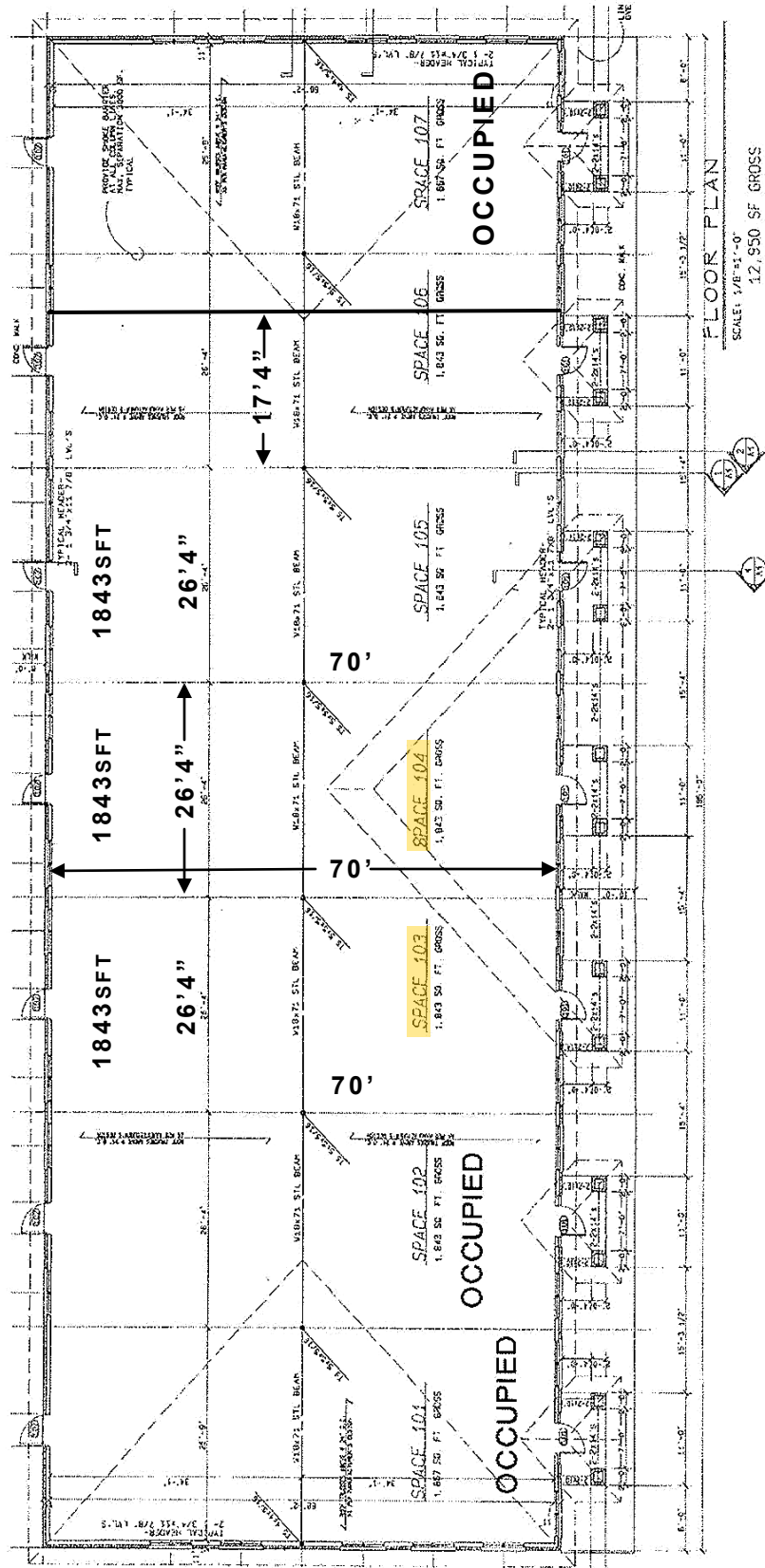
Low Maintenance Brick Construction

Monument Signage - 72 Parking Spaces

Units are available as 1 3,686 SFT contiguous unit, or as separate units 1,843 SFT each

Raw Space - TI negotiable with longer lease term

BETHANY BUSINESS CAMPUS
 Mediterranean Drive - Sycamore, IL 60178



FLOOR PLAN
 SCALE: 1/8"=1'-0"
 12,950 SF GROSS

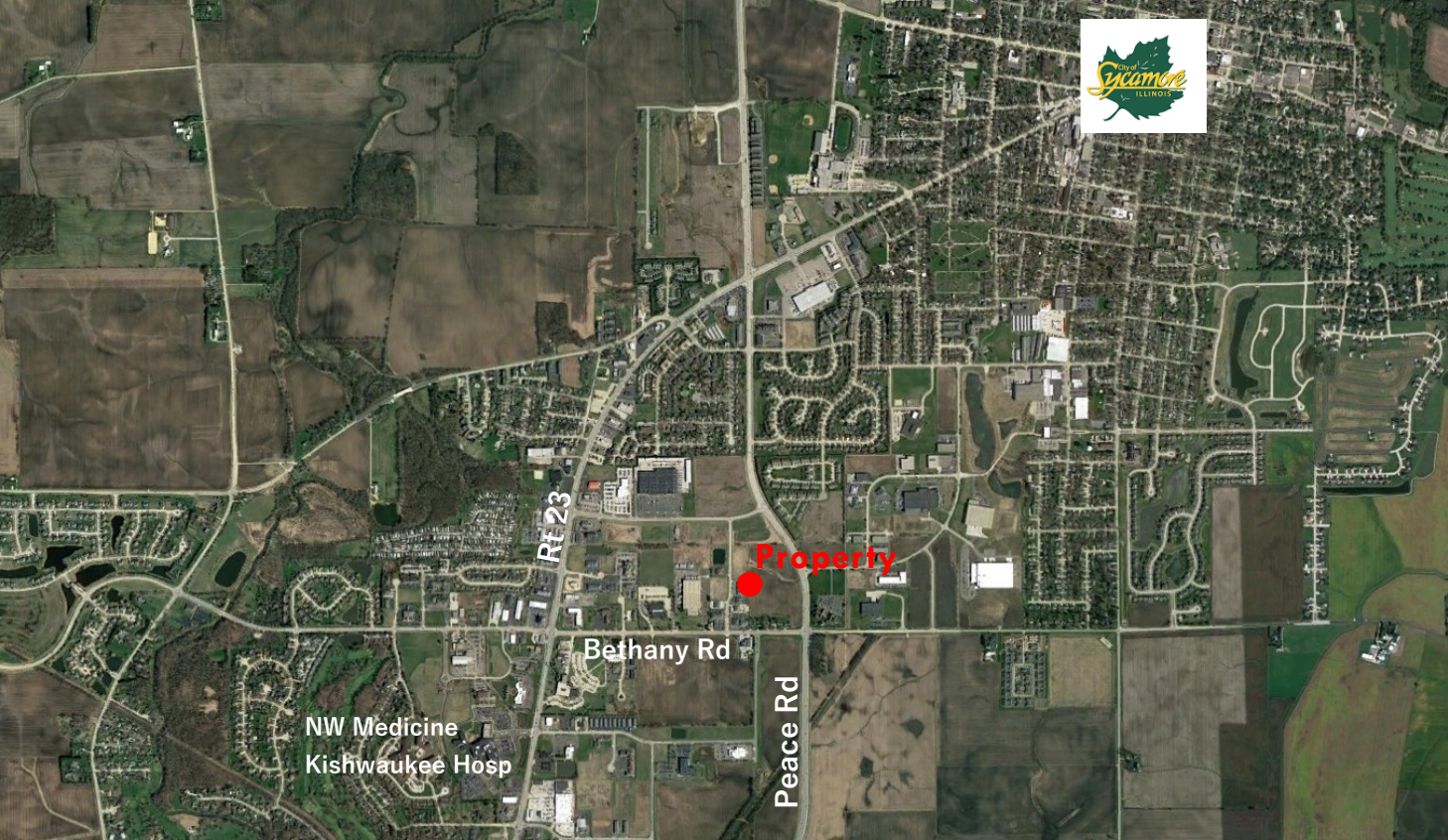


Denise Weinmann, CCIM, SIOR
 dweinmann@rvgcommercial.com
 815-739-9382 Cell / 815-754-4000 Off

Mark Sawyer, Broker
 msawyer@rvgcommercial.com
 815-757-1650 Cell / 815-754-4000 Off

LOCATION

1680 Mediterranean
Sycamore, IL 60115



Located central to DeKalb/Sycamore
Very easy access to Peace Rd and I88
Northwestern Medical - Kishwaukee
Hospital very close

