

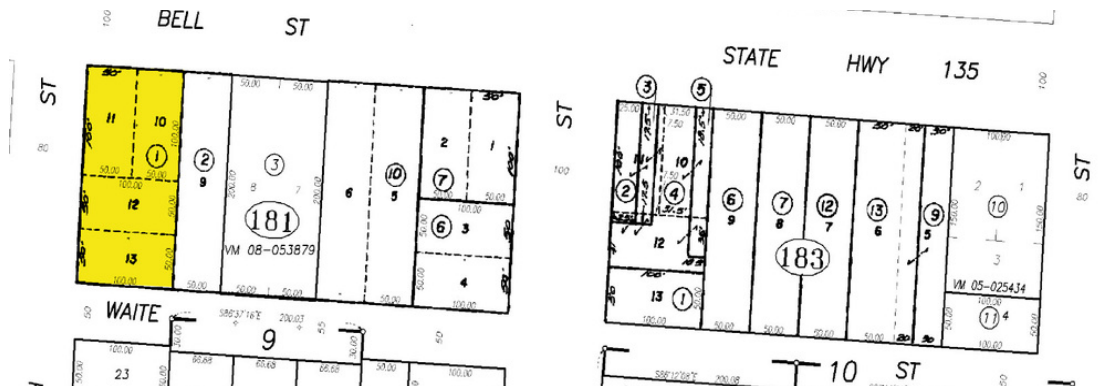
# MIXED USE DEVELOPMENT FOR SALE

## 230 ST. JOSEPH STREET

Los Alamos, CA 93440



**SALE PRICE:** \$1,400,000  
**COUNTY:** Santa Barbara  
**ZONING:** CM-LA  
**PARCEL:** 101-181-001  
**LOT ACRES:** 0.46 ac.  
**LOT SF:** 20,037 SF



### PROPERTY OVERVIEW

This beautifully designed project is fully approved for mixed use development. The project includes four 2-story, 3 bedroom, 2 1/2 bath apartments totaling approximately 7,007 SF, with an additional 5,147 SF of ground floor commercial space located on a prime corner along Bell Street in Los Alamos. All zoning approvals have been received and a full set of construction drawings have been prepared and are ready for submittal to the Building Department for building permits.

Tom Davidson  
 tdavidson@lee-associates.com  
 D 805.588.7777  
 CalDRE #00595846

All information furnished regarding property for sale, rental or financing is from sources deemed reliable, but no warranty or representation is made to the accuracy thereof and same is submitted to errors, omissions, change of price, rental or other conditions prior to sale, lease or financing or withdrawal without notice. No liability of any kind is to be imposed on the broker herein.



**MIXED USE DEVELOPMENT FOR SALE**  
**230 ST. JOSEPH STREET**  
Los Alamos, CA 93440

**LEE & ASSOCIATES**  
COMMERCIAL REAL ESTATE SERVICES



Tom Davidson  
tdavidson@lee-associates.com  
D 805.588.7777  
CalDRE #00595846

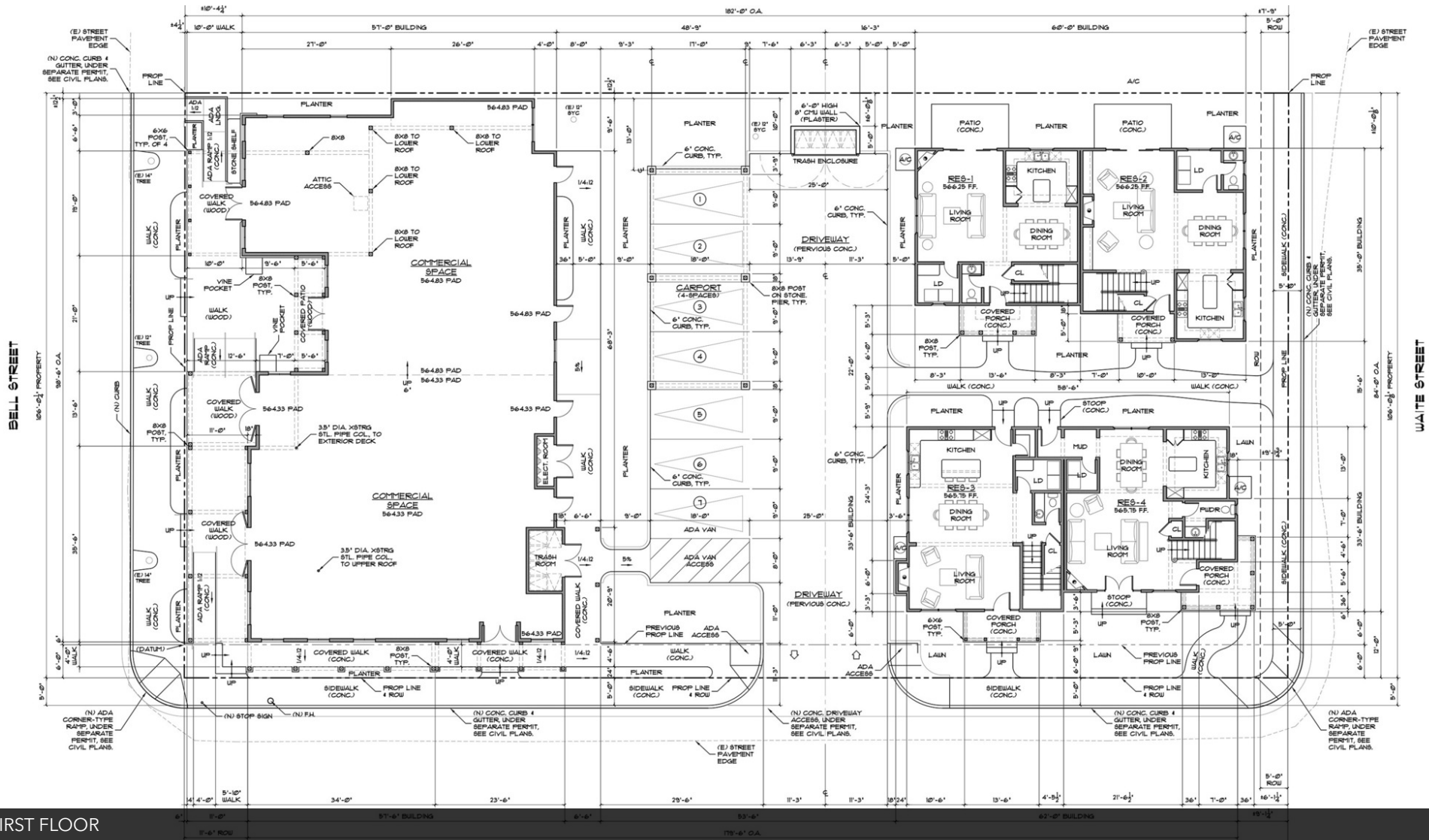
All information furnished regarding property for sale, rental or financing is from sources deemed reliable, but no warranty or representation is made to the accuracy thereof and same is submitted to errors, omissions, change of price, rental or other conditions prior to sale, lease or financing or withdrawal without notice.  
No liability of any kind is to be imposed on the broker herein.



# MIXED USE DEVELOPMENT FOR SALE

## 230 ST. JOSEPH STREET

Los Alamos, CA 93440



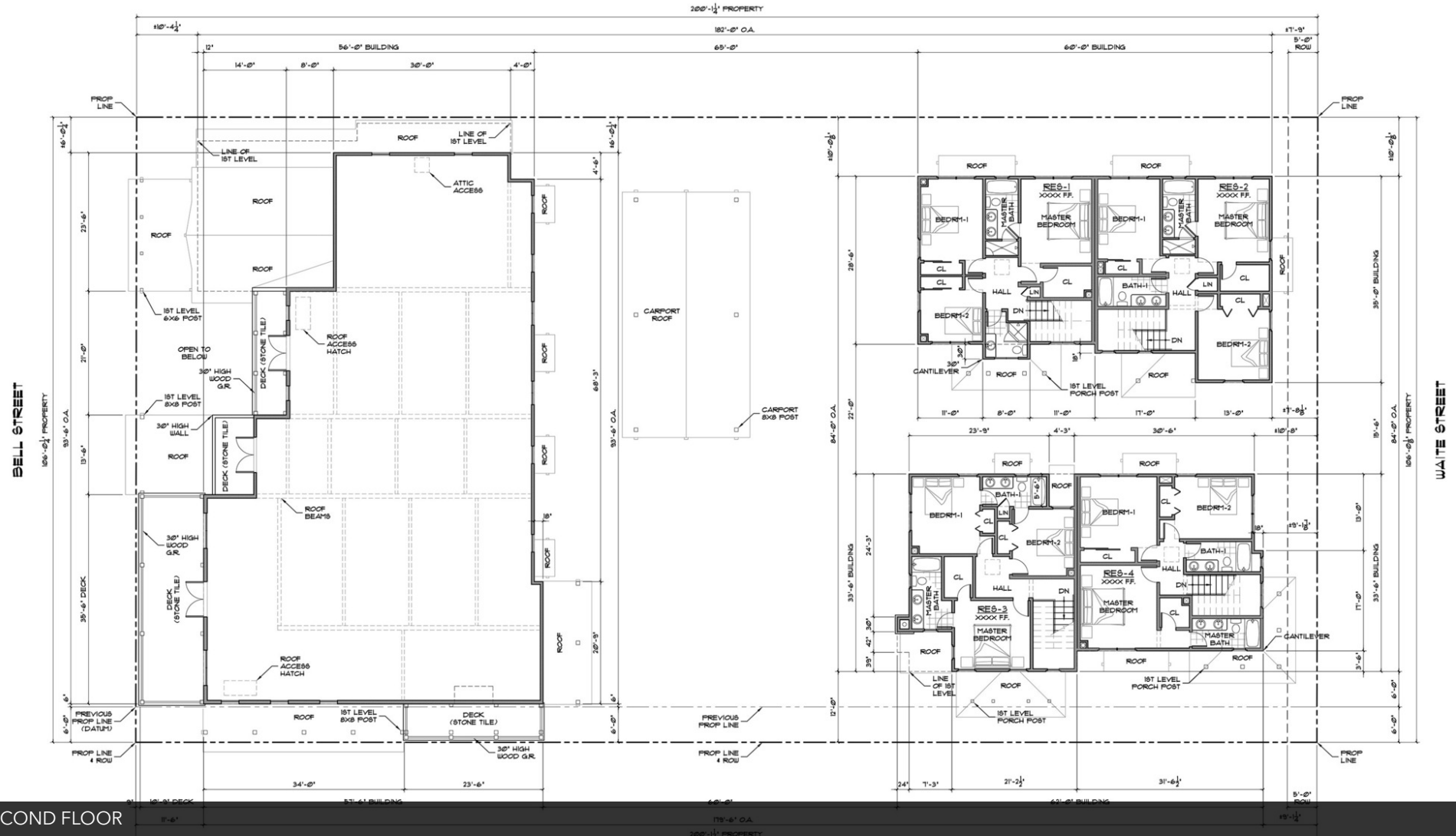
Tom Davidson  
tdavidson@lee-associates.com  
D 805.588.7777  
CalDRE #00595846

All information furnished regarding property for sale, rental or financing is from sources deemed reliable, but no warranty or representation is made to the accuracy thereof and same is submitted to errors, omissions, change of price, rental or other conditions prior to sale, lease or financing or withdrawal without notice.  
No liability of any kind is to be imposed on the broker herein.

# MIXED USE DEVELOPMENT FOR SALE

## 230 ST. JOSEPH STREET

Los Alamos, CA 93440



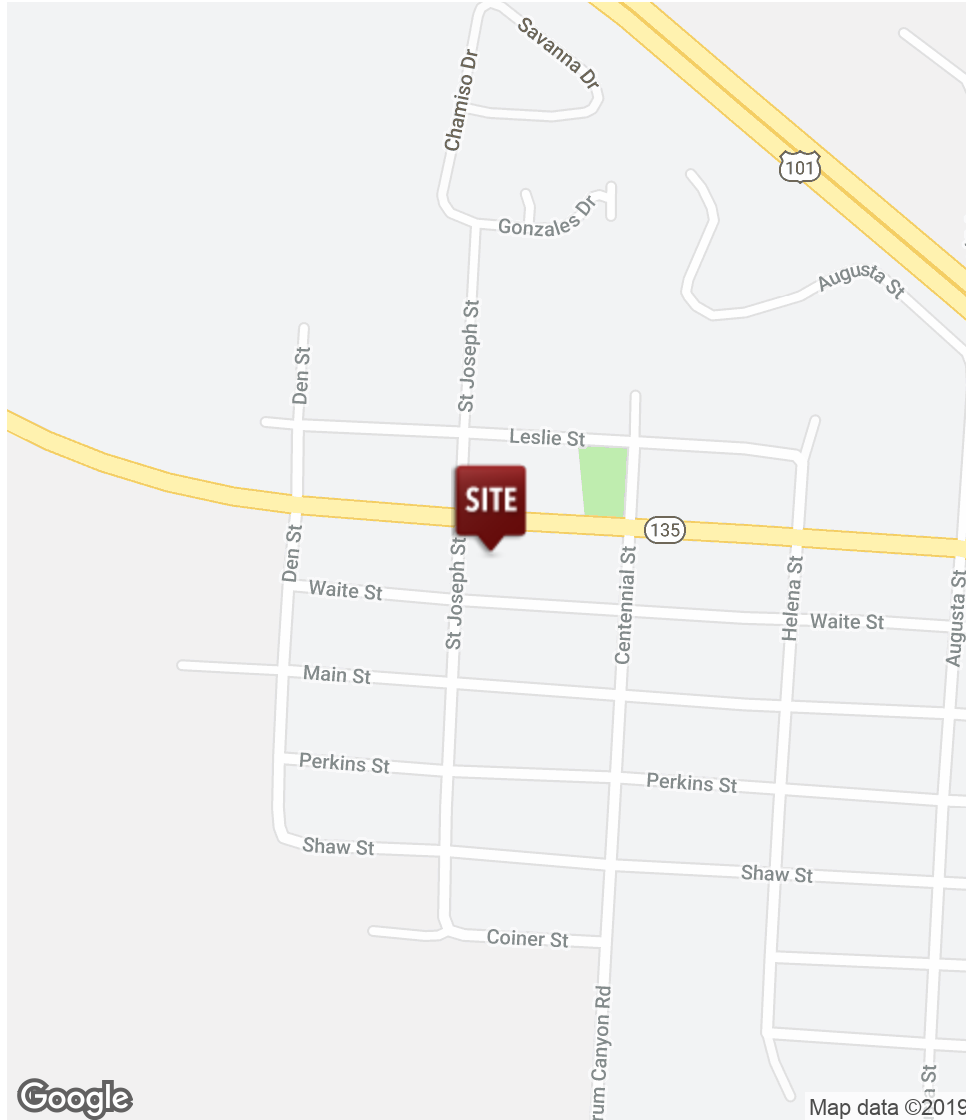
Tom Davidson  
tdavidson@lee-associates.com  
D 805.588.7777  
CalDRE #00595846

All information furnished regarding property for sale, rental or financing is from sources deemed reliable, but no warranty or representation is made to the accuracy thereof and same is submitted to errors, omissions, change of price, rental or other conditions prior to sale, lease or financing or withdrawal without notice.  
No liability of any kind is to be imposed on the broker herein.

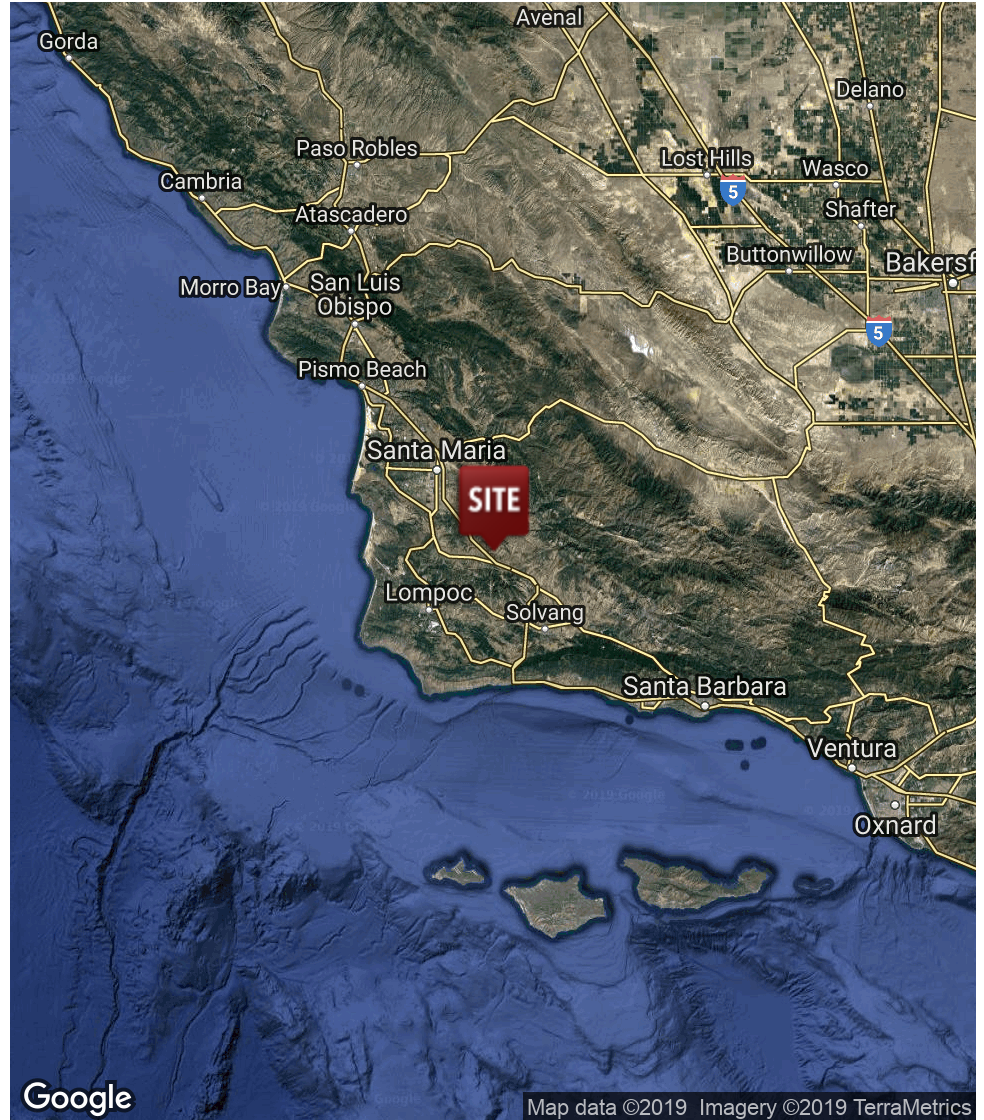
# MIXED USE DEVELOPMENT FOR SALE

## 230 ST. JOSEPH STREET

Los Alamos, CA 93440



Tom Davidson  
tdavidson@lee-associates.com  
D 805.588.7777  
CalDRE #00595846



All information furnished regarding property for sale, rental or financing is from sources deemed reliable, but no warranty or representation is made to the accuracy thereof and same is submitted to errors, omissions, change of price, rental or other conditions prior to sale, lease or financing or withdrawal without notice.  
No liability of any kind is to be imposed on the broker herein.