



# LAKE LORRAINE

## INTERSTATE 29 FRONTAGE LOT

LAST INTERSTATE 29 FRONTAGE!



2750 S. Westlake Drive  
Sioux Falls, SD 57106



size

2.639 acres



price

\$19.50 per square foot



traffic

Interstate 29:  
53,525 cars per day



zoning

PUD - Commercial



location

Prime location along  
Interstate 29 between  
41st Street & 26th  
Street.



co-tenancy

Hobby Lobby, HomeGoods,  
Marshalls, DSW, Ross,  
Carter's, Lowe's, HyVee,  
Aloft Hotel, TCI, Grand  
Living, CarsForSale, Sioux  
Falls Ford

Information deemed reliable but not guaranteed.



2571 South Westlake Drive #100  
Sioux Falls, South Dakota 57106  
VBClick.com | 605.361.8211



605.376.0127  
Ryan@VBClick.com





Great Western Bank

THE COUNTRY CLUB OF SIOUX FALLS

PAPA JOHN'S

TownePlace SUITES Marriott

West 26th Street

verizon  
Great LIFE  
HyVee

SIOUX FALLS  
Ford LINCOLN

INTERSTATE 29

Avera

LOWE'S

Carino's ITALIAN

carter's

OSH KOSH B'gosh

CINEMARK

CLUBHOUSE HOTEL & SUITES

SandBar AND GRILL

HYATT PLACE

ROSS DRESS FOR LESS

DSW DESIGNER SHOE WAREHOUSE

Cracker Barrel

SMALLCAKES A CAKERY

KIRKLAND'S

OUTBACK STEAKHOUSE

bp

Louise Avenue

carsforsale

HomeGoods

Hampton Inn & Suites

HOM FURNITURE

VanBuskirk COMPANIES

Marshalls

HOBBY LOBBY

Holiday Inn Express & Suites

THE HOME DEPOT

Edward Jones

DAVE & BUSTER'S

aloft HOTELS

STAYBRIDGE SUITES

Culver's

THE SHORES OF LAKE LORRAINE

lci



GRAND LIVING

BUFFALO WILD WINGS

Chevy's FRESH MEX

MENARDS

Sam's CLUB

Walmart

Holiday

IHOP RESTAURANT

Super 8

McDonald's

chili's

BARNES & NOBLE

INTERSTATE 29

West 41st Street

Perkins RESTAURANT & BAKERY

LAQUINTA INNS & SUITES

PANDA EXPRESS

THE EMPIRE MALL A SIMON MALL

Wendy's

JCP

macy's

DICK'S SPORTING GOODS

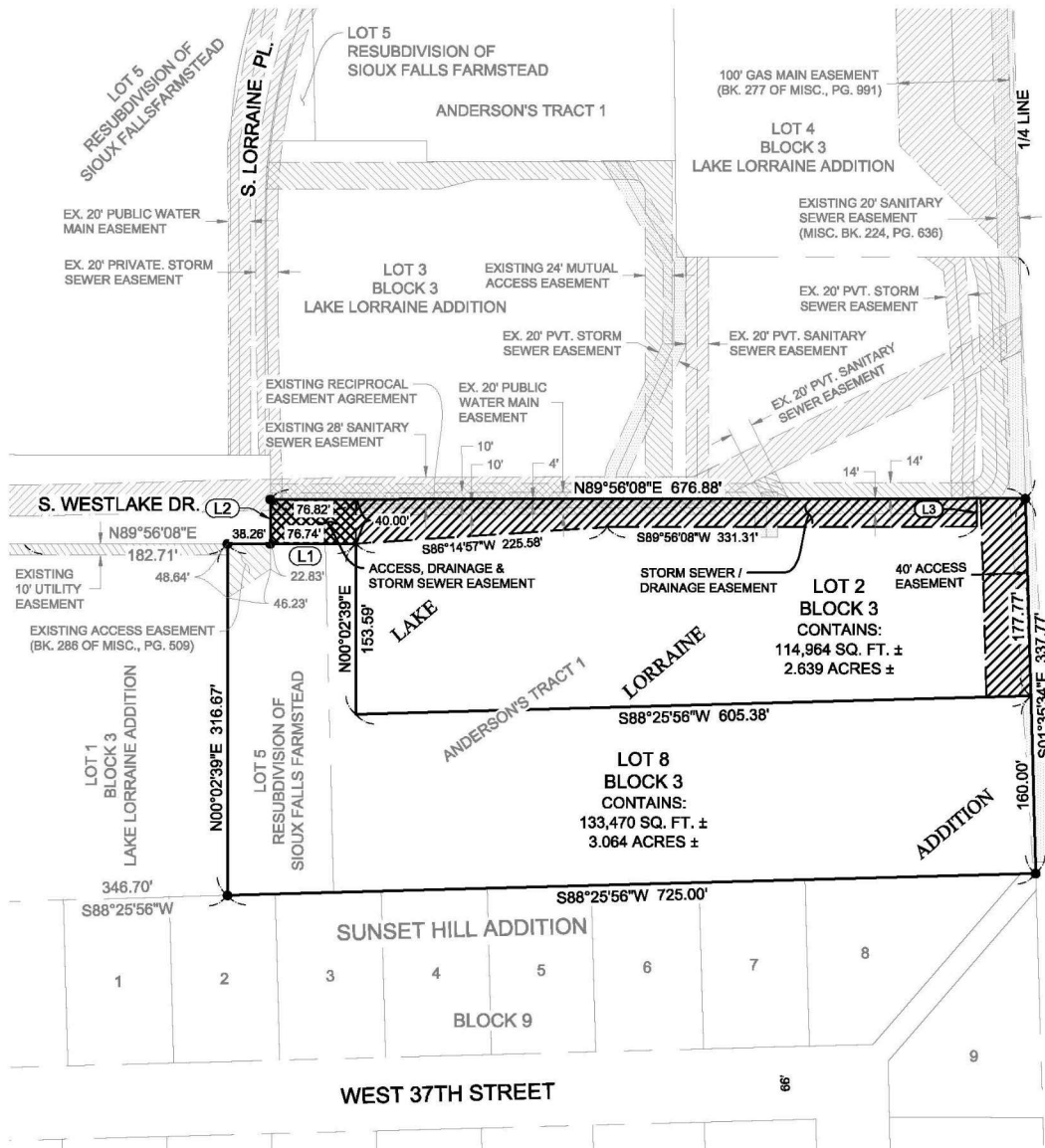
gordmans something unexpected



# PARCEL MAP



LOT 2 & 8, BLOCK 3, LAKE LORRAINE ADDITION TO THE CITY OF SIOUX FALLS,  
MINNEHAHA COUNTY, SOUTH DAKOTA



INTERSTATE 29

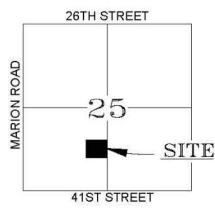
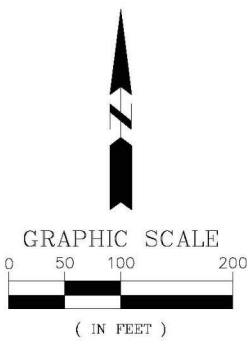
LINE TABLE		
Line #	Bearing	Distance
L1	N89°56'08"E	115.00'
L2	N0°03'52"W	40.00'
L3	S0°03'52"E	25.50'

Notes:  
The bearing system for this plat is based on the UTM Zone 14 North.

This plat was prepared without the benefit of a title commitment.

Legend

- - Denotes 5/8 inch by 18 inch rebar set and marked by License No. 6250
- - Denotes found monument
- (R) - Record Distance
- (M) - Measured Distance



VICINITY MAP  
SECTION 25-101-50

Total Area Surveyed:  
5.703 Acres±



PLAT