

PRICE CALIFORNIA XI

805 South 3600 West, Salt Lake City, Utah 84104



CONCEPTUAL

DELIVERY Q1 2019

FOR LEASE

PROPERTY FEATURES

- 100,085 Total SF
- Office Build to Suit
- 25 Dock High Doors
 - 10 Fully Equipped
- 5 Ground Level Doors
- 28' Clear Height
- Power: 400 Amps / 480/277 Volt / 3 Phase / 4 Wire per Unit
- 161 Vehicular Parking Stalls
- Automatic Sprinklers Throughout - ESFR
- Potential Yard / Trailer Storage For Lease


FOR MORE
INFORMATION
CONTACT

KYLE ROBERTS, CCIM, SIOR
801.578.5525
kroberts@ngacres.com

ELI PRIEST
801.746.4746
epriest@ngacres.com

KELSIE AKIYAMA
801.578.5504
kakiyama@ngacres.com

ANOTHER QUALITY DEVELOPMENT BY
 **PRICE**
REAL ESTATE

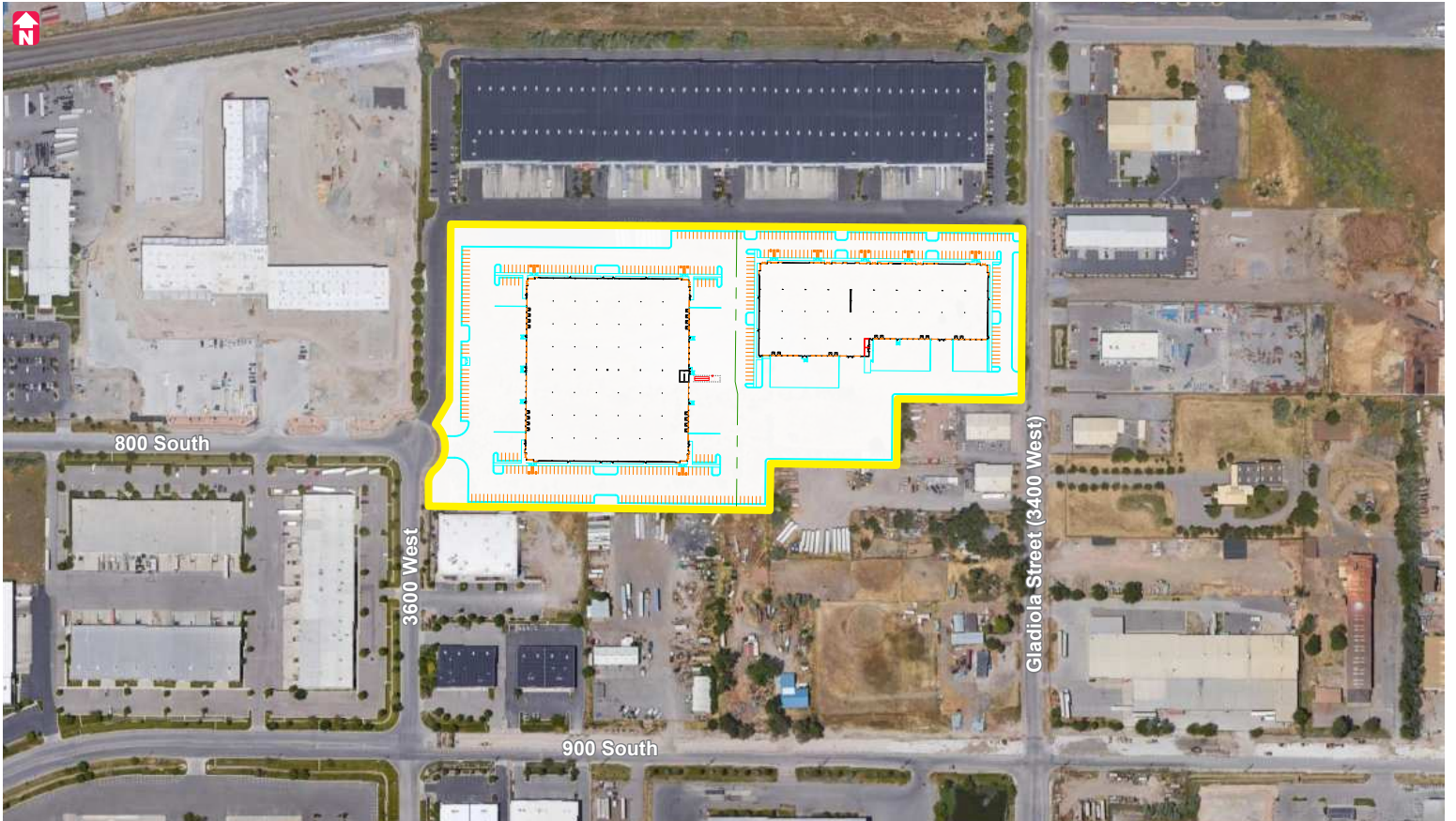
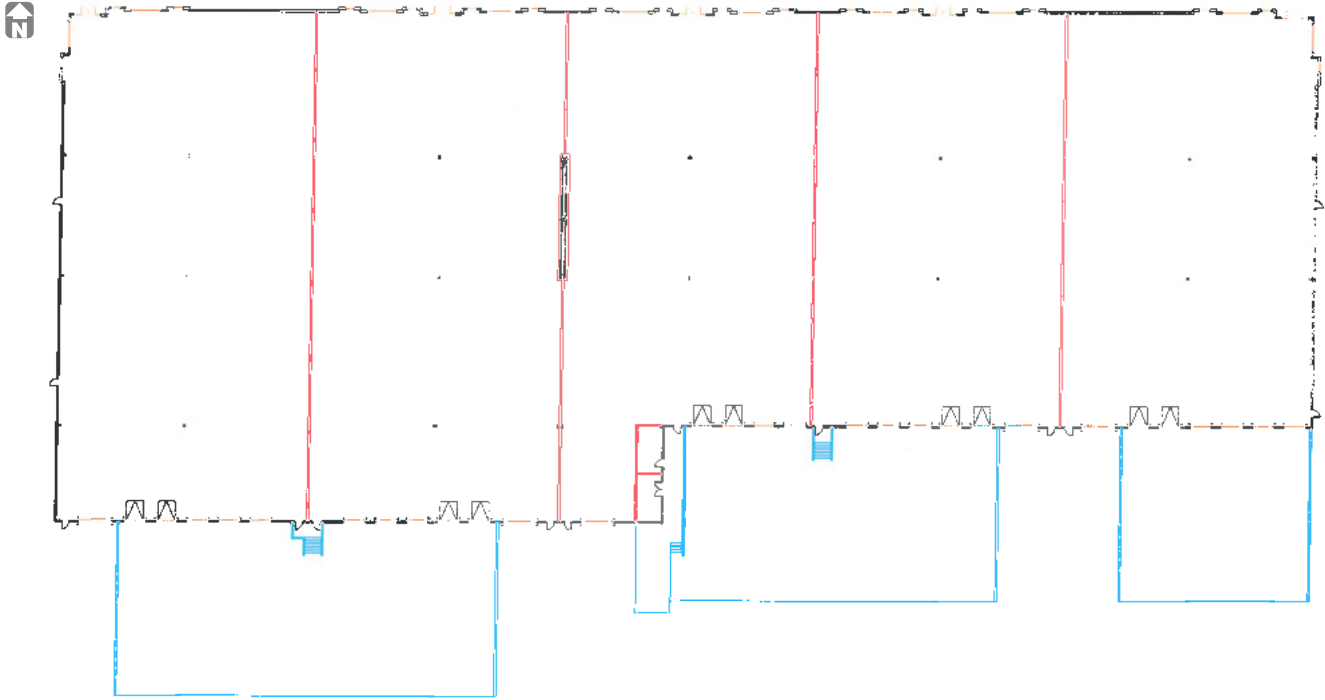
 **Newmark Grubb**
ACRES

376 East 400 South, Suite 120 | Salt Lake City, Utah 84111 | 801.578.5555 | www.ngacres.com

This document has been prepared by Newmark Grubb ACRES for advertising and general information purposes only. While the information contained herein has been obtained from what are believed to be reliable sources, the same has not been verified for accuracy or completeness. Newmark Grubb ACRES accepts no responsibility or liability for the information contained in this document. Any interested party should conduct an independent investigation to verify the information contained herein.

PRICE CALIFORNIA XI

805 South 3600 West, Salt Lake City, Utah 84104



PRICE CALIFORNIA XI

805 South 3600 West, Salt Lake City, Utah 84104

