



**COLDWELL  
BANKER  
COMMERCIAL**

Las Colinas



## VACANT LAND FOR LEASE

### FOR LEASE

8600 President PI NE  
Albuquerque, NM 87113

**Coldwell Banker Commercial**  
Las Colinas

**Carrie Mellenbruch**  
**Senior Associate Broker**  
505-563-4651 Office  
CarrieM@LCRealty.com

4801 Lang Ave NE, Suite 100, Albuquerque, NM 87109

© 2015 Coldwell Banker Real Estate LLC, dba Coldwell Banker Commercial Affiliates. All Rights Reserved. Coldwell Banker Real Estate LLC, dba Coldwell Banker Commercial Affiliates fully supports the principles of the Equal Opportunity Act. Each Office is Independently Owned and Operated. Coldwell Banker Commercial and the Coldwell Banker Commercial Logo are registered service marks owned by Coldwell Banker Real Estate LLC, dba Coldwell Banker Commercial Affiliates. The information above has been obtained from sources deemed reliable. While we do not doubt the accuracy, we have not verified it and make no guarantee, warranty or representation about it. It is your responsibility to independently confirm its accuracy and completeness. Any projections, opinions, assumptions or estimates used are for example only and do not represent the current or future performance of the property. The value of this transaction to you depends on tax and other factors which should be evaluated by your tax, financial and legal advisors. You and your advisors should conduct a careful, independent investigation of the property to determine to your satisfaction the suitability of the property for your needs.

## THE PROPERTY

Vacant Land for Lease  
8600 President PI NE  
Albuquerque, NM 87113

## PROPERTY DETAILS

- Great location close to I-25
- Zoning: SU-2; M-1 Permissible
- Great location for storing materials, trucks, and/or supplies

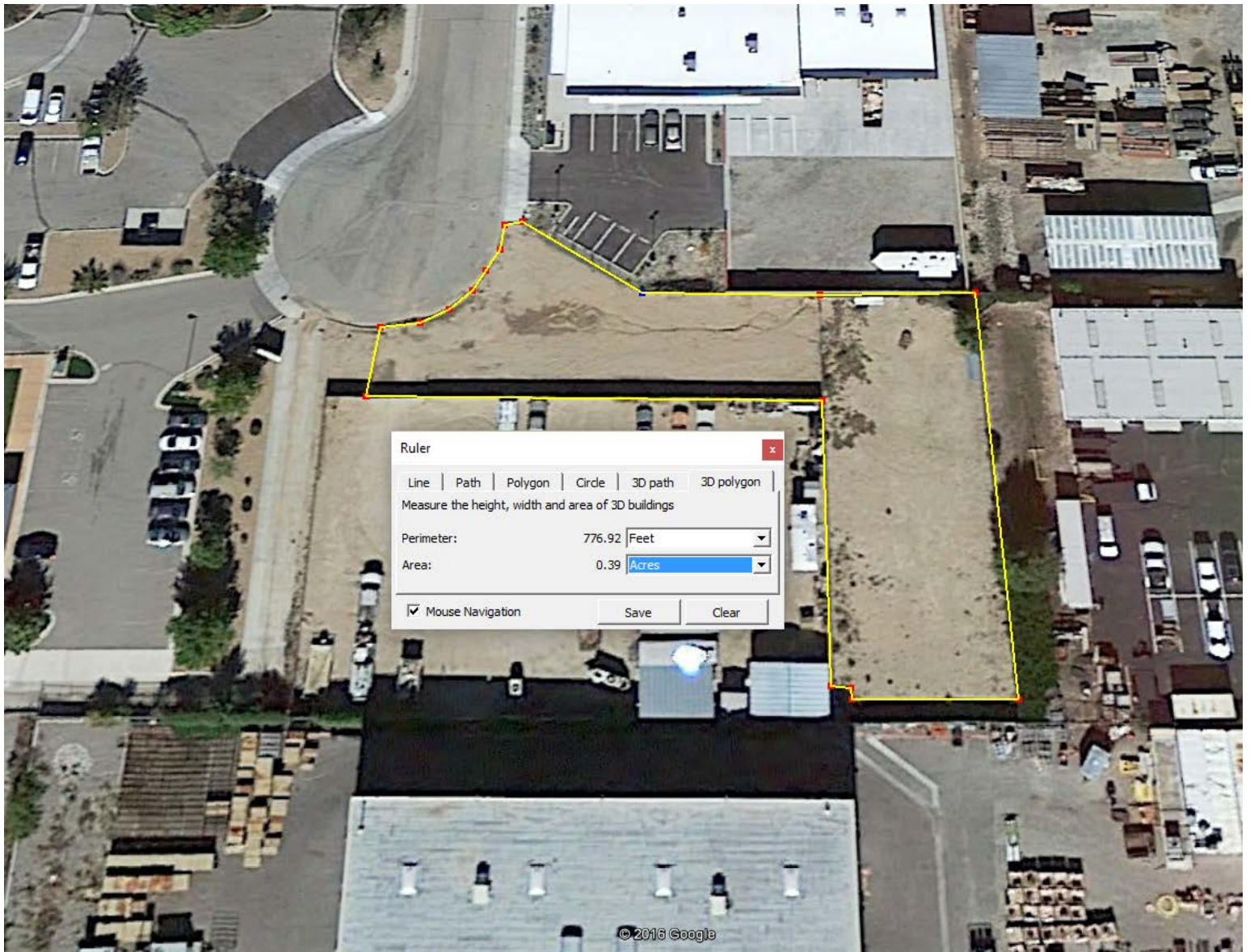
## PROPERTY SPECIFICATIONS

<b>Property Type:</b>	Vacant Land
<b>Zoning:</b>	SU-2
<b>Total Land:</b>	0.21 or 0.39 acres

## LEASE INFORMATION

<b>Lease Rate:</b>	0.21 acres for \$1,500 0.39 acres for \$2,500
<b>Lease Type:</b>	Other















SURV-TEK, Inc.

ID:5058973377

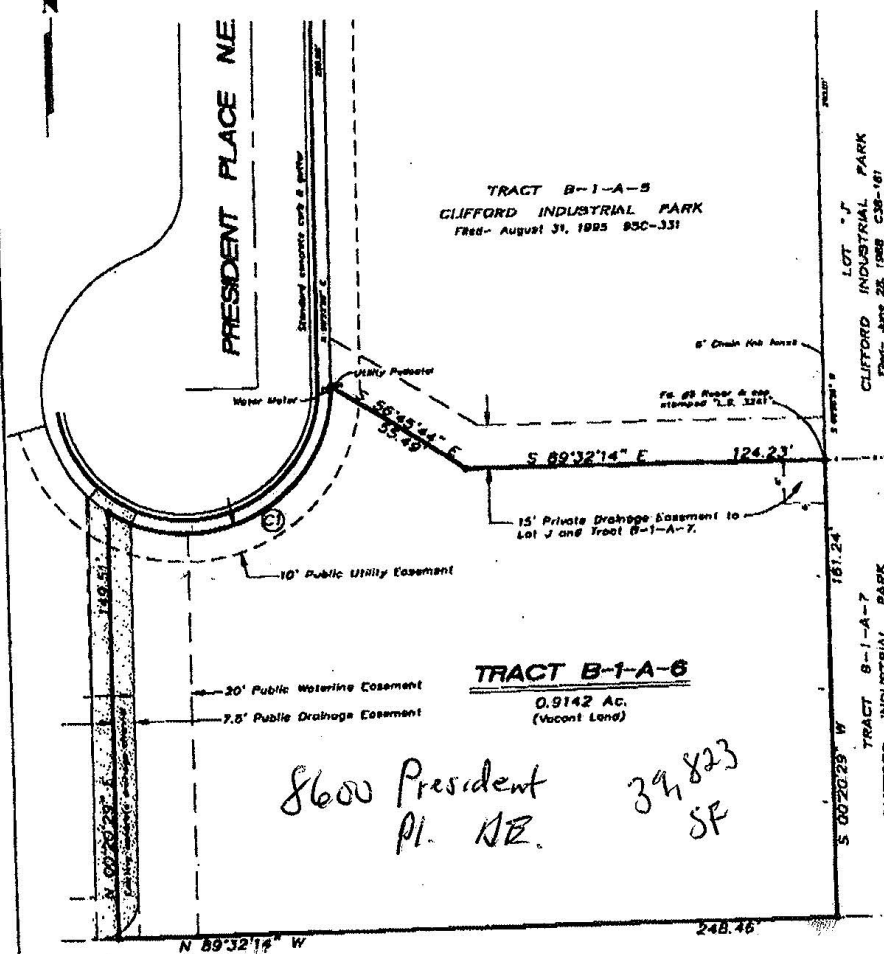
OCT 13 '95 11:10 No.003 P.03

**PLAT OF SURVEY**

*This is a boundary survey*

TRACT B-1-A-6  
Clifford Industrial Park  
City of Albuquerque  
Bernalillo County, New Mexico

Scale 1" = 40'



*TR B-1-A-5  
TRS B-1-A-1  
Have  
B-1-A-7 &  
TRS B-2-A  
&  
B-2-B-2  
1.0025/Ac  
43,629.5*



**SURV-TEK, INC.**

Sheet 2 of 2  
B-1-A-6.DWG

Consulting Surveyors  
5843 Paradise Blvd. N.W. Albuquerque, New Mexico 87114  
Phone: 505-897-3331 Fax: 505-897-3377



