

For Sale

±68.26 AC

Paschal Road

Northeast Columbia,
South Carolina

Property Features

- ±68.26 acres of land for sale in Northeast Columbia
- Located on Paschal Road near the intersection of Landford Road
- Utilities nearby: City of Columbia water and sewer services
- Zoning: RU, Richland County
- School District: Richland 2
- Sale price: \$750,000

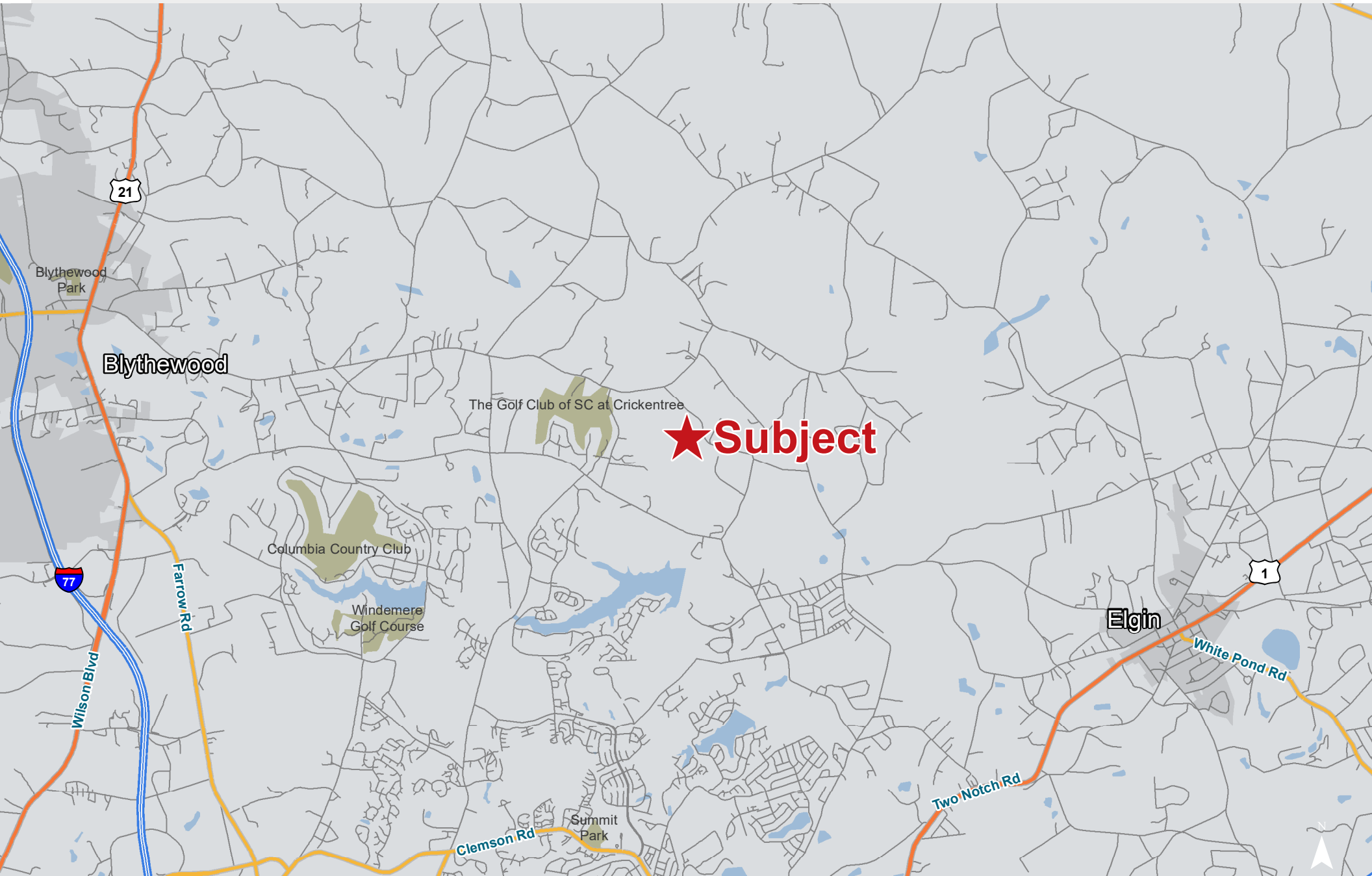
For more information:

Bobby Hathaway

+1 803 530 8485

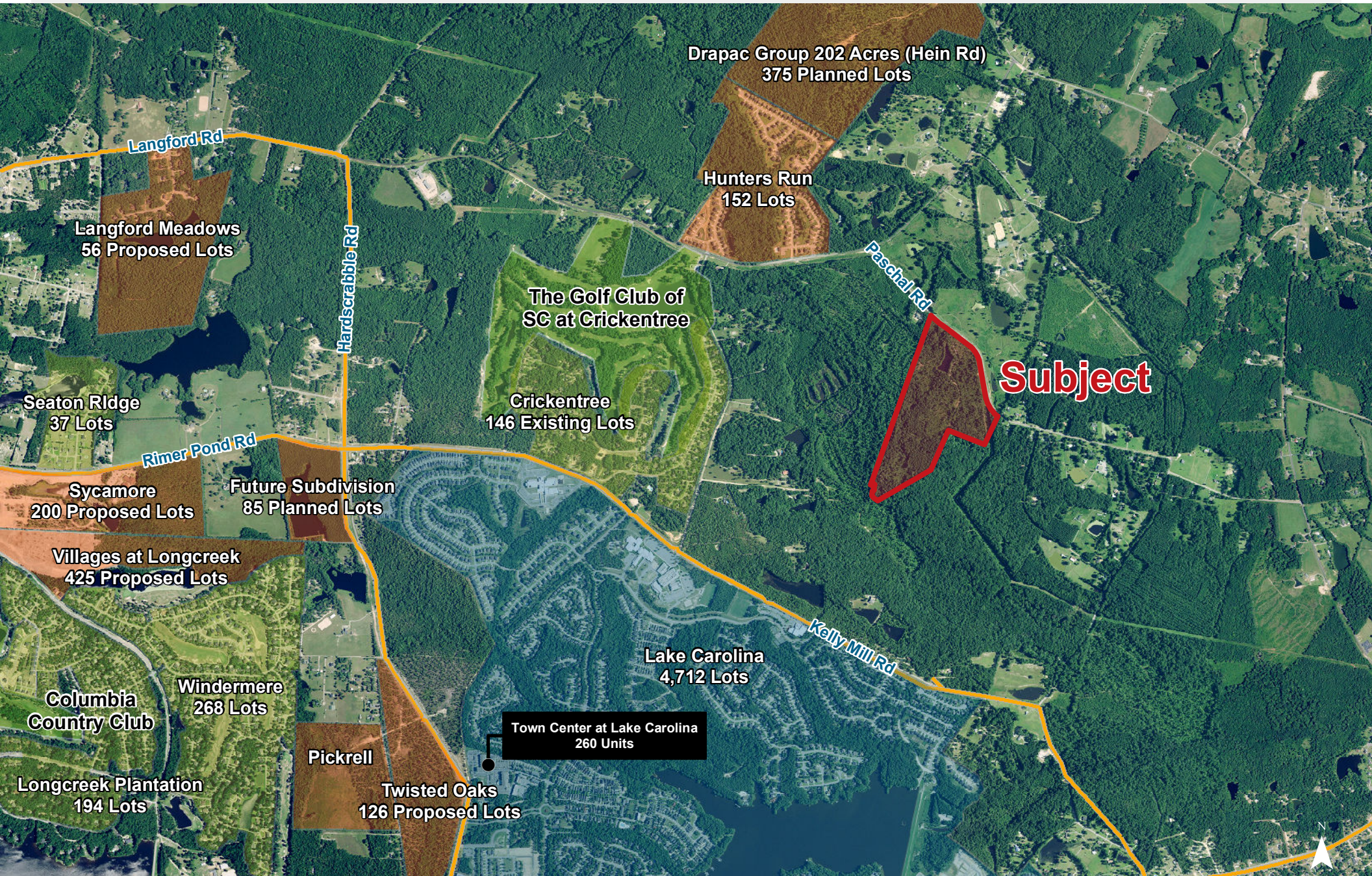
bhathaway@naicolumbia.com

Location



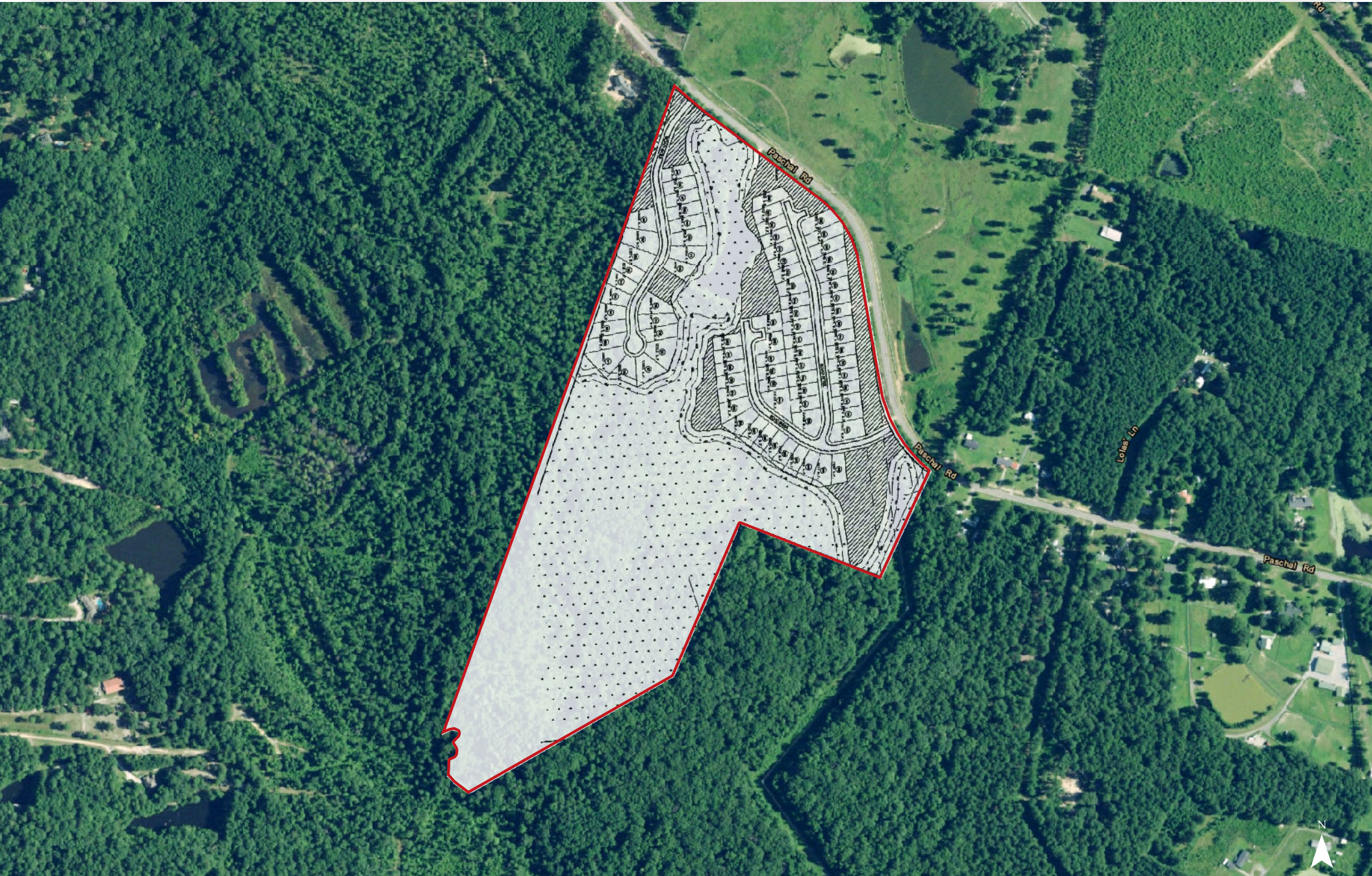
Map Updated: Tuesday, October 16, 2018. This information submitted is not guaranteed. Although obtained from reliable sources, all information should be confirmed prior to use or reliance upon the information. This document may not be reproduced in whole or in part without the express written consent of NAI Avant.

Residential Development

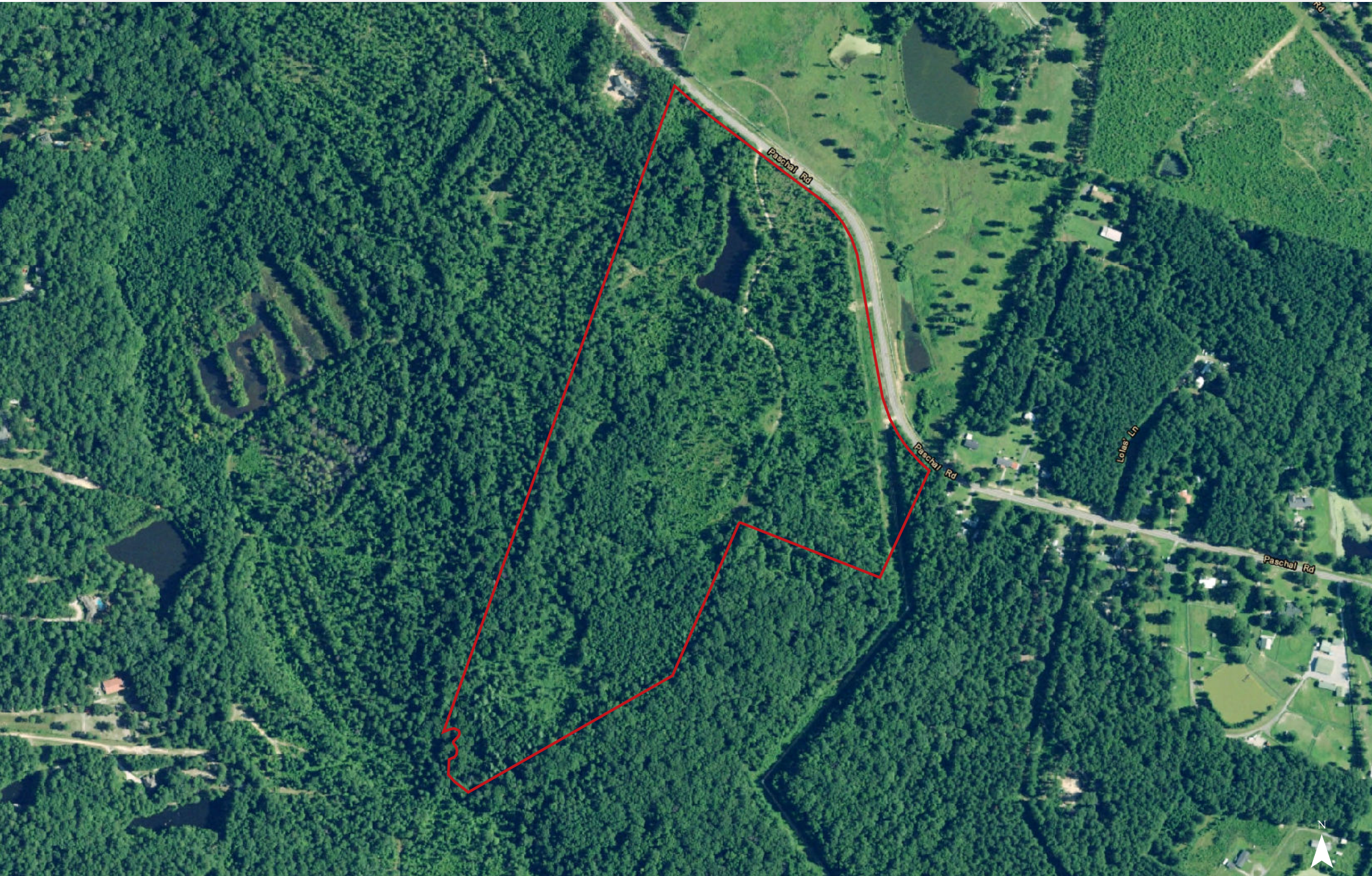


Map Updated: Tuesday, October 16, 2018. This information submitted is not guaranteed. Although obtained from reliable sources, all information should be confirmed prior to use or reliance upon the information. This document may not be reproduced in whole or in part without the express written consent of NAI Avant.

Aerial With Overlay



Map Updated: Tuesday, October 16, 2018. This information submitted is not guaranteed. Although obtained from reliable sources, all information should be confirmed prior to use or reliance upon the information. This document may not be reproduced in whole or in part without the express written consent of NAI Avant.

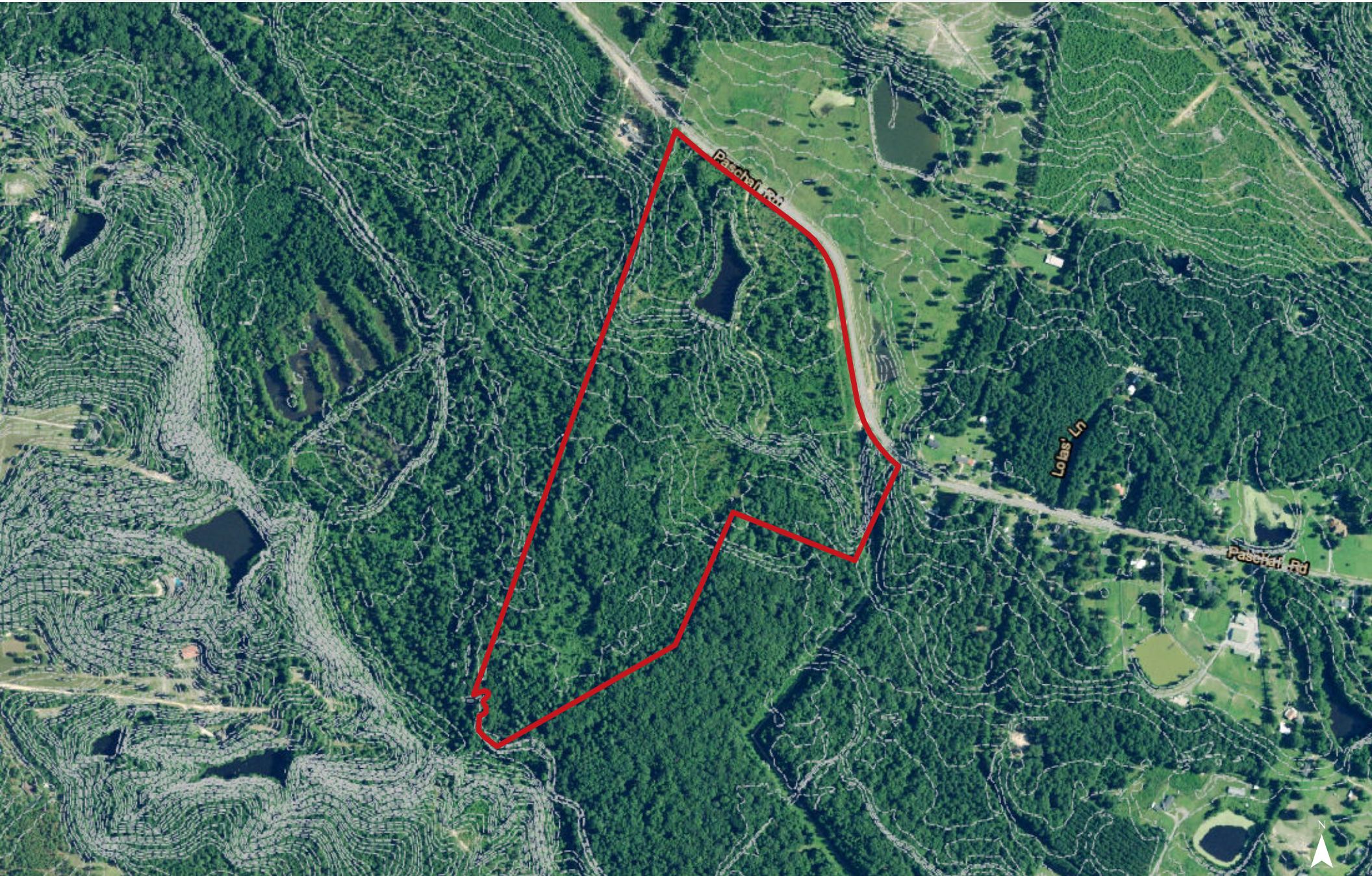


Map Updated: Tuesday, October 16, 2018. This information submitted is not guaranteed. Although obtained from reliable sources, all information should be confirmed prior to use or reliance upon the information. This document may not be reproduced in whole or in part without the express written consent of NAI Avant.



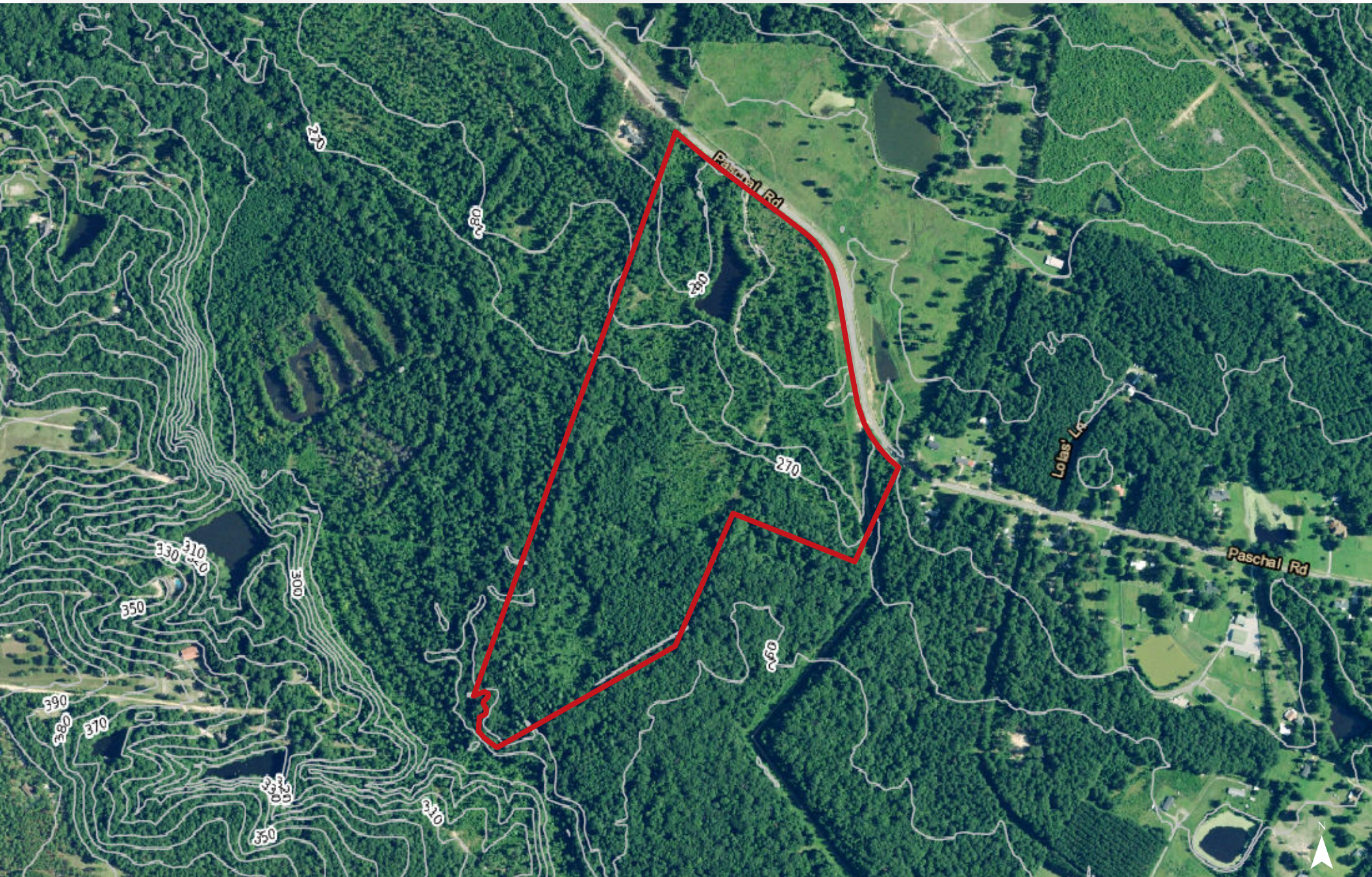
Map Updated: Tuesday, October 16, 2018. This information submitted is not guaranteed. Although obtained from reliable sources, all information should be confirmed prior to use or reliance upon the information. This document may not be reproduced in whole or in part without the express written consent of NAI Avant.

Topographical Map: 2' Contours



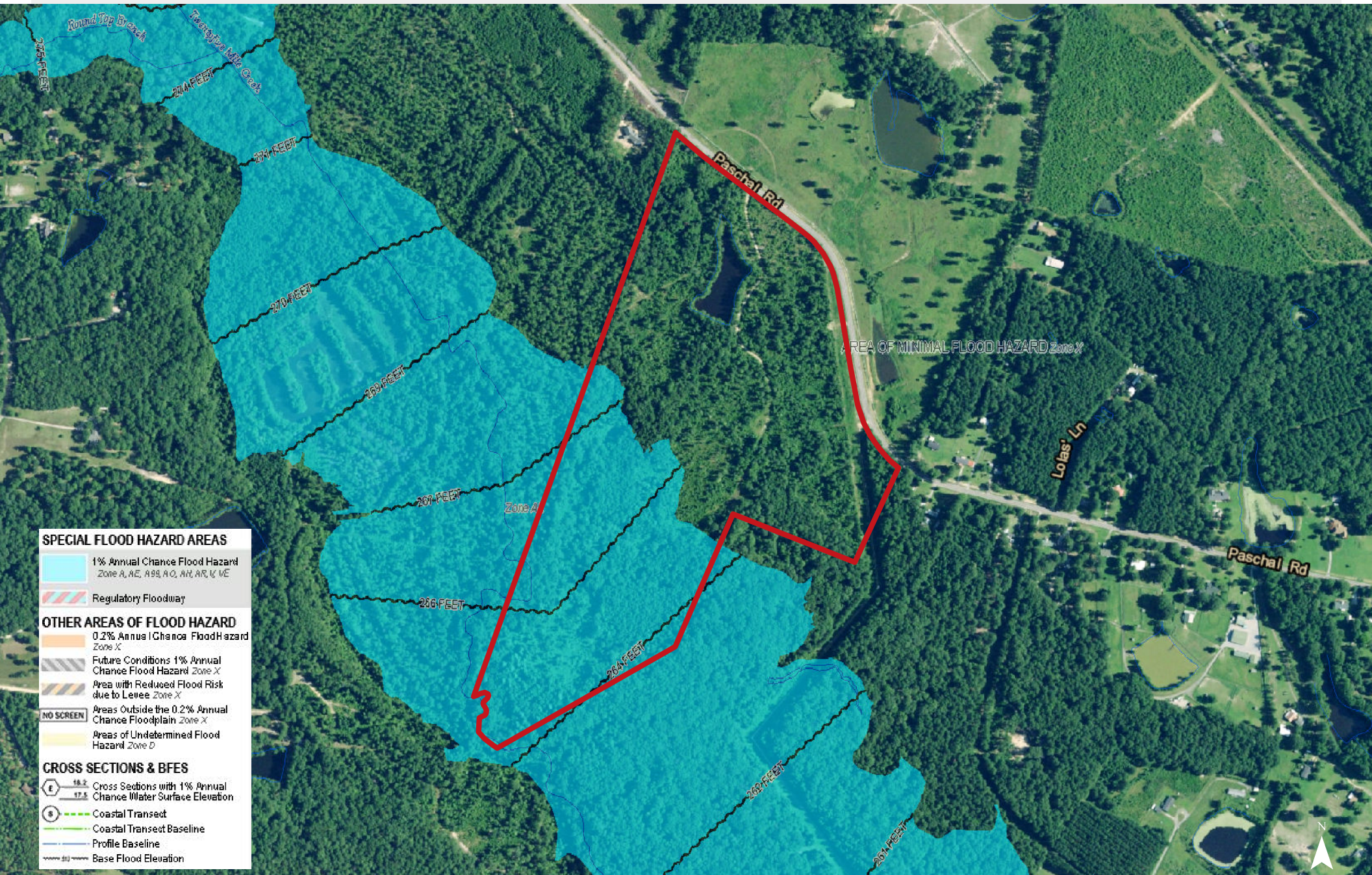
Map Updated: Tuesday, October 16, 2018. This information submitted is not guaranteed. Although obtained from reliable sources, all information should be confirmed prior to use or reliance upon the information. This document may not be reproduced in whole or in part without the express written consent of NAI Avant.

Topographical Map: 10' Contours



Map Updated: Tuesday, October 16, 2018. This information submitted is not guaranteed. Although obtained from reliable sources, all information should be confirmed prior to use or reliance upon the information. This document may not be reproduced in whole or in part without the express written consent of NAI Avant.

FEMA National Flood Hazard Layer



SPECIAL FLOOD HAZARD AREAS

- 1% Annual Chance Flood Hazard
Zone A, AE, A99, A0, AH, AR, V, VE
- Regulatory Floodway

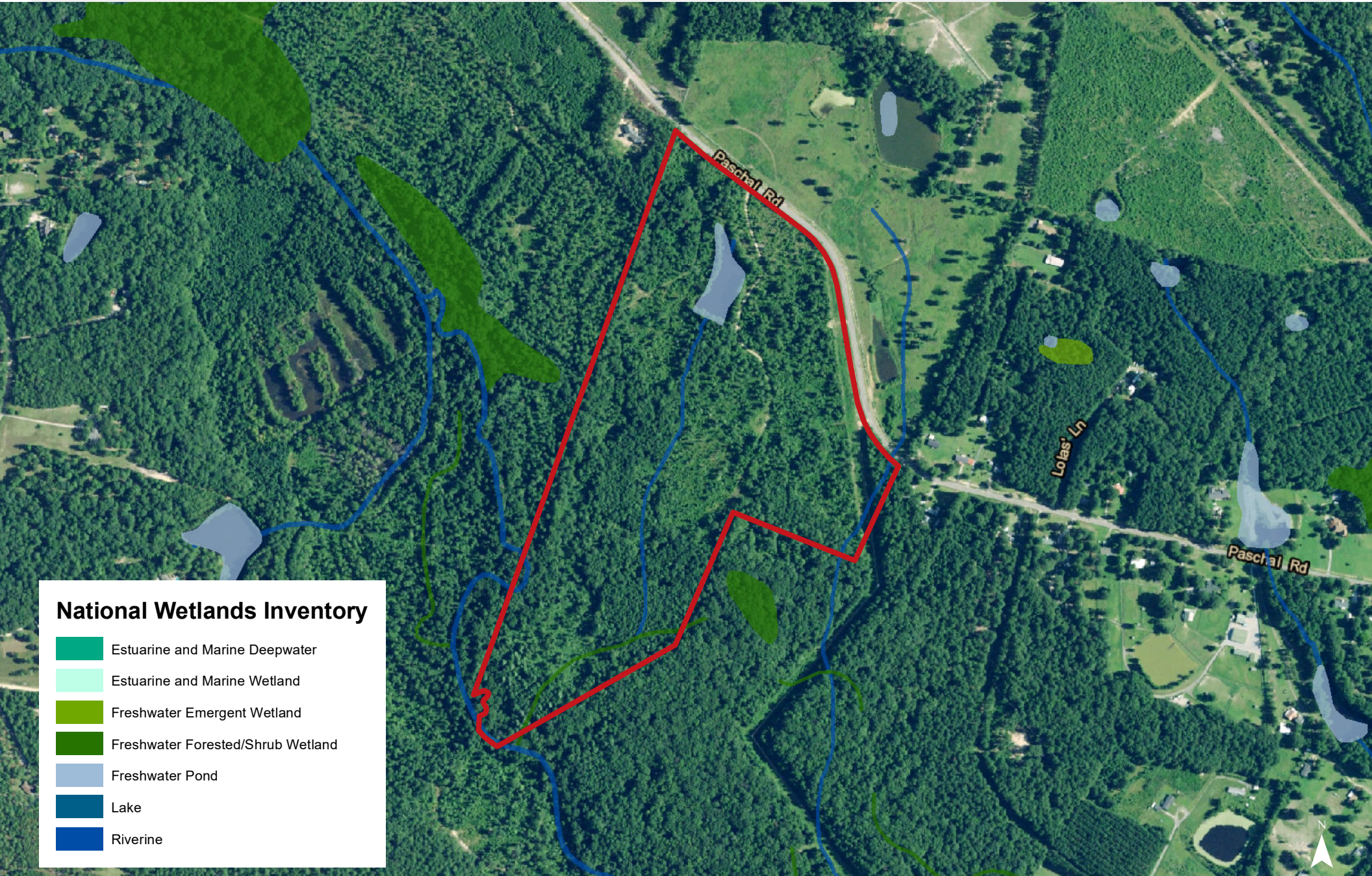
OTHER AREAS OF FLOOD HAZARD

- 0.2% Annual Chance Flood Hazard
Zone X
- Future Conditions 1% Annual
Chance Flood Hazard Zone X
- Area with Reduced Flood Risk
due to Levee Zone X
- NO SCREEN
Areas Outside the 0.2% Annual
Chance Floodplain Zone X
- Areas of Undetermined Flood
Hazard Zone D

CROSS SECTIONS & BFES

- 16.2
17.5
Cross Sections with 1% Annual
Chance Water Surface Elevation
- Coastal Transect
- Coastal Transect Baseline
- Profile Baseline
- Base Flood Elevation

Map Updated: Tuesday, October 16, 2018. This information submitted is not guaranteed. Although obtained from reliable sources, all information should be confirmed prior to use or reliance upon the information. This document may not be reproduced in whole or in part without the express written consent of NAI Avant.



Map Updated: Tuesday, October 16, 2018. This information submitted is not guaranteed. Although obtained from reliable sources, all information should be confirmed prior to use or reliance upon the information. This document may not be reproduced in whole or in part without the express written consent of NAI Avant.

Soil Survey



Map Updated: Tuesday, October 16, 2018. This information submitted is not guaranteed. Although obtained from reliable sources, all information should be confirmed prior to use or reliance upon the information. This document may not be reproduced in whole or in part without the express written consent of NAI Avant.

Map Unit Description (Brief, Generated)

Richland County, South Carolina

[Minor map unit components are excluded from this report]

Map unit: AtA - Altavista silt loam, 0 to 2 percent slopes

Component: Altavista (100%)

The Altavista component makes up 100 percent of the map unit. Slopes are 0 to 2 percent. This component is on coastal plains, stream terraces. The parent material consists of loamy marine deposits. Depth to a root restrictive layer 49 inches, bedrock, paralithic. The natural drainage class is moderately well drained. Water movement in the most restrictive layer is moderately high. Available water to a depth of 60 inches is high. Shrink-swell potential is low. This soil is not flooded. It is not ponded. A seasonal zone of water saturation is at 18 inches during January, February, March, December. Organic matter content in the surface horizon is about 0 percent. Nonirrigated land capability classification is 2w. This soil does not meet hydric criteria.

Map unit: CH - Chewacla soils

Component: Chewacla (80%)

The Chewacla component makes up 80 percent of the map unit. Slopes are 0 to 2 percent. This component is on flood plains on coastal plains. The parent material consists of loamy alluvium. Depth to a root restrictive layer is greater than 60 inches. The natural drainage class is somewhat poorly drained. Water movement in the most restrictive layer is moderately high. Available water to a depth of 60 inches is high. Shrink-swell potential is low. This soil is occasionally flooded. It is not ponded. A seasonal zone of water saturation is at 6 inches during January, February, March, April, November, December. Organic matter content in the surface horizon is about 2 percent. Nonirrigated land capability classification is 3w. This soil does not meet hydric criteria.

Map unit: Co - Congaree loam

Component: Tawcaw (85%)

The Tawcaw component makes up 85 percent of the map unit. Slopes are 0 to 2 percent. This component is on flood plains on coastal plains. The parent material consists of clayey alluvium. Depth to a root restrictive layer is greater than 60 inches. The natural drainage class is somewhat poorly drained. Water movement in the most restrictive layer is low. Available water to a depth of 60 inches is high. Shrink-swell potential is low. This soil is occasionally flooded. It is not ponded. A seasonal zone of water saturation is at 18 inches during January, February, March, April, November, December. Organic matter content in the surface horizon is about 4 percent. Nonirrigated land capability classification is 3w. This soil does not meet hydric criteria.

Map Unit Description (Brief, Generated)

Richland County, South Carolina

Map unit: NaE - Nason complex, 10 to 30 percent slopes

Component: Nason (100%)

The Nason component makes up 100 percent of the map unit. Slopes are 10 to 30 percent. This component is on hillslopes on uplands. The parent material consists of clayey residuum weathered from slate. Depth to a root restrictive layer, bedrock, paralithic, is 40 to 60 inches. The natural drainage class is well drained. Water movement in the most restrictive layer is moderately high. Available water to a depth of 60 inches is moderate. Shrink-swell potential is moderate. This soil is not flooded. It is not ponded. There is no zone of water saturation within a depth of 72 inches. Organic matter content in the surface horizon is about 2 percent. Nonirrigated land capability classification is 4e. This soil does not meet hydric criteria.

Map unit: StA - State sandy loam, 0 to 2 percent slopes

Component: Wickham (100%)

The Wickham component makes up 100 percent of the map unit. Slopes are 0 to 2 percent. This component is on coastal plains, stream terraces. The parent material consists of loamy fluviomarine deposits. Depth to a root restrictive layer is greater than 60 inches. The natural drainage class is well drained. Water movement in the most restrictive layer is moderately high. Available water to a depth of 60 inches is high. Shrink-swell potential is low. This soil is not flooded. It is not ponded. There is no zone of water saturation within a depth of 72 inches. Organic matter content in the surface horizon is about 1 percent. Nonirrigated land capability classification is 1. This soil does not meet hydric criteria.

Map unit: W - Water

Component: Water (100%)

Generated brief soil descriptions are created for major soil components. The Water is a miscellaneous area.