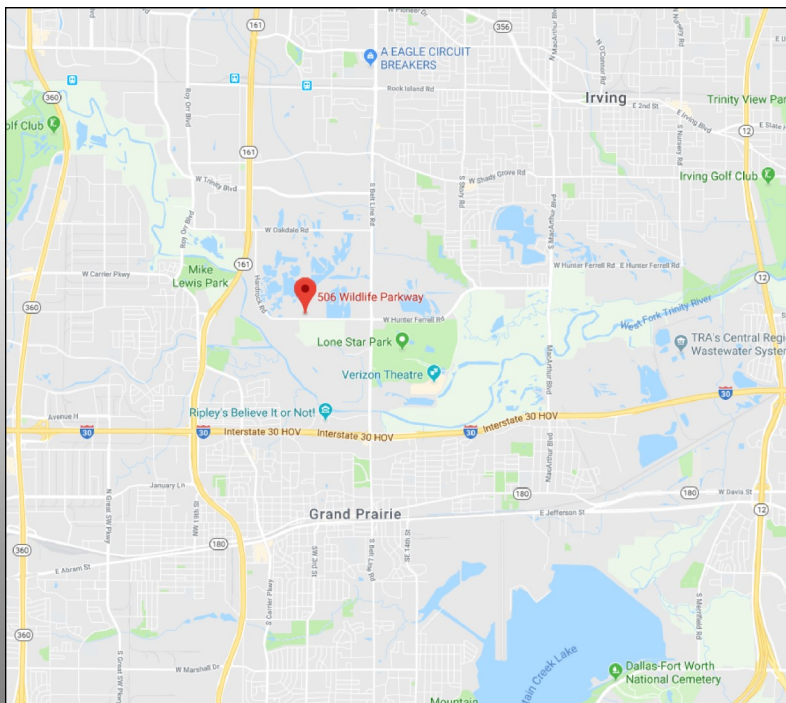
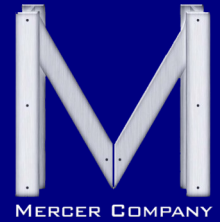


FOR LEASE: 8,696 SQUARE FEET

506 WILDLIFE PARKWAY, GRAND PRAIRIE, TX 75050

INDUSTRIAL REAL ESTATE BROKERAGE

WWW.MERCER-COMPANY.COM



## DETAILS

### AVAILABLE FOR LEASE

- ◆ TOTAL SF: 8,696
- ◆ OFFICE SF: 2,800
- ◆ LAND SIZE: 4 ACRES
- ◆ CLEAR HEIGHT: 16'-20'
- ◆ GRADE LEVEL DOORS: 4 REPAIR BAYS
- ◆ AUTO SHOP, TRAILER REPAIR BLDG & OFFICE INCLUDED
- ◆ HEAVY POWER
- ◆ YEAR OF CONSTRUCTION: 1981 & 2012

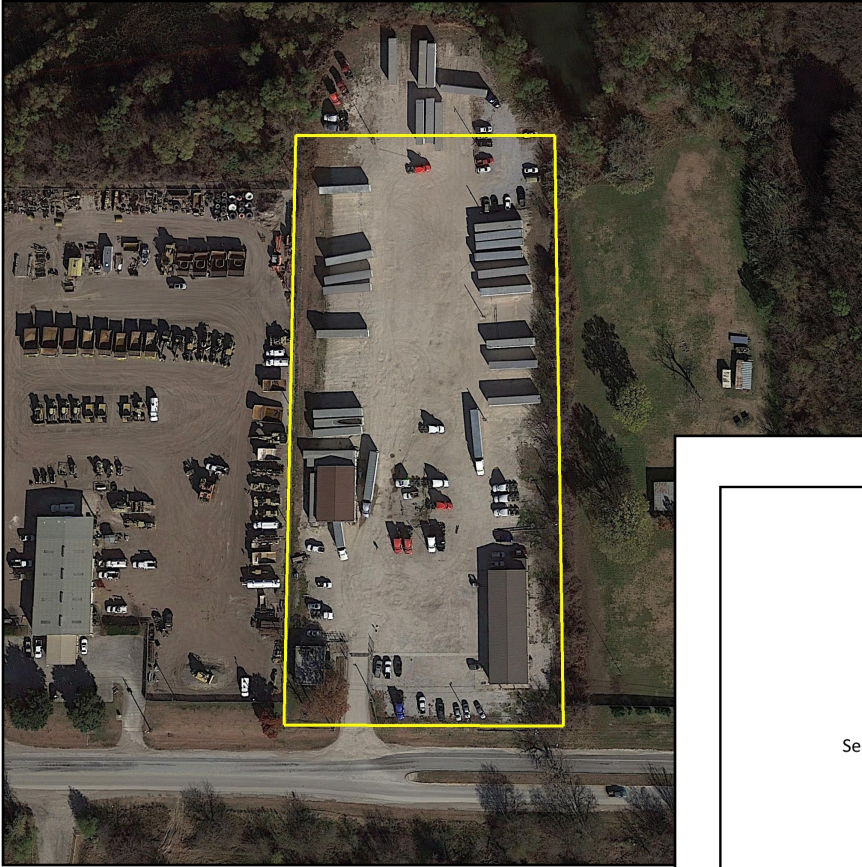
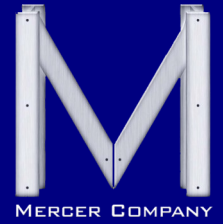
JEREMY MERCER  
CELL 214.682.3447  
JEREMY@MERCER-COMPANY.COM

FOR LEASE: 8,696 SQUARE FEET

506 WILDLIFE PARKWAY, GRAND PRAIRIE, TX 75050

INDUSTRIAL REAL ESTATE BROKERAGE

WWW.MERCER-COMPANY.COM



The information contained herein has been given to us by the owner of the property or other sources we deem reliable. We have no reason to doubt its accuracy, but we do not guarantee it. All information should be verified before purchase or lease.