

Wildwood Plaza East

14748-14796 Clayton Road
Ballwin, MO 63011

705 - 1,968 SQUARE FEET RETAIL / OFFICE AVAILABLE FOR LEASE



- **14756 Clayton Road**
1,410 square feet available
LEASE RATE: \$14.50 PSF NNN
- **14772 Clayton Road**
705 square feet available
LEASE RATE: \$14.50 PSF NNN
- **14780 Clayton Road**
960 square feet available
LEASE RATE: \$9.75 PSF NNN
- **14784 Clayton Road**
1,008 square feet available
LEASE RATE: \$9.75 PSF NNN

- **Both 14780 and 14784 Clayton may be combined to achieve a total of 1,968 square feet**
- Retail center anchored by The Shack, Swim-Bike-Run, Fit-Flavors and The Wine & Cheese Place
- 5.5 per 1,000 parking ratio
- Located at the intersection of Clayton Road and Wildwood Parkway with high visibility from and great access to Clayton Road

DEMOGRAPHICS	(1 MILE)	(3 MILE)	(5 MILE)
Population:	8,905	73,394	165,498
No. of Households:	3,271	28,819	64,510
Average HH Income:	\$124,249	\$119,340	\$124,710

ANNUAL AVERAGE DAILY TRAFFIC	
Clayton Road:	38,273 vehicles

HUTKIN DEVELOPMENT COMPANY

10829 Olive Boulevard
Suite 200
St. Louis, MO 63141

Telephone 314.872.9140
FAX 314.872.9001

Visit our website:
www.hutkin.com

CONTACT

Tony Giarratano
tony@hutkin.com
Cell 314.276.2352

Bo Keefer
bkeefer@hutkin.com
Cell 314.973.1242

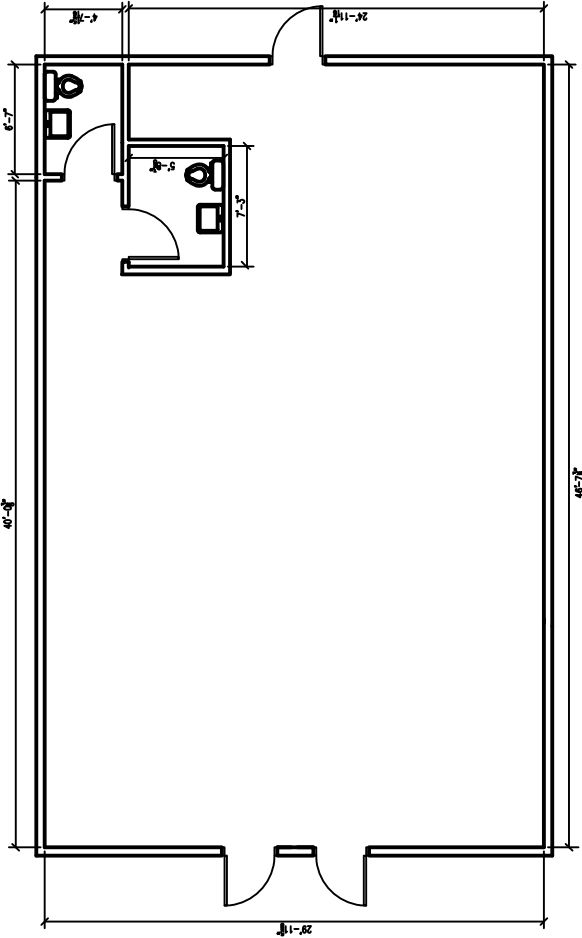
The information contained herein was obtained from a source we consider to be reliable. While we have no reason to doubt its accuracy, we do not guarantee it. All information contained herein is subject to change without notice.

Wildwood Plaza East

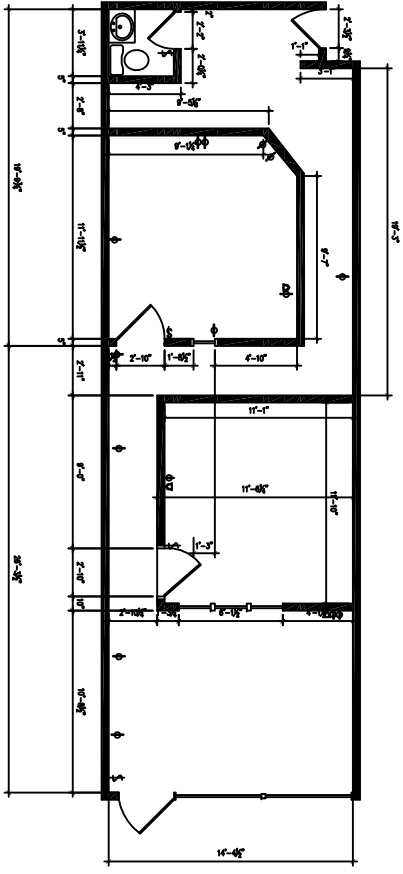
14748-14796 Clayton Road

Ballwin, MO 63011

705 - 1,968 SQUARE FEET RETAIL / OFFICE AVAILABLE FOR LEASE

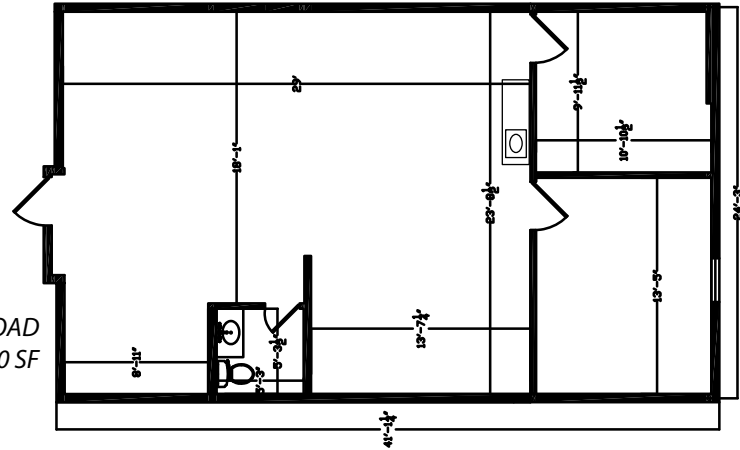


14756 CLAYTON ROAD
1,410 SF

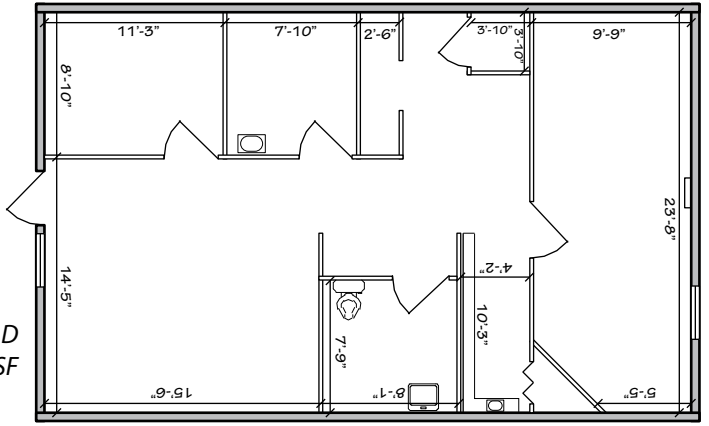


14772 CLAYTON ROAD
705 SF

14780 CLAYTON ROAD
960 SF



14784 CLAYTON ROAD
1,008 SF

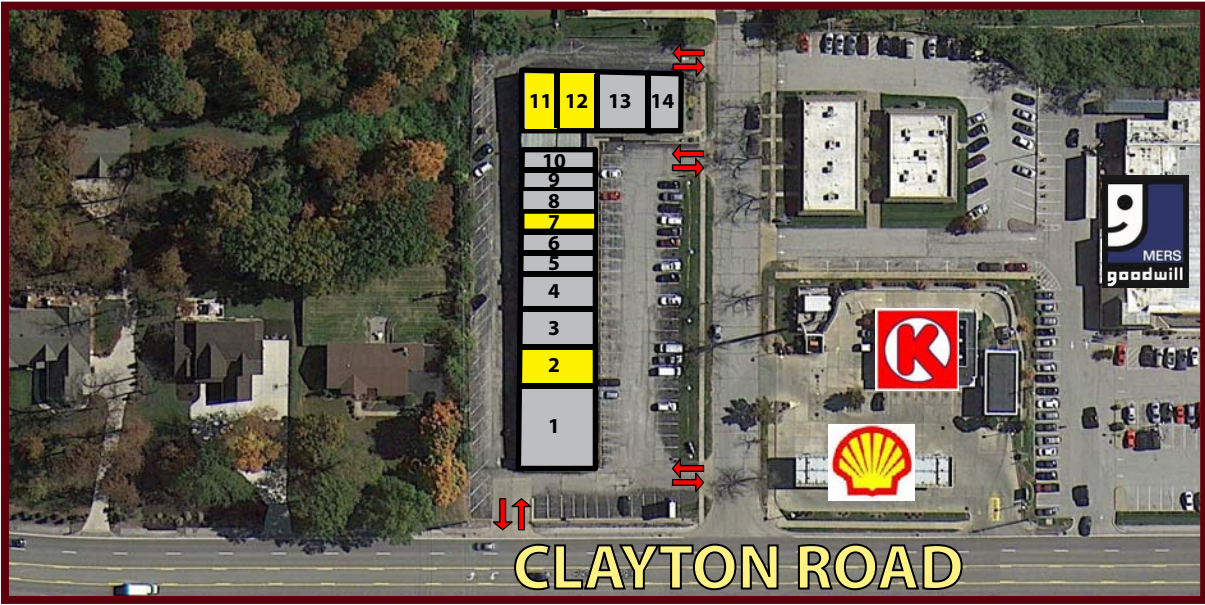


Wildwood Plaza East

14748-14796 Clayton Road

Ballwin, MO 63011

705 - 1,968 SQUARE FEET RETAIL / OFFICE AVAILABLE FOR LEASE



NO.	ADDRESS	STATUS	SIZE (SF)
1	14748 Clayton Road	Occupied	2,820
2	14756 Clayton Road	AVAILABLE	1,410
3	14760 Clayton Road	Occupied	1,410
4	14764 Clayton Road	Occupied	1,410
5	14768 Clayton Road	Occupied	705
6	14770 Clayton Road	Occupied	705
7	14772 Clayton Road	AVAILABLE	705
8	14774 Clayton Road	Occupied	705
9	14776 Clayton Road	Occupied	705
10	14778 Clayton Road	Occupied	705
11	14780 Clayton Road	AVAILABLE	960
12	14784 Clayton Road	AVAILABLE	1,008
13	14792 Clayton Road	Occupied	2,016
14	14796 Clayton Road	Occupied	1,008

