

Publix #1046 - The Groves at Royal Palms

123-127 South State Road 7
 Royal Palm Beach, FL 33414
 Lat 26.675, Long -80.204

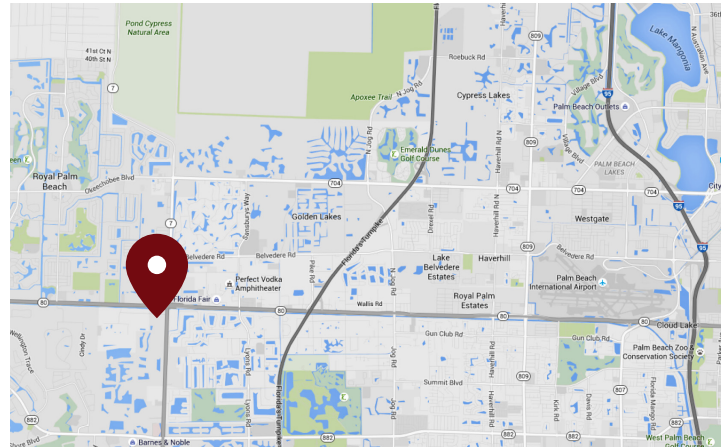
FOR LEASE



1,190 SF AVAILABLE

PROPERTY HIGHLIGHTS

- West Palm Beach MSA
- High Traffic Publix-Anchored Center
- Located on State Road 7 Just South of Southern Boulevard
- Surrounded by High Density Multifamily
- Two Miles from the Mall at Wellington Green
- Traffic Count: 63,500 VPD



DEMOGRAPHICS	1 Mile	3 Miles	5 Miles
Total Population	8,110	74,604	191,923
Daytime Population	9,929	74,989	175,086
Total Households	2,543	26,185	69,019
Avg. HH Income	\$125,623	\$104,755	\$95,537

Data provided by Placer Labs Inc. (www.placer.ai) & Esri

Michael Rautbord

561.447.8529 | mrautbord@crossmanco.com
 890 North Federal Highway, Suite 434, Boca Raton, FL

Licensed Real Estate Broker. No warranty expressed or implied has been made to the accuracy of the information provided herein, no liability assumed for error or omission.



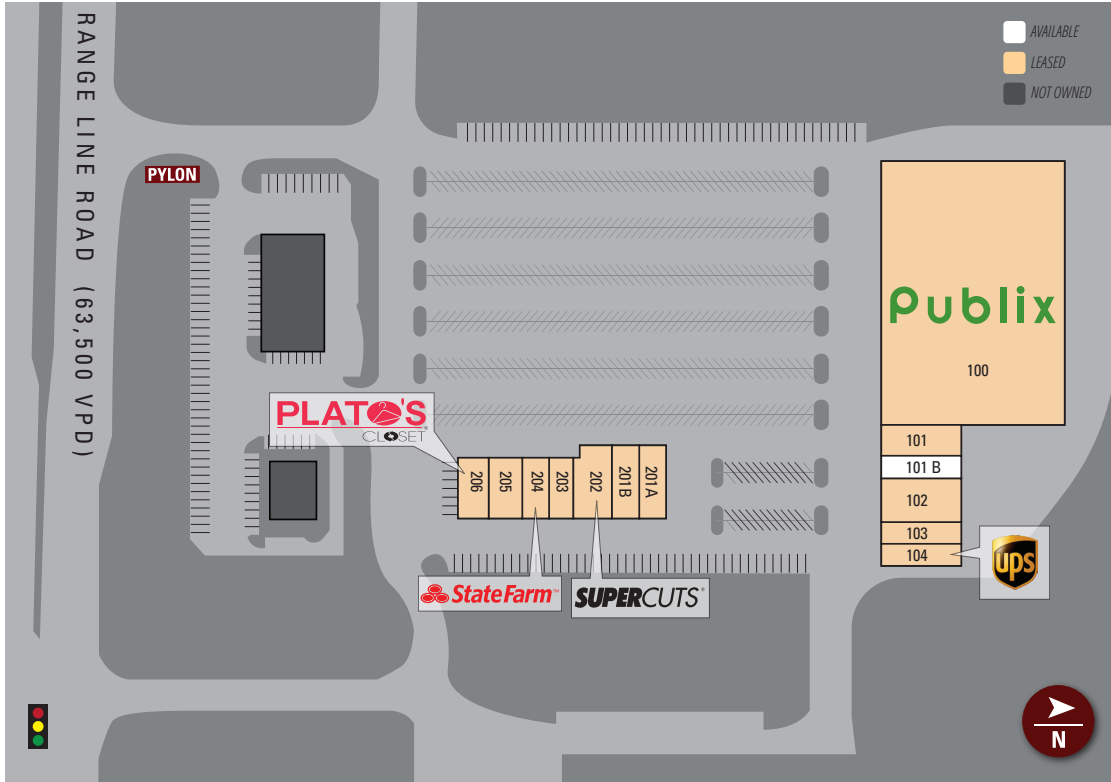
Crossman & Company

www.crossmanco.com

Publix #1046 - The Groves at Royal Palms

123-127 South State Road 7
 Royal Palm Beach, FL 33414
 Lat 26.675, Long -80.204

SITE PLAN



Suite	Tenant	Size
100	Publix	54,376
101	Publix Liquors	1,435
101B	AVAILABLE	1,190
102	Quest Diagnostics	3,000
103	Healthsource of Royal Palm Beach	1,125
104	UPS Store	1,125
201A	Q' Salsas Restaurant	2,100
201B	Oriental Garden	2,450
202	Super Cuts	1,400
203	Absolute Nails	1,200
204	State Farm	1,500
205	Dentist at The Groves	1,500
206	Plato's Closet	3,000

TOTAL 75,401



Michael Rautbord

561.447.8529 | mroutbord@crossmanco.com
 890 North Federal Highway, Suite 434, Boca Raton, FL

Licensed Real Estate Broker. No warranty expressed or implied has been made to the accuracy of the information provided herein, no liability assumed for error or omission.



www.crossmanco.com

Publix #1046 - The Groves at Royal Palms

123-127 South State Road 7
Royal Palm Beach, FL 33414
Lat 26.675, Long -80.204

FOOT TRAFFIC OVERVIEW

EST. # OF CUSTOMERS ANNUALLY

 **163,300**

EST. # OF VISITS ANNUALLY

 **883,900**

AVG. VISITS / CUSTOMER

 **5.41**

AVG. LENGTH-OF-STAY / VISIT

 **36 MIN**

TOP 3 DAYS



Saturday	155,519
Sunday	150,864
Friday	123,068

OF VISITS

TOP 3 HOURS

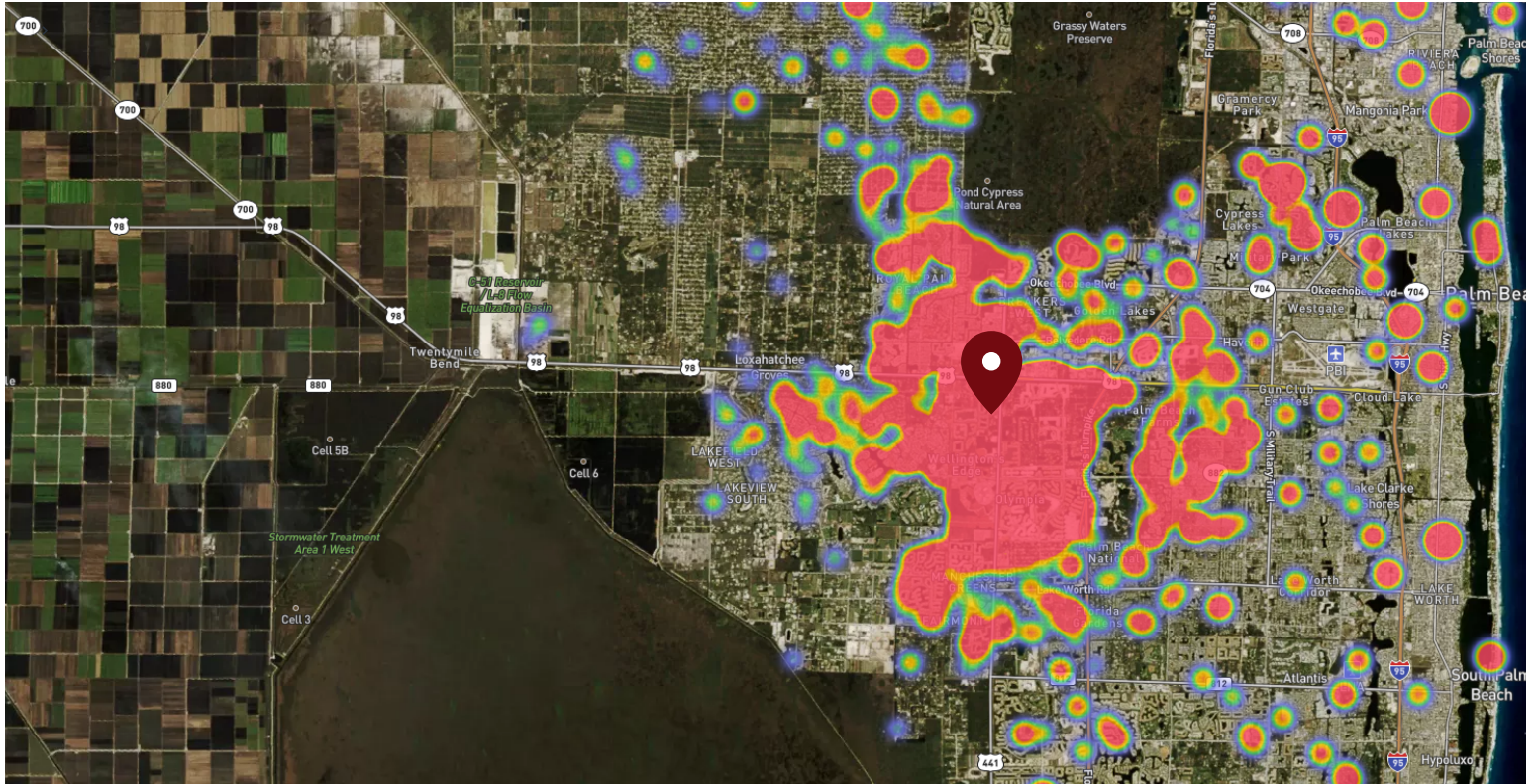


5-6 PM	148,510
4-5 PM	137,976
6-7 PM	135,072

OF VISITS

Data provided by Placer Labs Inc. (www.placer.ai) Nov 1, 2019 - Oct 31, 2020

SITE VISIT DENSITY



Red, orange, and yellow colors represent the location of 60% of site visitors

Data provided by Placer Labs Inc. (www.placer.ai)

Michael Rautbord

561.447.8529 | mroutbord@crossmanco.com

890 North Federal Highway, Suite 434, Boca Raton, FL

Licensed Real Estate Broker. No warranty expressed or implied has been made to the accuracy of the information provided herein, no liability assumed for error or omission.



www.crossmanco.com