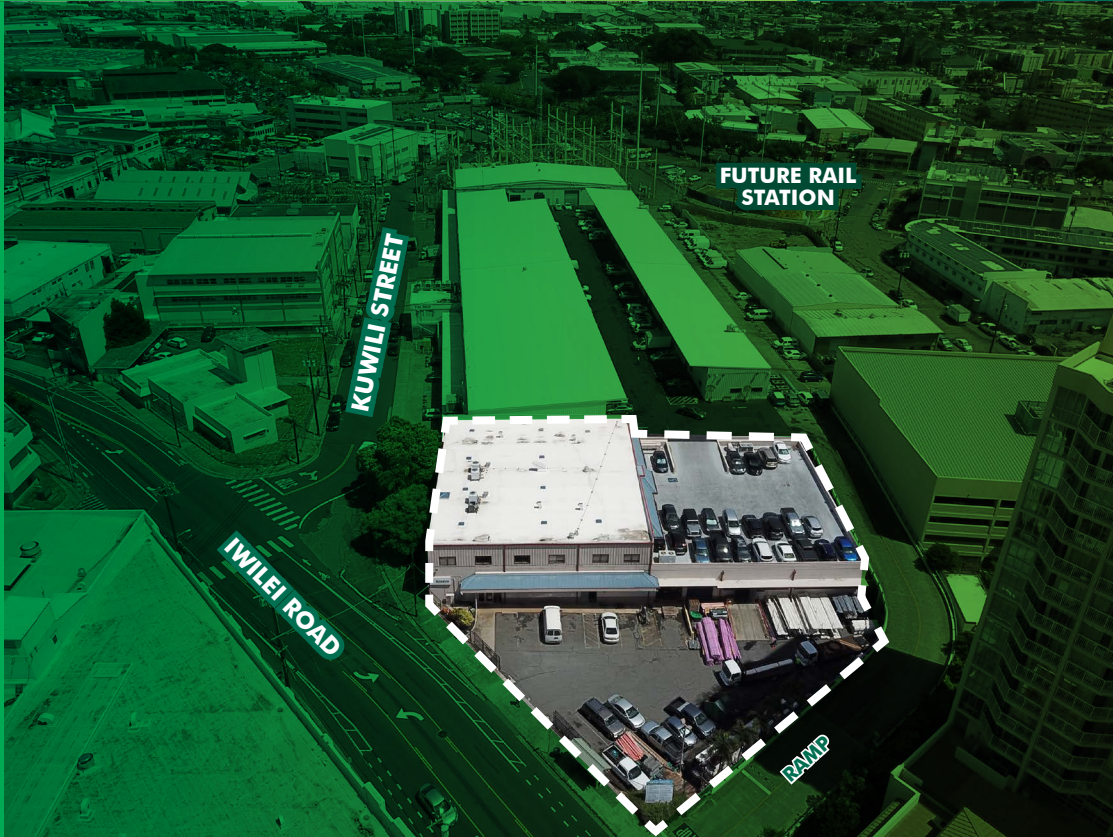


# IWILEI CENTER

850 IWILEI ROAD | HONOLULU, HI 96817

**FOR LEASE**  
**QUASI RETAIL/  
INDUSTRIAL SPACE  
WITH YARD AND DOCKS**



## OPPORTUNITY

Iwilei Center offers this quasi retail/industrial space for lease. It is conveniently located on Iwilei Road within approximately 4 minutes drive (0.50 mile) to downtown Honolulu and approximately 6 minutes drive (4.3 miles) from Honolulu International Airport. Small, medium and large warehouses and offices can be combined.

## FEATURES

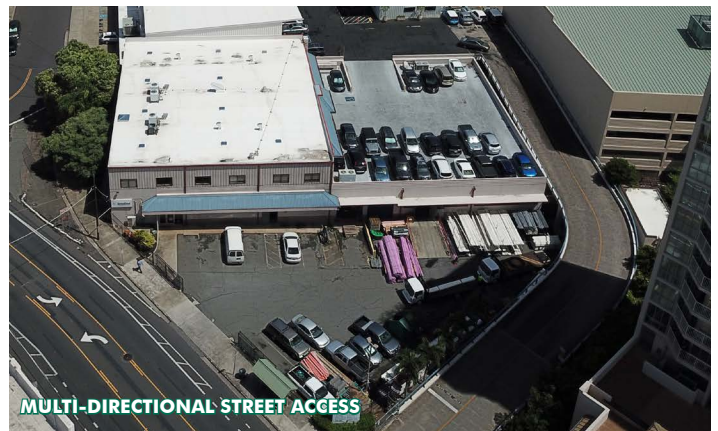
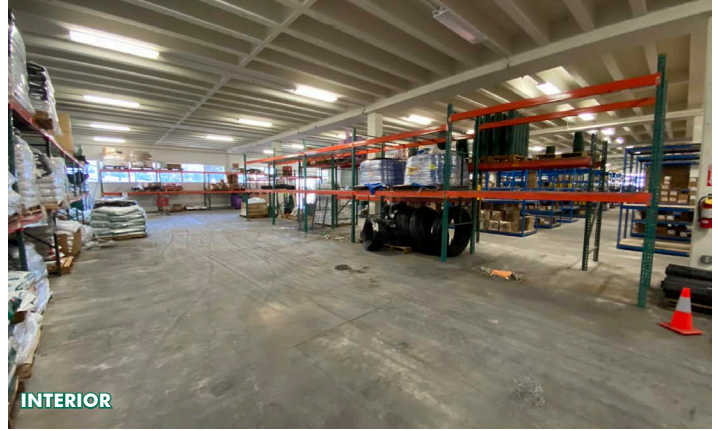
- + In town warehouse
- + Two adjacent docks
- + Loading ramp
- + Landlord will consider Tenant Improvement
- + Large fenced paved yard (approx 8,000 SF)
- + Located at HART station
- + Ceiling height - 13'

## PROPERTY INFO

ADDRESS	850 Iwilei Rd. Honolulu, HI 96817
SIZE	15,783 SF
BASE RENT	Call for information
CAM	\$0.54/sf/mo
ZONE	IMX-1
FLOOD ZONE	X
TOD ZONE	Mixed Use High Density

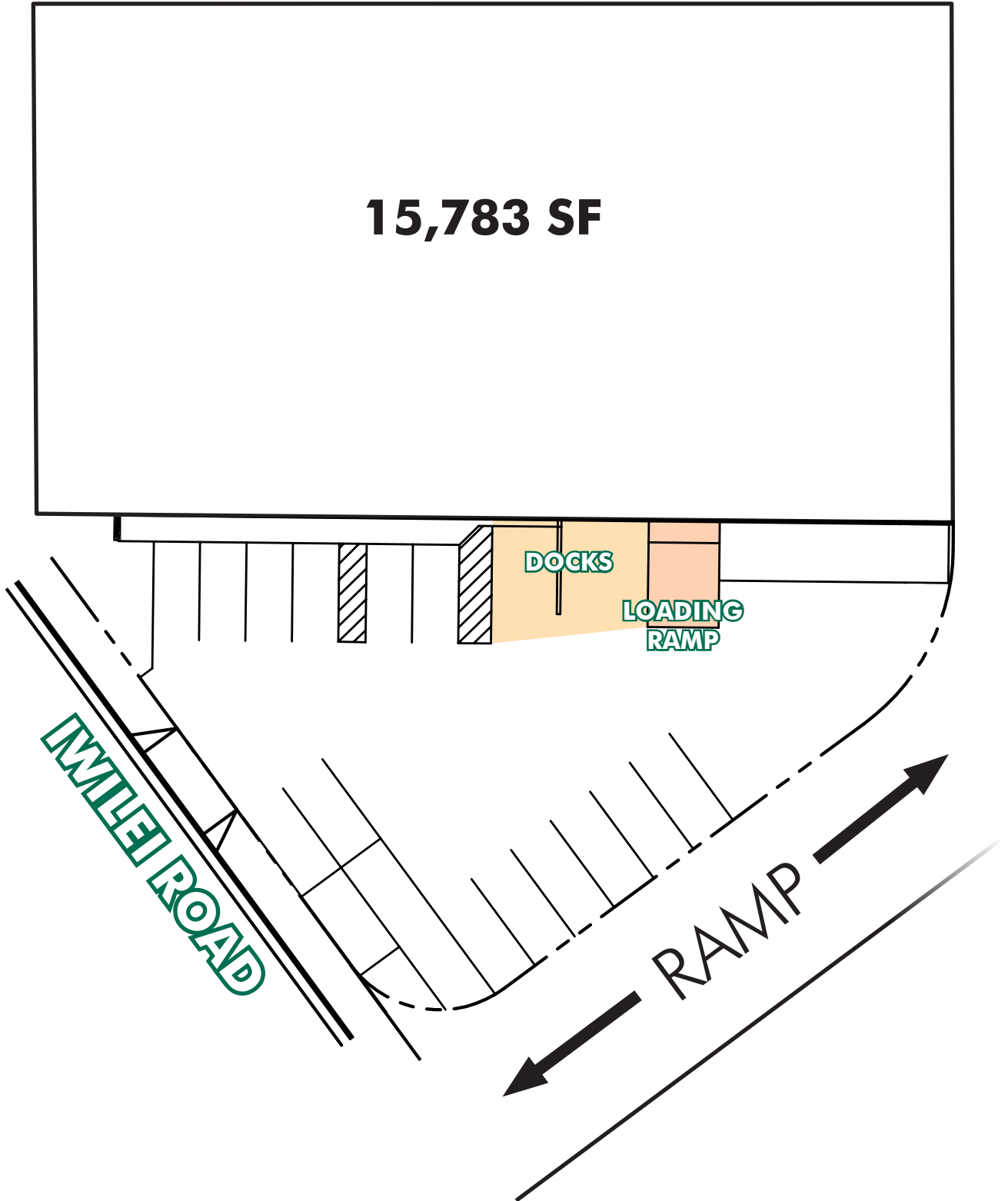


# PHOTOS



# SITE PLAN

**KUWILI STREET**



\*All measurements and information are approximate





## CONTACT US

### PETER GROSSMAN

Senior Vice President  
 +1 808 541 5143  
 peter.grossman@cbre.com  
 Lic. RS-68843

### JIE MING XIE

Associate  
 +1 808 541 5154  
 jie.xie@cbre.com  
 Lic. RS-73904

### KEANE OMAJE-BACKMAN

Client Services Specialist  
 +1 808 541 5153  
 keane.backman@cbre.com  
 Lic. RS-76415

© 2019 CBRE, Inc. All rights reserved. This information has been obtained from sources believed reliable, but has not been verified for accuracy or completeness. You should conduct a careful, independent investigation of the property and verify all information. Any reliance on this information is solely at your own risk. CBRE and the CBRE logo are service marks of CBRE, Inc. All other marks displayed on this document are the property of their respective owners, and the use of such logos does not imply any affiliation with or endorsement of CBRE. Photos herein are the property of their respective owners. Use of these images without the express written consent of the owner is prohibited.