

**2727 S. El Camino Real, San Mateo, CA 94403**



**FOR LEASE**  
**Retail & Office**

**FOR MORE INFORMATION, PLEASE CONTACT:**

**Jessie Chou**

Phone: (408) 868-8149

E-mail: [jessie@centralpd.com](mailto:jessie@centralpd.com)

# 2727 S. El Camino Real, San Mateo, CA 94403

## Property Highlights:

- **High Profile Location** - The Property is located in a high-barrier to entry location and within four blocks of the Hillsdale Shopping Center, several retail/office and residential developments, major retailers and public transportation.
- **Strong Daytime/Early Evening Population**
- **Excellent Access to State Route 101 & 92**
- **Maximum Contiguous to ± 10,232 SF**



Drawings are not exact and not to scale. The information contained in this document has been obtained from sources believed reliable and is submitted subject to errors, omissions and changes. Landlord does not doubt its accuracy but makes no guarantee, warranty or representation about it. Any projections, opinions, assumptions or estimates used are for example only and do not represent the current or future performance of the property. The value of this transaction to you depends on tax and other factors which should be evaluated by your tax, financial and legal advisors. You and your advisors should conduct a careful, independent investigation of the property to determine to your satisfaction the suitability of the property for your needs. All information should be verified for their accuracy and completeness by the recipient prior to lease, purchase, exchange, or execution of legal documents. © 2017 San Mateo Mall, LLC

# 2727 S. El Camino Real, San Mateo, CA 94403

## Parcel Map / Property Profile:

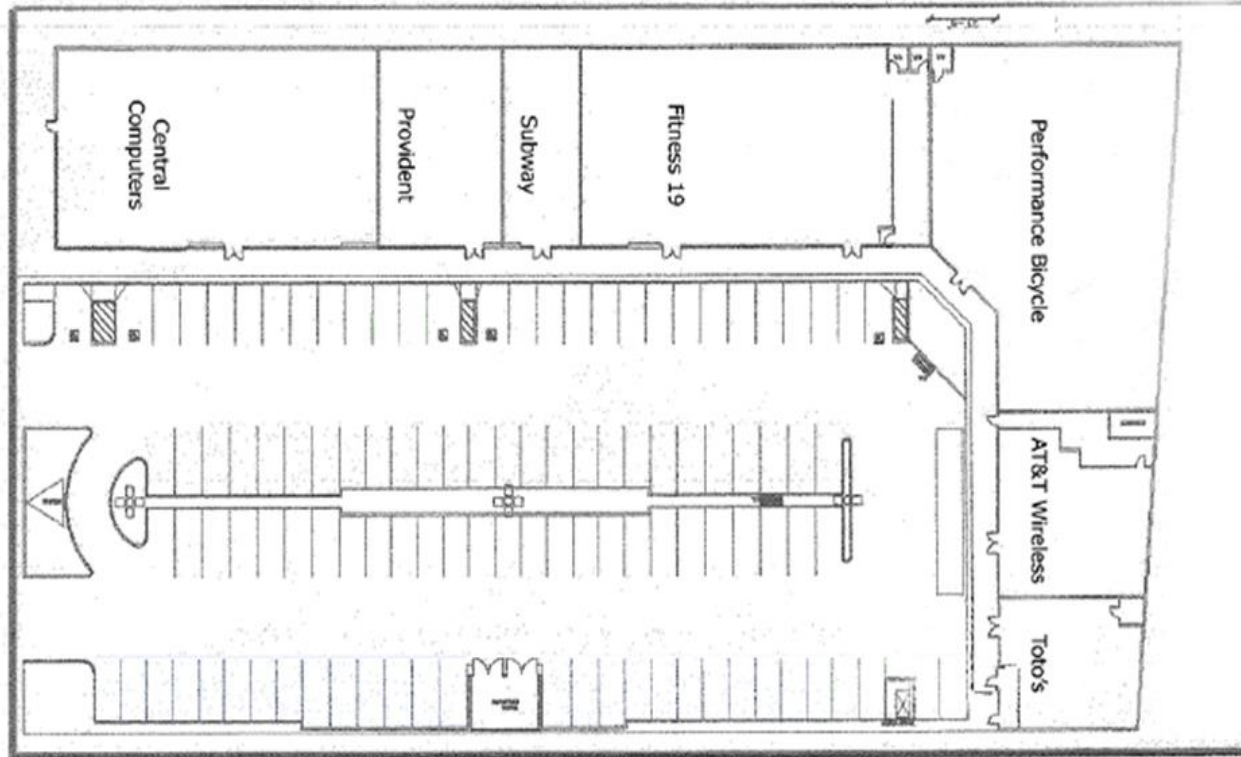


- **Square Feet:**  
**29,461 S.F. (28,927 S.F. Rentable Area)**
- **Lot Size: 1.69Acres**
- **Year Built: 1983**
- **Use Code:**  
**Regional:**  
**Shopping Center, Mall (w/Anchor)**
- **Primary Owner:**  
**San Mateo Mall, LLC**

Drawings are not exact and not to scale. The information contained in this document has been obtained from sources believed reliable and is submitted subject to errors, omissions and changes. Landlord does not doubt its accuracy but makes no guarantee, warranty or representation about it. Any projections, opinions, assumptions or estimates used are for example only and do not represent the current or future performance of the property. The value of this transaction to you depends on tax and other factors which should be evaluated by your tax, financial and legal advisors. You and your advisors should conduct a careful, independent investigation of the property to determine to your satisfaction the suitability of the property for your needs. All information should be verified for their accuracy and completeness by the recipient prior to lease, purchase, exchange, or execution of legal documents. © 2015 San Mateo Mall, LLC

# 2727 S. El Camino Real, San Mateo, CA 94403

## Site Plan:



- **109 Stalls on Site.**
- **3.5 for each 1,000 square feet of gross floor area (no exclusions)**
- **for all buildings and/or uses in the center.**

Drawings are not exact and not to scale. The information contained in this document has been obtained from sources believed reliable and is submitted subject to errors, omissions and changes. Landlord does not doubt its accuracy but makes no guarantee, warranty or representation about it. Any projections, opinions, assumptions or estimates used are for example only and do not represent the current or future performance of the property. The value of this transaction to you depends on tax and other factors which should be evaluated by your tax, financial and legal advisors. You and your advisors should conduct a careful, independent investigation of the property to determine to your satisfaction the suitability of the property for your needs. All information should be verified for their accuracy and completeness by the recipient prior to lease, purchase, exchange, or execution of legal documents. © 2015 San Mateo Mall, LLC

# 2727 S. El Camino Real, San Mateo, CA 94403

## Spaces Available:

Suite	Size	Rent	CAM	Type	Monthly Rent + CAM
F*	7,732	Negotiable	\$0.60	NNN	
G**	2,500	\$3.75/SF/Month	\$0.60	NNN	\$9,375.00 + \$1,500.00

### Note

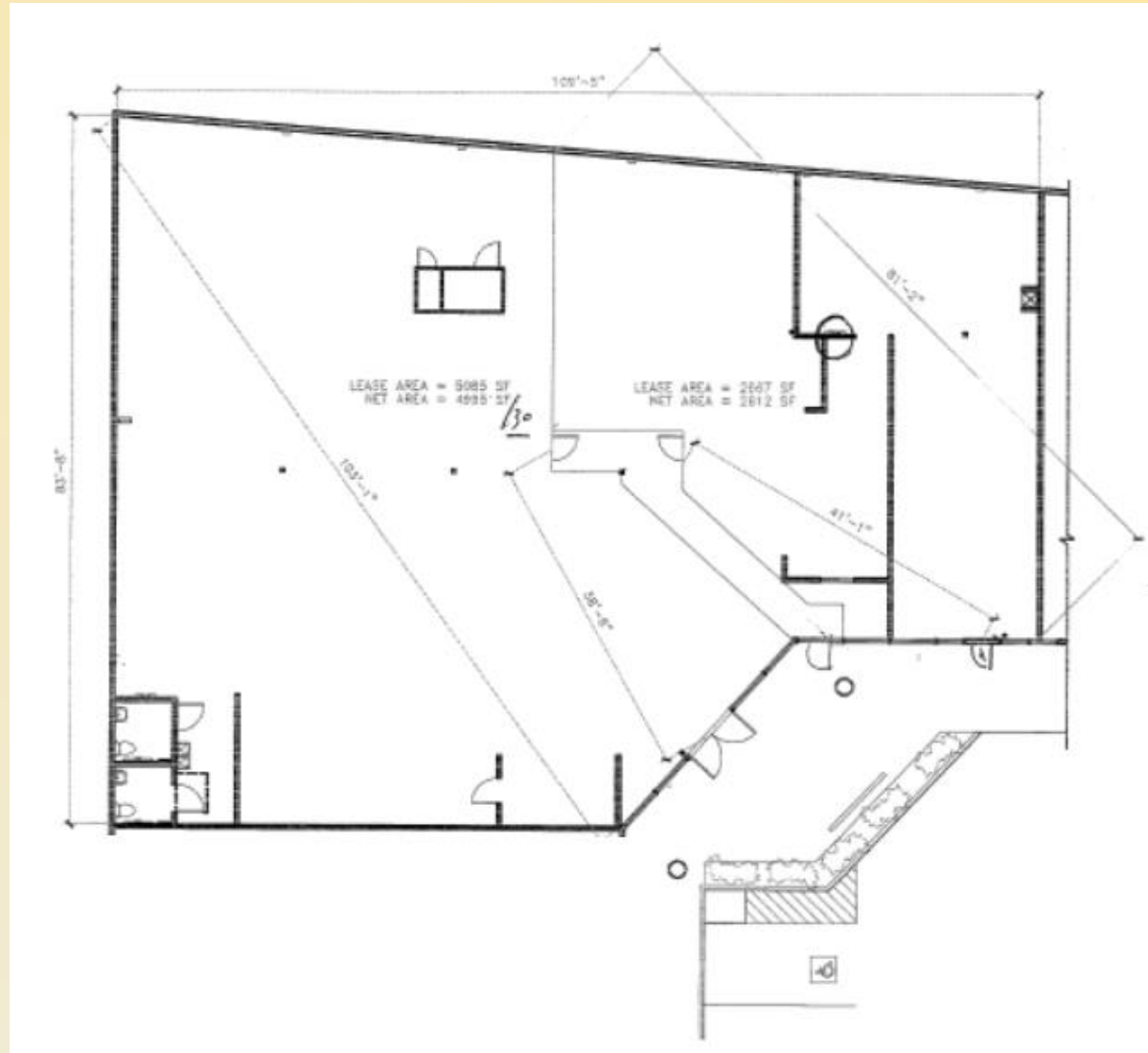
\* The existing tenant is Performance Bicycle.

\*\* It was AT & T retail store.



# 2727 S. El Camino Real, San Mateo, CA 94403

## #F Floor Plan:

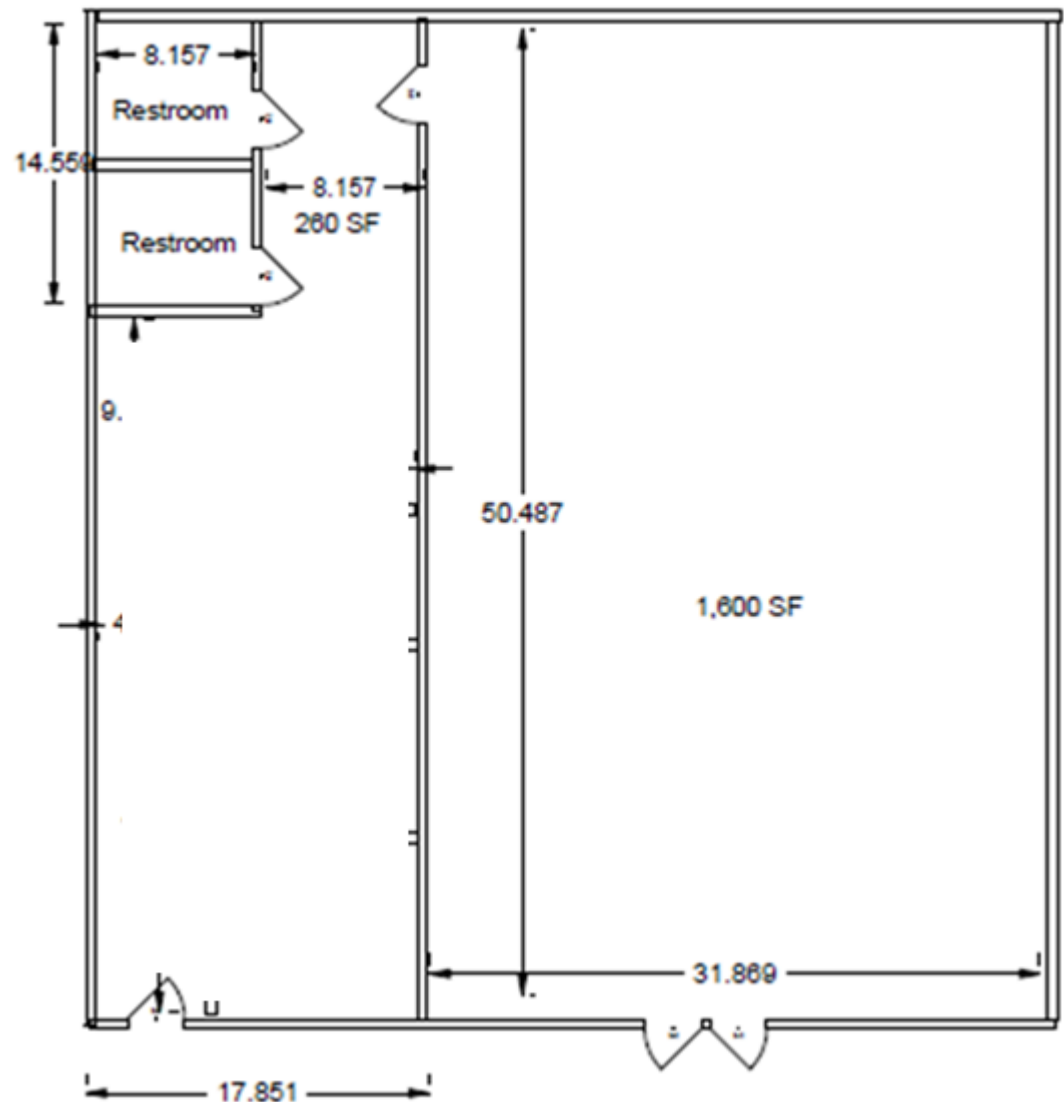


### Note

Note: This drawing is for reference purposes only, as indication of Premises location, size, and shape are not necessarily precise or accurate.

# 2727 S. El Camino Real, San Mateo, CA 94403

## #G Floor Plan:

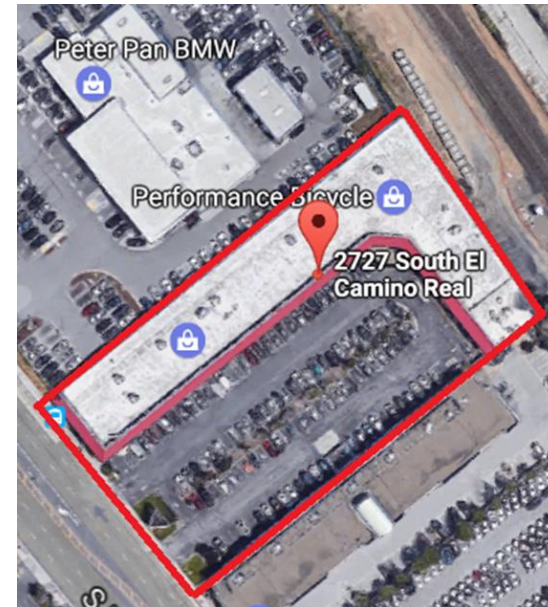
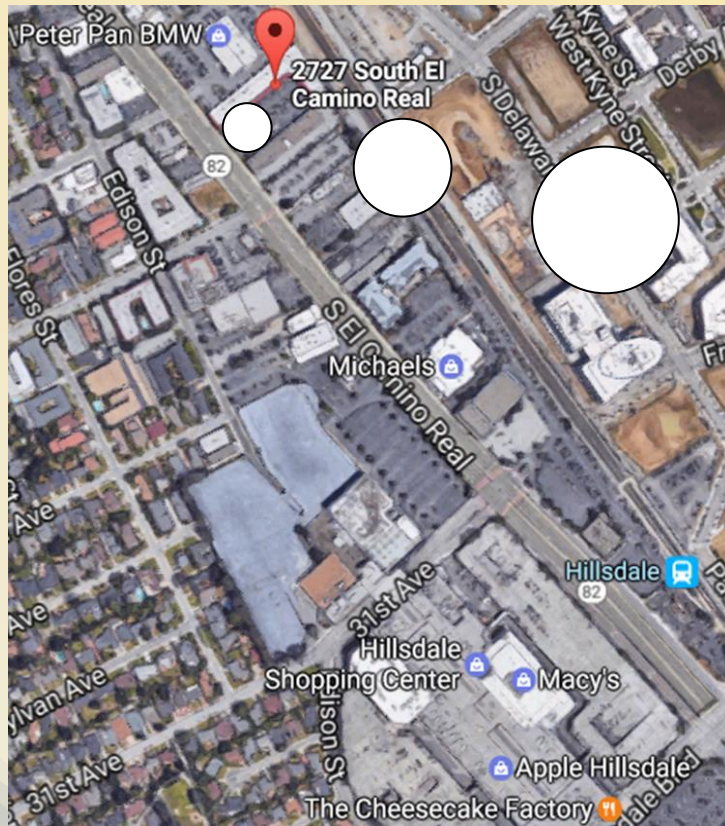


### Note

Note: This drawing is for reference purposes only, as indication of Premises location, size, and shape are not necessarily precise or accurate.

# 2727 S. El Camino Real, San Mateo, CA 94403

## Aerial:



Drawings are not exact and not to scale. The information contained in this document has been obtained from sources believed reliable and is submitted subject to errors, omissions and changes. Landlord does not doubt its accuracy but makes no guarantee, warranty or representation about it. Any projections, opinions, assumptions or estimates used are for example only and do not represent the current or future performance of the property. The value of this transaction to you depends on tax and other factors which should be evaluated by your tax, financial and legal advisors. You and your advisors should conduct a careful, independent investigation of the property to determine to your satisfaction the suitability of the property for your needs. All information should be verified for their accuracy and completeness by the recipient prior to lease, purchase, exchange, or execution of legal documents. © 2015 San Mateo Mall, LLC



# 2727 S. El Camino Real, San Mateo, CA 94403

## Neighborhood:



Drawings are not exact and not to scale. The information contained in this document has been obtained from sources believed reliable and is submitted subject to errors, omissions and changes. Landlord does not doubt its accuracy but makes no guarantee, warranty or representation about it. Any projections, opinions, assumptions or estimates used are for example only and do not represent the current or future performance of the property. The value of this transaction to you depends on tax and other factors which should be evaluated by your tax, financial and legal advisors. You and your advisors should conduct a careful, independent investigation of the property to determine to your satisfaction the suitability of the property for your needs. All information should be verified for their accuracy and completeness by the recipient prior to lease, purchase, exchange, or execution of legal documents. © 2015 San Mateo Mall, LLC