

FOR SUBLEASE

# OFFICE FOR SUBLEASE

FIRST HAWAIIAN CENTER

999 BISHOP STREET, SUITE 1800

HONOLULU, HI 96813



## OFFICE SPACE

First Hawaiian Center is Hawaii's premier Class A office complex located in the Central Business District of Honolulu. The building is an efficient, state-of-the-art headquarters for Hawaii's oldest bank; First Hawaiian Bank. First Hawaiian Center differentiates itself with highest quality finishes throughout featuring granite, marble, stainless steel, glass/air conditioned exterior elevators, a fine line ceiling grid, and higher and more luxurious ceiling heights than any other building in Hawaii.



## CONTACT US

### ANDREW D. REENDERS

Vice President  
+1 808 541 5146  
andrew.reenders@cbre.com  
Lic. RB-21784

### SHAWLEA K. AONA

Senior Associate  
+1 808 541 5142  
shawlea.aona@cbre.com  
Lic. RS-73197

[www.cbre.us/hawaii](http://www.cbre.us/hawaii)

**CBRE**  
LIC. RB-20142

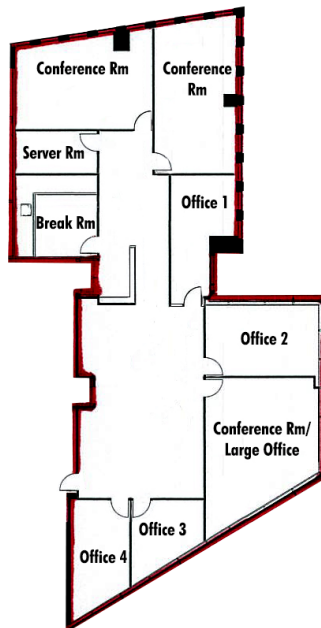
# FOR SUBLEASE FIRST HAWAIIAN CENTER

999 BISHOP STREET, SUITE 1800  
HONOLULU, HI 96813



## OFFERING SUMMARY

<b>Available</b>	Now
<b>Size</b>	4,487 SF (four private offices, 2 conference rooms, 1 server room, 1 break room, bullpen with 11 work stations)
<b>Base Rent</b>	\$1.00 SF/MO (no FF&E) \$1.25 SF/MO (with FF&E) 3% annual escalations
<b>Operating Expenses</b>	\$1.35 SF/MO
<b>Term Expires</b>	July 31, 2023
<b>Parking</b>	4 reserved stalls and 6 unreserved stalls at building standard rates, currently \$340.00/MO and \$236.00/MO



© 2018 CBRE, Inc. All rights reserved. This information has been obtained from sources believed reliable, but has not been verified for accuracy or completeness. You should conduct a careful, independent investigation of the property and verify all information. Any reliance on this information is solely at your own risk. CBRE and the CBRE logo are service marks of CBRE, Inc. All other marks displayed on this document are the property of their respective owners. Photos herein are the property of their respective owners. Use of these images without the express written consent of the owner is prohibited.

SA:JS\_OF42\_FirstHawaiianCenter\_06.05.18