

For Lease

Property Summary

Northlake Corporate Centre is nestled among magnificent live oak trees along Highway 190 in Covington, LA, just south of Interstate 12, minutes from the Causeway Bridge. Amenities include ample parking for tenants and visitors, an on-site fitness facility available to tenant employees for a monthly fee, and an on-site water treatment facility. The building is also equipped with an emergency generator ensuring uninterrupted electrical service to the building.

Building Size

- 28,800 SF

Year Built

- 2008

Price

- \$21.00 per square foot

Total Parking Spaces

- 128

Available

- 10,482 SF
- Suite 100 - 1,776 SF
- Suite 2A - 5,806 SF
- Suite 2B - 2,900 SF

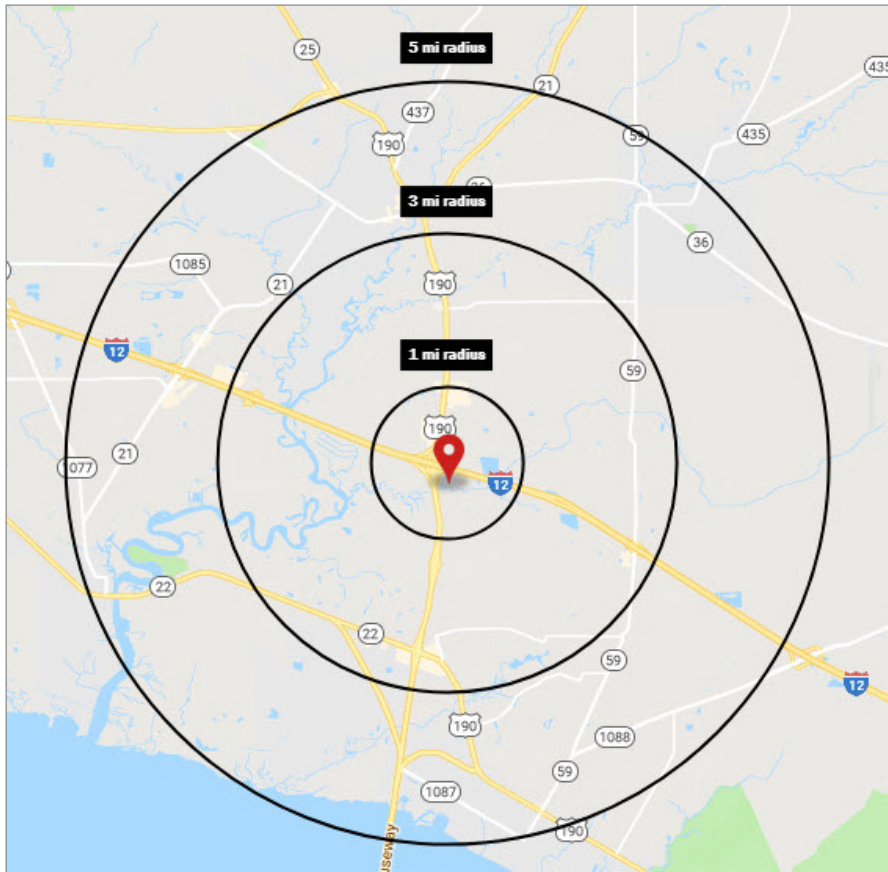
2019 Demographics

	1 mi.	3 mi.	5 mi.
Population	4,650	41,580	88,396
Avg. HH Income	\$125,136	\$104,930	\$100,344

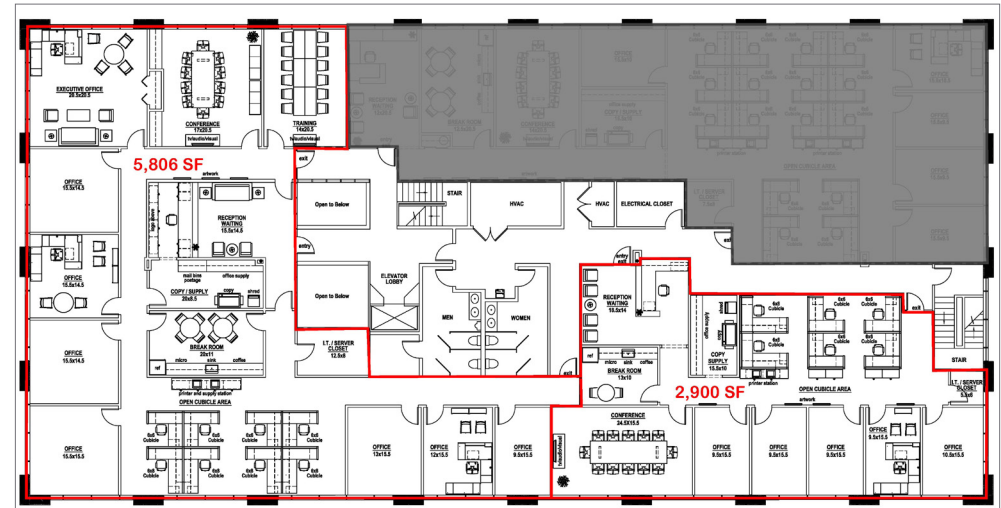


Northlake Corporate Centre

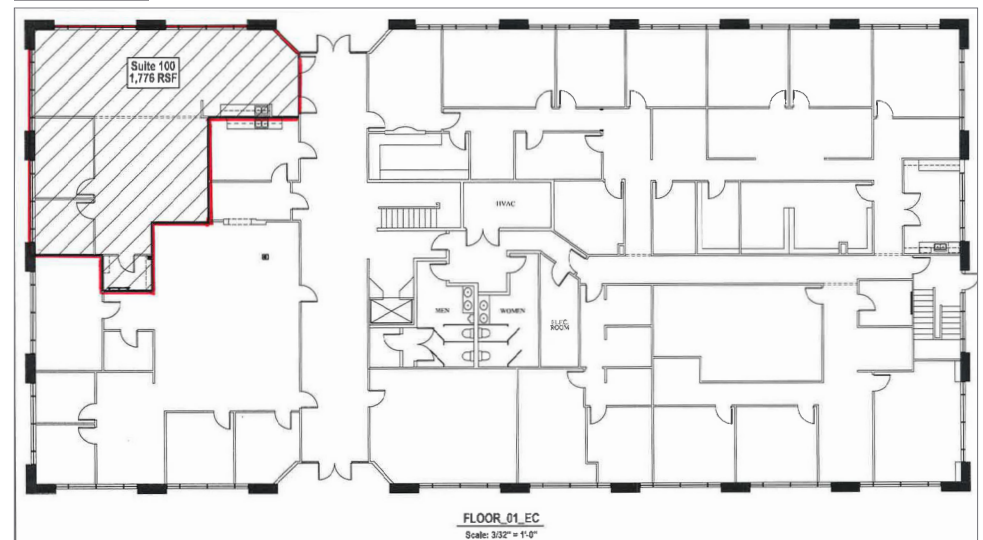
1001 Highway 190 East Service Road, Covington, LA



Option A Floor Plan - 2nd Floor



Suite 100



FLOOR_01_EC
Scale: 3/32" = 1'-0"