

27 EAST ALLEN STREET

PHILADELPHIA, PA

±10,908 SF ON FIRST FLOOR & 1,785 SF ON SECOND FLOOR AVAILABLE FOR LEASE

JOIN



property highlights.

- Premier entertainment space adjacent to The Fillmore
- Close to Frankford Avenue & Richmond Street line
- Prime office space or showroom with elevator on second floor
- Ideal for entertainment & full service restaurant
- Access from I-95 & I-676

stats.

2018 DEMOGRAPHICS*	1 MILE	3 MILES	5 MILES
EST. POPULATION	35,790	444,938	959,972
EST. HOUSEHOLDS	16,558	184,215	374,882
EST. AVG. HH INCOME	\$95,765	\$77,429	\$64,416

I-95 TRAFFIC COUNT: 174,389 VPD *ESRI 2018



METRO[®]
COMMERCIAL
REAL ESTATE, INC.

MetroCommercial.com | PHILADELPHIA, PA | PLYMOUTH MEETING, PA | MOUNT LAUREL, NJ | NAPLES, FL

get in touch.

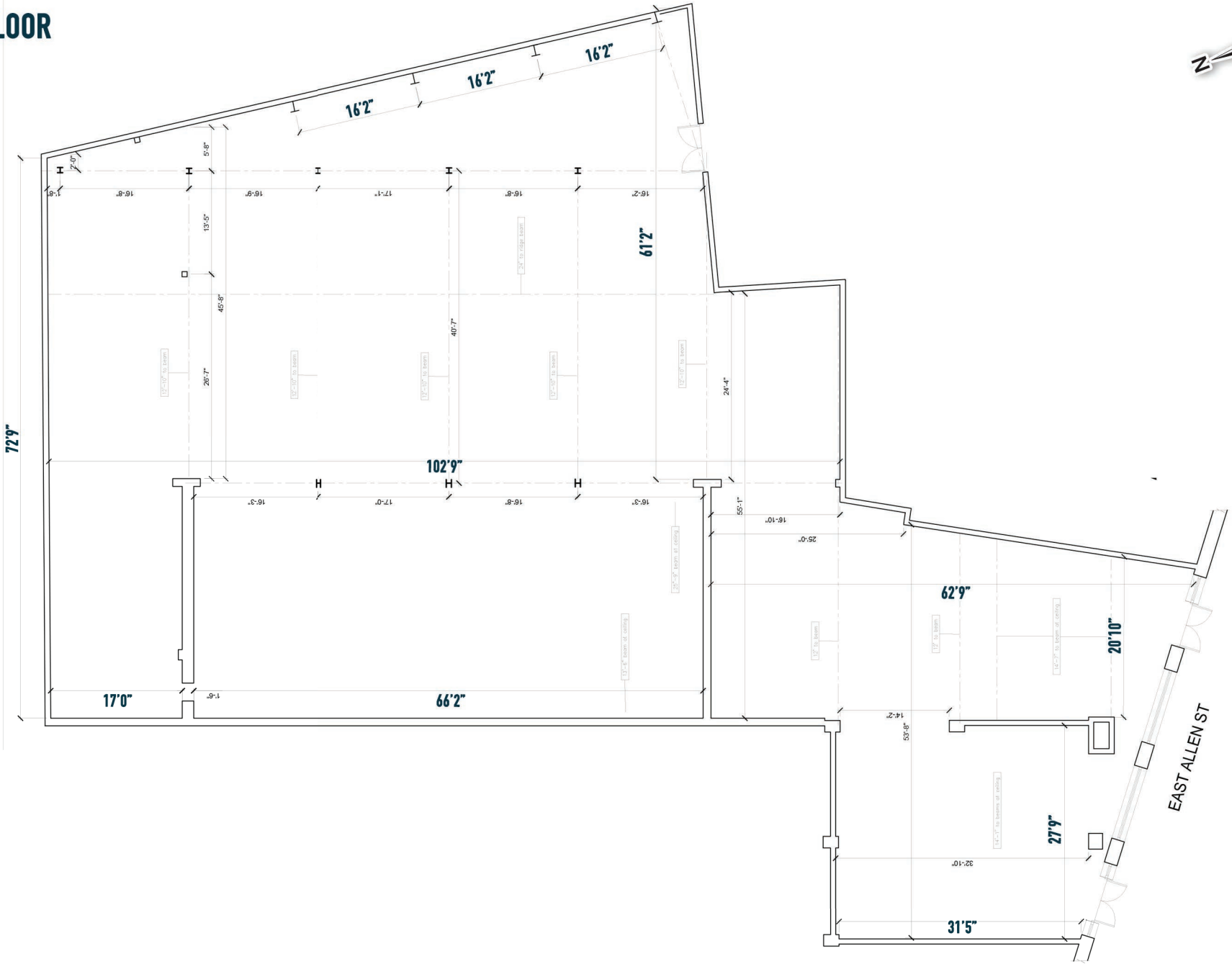
SCOTT BENSON

office 215.893.0300
direct 215.282.0158
sbenson@metrocommercial.com

JONATHAN SPOERL

office 215.893.0300
direct 215.282.0157
jspoerl@metrocommercial.com

FIRST FLOOR

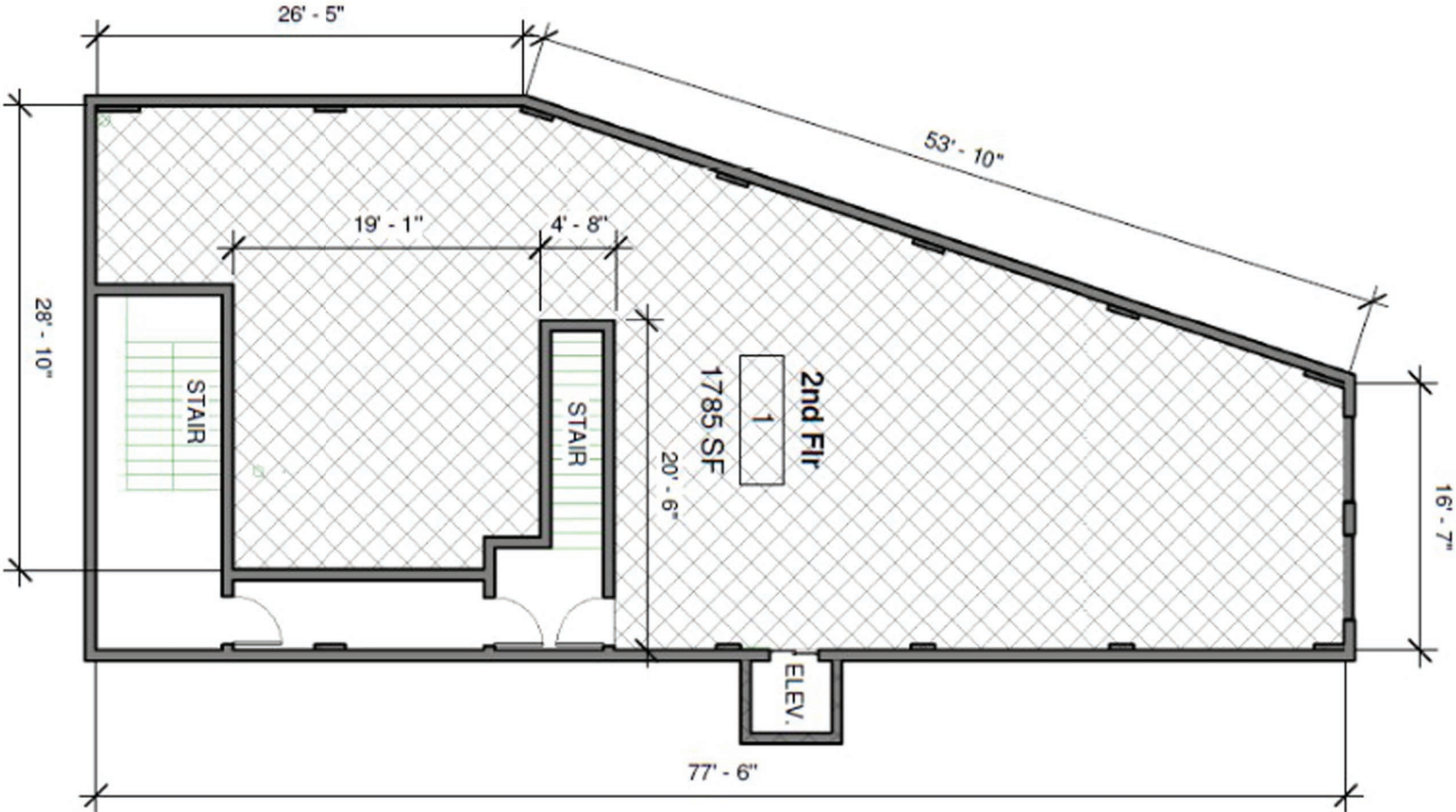


The information and images contained herein are from sources deemed reliable. However, Metro Commercial Real Estate, Inc. makes no representation whatsoever as to their accuracy or authenticity. Images shown may be modified for illustrative purposes. Images may be out-of-date and not current. 12.30.19

**27 EAST ALLEN STREET
PHILADELPHIA, PA**



SECOND FLOOR



The information and images contained herein are from sources deemed reliable. However, Metro Commercial Real Estate, Inc. makes no representation whatsoever as to their accuracy or authenticity. Images shown may be modified for illustrative purposes. Images may be out-of-date and not current. 11.21.19

27 EAST ALLEN STREET
PHILADELPHIA, PA





The information and images contained herein are from sources deemed reliable. However, Metro Commercial Real Estate, Inc. makes no representation whatsoever as to their accuracy or authenticity. Images shown may be modified for illustrative purposes. Images may be out-of-date and not current. 12.30.19

**27 EAST ALLEN STREET
PHILADELPHIA, PA**





AVAILABLE
±1,785 SF
(2ND FLOOR)

AVAILABLE
±10,908 SF
(1ST FLOOR)

PHILADELPHIA
DISTILLING
1ST FLOOR

PUNCH LINE
PHILLY

GOOSE
ISLAND

EAST ALLEN STREET

LAUREL STREET

8,194 VPD
FRANKFORD AVENUE

THE FILLMORE
PHILADELPHIA

BROOKLYN
BOWL

MAD REX
A VIBRANTE POST - PHILADELPHIA

DELAWARE AVENUE 18,413 VPD

RIVERS
CASINO
PHILADELPHIA

95
174,389 VPD



The information and images contained herein are from sources deemed reliable. However, Metro Commercial Real Estate, Inc. makes no representation whatsoever as to their accuracy or authenticity. Images shown may be modified for illustrative purposes. Images may be out-of-date and not current. 12.30.19

27 EAST ALLEN STREET
PHILADELPHIA, PA





The information and images contained herein are from sources deemed reliable. However, Metro Commercial Real Estate, Inc. makes no representation whatsoever as to their accuracy or authenticity. Images shown may be modified for illustrative purposes. Images may be out-of-date and not current. 12.30.19

**27 EAST ALLEN STREET
PHILADELPHIA, PA**

