

CORNER OF LAUREL & WAYNE STREET

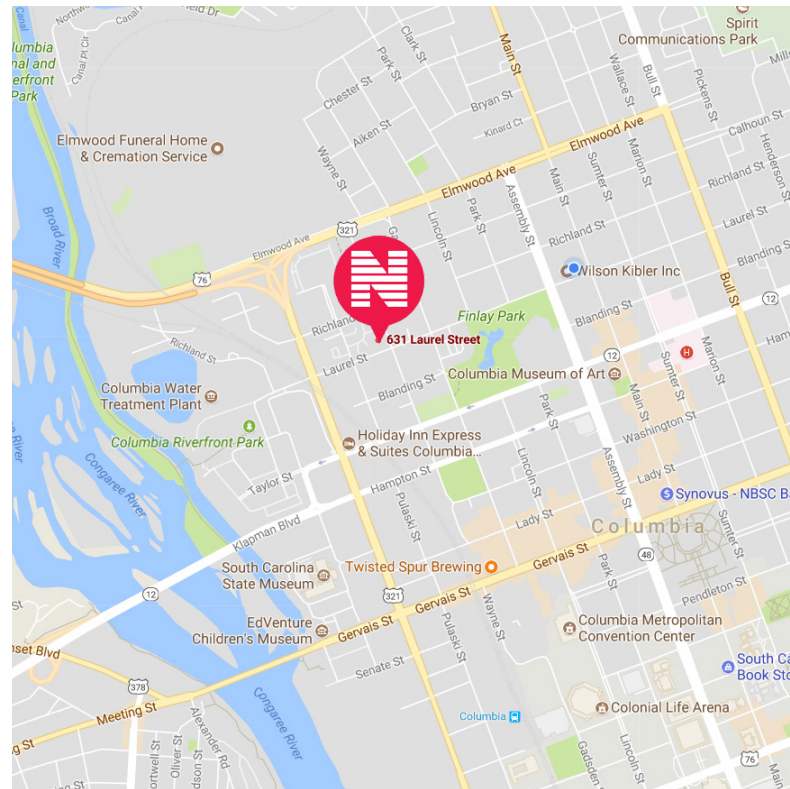
631 Laurel Street

Downtown Columbia, South Carolina



PRICE REDUCED

- ◆ Medium density residential development opportunity
- ◆ Prominent location on the corner of Wayne & Laurel Streets in Arsenal Hill
- ◆ ±370 feet street frontage along Laurel & Wayne
- ◆ Near the Governor's Mansion, Finlay Park and downtown Columbia
- ◆ ±0.75 Acres
- ◆ Zoned RG-3
- ◆ Property adjacent to established residential neighborhood
- ◆ **SALES PRICE: \$375,000**
\$320,000



1111 Laurel Street, Columbia, SC 29201 T 803.779.8600 www.wilsonkibler.com

Newmark
Wilson Kibler

Brooks Owings

803.255.8642 brooks.owings@wilsonkibler.com

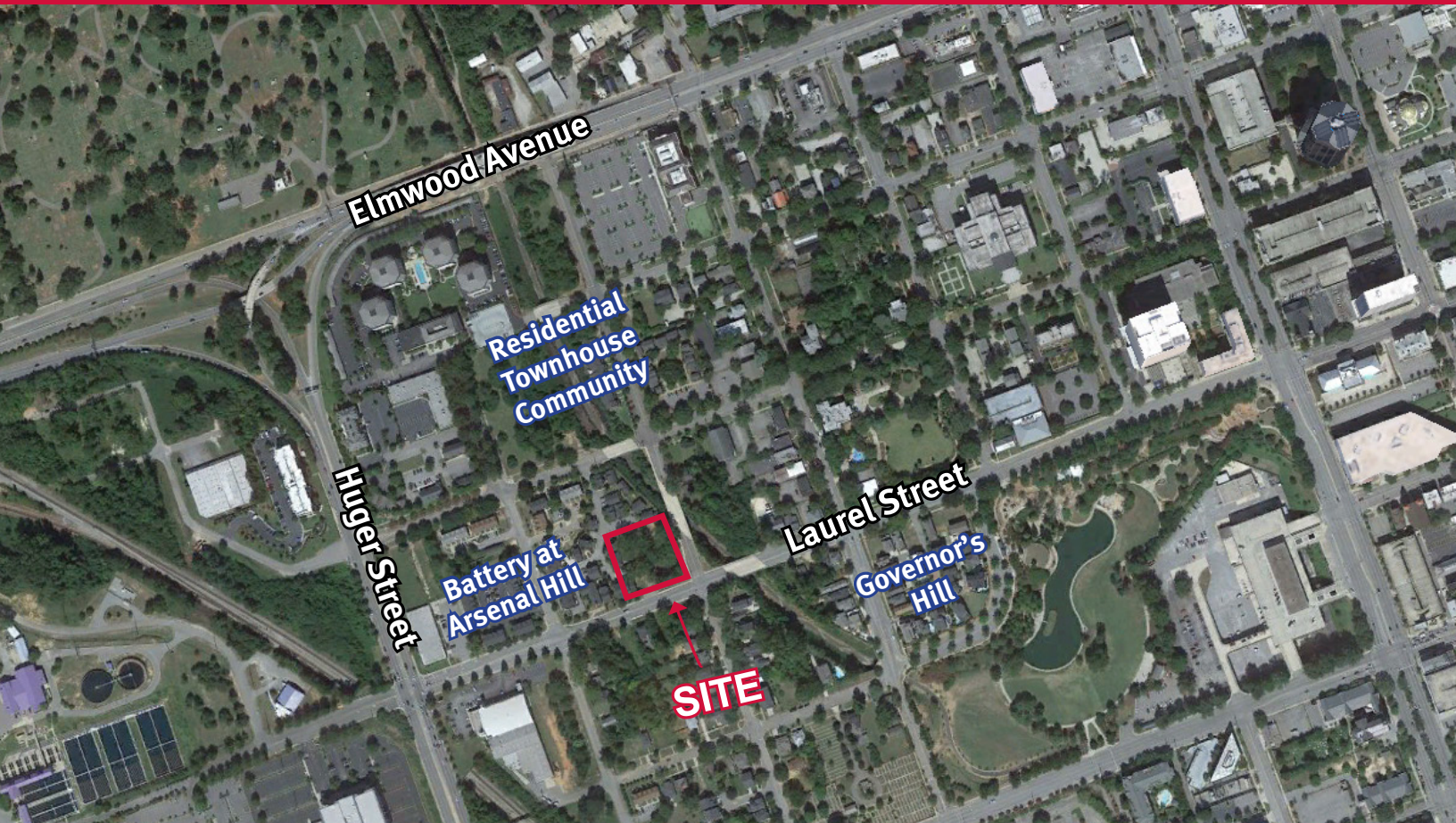
Wayne T. Smith

803.360.7950 wsmith@wilsonkibler.com

CORNER OF LAUREL & WAYNE STREET

631 Laurel Street

Downtown Columbia, South Carolina



DEMOGRAPHICS	1-MI.	3-MI.	5-MI.
2017 Population	4,332	81,743	171,147
2017 Households	2,236	33,824	73,053
2017 Average Income	\$67,751	\$55,214	\$59,000

Newmark
Wilson Kibler

1111 Laurel Street, Columbia, SC 29201 T 803.779.8600 www.wilsonkibler.com

Brooks Owings

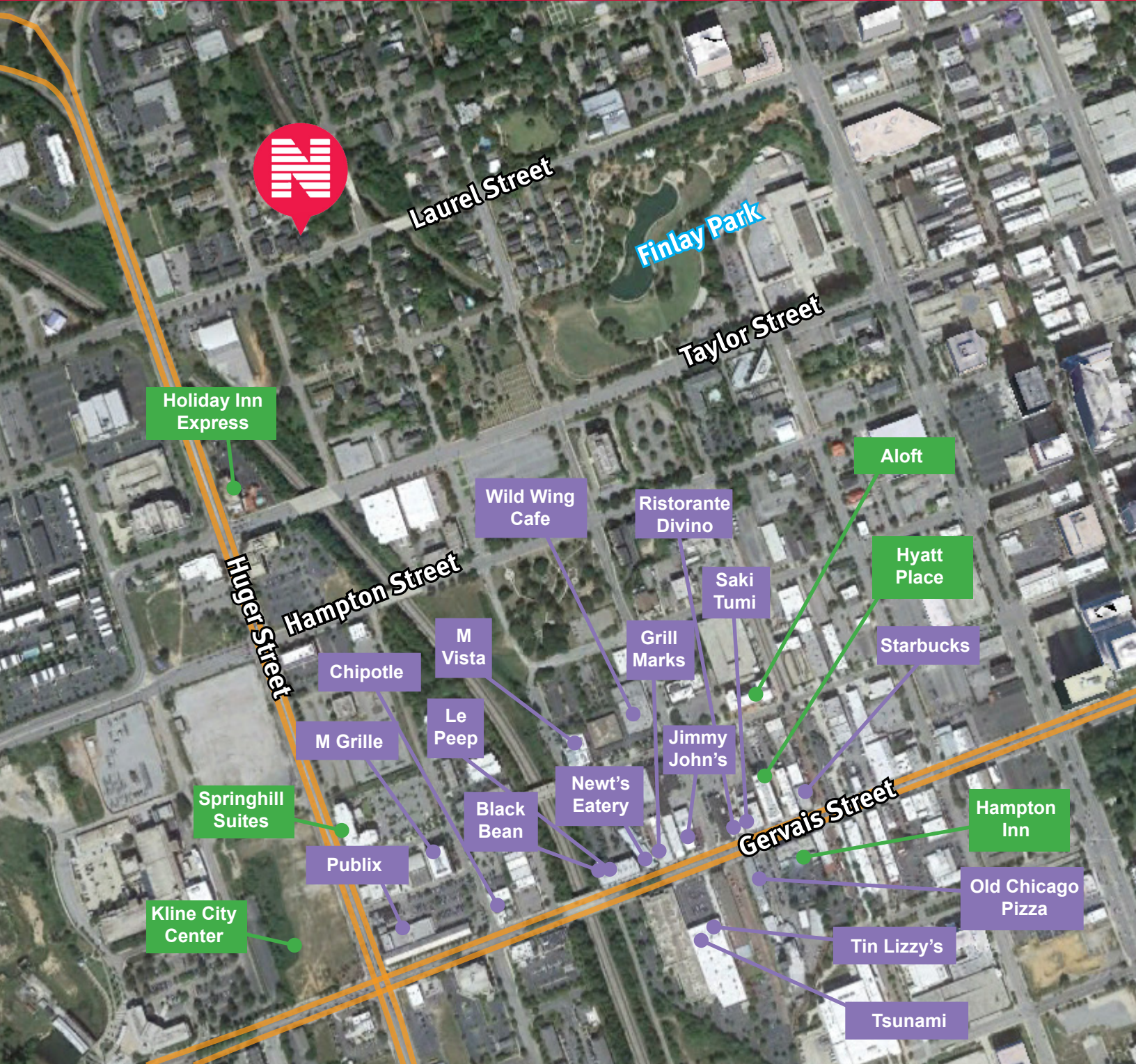
803.255.8642 brooks.owings@wilsonkibler.com

Wayne T. Smith

803.360.7950 wsmith@wilsonkibler.com

CORNER OF LAUREL & WAYNE STREET

631 Laurel Street
Columbia, South Carolina



Newmark
Wilson Kibler

1111 Laurel Street, Columbia, SC 29201 T 803.779.8600 www.wilsonkibler.com

Brooks Owings
803.255.8642 brooks.owings@wilsonkibler.com

Wayne T. Smith
803.360.7950 wsmith@wilsonkibler.com