

# For Sale or Lease

## 25329 74th Avenue South

Kent, WA

Approx 25,600 SF total  
freestanding building

Approx 4,300 SF two story  
office of which ± 2,000 SF is  
mezzanine office

Divisible to 15,600 SF with  
3,300 SF office or 10,000 SF  
with 1,000 SF office

1.34 acre site

Excellent exposure along  
SR-167

24' clear height

4 dock-high doors

3 grade-level doors

Zoning: M2 (city of Kent)

Heavy power - former cabinet  
manufacturing shop

Sale price: \$2,300,00.00  
(\$90.00 PSF)

Lease rate: \$0.34 shell  
\$0.75 office add-on



### Location



### Contact

**Peter Wooding**

206.248.7301

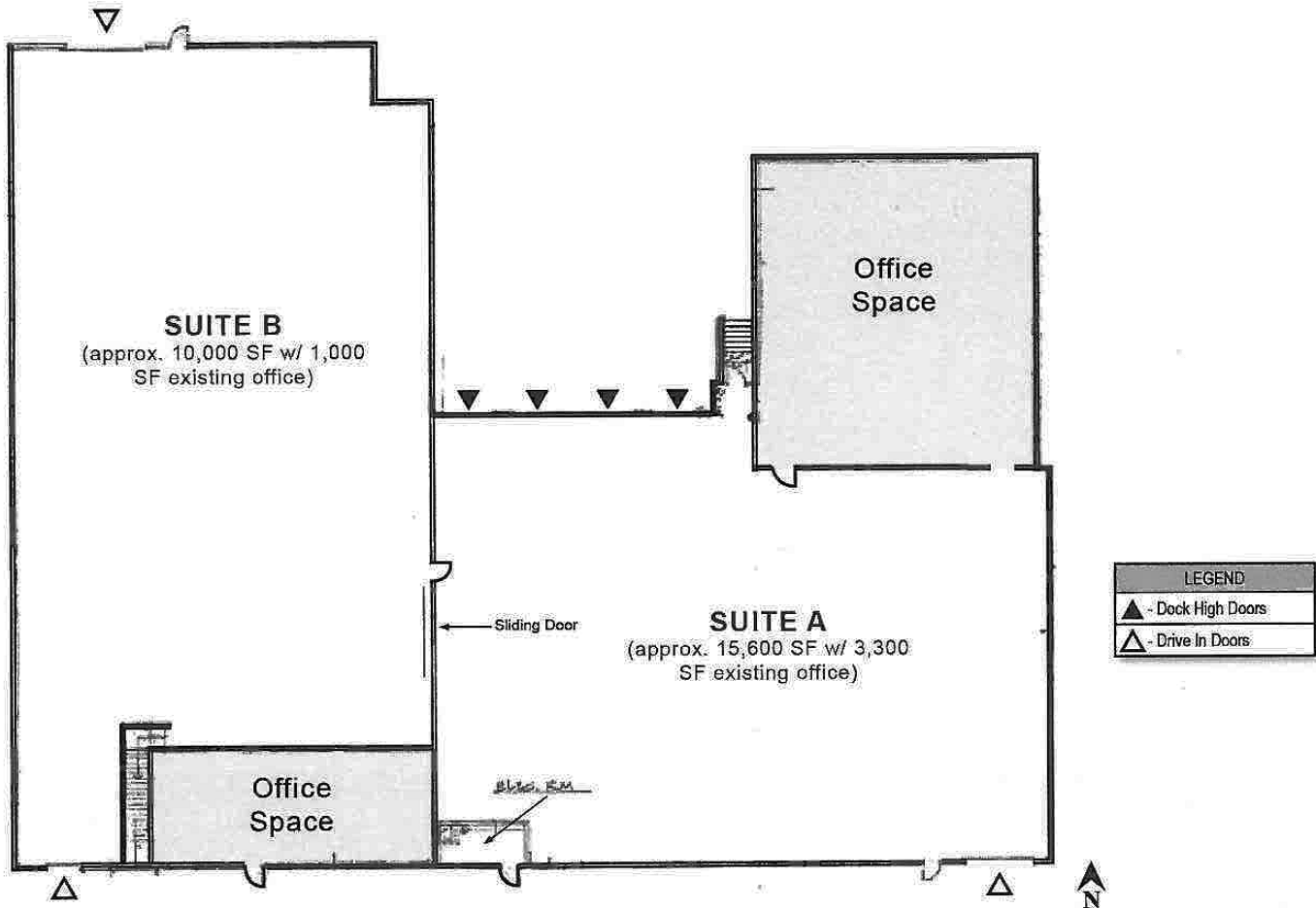
[pwooding@kiddermathews.com](mailto:pwooding@kiddermathews.com)

**Christopher J. Corr, SIOR**

206.248.7324

[ccorr@kiddermathews.com](mailto:ccorr@kiddermathews.com)

## 25329 74th Avenue South



### Contact

**Peter Wooding**  
206.248.7301  
pwooding@kiddermathews.com

**Christopher J. Corr, SIOR**  
206.248.7324  
ccorr@kiddermathews.com