

# Chamber of Commerce Building

31919 1st Ave S, Federal Way, WA



**FOR LEASE**

1,000 - 4,752 square feet located on the corner  
of 320th & 1st Avenue South

**Mark Clirehugh, SIOR, CCIM**  
253.722.1416  
markc@kiddermathews.com

**Will Frame**  
253.722.1412  
wframe@kiddermathews.com

**Drew Frame**  
253.722.1433  
dframe@kiddermathews.com

[kiddermathews.com](http://kiddermathews.com)

**km Kidder Mathews**



# Chamber of Commerce Building

31919 1st Ave S, Federal Way, WA

## Features

Suite 100 - 3,425 SF

Suite 200 - 4,752 SF

Can demise to 1,000 SF

\$17.50 PSF full service

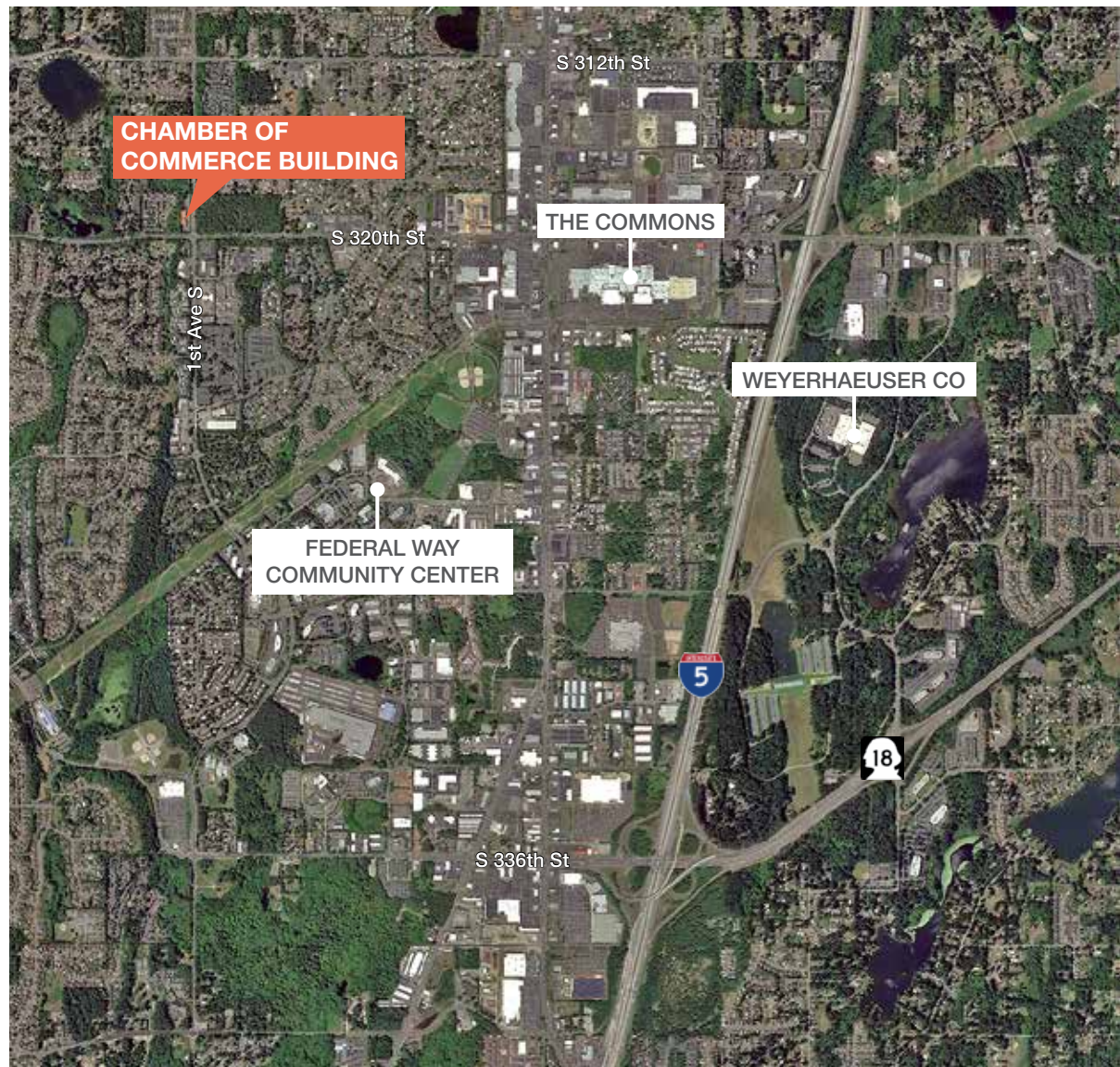
Great corner location on 320th & 1st Avenue South

Ample free surface parking

Ready-to-go office build-outs

### DEMOGRAPHICS

	1 mile	3 miles	5 miles
Population	18,841	108,813	183,465
Median Household Income	\$59,768	\$66,539	\$70,315



**Mark Clirehugh, SIOR, CCIM**  
253.722.1416  
markc@kiddermathews.com

**Will Frame**  
253.722.1412  
wframe@kiddermathews.com

**Drew Frame**  
253.722.1433  
dframe@kiddermathews.com

[kiddermathews.com](http://kiddermathews.com)



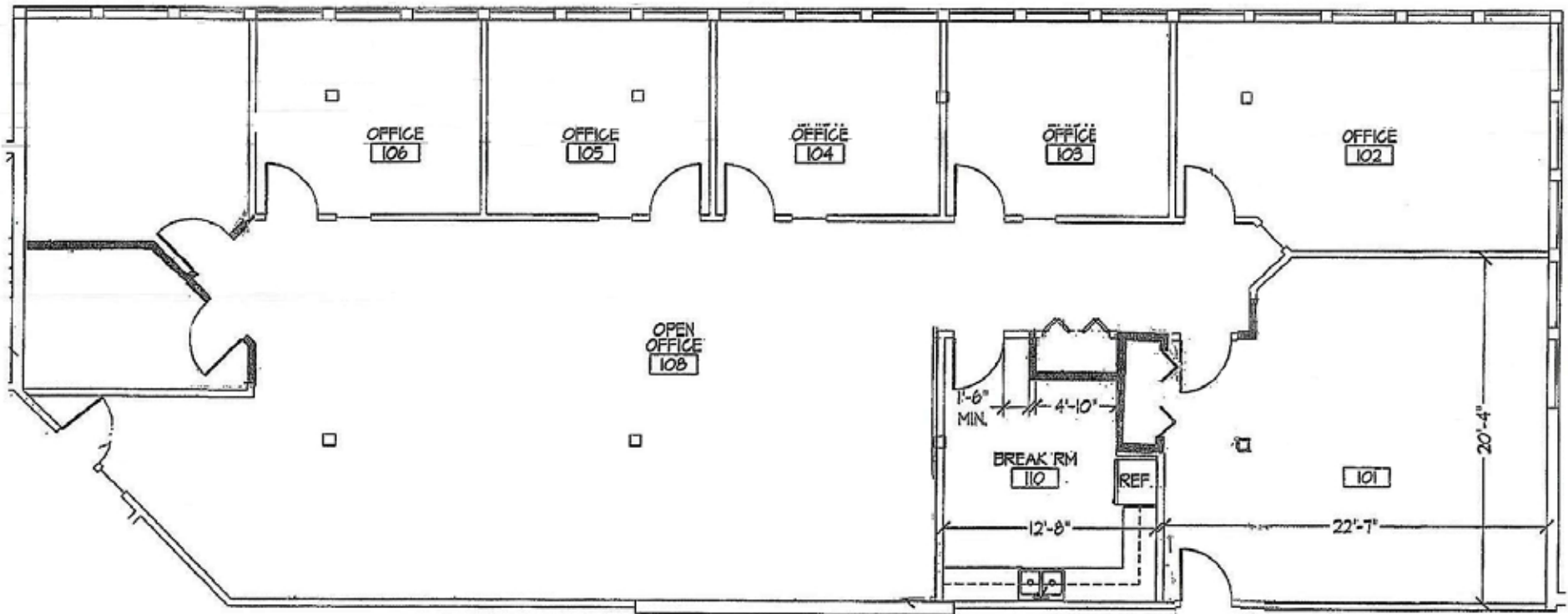
This information supplied herein is from sources we deem reliable. It is provided without any representation, warranty or guarantee, expressed or implied as to its accuracy. Prospective Buyer or Tenant should conduct an independent investigation and verification of all matters deemed to be material, including, but not limited to, statements of income and expenses. Consult your attorney, accountant, or other professional advisor.

# Chamber of Commerce Building

31919 1st Ave S, Federal Way, WA

## Floor Plans

### SUITE 100



**Mark Clirehugh, SIOR, CCIM**  
253.722.1416  
markc@kiddermathews.com

**Will Frame**  
253.722.1412  
wframe@kiddermathews.com

**Drew Frame**  
253.722.1433  
dframe@kiddermathews.com

[kiddermathews.com](http://kiddermathews.com)



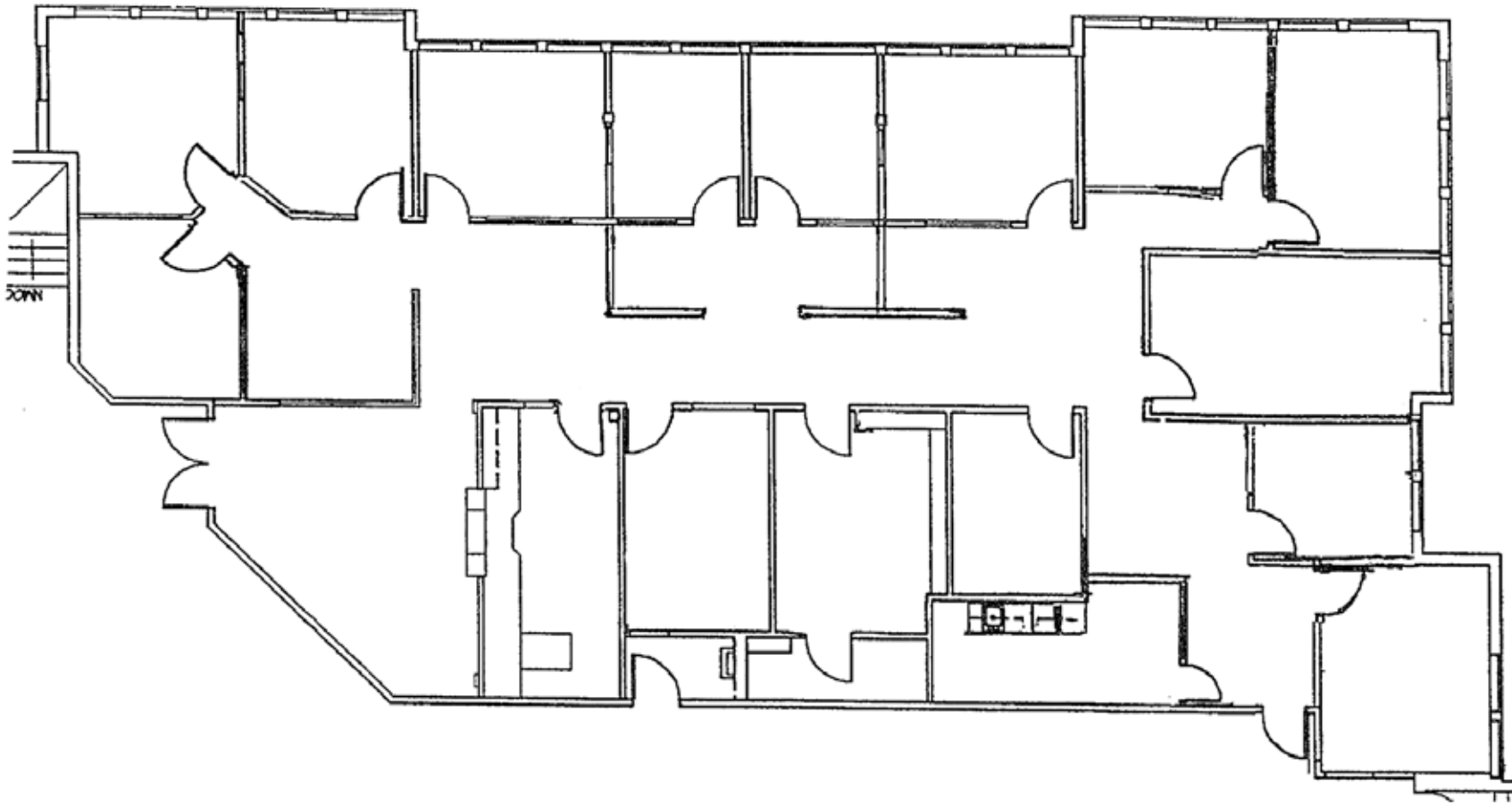
This information supplied herein is from sources we deem reliable. It is provided without any representation, warranty or guarantee, expressed or implied as to its accuracy. Prospective Buyer or Tenant should conduct an independent investigation and verification of all matters deemed to be material, including, but not limited to, statements of income and expenses. Consult your attorney, accountant, or other professional advisor.

# Chamber of Commerce Building

31919 1st Ave S, Federal Way, WA

## Floor Plans

### SUITE 200



**Mark Clirehugh, SIOR, CCIM**  
253.722.1416  
markc@kiddermathews.com

**Will Frame**  
253.722.1412  
wframe@kiddermathews.com

**Drew Frame**  
253.722.1433  
dframe@kiddermathews.com

[kiddermathews.com](http://kiddermathews.com)



This information supplied herein is from sources we deem reliable. It is provided without any representation, warranty or guarantee, expressed or implied as to its accuracy. Prospective Buyer or Tenant should conduct an independent investigation and verification of all matters deemed to be material, including, but not limited to, statements of income and expenses. Consult your attorney, accountant, or other professional advisor.