



## 13214 Plank Road

13214 Plank Road, Baker, Louisiana 70714

### Property Highlights

- Affordable Office/Warehouse
- Potential Retail Storefront
- Dock & Grade Level Doors
- Excess Land For Potential Expansion

### Sale Price

\$360,000



For more information

### Evan Scroggs, CCIM

O: 225 297 7415 | C: 225 241 8616  
evanscrogs@latterblum.com

### Dex Shill

O: 225 297 7874 | C: 225 284 9092  
dexshill@latterblum.com

CALL OR EMAIL FOR MORE INFORMATION

NO WARRANTY OR REPRESENTATION, EXPRESS OR IMPLIED, IS MADE AS TO THE ACCURACY OF THE INFORMATION CONTAINED HEREIN, AND THE SAME IS SUBMITTED SUBJECT TO ERRORS, OMISSIONS, CHANGE OF PRICE, RENTAL OR OTHER CONDITIONS, PRIOR SALE, LEASE OR FINANCING, OR WITHDRAWAL WITHOUT NOTICE, AND OF ANY SPECIAL LISTING CONDITIONS IMPOSED BY OUR PRINCIPALS NO WARRANTIES OR REPRESENTATIONS ARE MADE AS TO THE CONDITION OF THE PROPERTY OR ANY HAZARDS CONTAINED THEREIN ARE ANY TO BE IMPLIED. LICENSED IN LOUISIANA.

1700 City Farm Drive  
Baton Rouge, LA 70806  
225 295 0800 tel  
[latterblum.com](http://latterblum.com)

November 23, 2020

# Executive Summary



SALE PRICE: \$360,000

PRICE PER SF: \$33.10/SF

LOT SIZE: 4.75 Acres

BUILDING SIZE: 10,877 SF

GRADE LEVEL DOORS: 1

DOCK HIGH DOORS: 1

MARKET: Baton Rouge MSA

SUB MARKET: Baker

CROSS STREETS: Plank Road

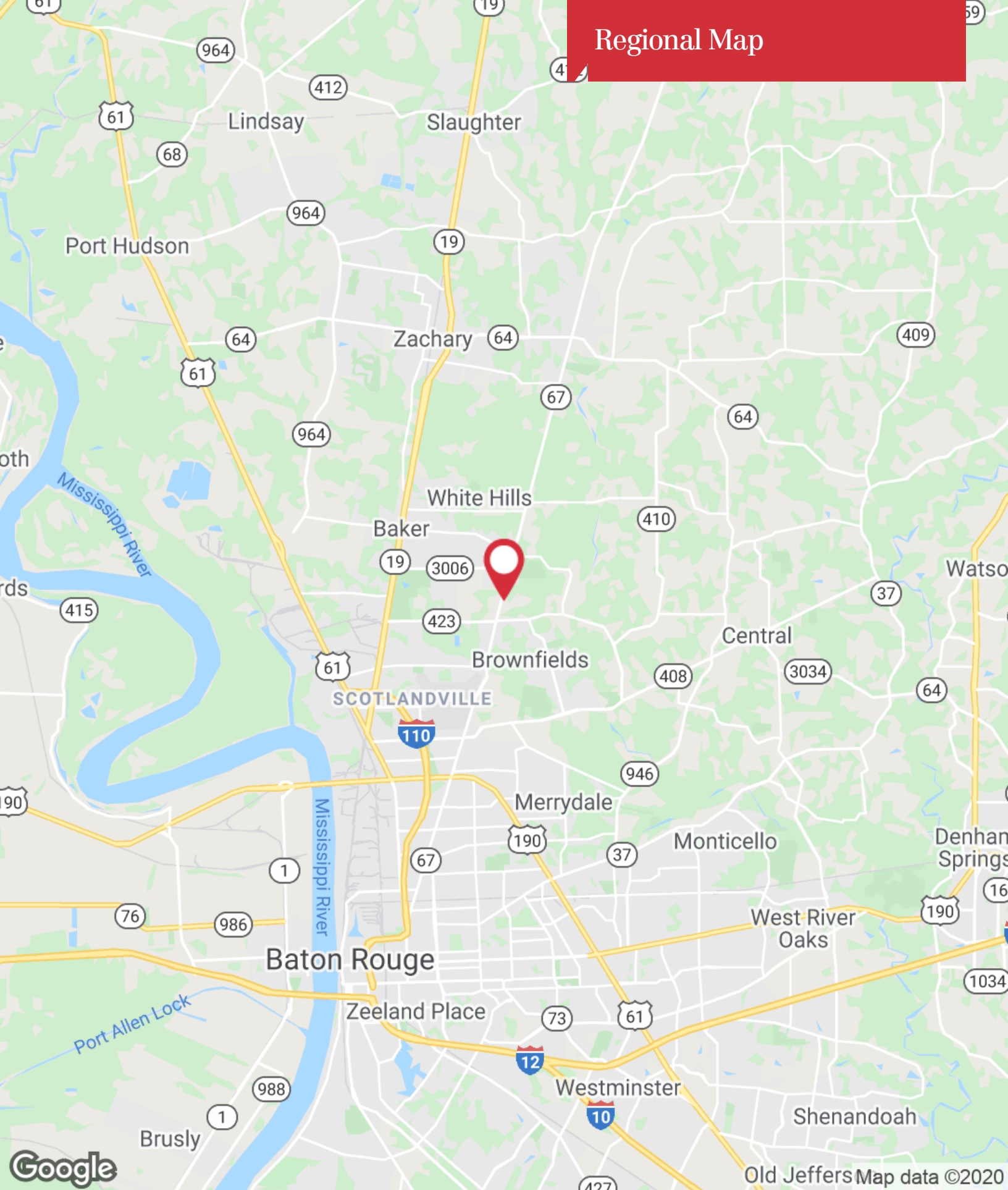


## DEMOGRAPHICS

| STATS    | POPULATION | AVG. HH INCOME |
|----------|------------|----------------|
| 1 MILE   | 3,588      | \$55,277       |
| 5 MILES  | 78,019     | \$47,464       |
| 10 MILES | 277,816    | \$54,243       |

\* Figures shown represent estimates

# Regional Map



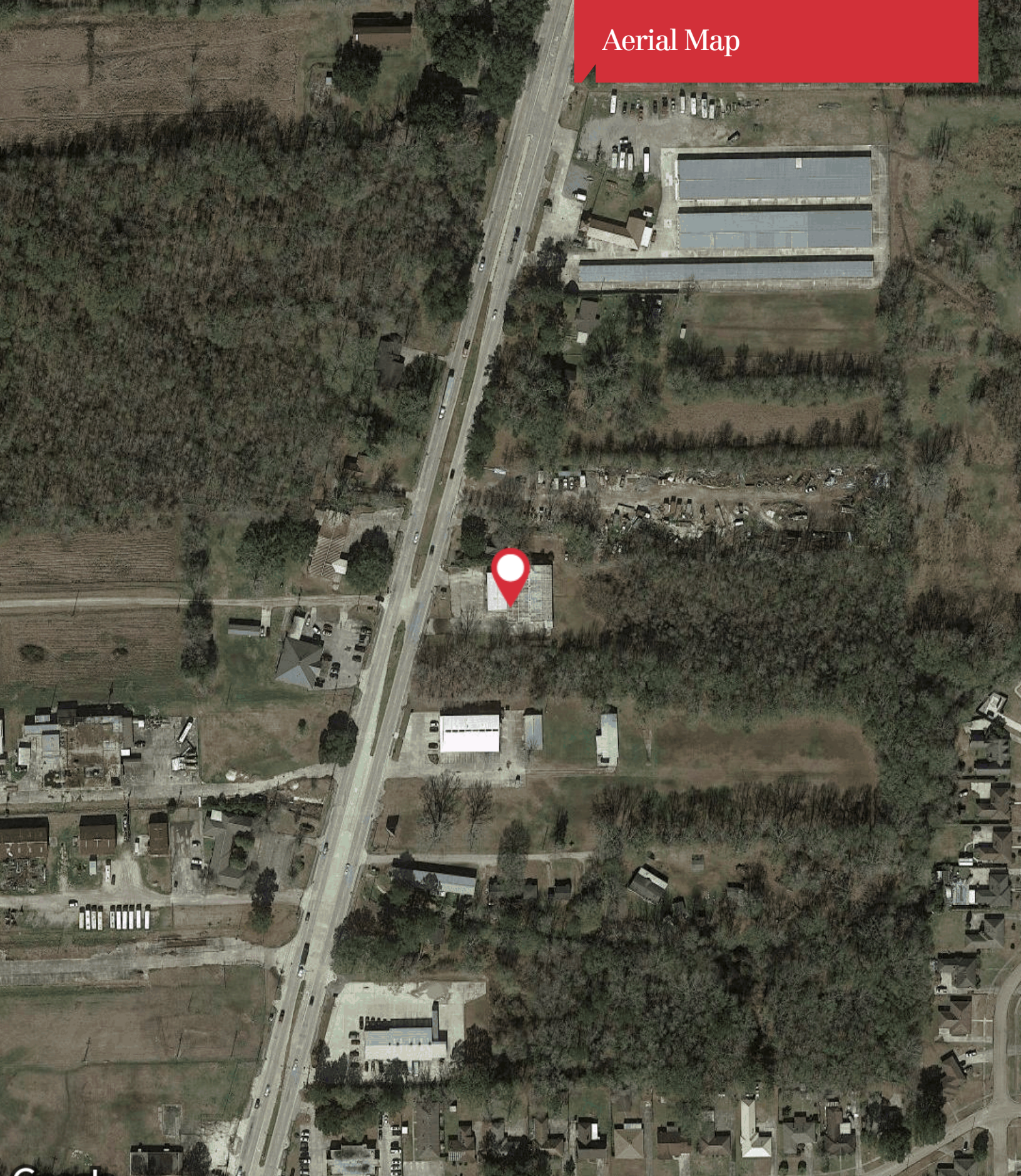
1700 City Farm Drive  
Baton Rouge, LA 70806  
225 295 0800 tel  
[latterblum.com](http://latterblum.com)

# Location Maps



1700 City Farm Drive  
Baton Rouge, LA 70806  
225 295 0800 tel  
[latterblum.com](http://latterblum.com)

# Aerial Map



Google

Imagery ©2020 Maxar Technologies, U.S. Geological Survey, USDA Farm Service Agency

**NAI**Latter&Blum

1700 City Farm Drive  
Baton Rouge, LA 70806  
225 295 0800 tel  
[latterblum.com](http://latterblum.com)