

TEMECULA CORPORATE PLAZA CENTER OFFICE SUITE FOR LEASE

27450 YNEZ ROAD - TEMECULA, CA

**RATE
INCLUDES
DAILY
JANITORIAL**



PROPERTY HIGHLIGHTS:

- 2,060 Sq. Ft. Suite Available
- Class A Office Building
- Centrally Located
- Immediate Occupancy
- Restaurants Within Easy Walking Distance



JIM NADAL, CCIM, SIOR • 951.445.4520 • jnadal@leetemecula.com • DRE #01040679

TEMECULA CORPORATE PLAZA CENTER OFFICE SUITE FOR LEASE

27450 YNEZ ROAD - TEMECULA, CA

AVAILABILITY			
SUITE	RENTABLE SQ. FT.	MONTHLY RENTAL RATE*	COMMENTS
109	2,060	\$1.95 PSF	Reception, 6 private offices, breakroom.

Rev: 03/07/19

***MONTHLY RATES ARE FULL SERVICE, MODIFIED GROSS.
LANDLORD PROVIDES IN-SUITE JANITORIAL SERVICE; TENANT RESPONSIBLE FOR ITS OWN SEPARATE METERED ELECTRIC.**

JIM NADAL, CCIM, SIOR • 951.445.4520 • jnadal@leetemecula.com • DRE #01040679

TEMECULA CORPORATE PLAZA CENTER OFFICE SUITE FOR LEASE

27450 YNEZ ROAD - TEMECULA, CA



JIM NADAL, CCIM, SIOR • 951.445.4520 • jnadal@leetemecula.com • DRE #01040679

TEMECULA CORPORATE PLAZA CENTER OFFICE SUITE FOR LEASE

27450 YNEZ ROAD - TEMECULA, CA



JIM NADAL, CCIM, SIOB • 951.445.4520 • jnadal@leetemecula.com • DRE #01040679

TEMECULA CORPORATE PLAZA CENTER OFFICE SUITE FOR LEASE

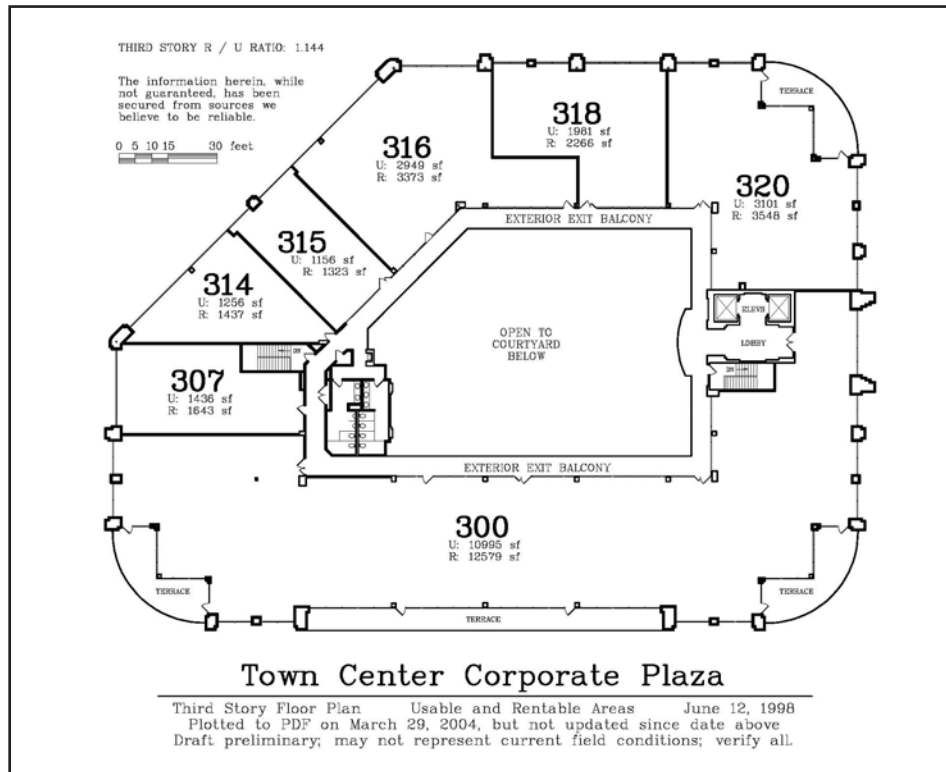
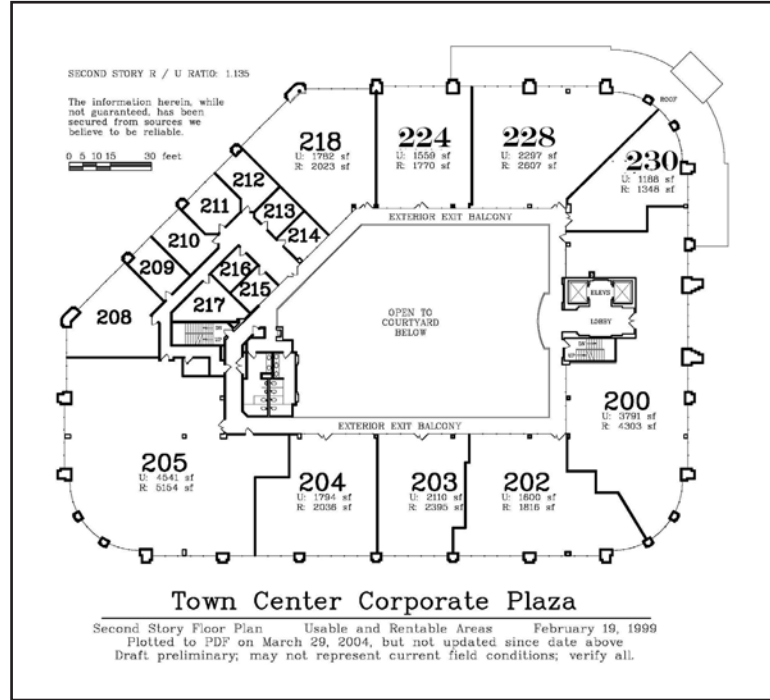
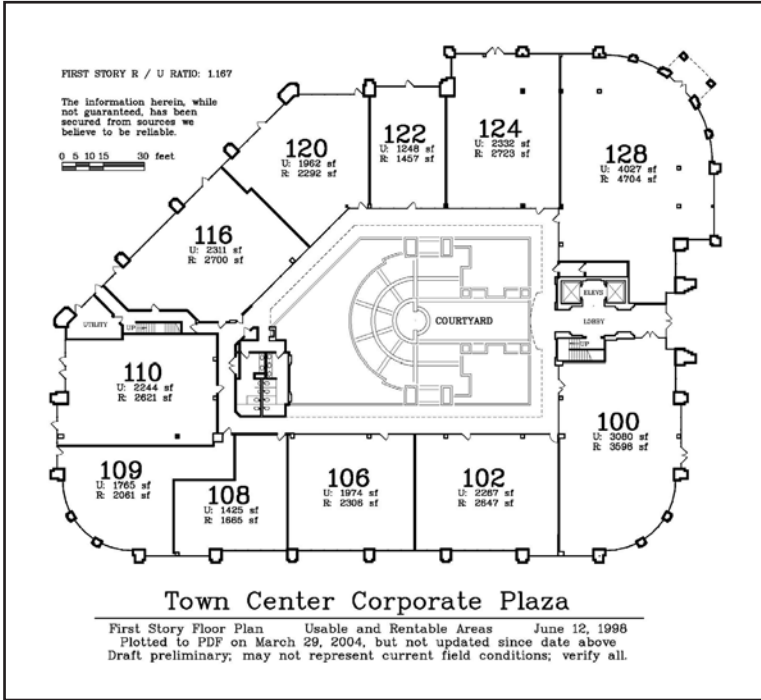
27450 YNEZ ROAD - TEMECULA, CA



JIM NADAL, CCIM, SIOB • 951.445.4520 • jnadal@leetemecula.com • DRE #01040679

TEMECULA CORPORATE PLAZA CENTER OFFICE SUITE FOR LEASE

27450 YNEZ ROAD - TEMECULA, CA



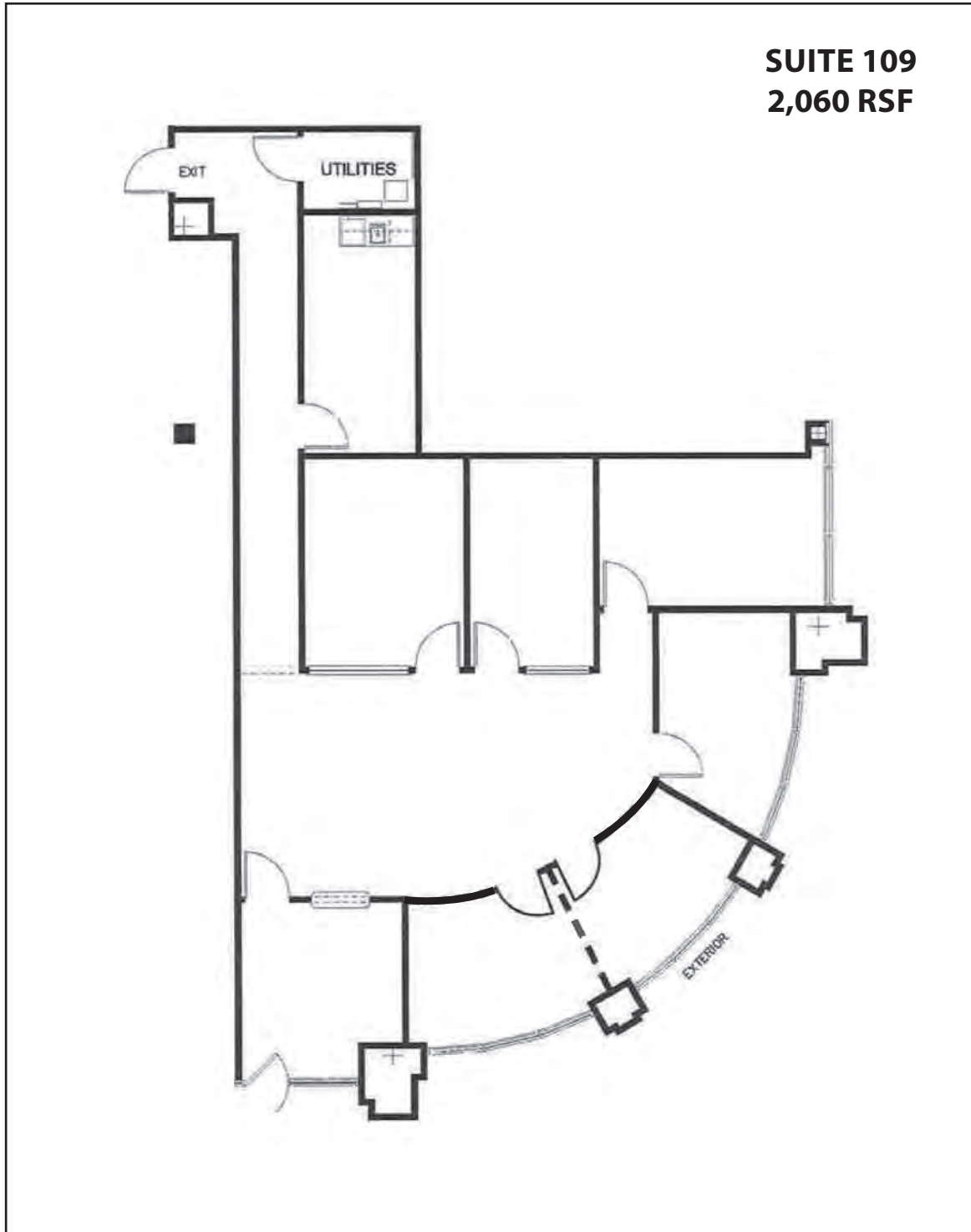
JIM NADAL, CCIM, SIOR • 951.445.4520 • jnadal@leetemecula.com • DRE #01040679

No warranty or representation has been made to the accuracy of the foregoing information. Terms of sale or lease and availability are subject to change or withdrawal without notice.

Lee & Associates Commercial Real Estate Services, Inc. - Riverside. 25240 Hancock Avenue, Suite 100 - Murrieta, CA 92562 | Corporate ID# 01048055

TEMECULA CORPORATE PLAZA CENTER OFFICE SUITE FOR LEASE

27450 YNEZ ROAD - TEMECULA, CA



JIM NADAL, CCIM, SIOR • 951.445.4520 • jnadal@leetemecula.com • DRE #01040679