

FOR LEASE

23,254 SF Available

EAST ORLANDO MEDICAL SURGICAL PLAZA

Florida Hospital East Orlando Campus

258 S. Chickasaw Trail, Orlando, FL 32825



Exclusively Leased By:

Jason Bantel, CCIM

Senior Vice President / Principal

office 321.281.8509

fax 321.281.8519

jbantel@lee-associates.com

4700 Millenia Blvd
Suite 200

Orlando, FL 32839

ph: 321.281.8500

fx: 321.281.8519

www.lee-associates.com



COMMERCIAL REAL ESTATE SERVICES

LOCAL EXPERTISE. NATIONAL REACH. WORLD CLASS.



Property Overview

A three-story, Class A, 56,903-square foot medical office building, East Orlando Medical Surgical Plaza is directly across from the prominent, 225-bed community hospital featuring a newly renovated Emergency Department. The medical office space can be customized to suit your practices's particular needs. Suites are available from 3,334 SF to 13,169 SF.

- Part of the Aventist Health System
- Current tenants include Ambulatory Surgery Center, Orthopedics, and GI services
- Ample parking
- Other medical services on-site include an ambulatory surgery center and urology, reproduction and gastrointestinal specialists.
- Energy Star Rated
- Covered drop-off entrance

All information furnished regarding property for sale, rental or financing is from sources deemed reliable, but no warranty or representation is made to the accuracy thereof and the same is submitted to errors, omissions, change of price, rental or other conditions prior to sale, lease or financing or withdrawal without notice. No liability of any kind is to be imposed on the broker herein.

FOR LEASE

23,254 SF Available

East Orlando Medical Surgery Plaza

258 S. Chickasaw Trail, Orlando, FL 32825

Location Map



Exclusively Leased By:

Jason Bantel, CCIM

Senior Vice President / Principal

office 321.281.8509

fax 321.281.8519

jbantel@lee-associates.com

4700 Millenia Blvd
Suite 200
Orlando, FL 32839
ph: 321.281.8500
fx: 321.281.8519

www.lee-associates.com



COMMERCIAL REAL ESTATE SERVICES

LOCAL EXPERTISE. NATIONAL REACH. WORLD CLASS.



All information furnished regarding property for sale, rental or financing is from sources deemed reliable, but no warranty or representation is made to the accuracy thereof and the same is submitted to errors, omissions, change of price, rental or other conditions prior to sale, lease or financing or withdrawal without notice. No liability of any kind is to be imposed on the broker herein.

FOR LEASE

East Orlando Medical Surgery Plaza

258 S. Chickasaw Trail, Orlando, FL 32825

Floor Plan

First Floor

Suite 101 - 3,334 SF



Exclusively Leased By:

Jason Bantel, CCIM

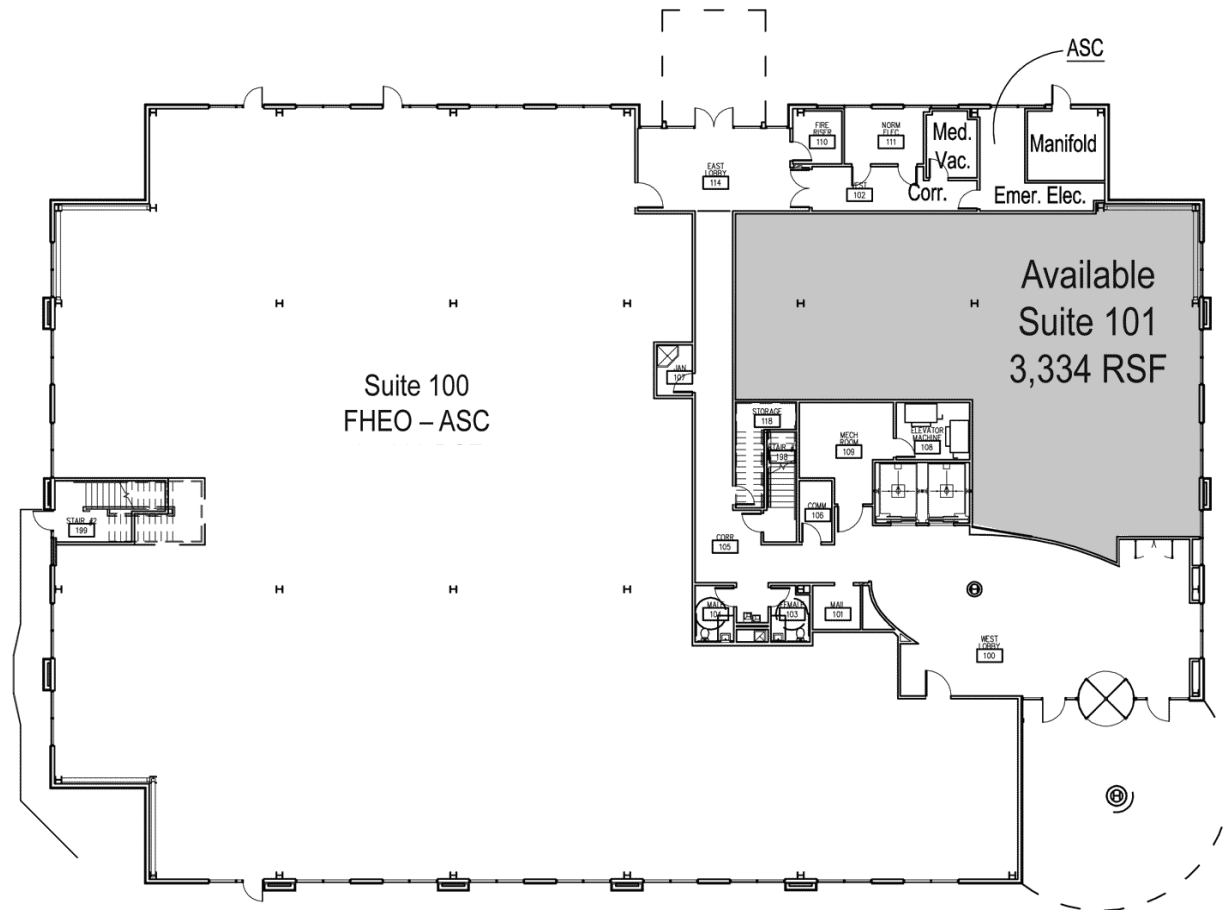
Senior Vice President / Principal

office 321.281.8509

fax 321.281.8519

jbantel@lee-associates.com

4700 Millenia Blvd
Suite 200
Orlando, FL 32839
ph: 321.281.8500
fx: 321.281.8519
www.lee-associates.com



All information furnished regarding property for sale, rental or financing is from sources deemed reliable, but no warranty or representation is made to the accuracy thereof and the same is submitted to errors, omissions, change of price, rental or other conditions prior to sale, lease or financing or withdrawal without notice. No liability of any kind is to be imposed on the broker herein.

LOCAL EXPERTISE. NATIONAL REACH. WORLD CLASS.

FOR LEASE

East Orlando Medical Surgery Plaza

258 S. Chickasaw Trail, Orlando, FL 32825

Floor Plan



Second Floor

Suite 202 - 13,169 SF

Exclusively Leased By:

Jason Bantel, CCIM

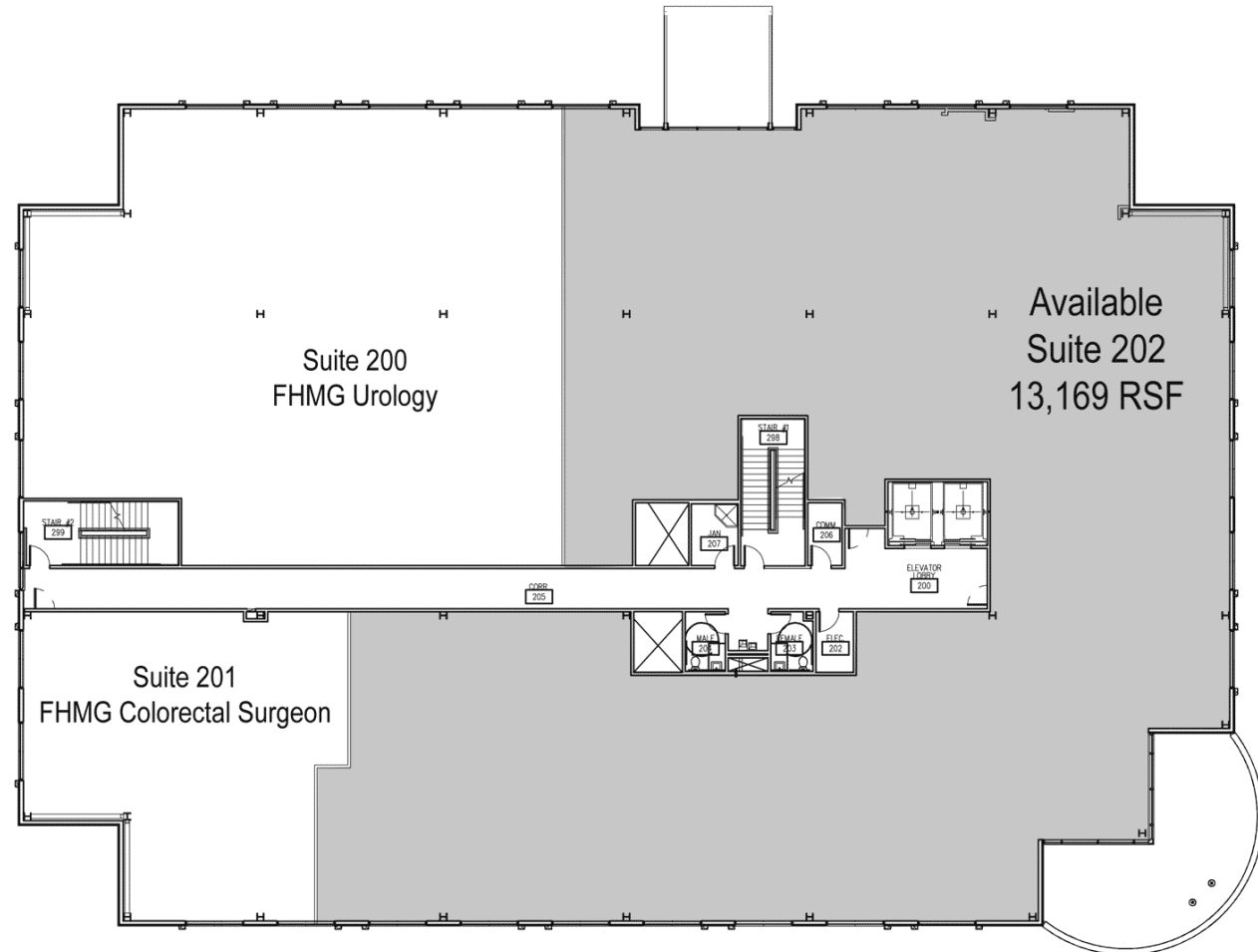
Senior Vice President / Principal

office 321.281.8509

fax 321.281.8519

jbantel@lee-associates.com

4700 Millenia Blvd
Suite 200
Orlando, FL 32839
ph: 321.281.8500
fx: 321.281.8519
www.lee-associates.com



All information furnished regarding property for sale, rental or financing is from sources deemed reliable, but no warranty or representation is made to the accuracy thereof and the same is submitted to errors, omissions, change of price, rental or other conditions prior to sale, lease or financing or withdrawal without notice. No liability of any kind is to be imposed on the broker herein.

FOR LEASE

East Orlando Medical Surgery Plaza

258 S. Chickasaw Trail, Orlando, FL 32825

Floor Plan



Exclusively Leased By:

Jason Bantel, CCIM

Senior Vice President / Principal

office 321.281.8509

fax 321.281.8519

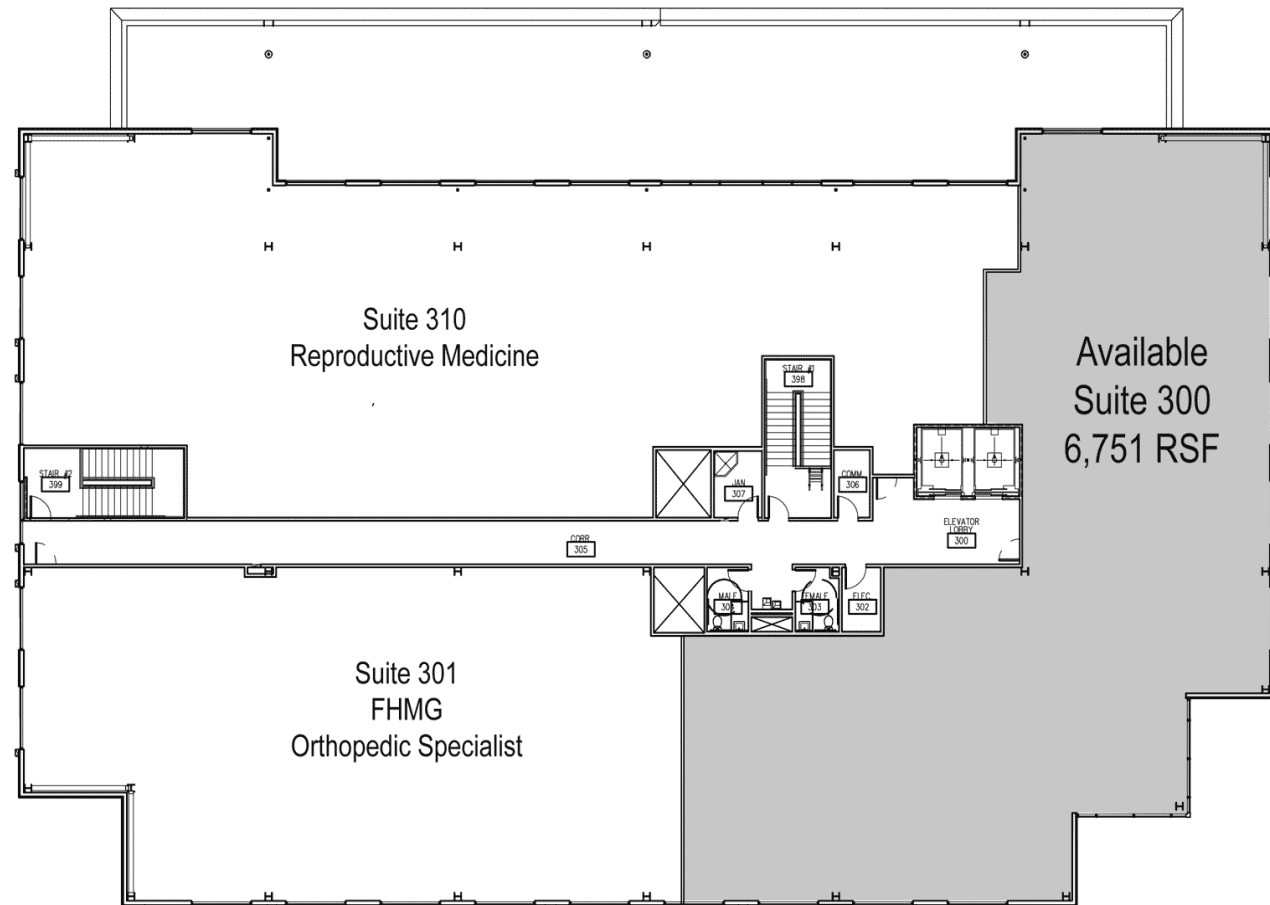
jbantel@lee-associates.com

4700 Millenia Blvd
Suite 200
Orlando, FL 32839
ph: 321.281.8500
fx: 321.281.8519
www.lee-associates.com



Third Floor

Suite 300 - 6,751 SF



All information furnished regarding property for sale, rental or financing is from sources deemed reliable, but no warranty or representation is made to the accuracy thereof and the same is submitted to errors, omissions, change of price, rental or other conditions prior to sale, lease or financing or withdrawal without notice. No liability of any kind is to be imposed on the broker herein.

LOCAL EXPERTISE. NATIONAL REACH. WORLD CLASS.