

1700 Medical Center

1700 116th Ave NE,
Bellevue, WA

8,358 RSF available

Quality Medical office space

Located just north of Children's Hospital, Overlake Medical Center, and Group Health

High visibility building with monument signage available

Available March 1, 2014

Ample surface and covered parking

Contact agent to arrange showing



Location

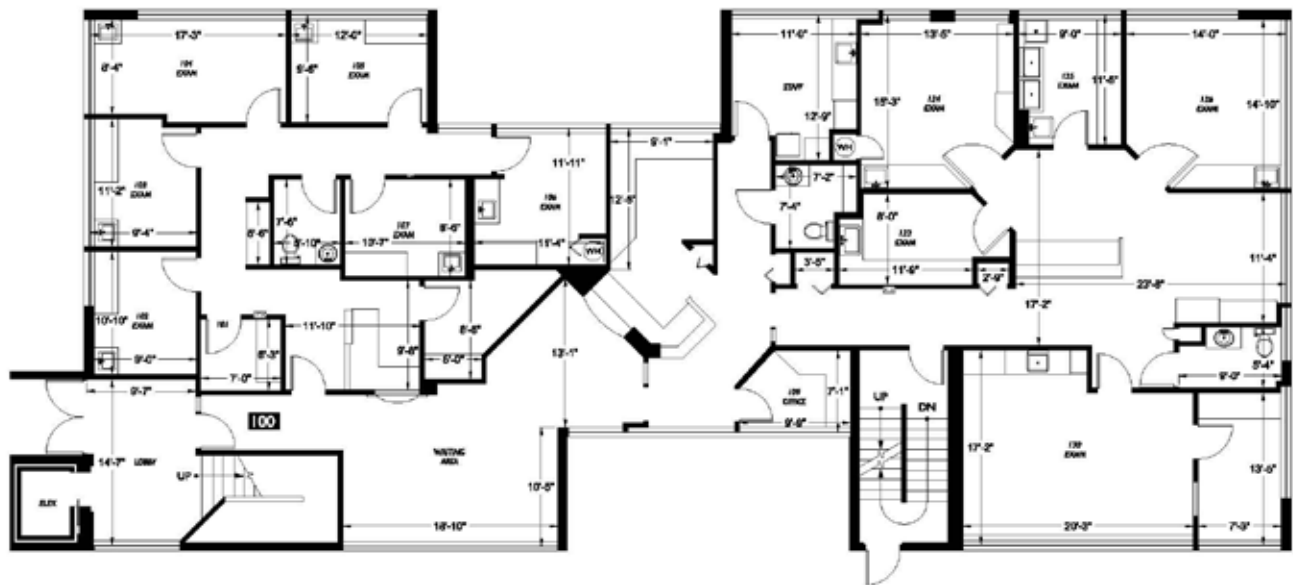


Contact

Keith Honsberger
425.450.1107
keithh@kiddermathews.com

1700 Medical Center

First Floor



Second Floor



Contact

Keith Honsberger

425.450.1107

keithh@kiddermathews.com