



**PARK PLACE
OFFICE BUILDING**

SCAN HERE!



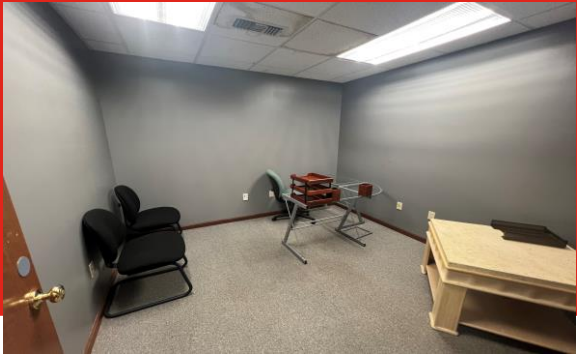
CALEB ANTHONIS

Phone: 314.647.6611 ext. 126
Caleb@ManorRealEstate.com

**8 PARK PLACE
SWANSEA, IL 62226
3,000 S.F. | \$14.00/S.F. F.S.G.**

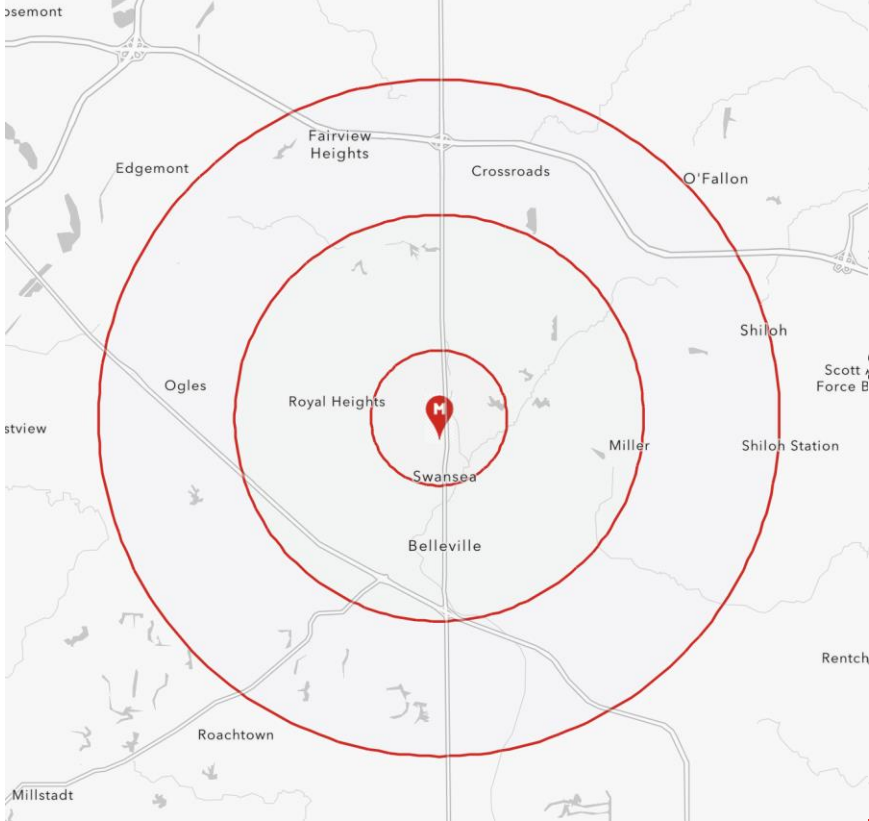
FOR LEASE

PROPERTY INFORMATION



- 1,060-3,000 S.F. OF OFFICE SPACE AVAILABLE
- SEVEN PRIVATE OFFICES, 2 LARGE OPEN WORK AREAS, BUILT-IN CUBICLES, KITCHENETTE AND MULTIPLE STORAGE CLOSETS
- LOCATED IN A WELL-MAINTAINED PRIVATE OFFICE PARK
- CURRENTLY OFFERING 2 MONTHS OF FREE RENT FOR A THREE-YEAR LEASE TERM
- TENANT IMPROVEMENT ALLOWANCE AVAILABLE FOR QUALIFIED TENANTS

DEMOGRAPHICS		1 MILE	3 MILES	5 MILES
POPULATION		6,902	65,778	112,997
HOUSEHOLDS		3,051	28,671	48,490
AVERAGE HH INCOME		\$101,112	\$86,993	\$93,696



SCAN HERE!



CALEB ANTHONIS
 Phone: 314.647.6611 ext. 126
Caleb@ManorRealEstate.com

**8 PARK PLACE
 SWANSEA, IL 62226
 3,000 S.F. | \$14.00/S.F. F.S.G.**