

**NOW DIVISIBLE & NEW LIGHTING!**



**2030<sup>SUITE 100</sup>  
FORTUNE DR.**

**±7,201 - ±18,106 SF R&D/OFFICE SPACE FOR LEASE**

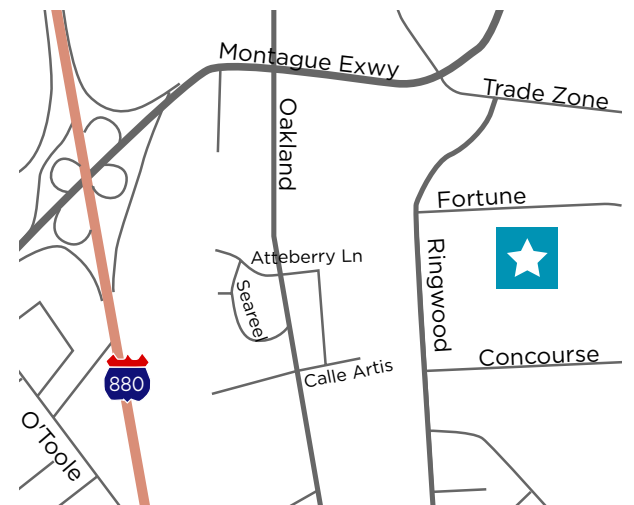
**2030 FORTUNE DRIVE**  
SUITE 100, SAN JOSE, CA

BRETT KROUSKUP | LIC #01904239  
CLARK STEELE | LIC #01995379



## PROPERTY HIGHLIGHTS

- New Lighting & Restrooms Complete!
- Fronts Fortune Drive
- ±7,201 - ±18,106 RSF
- Warehouse Space
- 14<sup>1/2</sup>'-16'+ Clear Height
- HVAC Lab Space
- 600 - 1,000 Amps 277/480V
- 2 Grade Level Doors
- Building Signage Available
- Monument Signage Possible
- TI's Available for New Tenant

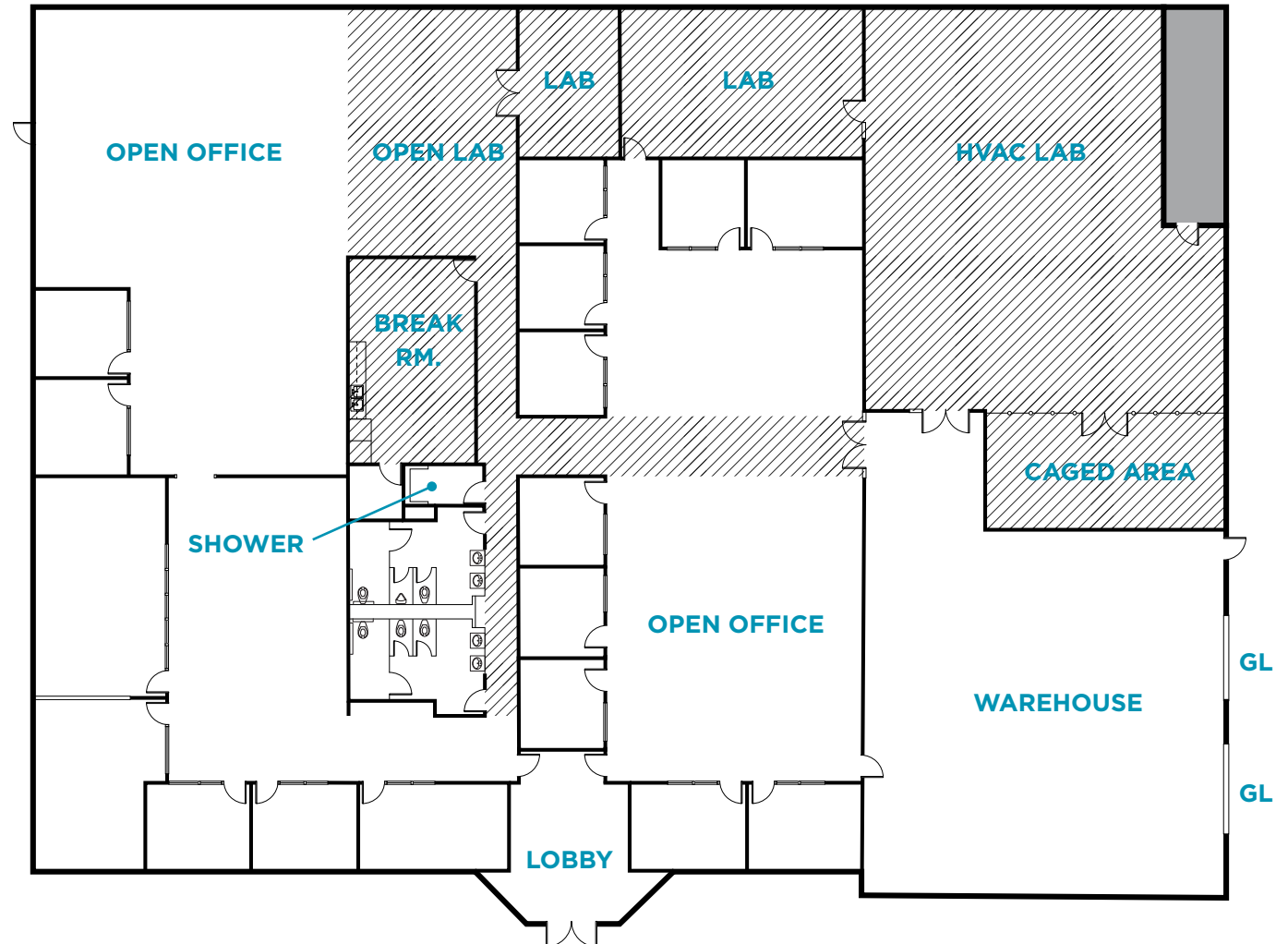




# FLOOR PLAN

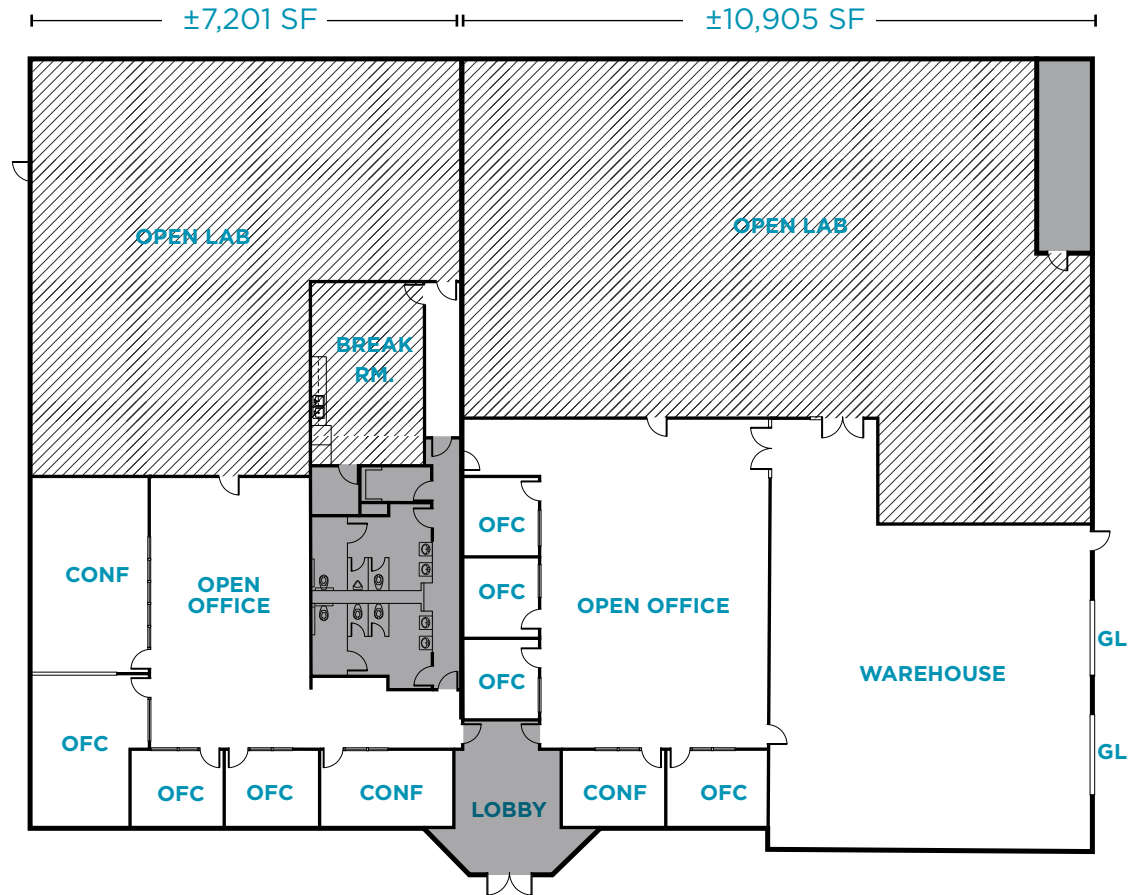
±18,106 SF

- New Lighting Installed
- New Restrooms Complete
- Secured Lobby
- ±14 Offices
- ±3 Conference Rooms
- Large Warehouse Area
- Clear Height: ±16'+
- ±600 - ±1,000 Amps
- HVAC Lab with Drop Power
- 2 Grade Level Doors
- 2 Drop Ceiling VCT Labs
- In-Suite Shower
- Large Break Room
- Building Signage Available
- Ample Parking
- Secured Outdoor Storage
- Equipment Pads Possible



# HYPOTHETICAL FLOOR PLAN

- Excellent Glass Line
- Ample Lab Area
- Large Breakroom
- 3 Offices
- 2 Conference Room
- Open Office Space
- New Lighting



- Large Lab or Manufacturing Area
- 16'+ Clear Height WHS
- 2 Grade Level Doors
- 4 Offices
- 1 Conference Room
- Open Office Space
- New Lighting



# AMENITY MAP



**2030 FORTUNE**



**FOR MORE INFORMATION, PLEASE CONTACT:**

BRETT KROUSKUP

+1 408 615 3432

brett.krouskup@cushwake.com

LIC #01904239

CLARK STEELE

+1 408 436 3653

clark.steele@cushwake.com

LIC #01995379

[View Site Specific COVID-19 Prevention Plan](#)

