

Publix #1273 - Eureka Promenade

18280 SW 147th Avenue
Miami, FL 33187
Lat 25.601, Long -80.429

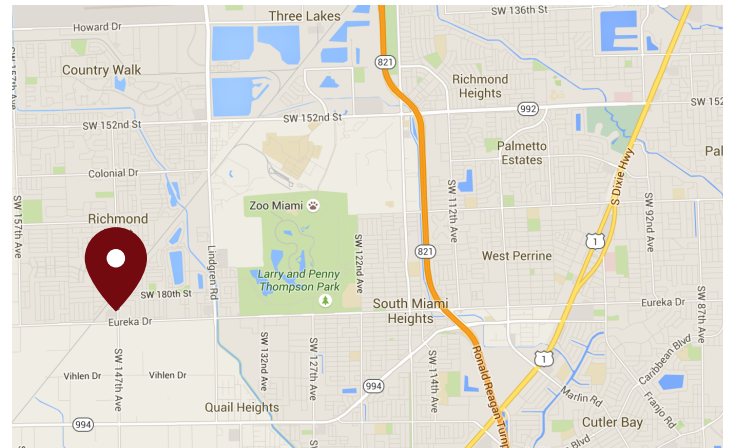
FOR LEASE



920 - 2,100 SF AVAILABLE

PROPERTY HIGHLIGHTS

- Miami-Dade Market
- Located off of Busy Southwest 14th Avenue
- Publix-Anchored Center
- Strong Demographics
- Excellent Daytime Traffic
- Traffic Count: 20,630 VPD



DEMOGRAPHICS	1 Mile	3 Miles	5 Miles
Total Population	18,281	87,007	223,488
Daytime Population	13,760	71,074	202,787
Total Households	4,937	24,170	66,619
Avg. HH Income	\$81,724	\$88,167	\$80,023

Data provided by Placer Labs Inc. (www.placer.ai) & Esri

Fernando Espino

Office: 305.342.4629 | Cell: 305.632.1809 | fespino@crossmanco.com
2655 South Le Jeune Road, Suite 908, Miami, FL

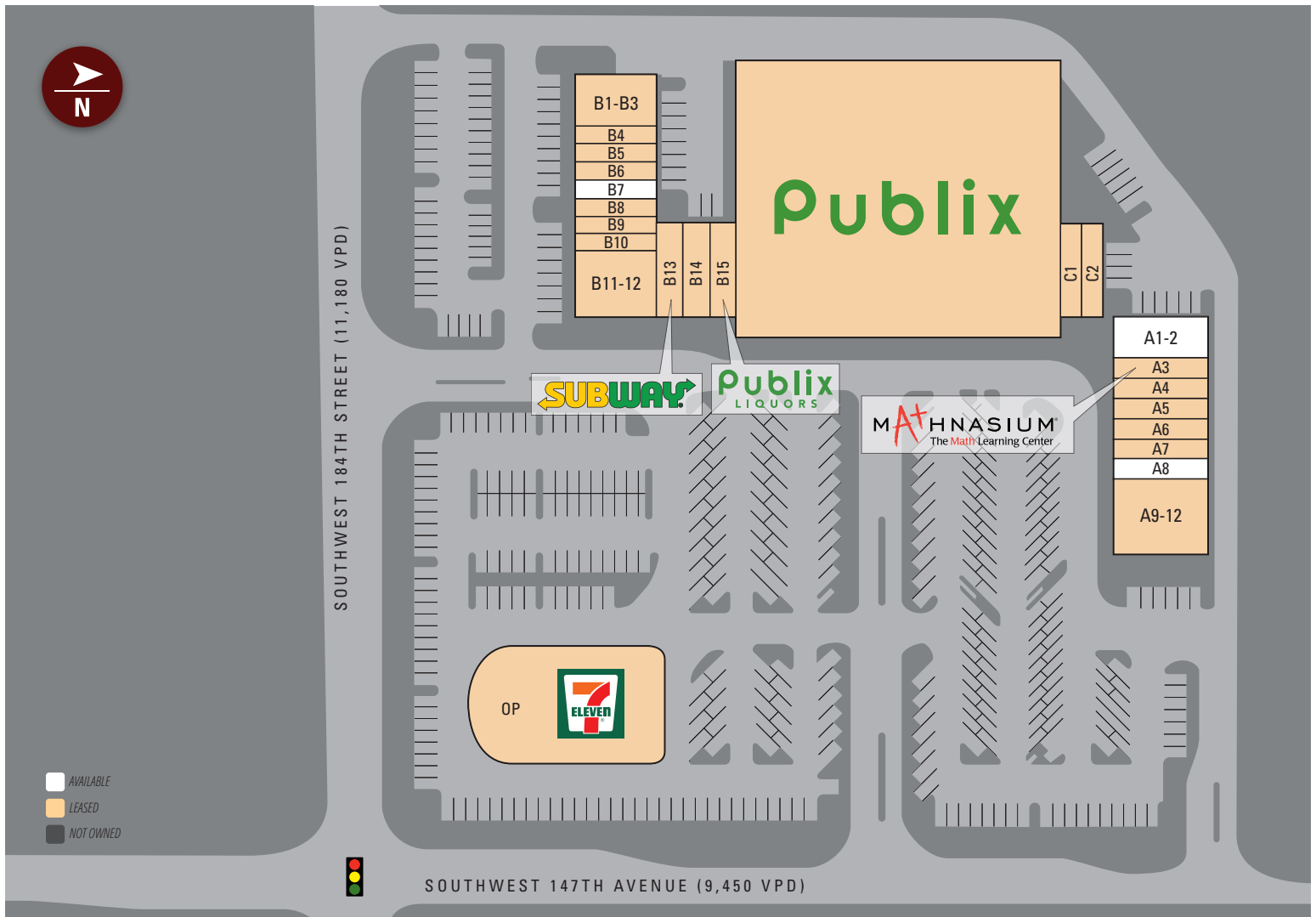
Licensed Real Estate Broker. No warranty expressed or implied has been made to the accuracy of the information provided herein, no liability assumed for error or omission.



www.crossmanco.com

Publix #1273 - Eureka Promenade

18280 SW 147th Avenue
Miami, FL 33187
Lat 25.601, Long -80.429



Suite	Tenant	Size	Suite	Tenant	Size	Suite	Tenant	Size
ANC	Publix	45,600	B1-3	Little Superheroes Daycare	2,733	B13	Subway	1,413
A1-2	AVAILABLE	2,100	B4	Super Cleaners	920	B14	El Platoneeka Nicaraguan Cafe	1,400
A3	Mathnasium	1,073	B5	Dr. Somoza, DDS	920	B15	Publix Liquors	1,470
A4	Lezcano Insurance	1,073	B6	Pete's Kitchen	920	C1	The Mailbox Store	1,061
A5	Cold Stone Creamery	1,073	B7	AVAILABLE	920	C2	Temptation Pools	1,047
A6	Hair Doctor	1,073	B8	Kuts-4-Kids	823	OP1	7-Eleven	.95 Acres
A7	Lee Spa	1,073	B9	Fade County	823	TOTAL 75,533		
A8	AVAILABLE (December 2020)	1,073	B10	Smoothie Monkey	823			
A9-12	Pomodoro Italian Restaurant	4,328	B11-12	Casa Carlos	1,768			

Fernando Espino

Office: 305.342.4629 | Cell: 305.632.1809 | fespino@crossmanco.com
2655 South Le Jeune Road, Suite 908, Miami, FL

Licensed Real Estate Broker. No warranty expressed or implied has been made to the accuracy of the information provided herein, no liability assumed for error or omission.



www.crossmanco.com

Publix #1273 - Eureka Promenade

18280 SW 147th Avenue
Miami, FL 33187
Lat 25.601, Long -80.429

FOOT TRAFFIC OVERVIEW

EST. # OF CUSTOMERS ANNUALLY



EST. # OF VISITS ANNUALLY



AVG. VISITS / CUSTOMER



AVG. LENGTH-OF-STAY / VISIT



TOP 3 DAYS



Saturday	197,193
Sunday	184,827
Friday	166,791

OF VISITS

TOP 3 HOURS

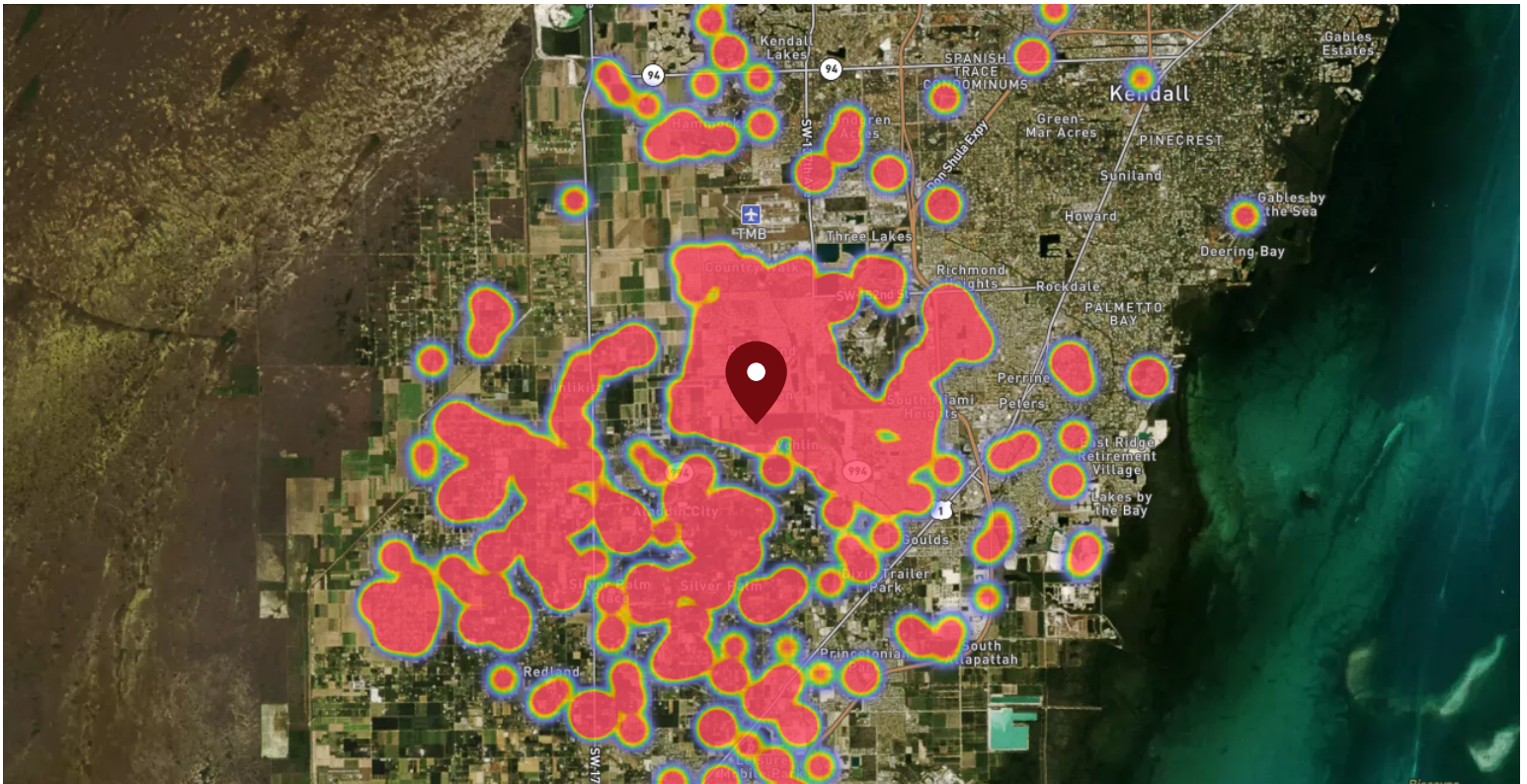


5-6 PM	221,725
6-7 PM	211,750
4-5 PM	197,527

OF VISITS

Data provided by Placer Labs Inc. (www.placer.ai) Oct 1, 2019 - Sept 30, 2020

SITE VISIT DENSITY



Red, orange, and yellow colors represent the location of 60% of site visitors

Data provided by Placer Labs Inc. (www.placer.ai)

Fernando Espino

Office: 305.342.4629 | Cell: 305.632.1809 | fespino@crossmanco.com
2655 South Le Jeune Road, Suite 908, Miami, FL

Licensed Real Estate Broker. No warranty expressed or implied has been made to the accuracy of the information provided herein, no liability assumed for error or omission.



www.crossmanco.com