

Restaurant Space For Lease

## // VILLAGE AT RIVERSTONE

N 2416 Old Mill Loop, Coeur d'Alene, ID 83814



// PRESENTED BY:

**BOB SPOONER**

COMMERCIAL & LEASING MANAGER

509.999.1959

BSPOONER@G-B.COM



## // PROPERTY SUMMARY



### PROPERTY HIGHLIGHTS

- 5,604 SQFT
- 3- Hoods 12', 10' and 36" DW hood
- Dish pit
- Walk-In cooler and freezer
- Storage loft (not included in SQFT)
- Bar area
- Dining area
- Banquet / large group area
- Available immediately
- \$22-\$26 PSF NNN
- NNN EST \$7.53 PSF
- Other tenants include Starbucks, Regal Cinemas, Azteca, Sushi I, San Francisco Sourdough, Cold Stone Creamery, Buckle, Zumiez, Orvis NW Outfitters, and others

### PROPERTY DESCRIPTION

The Subject is located at the signalized intersection of Northwest Boulevard and Riverstone Drive located in the heart of the Riverstone master planned development which is a 160 acre community which includes retail spaces, office buildings, a 10 acre park, 25 miles of trails, 2 hotels, 132 residential condos, and 202 residential apartments.

DEMOGRAPHICS	1 MILE	3 MILES	5 MILES
Total Households	2,082	16,534	28,875
Total Population	4,496	36,661	64,996
Average HH Income	\$39,023	\$48,967	\$52,966

// PRESENTED BY:

**BOB SPOONER**  
COMMERCIAL & LEASING MANAGER  
509.999.1959  
BSPOONER@G-B.COM



## // ADDITIONAL PHOTOS

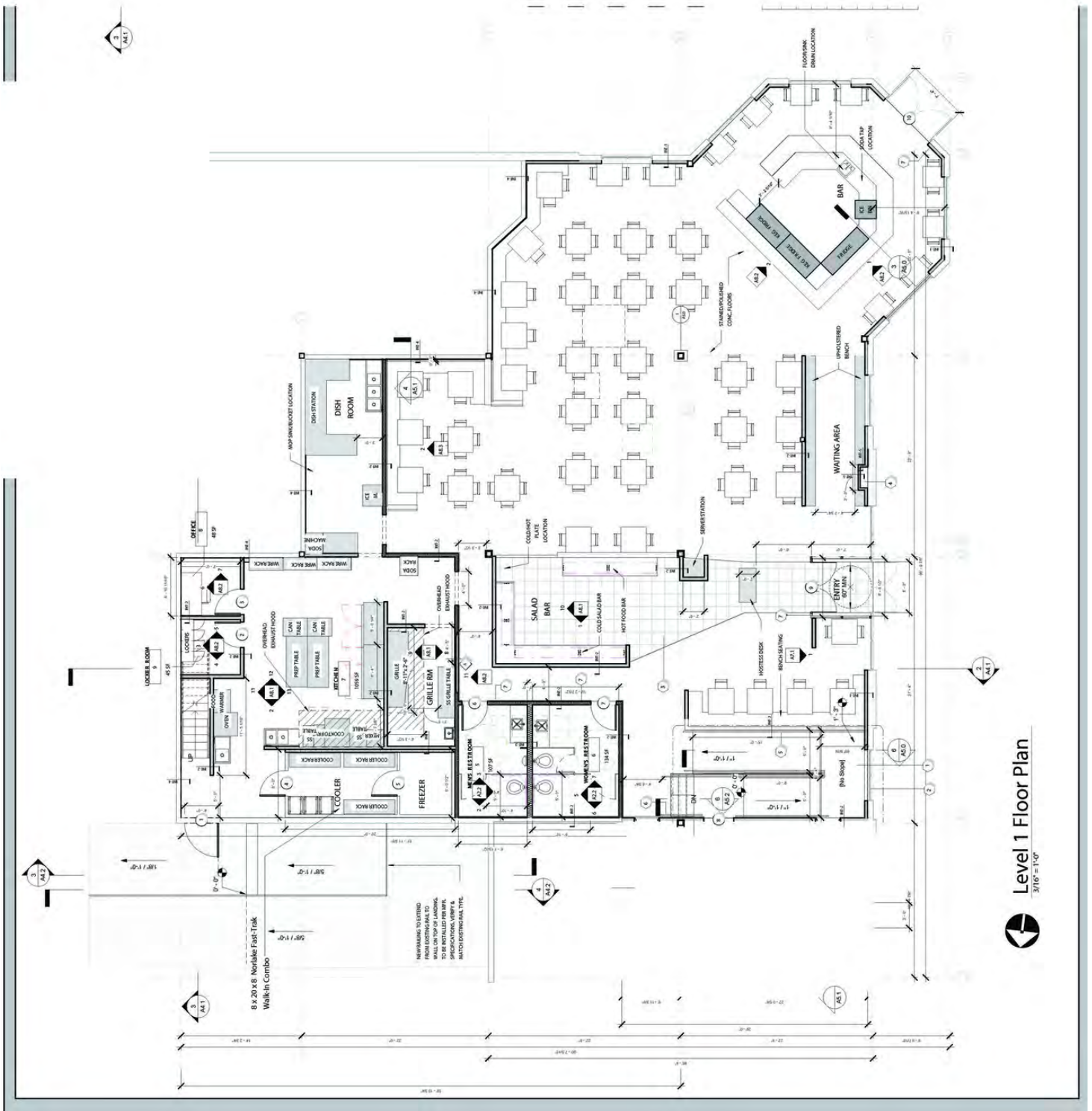


// PRESENTED BY:

**BOB SPOONER**  
COMMERCIAL & LEASING MANAGER  
509.999.1959  
BSPOONER@G-B.COM



# // FLOOR PLAN

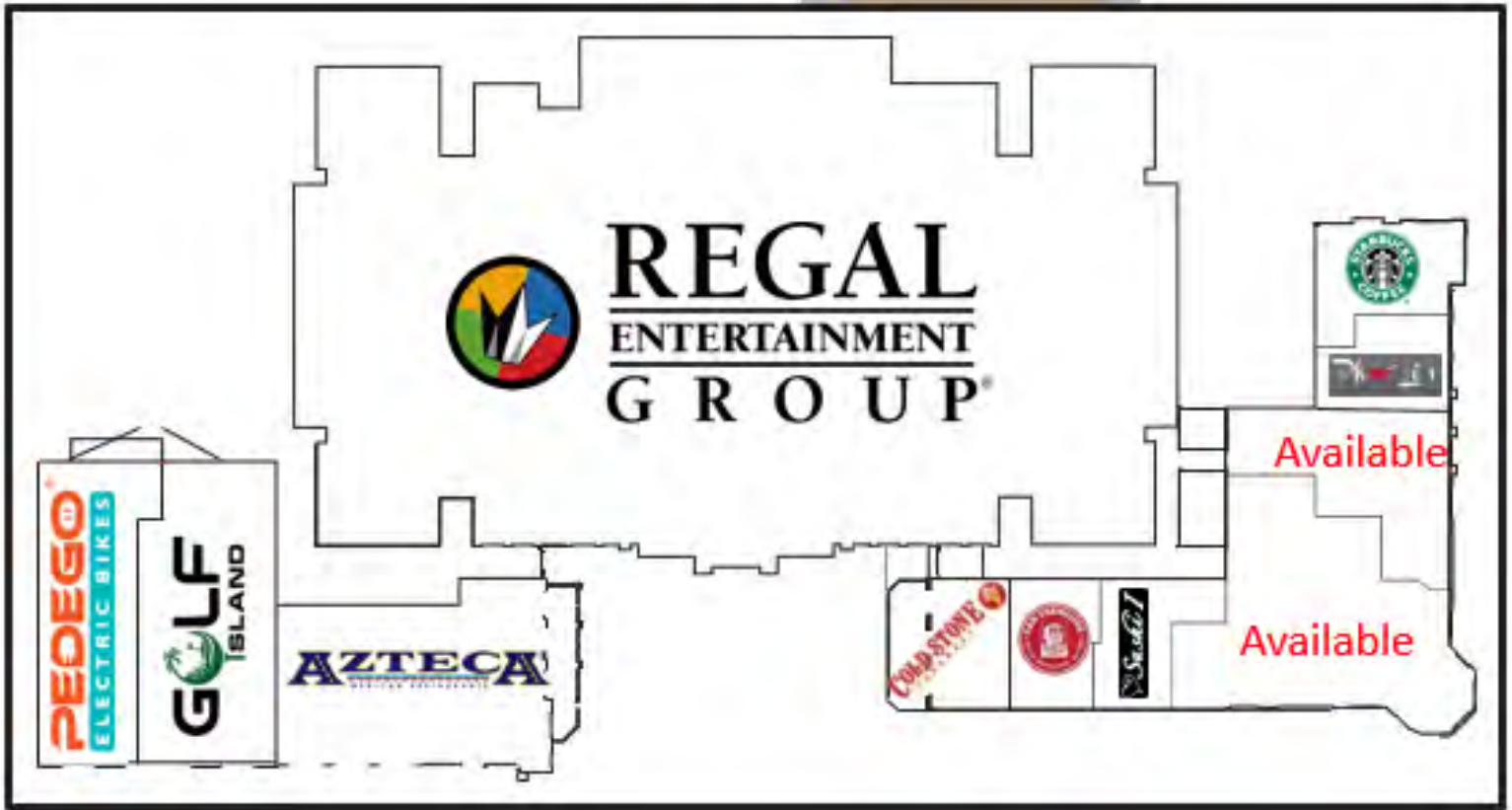


// PRESENTED BY:

**BOB SPOONER**  
COMMERCIAL & LEASING MANAGER  
509.999.1959  
BSPOONER@G-B.COM



# // SITE MAP



// PRESENTED BY:

**BOB SPOONER**  
COMMERCIAL & LEASING MANAGER  
509.999.1959  
BSPOONER@G-B.COM



# // RIVERSTONE RETAIL MAP



Google

Imagery ©2023 Airbus, Maxar Technologies, U.S. Geological Survey, USDA/FPAC/GEO

// PRESENTED BY:

**BOB SPOONER**  
COMMERCIAL & LEASING MANAGER  
509.999.1959  
BSPOONER@G-B.COM

