



INDUSTRIAL LAND AVAILABLE

12500 Old O'Connor Road, San Antonio, TX 78233

LAND AVAILABLE FOR SALE



OFFERING SUMMARY

Sale Price:	Call for Pricing
Lot Size:	6.66 Acres
Zoning:	I1
Market:	Northeast
Traffic Count 1:	1,500
Street Name 1:	Old O'Connor Road
Traffic Count 2:	3,000
Street Name 2:	Lookout Road

PROPERTY OVERVIEW

Two Parcels of Land Zoned I1 in Northeast San Antonio

PROPERTY HIGHLIGHTS

- Parcel 1: 3.33 Acres
- Parcel 2: 3.33 Acres
- Utilities should be confirmed by 3rd Party Engineer
- Broker is Principal

DEMOGRAPHICS

	1 MILE	3 MILES	5 MILES
Total Households	4,184	35,442	85,715
Total Population	11,947	95,848	231,497
Average HH Income	\$57,717	\$64,218	\$64,162

BEVERLY BARSHOP

Broker
210.826.0036 x29
beverly@rfmcommercial.com

This information was obtained from sources deemed reliable; RFM Commercial, Inc. has not verified makes no representations or warranties, expressed or implied, as to the completeness or accuracy thereof. The presentation of this real estate information is subject to error, omission, change to price, prior sale or lease, or withdrawal without notice. You and your advisors should conduct a careful independent investigation of the property to determine if it is suitable for your intended purpose.

LAND AVAILABLE FOR SALE



BEVERLY BARSHOP

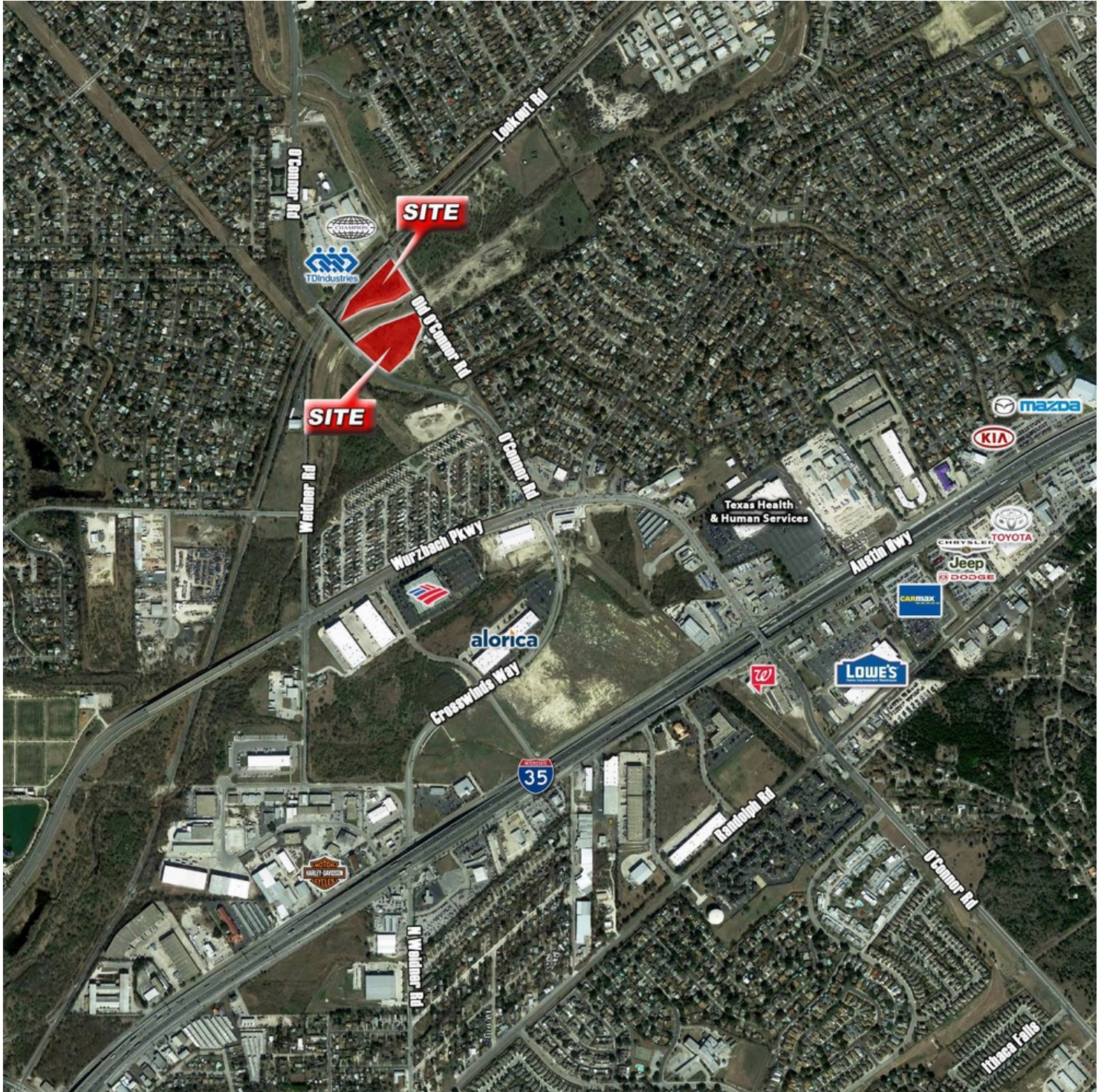
Broker

210.826.0036 x29

beverly@rfmcommercial.com

This information was obtained from sources deemed reliable; RFM Commercial, Inc. has not verified makes no representations or warranties, expressed or implied, as to the completeness or accuracy thereof. The presentation of this real estate information is subject to error, omission, change to price, prior sale or lease, or withdrawal without notice. You and your advisors should conduct a careful independent investigation of the property to determine if it is suitable for your intended purpose.

LAND AVAILABLE FOR SALE



BEVERLY BARSHOP

Broker

210.826.0036 x29

beverly@rfmcommercial.com

This information was obtained from sources deemed reliable; RFM Commercial, Inc. has not verified makes no representations or warranties, expressed or implied, as to the completeness or accuracy thereof. The presentation of this real estate information is subject to error, omission, change to price, prior sale or lease, or withdrawal without notice. You and your advisors should conduct a careful independent investigation of the property to determine if it is suitable for your intended purpose.



INDUSTRIAL LAND AVAILABLE

12500 Old O'Connor Road, San Antonio, TX 78233

LAND AVAILABLE FOR SALE



BEVERLY BARSHOP

Broker

210.826.0036 x29

beverly@rfmcommercial.com

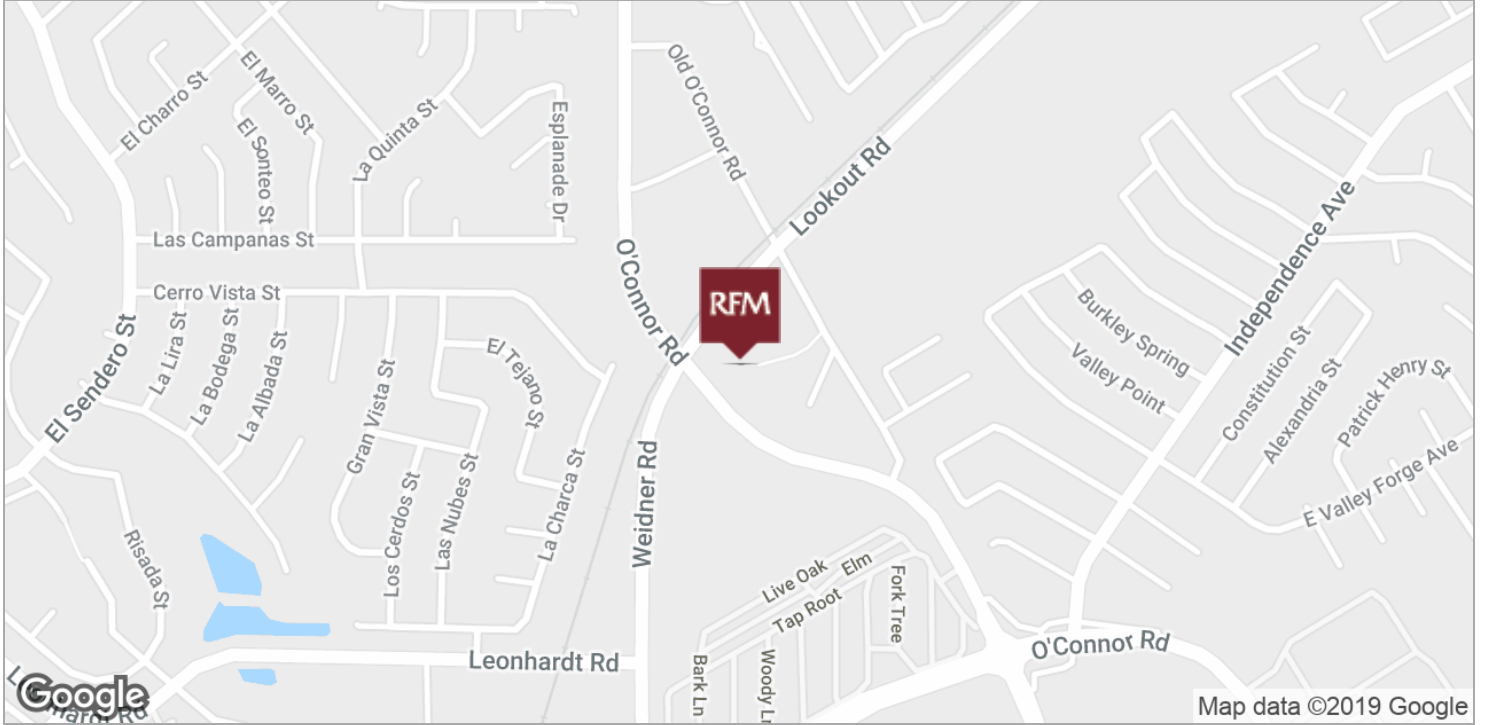
This information was obtained from sources deemed reliable; RFM Commercial, Inc. has not verified makes no representations or warranties, expressed or implied, as to the completeness or accuracy thereof. The presentation of this real estate information is subject to error, omission, change to price, prior sale or lease, or withdrawal without notice. You and your advisors should conduct a careful independent investigation of the property to determine if it is suitable for your intended purpose.



INDUSTRIAL LAND AVAILABLE

12500 Old O'Connor Road, San Antonio, TX 78233

LAND AVAILABLE FOR SALE



BEVERLY BARSHOP

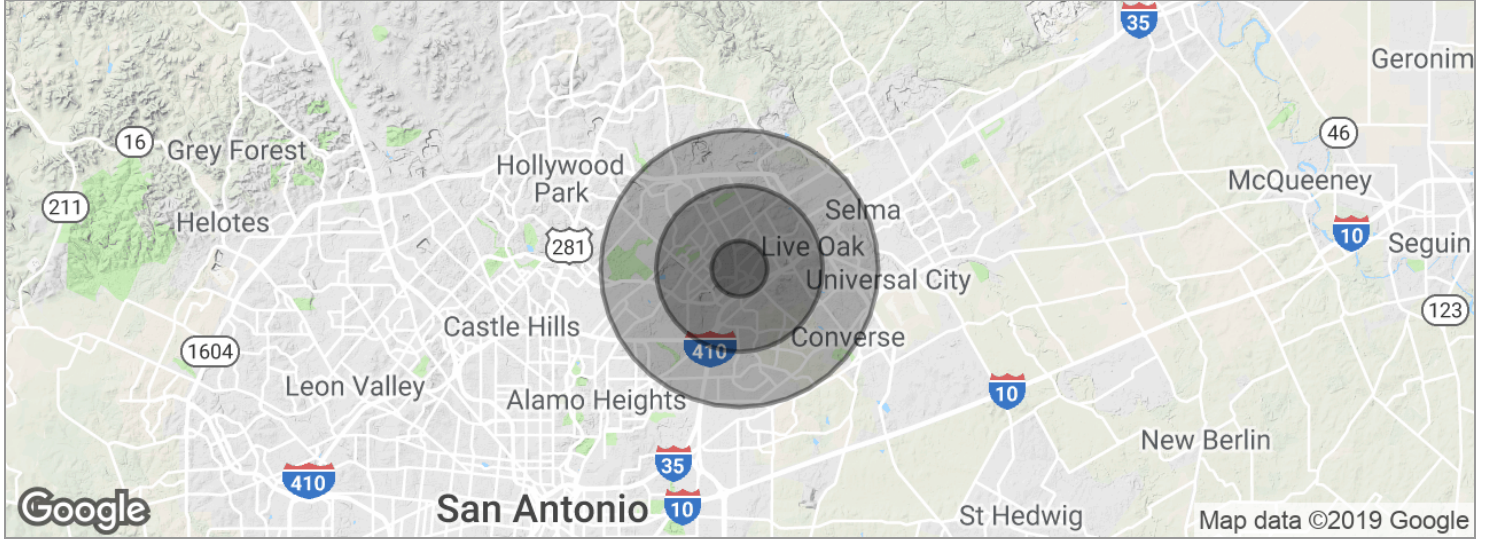
Broker

210.826.0036 x29

beverly@rfmcommercial.com

This information was obtained from sources deemed reliable; RFM Commercial, Inc. has not verified makes no representations or warranties, expressed or implied, as to the completeness or accuracy thereof. The presentation of this real estate information is subject to error, omission, change to price, prior sale or lease, or withdrawal without notice. You and your advisors should conduct a careful independent investigation of the property to determine if it is suitable for your intended purpose.

LAND AVAILABLE FOR SALE



Total population	11,947	95,848	231,497
Median age	33.9	35.0	34.2
Median age (Male)	31.2	32.9	32.4
Median age (Female)	36.8	37.2	36.0
<hr/>			
Total households	4,184	35,442	85,715
# of persons per HH	2.9	2.7	2.7
Average HH income	\$57,717	\$64,218	\$64,162
Average house value	\$104,821	\$123,620	\$132,421

* Demographic data derived from 2010 US Census

BEVERLY BARSHOP

Broker
210.826.0036 x29
beverly@rfmcommercial.com

This information was obtained from sources deemed reliable; RFM Commercial, Inc. has not verified makes no representations or warranties, expressed or implied, as to the completeness or accuracy thereof. The presentation of this real estate information is subject to error, omission, change to price, prior sale or lease, or withdrawal without notice. You and your advisors should conduct a careful independent investigation of the property to determine if it is suitable for your intended purpose.

