

AVAILABLE FOR LEASE

# 4300 Munson Street NW

Canton, Ohio 44718



## Property Highlights

- 4,355 SF of space on the 3rd floor available - last suite remaining
- Currently built out as classroom space, Landlord prepared to provide significant TI for credit-worthy tenant
- Over 500 parking spaces (10+ per 1,000 SF)
- Adjacent to all the amenities of Belden Village
- Rate includes base-year for operating expenses and utilities
- Tenant responsible for in-suite cleaning
- For Lease at \$17.75/SF MG

### CONTACT INFORMATION:

**ERIC M. SCHREIBMAN**

Vice President

216.525.1471

[eschreibman@crescorealestate.com](mailto:eschreibman@crescorealestate.com)

**RICO A. PIETRO, SIOR**

Principal

216.525.1473

[rpietro@crescorealestate.com](mailto:rpietro@crescorealestate.com)

3 SUMMIT PARK DRIVE, SUITE 200, CLEVELAND, OHIO 44131 - [CRESOREALESTATE.COM](http://CRESOREALESTATE.COM)

*Independently Owned and Operated / A Member of the Cushman & Wakefield Alliance*

Cushman & Wakefield Copyright 2015. No warranty or representation, express or implied, is made to the accuracy or completeness of the information contained herein, and same is submitted subject to errors, omissions, change of price, rental or other conditions, withdrawal without notice, and to any special listing conditions imposed by the property owner(s). As applicable, we make no representation as to the condition of the property (or properties) in question.

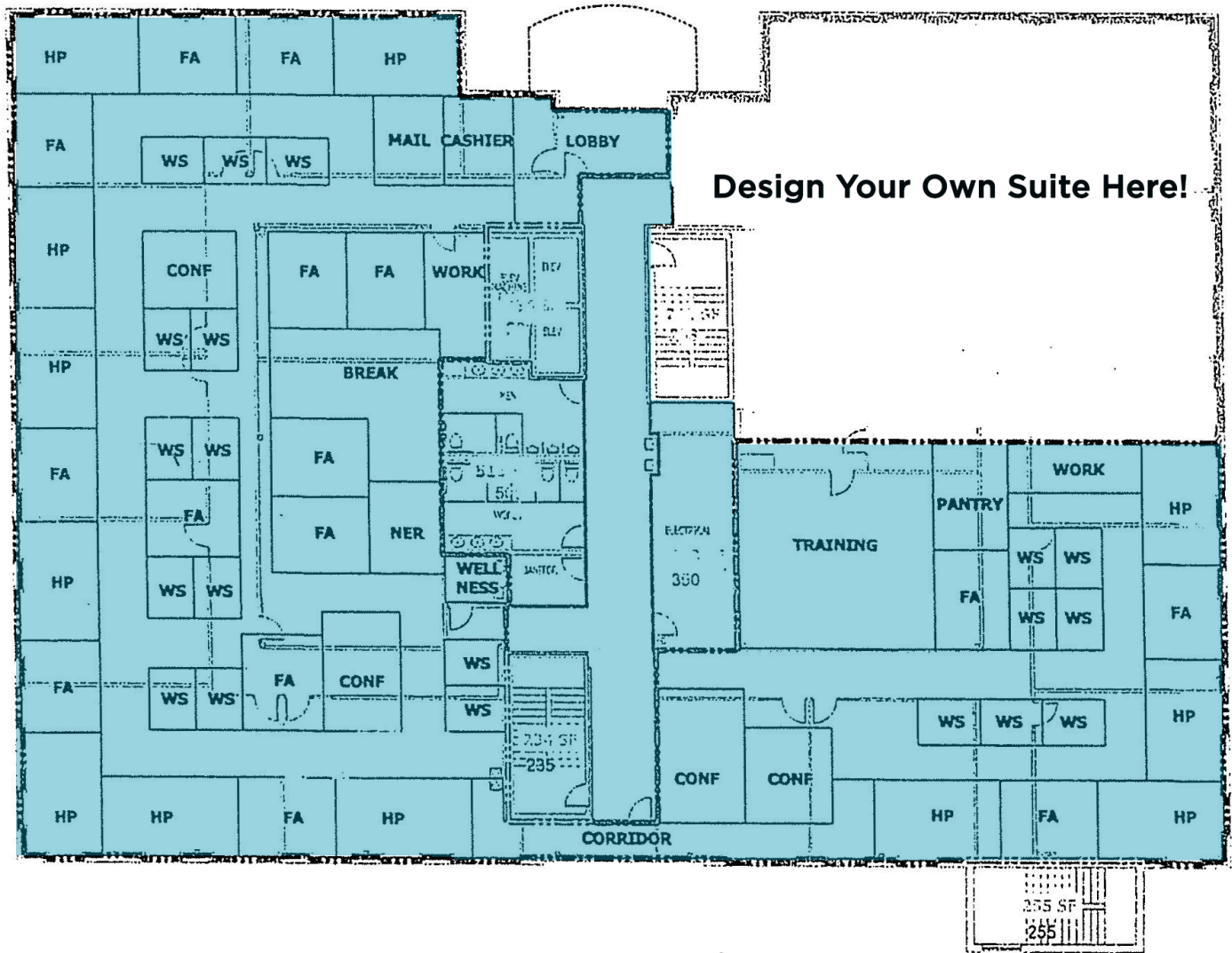


AVAILABLE FOR LEASE

# 4300 Munson Street NW

Canton, Ohio 44718

4,355 SF AVAILABLE - 2ND FLOOR



**CONTACT INFORMATION:**

**ERIC M. SCHREIBMAN**

Vice President

216.525.1471

eschreibman@crescorealestate.com

**RICO A. PIETRO, SIOR**

Principal

216.525.1473

rpietro@crescorealestate.com

3 SUMMIT PARK DRIVE, SUITE 200, CLEVELAND, OHIO 44131 - CRESCOREALESTATE.COM

*Independently Owned and Operated / A Member of the Cushman & Wakefield Alliance*

Cushman & Wakefield Copyright 2015. No warranty or representation, express or implied, is made to the accuracy or completeness of the information contained herein, and same is submitted subject to errors, omissions, change of price, rental or other conditions, withdrawal without notice, and to any special listing conditions imposed by the property owner(s). As applicable, we make no representation as to the condition of the property (or properties) in question.



AVAILABLE FOR LEASE

# 4300 Munson Street NW

Canton, Ohio 44718

## AREA AMENITIES



### CONTACT INFORMATION:

**ERIC M. SCHREIBMAN**

Vice President

216.525.1471

eschreibman@crescorealestate.com

**RICO A. PIETRO, SIOR**

Principal

216.525.1473

rpietro@crescorealestate.com

3 SUMMIT PARK DRIVE, SUITE 200, CLEVELAND, OHIO 44131 - CRESCOREALESTATE.COM

Independently Owned and Operated / A Member of the Cushman & Wakefield Alliance

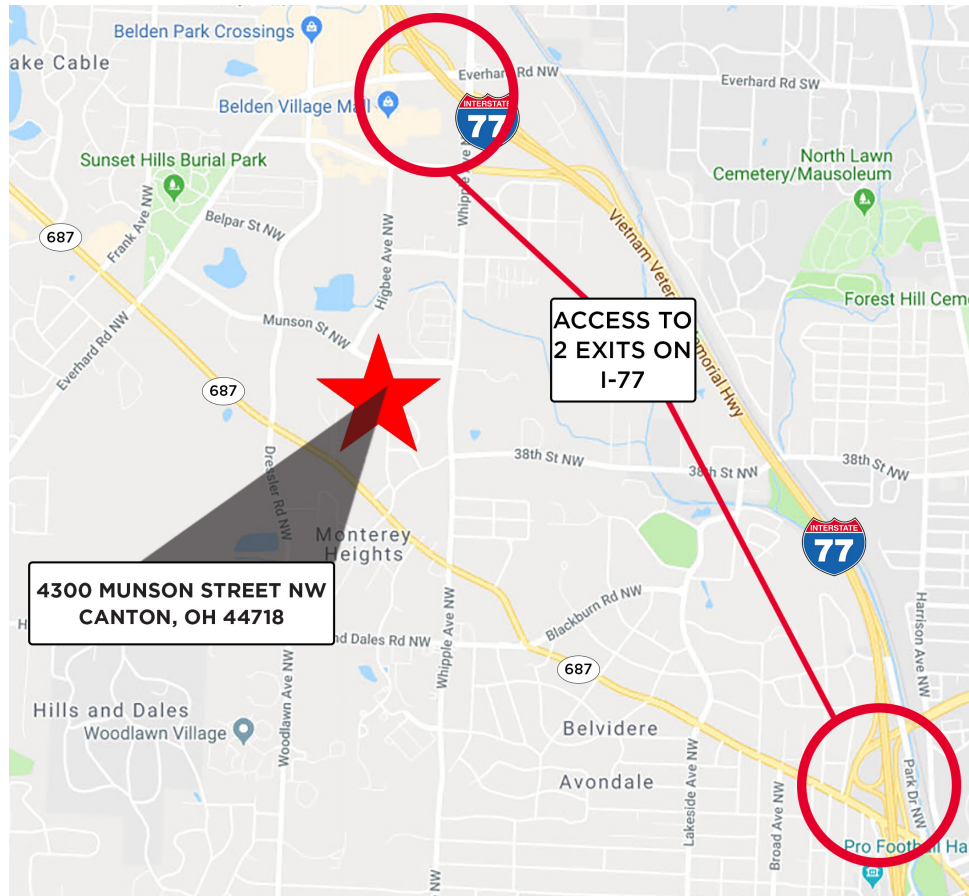
Cushman & Wakefield Copyright 2015. No warranty or representation, express or implied, is made to the accuracy or completeness of the information contained herein, and same is submitted subject to errors, omissions, change of price, rental or other conditions, withdrawal without notice, and to any special listing conditions imposed by the property owner(s). As applicable, we make no representation as to the condition of the property (or properties) in question.



AVAILABLE FOR LEASE

# 4300 Munson Street NW

Canton, Ohio 44718



## CONTACT INFORMATION:

**ERIC M. SCHREIBMAN**

Vice President

216.525.1471

eschreibman@crescorealestate.com

**RICO A. PIETRO, SIOR**

Principal

216.525.1473

rpietro@crescorealestate.com

3 SUMMIT PARK DRIVE, SUITE 200, CLEVELAND, OHIO 44131 - CRESCOREALESTATE.COM

*Independently Owned and Operated / A Member of the Cushman & Wakefield Alliance*

Cushman & Wakefield Copyright 2015. No warranty or representation, express or implied, is made to the accuracy or completeness of the information contained herein, and same is submitted subject to errors, omissions, change of price, rental or other conditions, withdrawal without notice, and to any special listing conditions imposed by the property owner(s). As applicable, we make no representation as to the condition of the property (or properties) in question.

