

FOR LEASE

1407 W. Wade Hampton Blvd. Greer, SC 29650

\$18.00 SF/YR (NNN)



End Cap Retail Space in Dobson Village

- Excellent space available in the heart of the Greer retail corridor
- One (1) ±1,899 SF space available (Unit E)
- Tenants include: Dobson Gifts and General Hardware, Joy of Tokyo, and H&R Block
- Out Parcel to Home Depot
- Traffic Count: ± 31,000 VPD
- Neighboring businesses include Bi-Lo, Lowe's, Kohl's, Target, Hobby Lobby

OFFERING SUMMARY

LEASE RATE	\$18.00/SF
NNN CHARGES (EST.)	\$3.00/SF
LOT SIZE	±1.61 Acres
SUITE SIZE	±1,899 SF

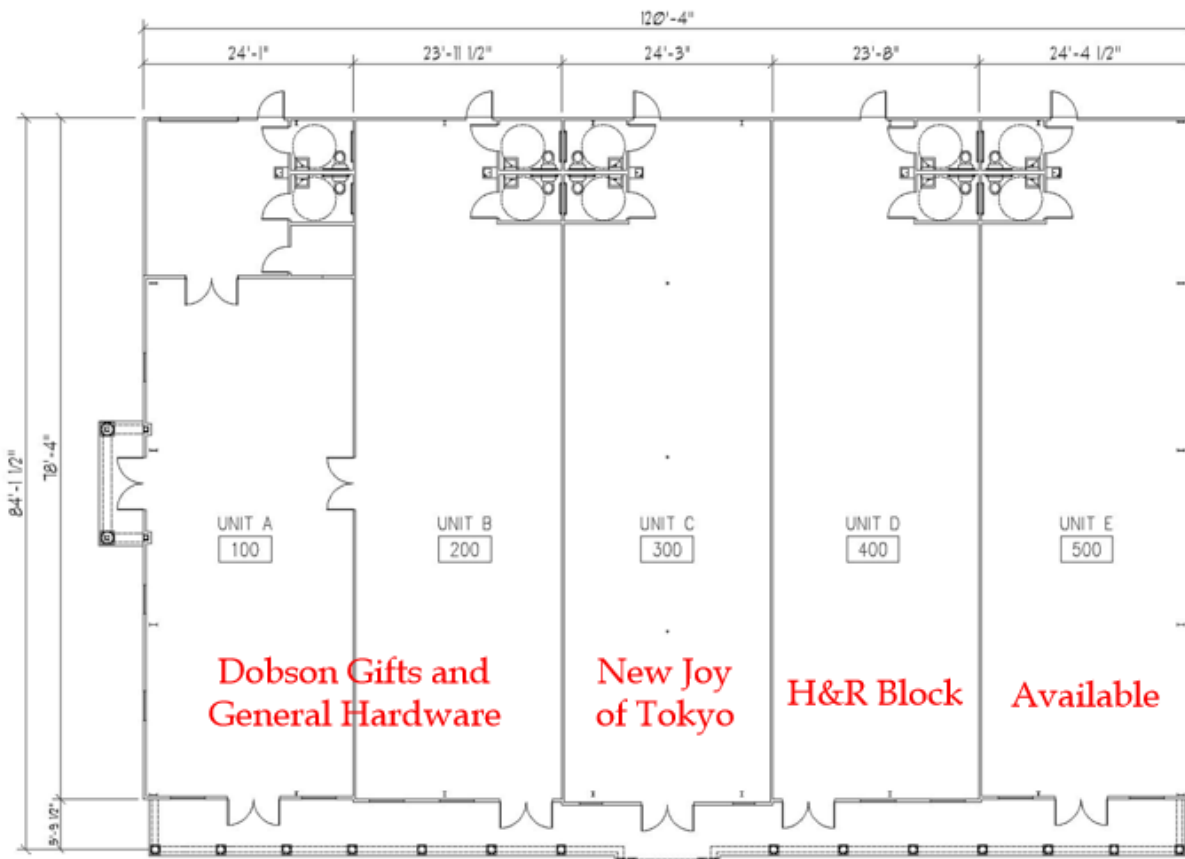
Demographics	1 Mile	3 Miles	5 Miles
Total Population:	3,058	33,190	95,785
Average HH Income:	\$64,228	\$62,201	\$64,885

FOR LEASE

1407 W. Wade Hampton Blvd. Greer, SC 29650



Map data ©2021 Imagery ©2021, Maxar Technologies, U.S. Geological Survey, USDA Farm Service Agency



LANGLEY & ASSOCIATES
 DESIGN • INTERIORS • PLANNING
 100 FERRIS STREET • GREENSBORO, NORTH CAROLINA 27409 • 336.841.8811 • FAX 336.841.8800

FLOOR PLAN
 DOBSON'S HARDWARE
 FACADE RENOVATION
 WADE HAMPTON BLVD., GREER, SC

✉ **Jimmy Wright**
 O: +1 864 232 9040
 jwright@furmancap.com

✉ **Geoff Beans**
 O: +1 419 913 6903
 gbeans@naiearlefurman.com

No Warranty Or Representation, Express Or Implied, Is Made As To The Accuracy Of The Information Contained Herein, And The Same Is Submitted Subject To Errors, Omissions, Change Of Price, Rental Or Other Conditions, Prior Sale, Lease Or Financing, Or Withdrawal Without Notice, And Of Any Special Listing Conditions Imposed By Our Principals. No Warranties Or Representations Are Made As To The Condition Of The Property Or Any Hazards Contained Therein As Any To Be Implied.

NAI Earle Furman