

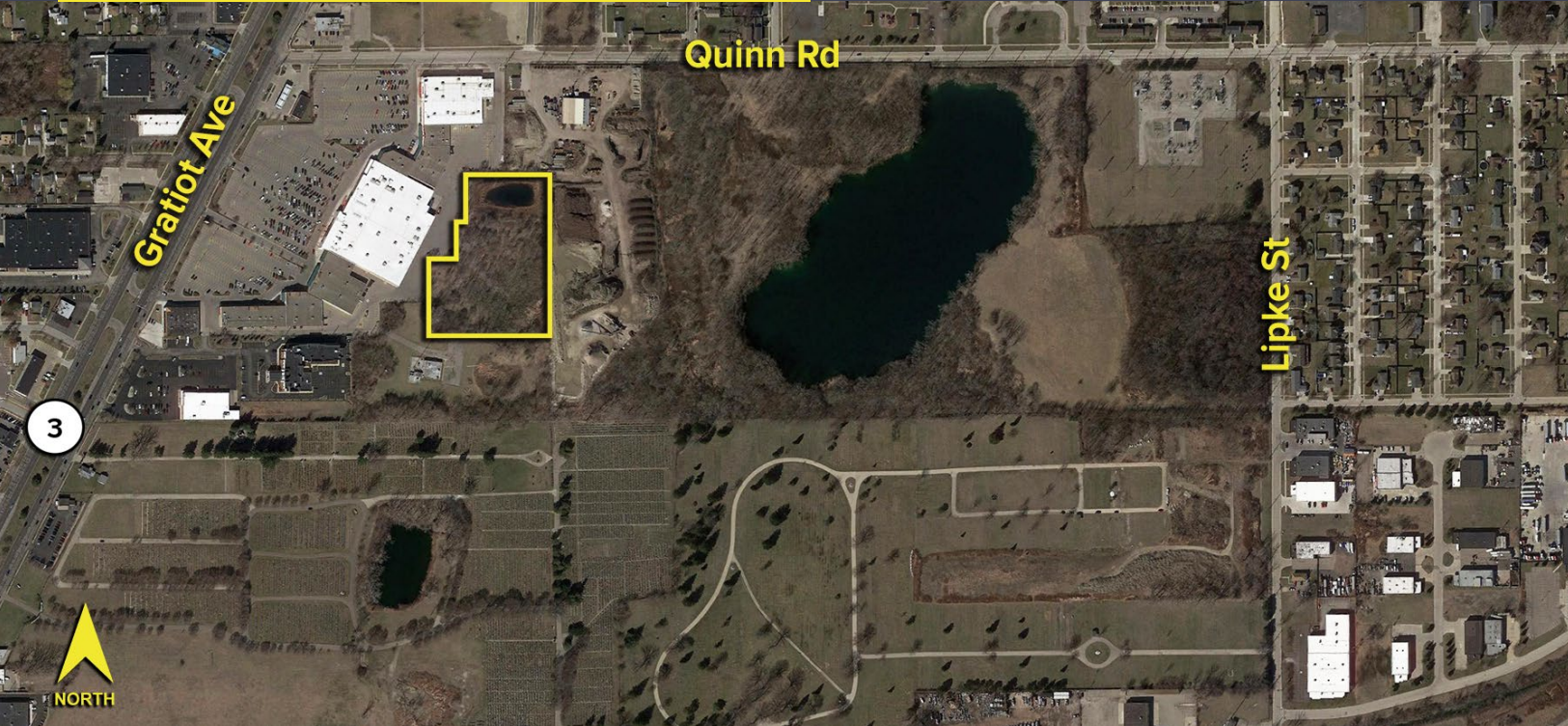
GRATIOT AVENUE CLINTON TWP, MICHIGAN

LAND FOR SALE
5.40 Acres Available



**SIGNATURE
ASSOCIATES**
KNOW SIGNATURE | KNOW RESULTS

PRICE REDUCED



PROPERTY FEATURES

- 5.40 Acres available
- Zoned I-1
- Rare industrial zoned land in Clinton Twp, just off Gratiot Ave
- Utilities include water, sewer, and gas
- Asking Price: \$400,000.00 (\$74,128.98/acre)
- Contact broker for more details



For more information, please contact:

PETER VANDERKAAY
(248) 359 3837
pvanderkaay@signatureassociates.com

PAUL SAAD
(248) 359 0652
psaad@signatureassociates.com

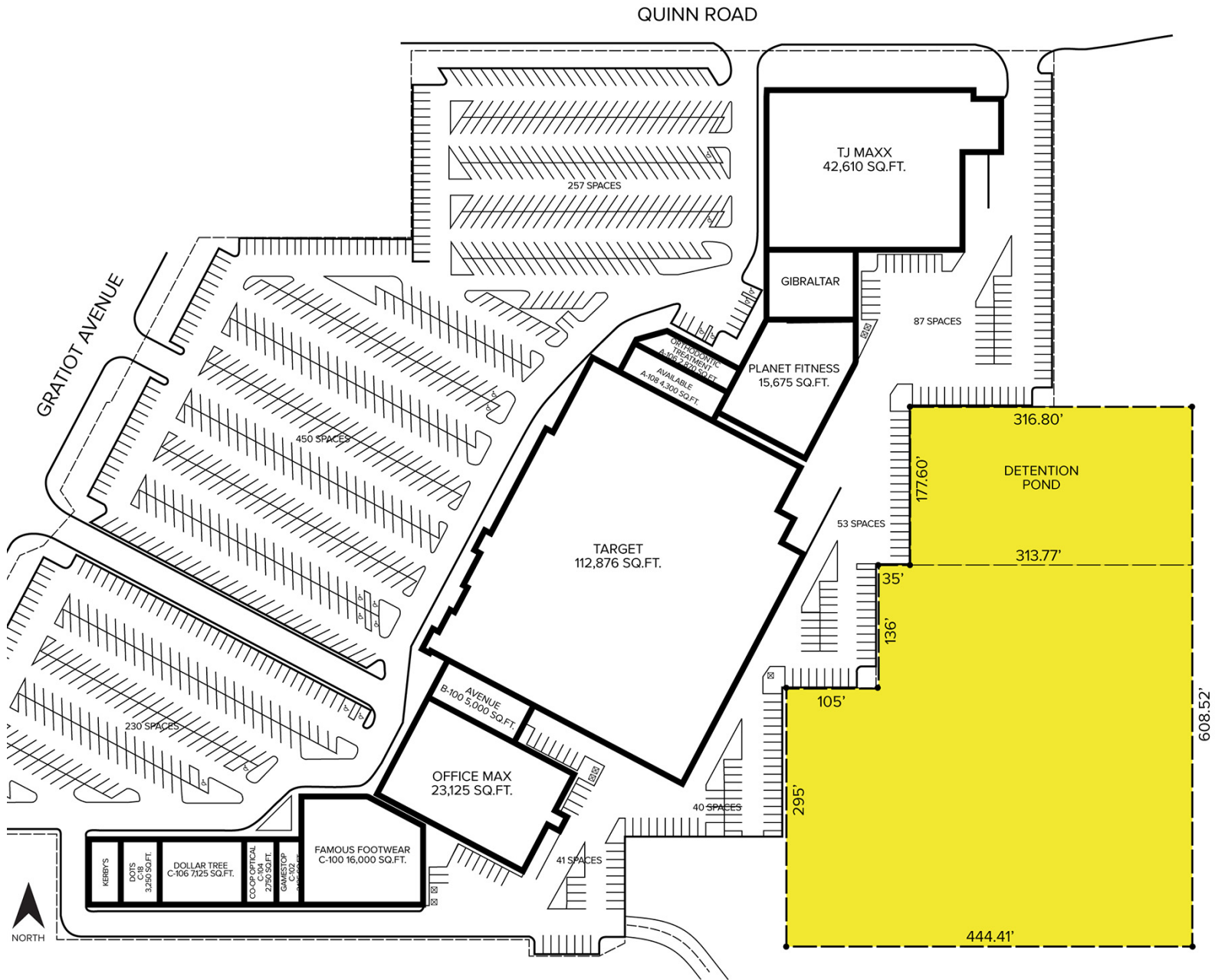
SIGNATURE ASSOCIATES
One Towne Square, Suite 1200
Southfield, MI 48076
www.signatureassociates.com

Gratiot Avenue – Clinton Twp, Michigan

Land For Sale

5.40
Acres
AVAILABLE

Site Plan



For more information, please contact:

PETER VANDERKAAY
(248) 359 3837
pvanderkaay@signatureassociates.com

PAUL SAAD
(248) 359 0652
psaad@signatureassociates.com

SIGNATURE ASSOCIATES
One Towne Square, Suite 1200
Southfield, MI 48076
www.signatureassociates.com